

LATERAL 3, MAIN 23, SOUTHWEST INTERCEPTOR EMERALD BAY 2ND ADDITION 468-84638 (744344)

GENERAL NOTES

- Contractor will be required to provide a minimum advance notice of seventy-two hours (72) to utility companies prior to starting any excavation as follows:
 Kansas One-Call 1-800-DIG SAFE
 The Contractor must notify the following in case of an emergency:
 Cox Communications 262-0661
 Kansas Gas Service 383-8600
 Westar 383-8600
 Aquila 1-800-303-0357
 SBC 1-800-286-8313
 City of Wichita Water Department 262-6000
 City of Wichita Sewer Maintenance 262-6000
- Underground utility service lines and overhead utility pole lines are to be adjusted as necessary by others prior to construction unless the plans specifically call for their adjustment by the Contractor or unless the plans specifically identify a utility to be adjusted by its owner during construction. Existing utilities and their location, as shown on the plans, represent the best information obtainable for design. Location information has been obtained from the various utility companies and is either from company record drawings or company-provided field locations. The Contractor will be required to work around existing utilities within the right-of-way which do not conflict with proposed construction.
- Rubble from the removal of miscellaneous structures and excess excavation which is to be wasted shall be disposed of on sites to be provided by the Contractor. These sites shall be approved by the Engineer as to suitability, appearance and site location. Locations that, in the opinion of the Engineer, will leave an unsightly appearance will not be approved.
- All disposal sites must be approved by the Kansas Department of Health and Environment. Material either stockpiled or disposed of in a flood plain would require a Kansas State Board of Agriculture permit. Any material dumped in waters of the United States or wetlands is subject to U.S. Corps permitting regulations. Any material buried or stockpiled beyond approved of Engineers construction limits would require additional archeological investigations unless buried in a previously approved borrow location.
- The Engineer shall take field ties to all quarter section corners. The Contractor shall set a City survey monument in the required location where such quarter section corners fall within the limits of pavement construction. Survey monuments will be furnished by the City. The Engineer will accurately located and install the iron at the quarter section corner. This work will not be paid for directly, but shall be considered subsidiary to the other pay items of work in the contract.
- The Contractor shall give all property owners and/or tenants of developed property directly abutting the construction of this project a minimum of ten (10) days advance notice prior to start of construction.
- All waste areas for excess cut must be approved by the engineer. All excess material is to remain on site.
- The Contractor shall seed, fertilize and mulch all disturbed areas upon completion of construction. Seeding shall be incidental to the bid item for "Project Seeding". Reserve 'B' and the Shoreline Street ROW shall be 'Permanent Seeding', all other areas may be 'Temporary Seeding'.
- The Contractor shall adjust Water Valve Boxes and Fire Hydrants as directed by the Engineer at the price bid for said adjustments. The Water Department shall field locate water valves one time during construction when requested by the Contractor. It shall be the Contractor's responsibility to preserve such field locations during the construction process. Water valves, water valve boxes or fire hydrants damaged during construction shall be repaired by the Contractor at his own expense.
- Underground utility service lines and overhead utility pole lines are to be adjusted as necessary by others prior to construction unless the plans specifically call for their adjustment by the Contractor or unless the plans specifically identify a utility to be adjusted by its owner during construction. Existing utilities and their location, as shown on the plans, represent the best information obtainable for design. Location information has been obtained from the various utility companies and is either from company record drawings or company-provided field locations. The Contractor will be required to work around existing utilities within the right-of-way which do not conflict with proposed construction.
- Trees and shrubs in public right-of-way which are in direct conflict with proposed new construction shall be removed by the Contractor with the Engineer's approval. Trees and shrubs which are not in direct conflict with proposed new construction shall be saved and protected from damage.

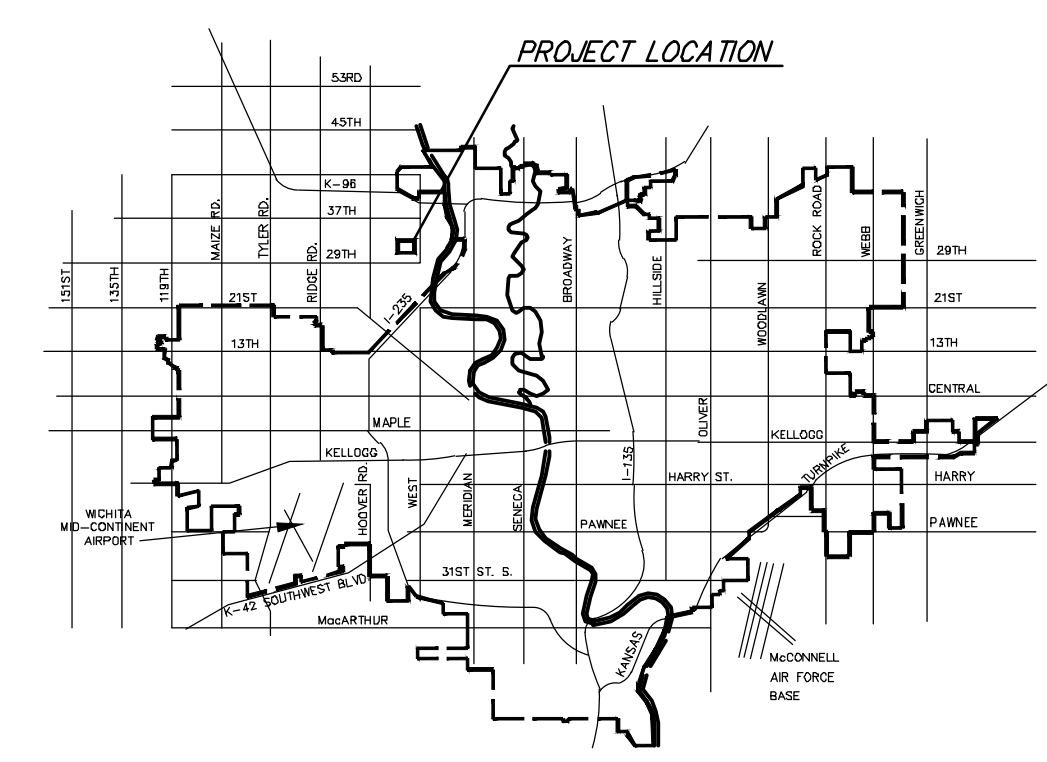
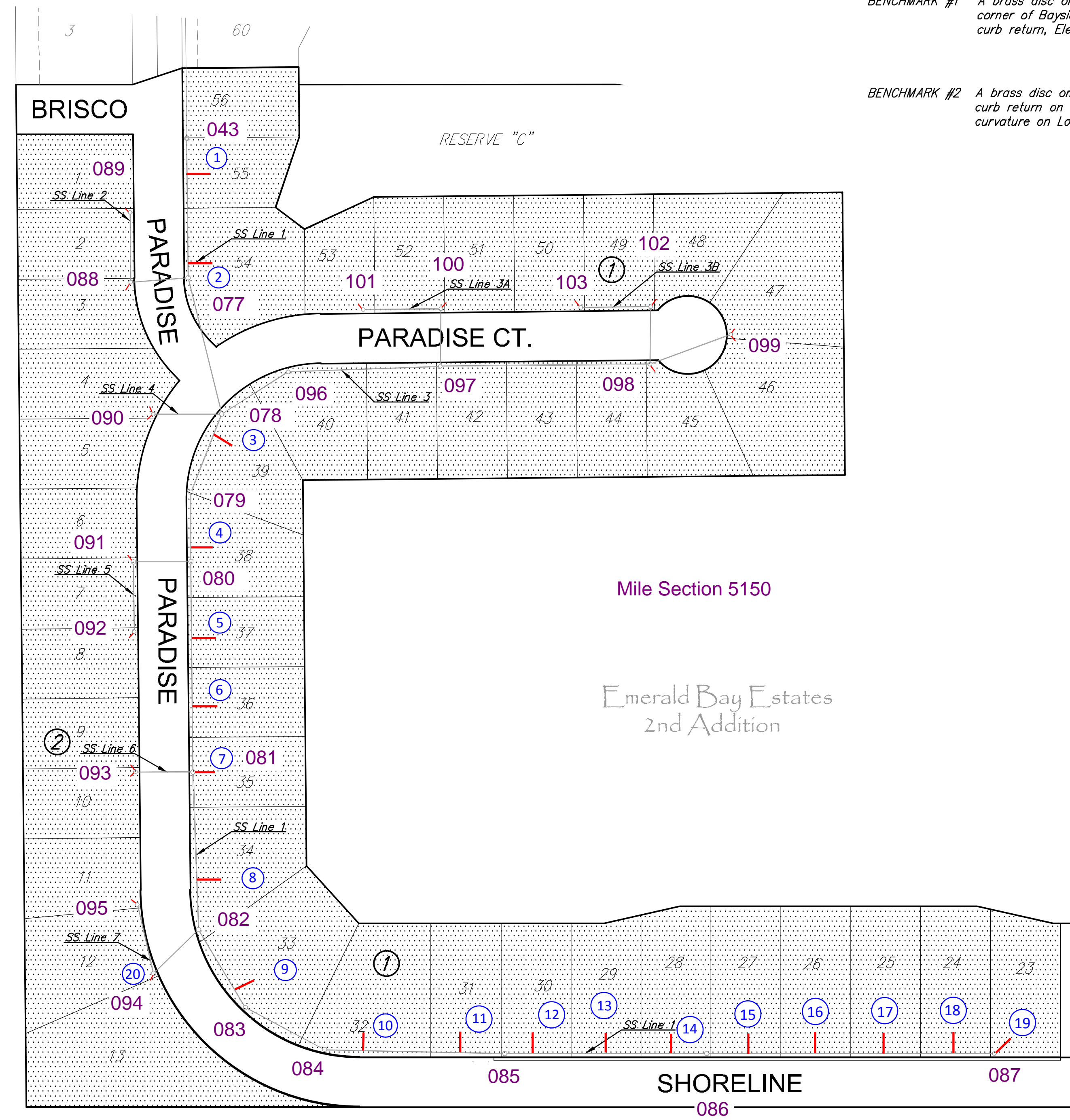
BENCH MARKS

- BENCHMARK #1** A brass disc on top of the curb, at the northwest corner of Bayside Ct. and Bayside, at the north curb return, Elevation = 1325.92 NAVD88.
- BENCHMARK #2** A brass disc on top of the curb, at the northwest curb return on Paradise Cir., West of the point of curvature on Lot 50, Block 1, Elevation = 1324.75 NAVD88.

SHEET INDEX

- TITLE
- LINE 1
- LINES 2 & 3
- LINES 3A & 3B
- LINES 4 & 5
- LINES 6 & 7
- MH DETAILS
- FRAME & COVER DETAILS
- RISER DETAILS
- EROSION CONTROL DETAILS

Mies Construction - Contractor
 K. Kyle - City of Wichita, Field Project Engineer
 J. Patton - City of Wichita, Inspector
 As-built
 Stubs & Risers
 Release Date: 8/5/2013
 Reviewed/pdf: APRosas 10/24/2013



VICINITY MAP

Unplatted

IMPROVEMENT DISTRICT

CITY OF WICHITA, KANSAS
 GARY JANZEN, P.E. - CITY ENGINEER

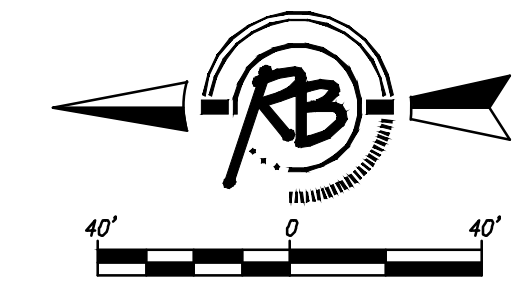


Ruggles & Bohm, P.A.
 Engineering, Surveying, Land Planning

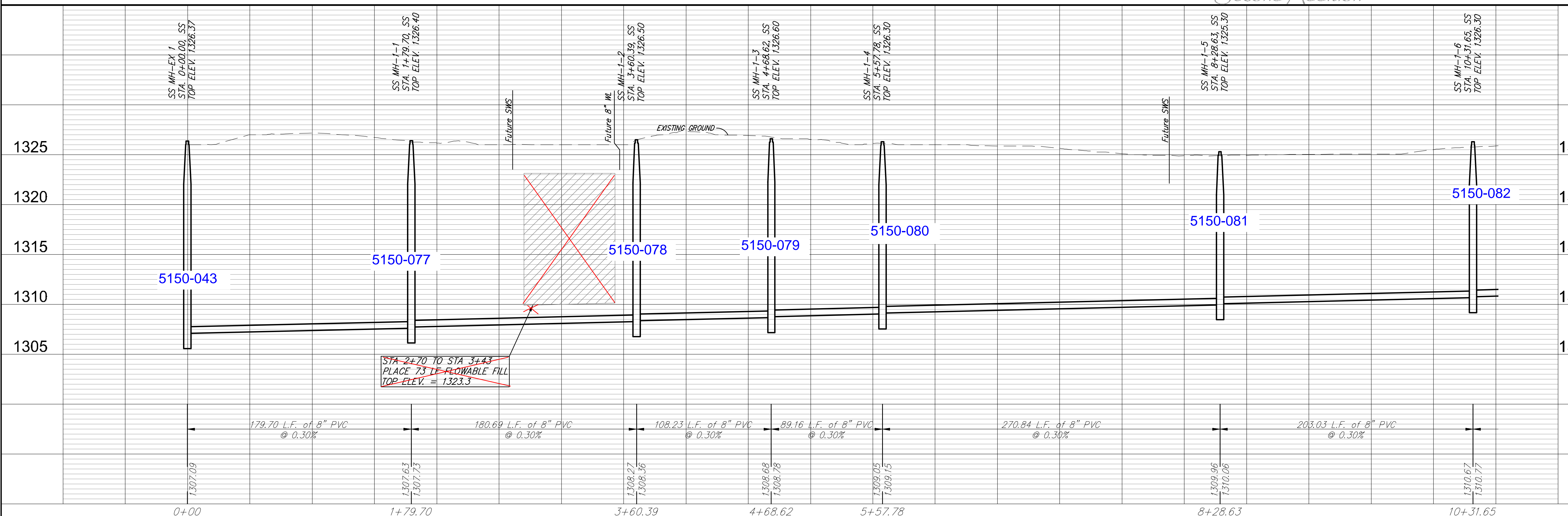
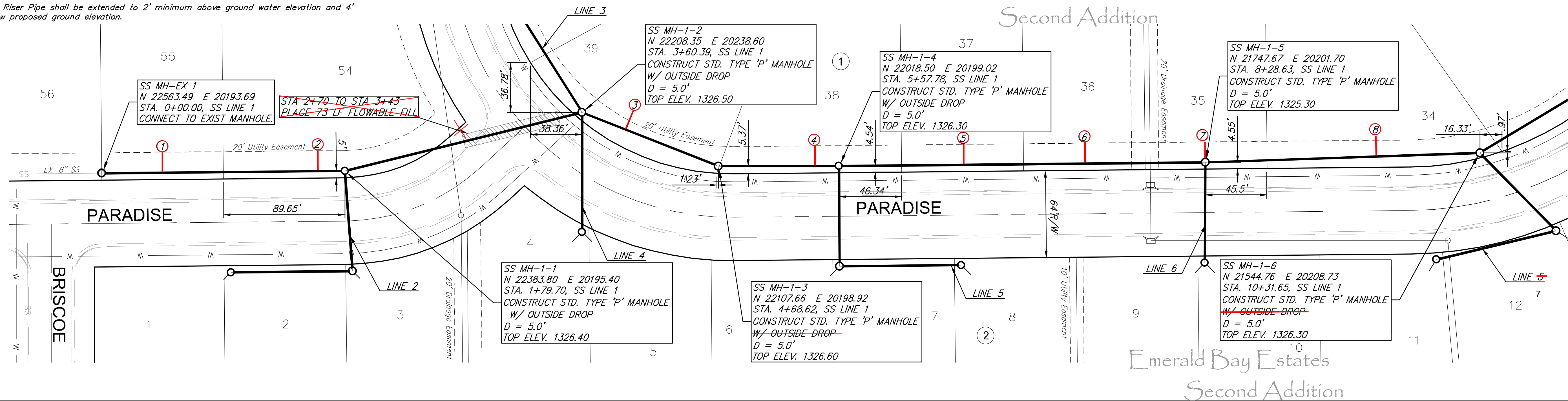
924 North Main (316) 264-8008
 Wichita, Kansas 67203 (316) 264-4621 fax
 www.rbkansas.com E-mail: info@rbkansas.com

SEWER SERVICE TABLE

NUMBER	TYPE	LOCATION			STATION \ DIRECTION	FOR INFORMATION ONLY		DISTANCE FROM MAIN TO RISER (L/T/R/T)	DISTANCE FROM	
		LOT NO.	BLOCK NO.	LINE NO.		APPROXIMATE LENGTH 4" PIPE	VERTICAL		HORIZONTAL	UPSTREAM MH
1	8" X 4" Tee Riser	55	1	1	0+25/L 47	15'	15'	15' Lt.	133'	47'
2	8" X 4" Tee Riser	54	1	1	1+60/L	15'	15'	15' Lt.	20'	160'
3	8" X 4" Tee Riser	39	1	1	3+25/L 96	14'	15'	15' Lt.	72'	36'
4	8" X 4" Tee Riser	38	1	1	5+48/L 44	13'	15'	15' Lt.	13'	76'
5	8" X 4" Tee Riser	37	1	1	6+50/L 44	12'	15'	15' Lt.	180'	91'
6	8" X 4" Tee Riser	36	1	1	7+28/L 41	12'	15'	15' Lt.	87'	184'
7	MH Riser	35	1	1	8+28.63/L	11'	15'	15' Lt.	@ MH	@ MH
8	8" X 4" Tee Riser	34	1	1	9+55/L 54	12'	15'	15' Lt.	77'	126'



NOTE: Vertical Riser Pipe shall be extended to 2' minimum above ground water elevation and 4' maximum below proposed ground elevation.

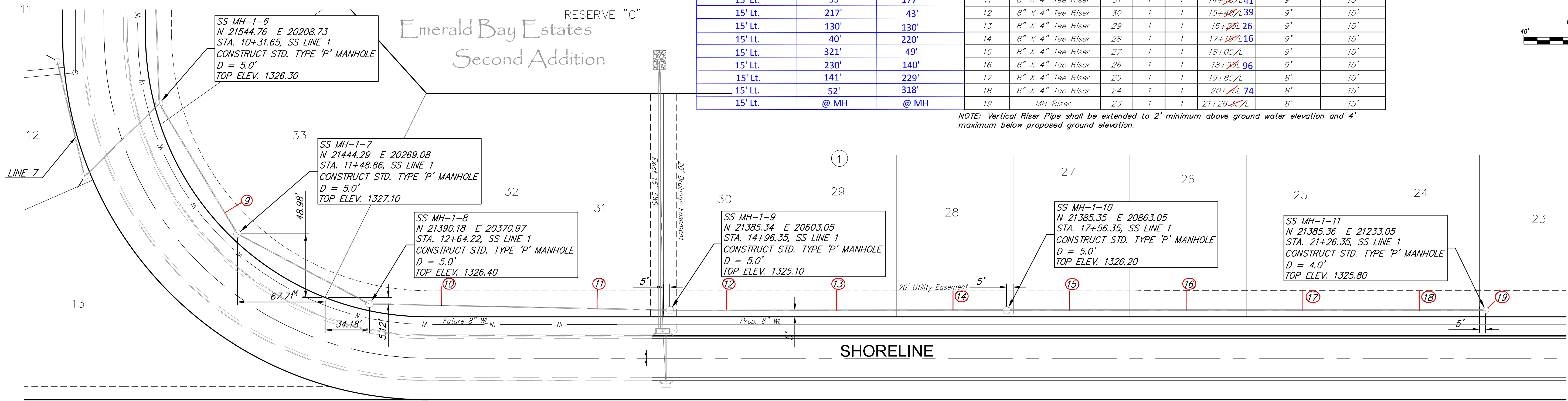
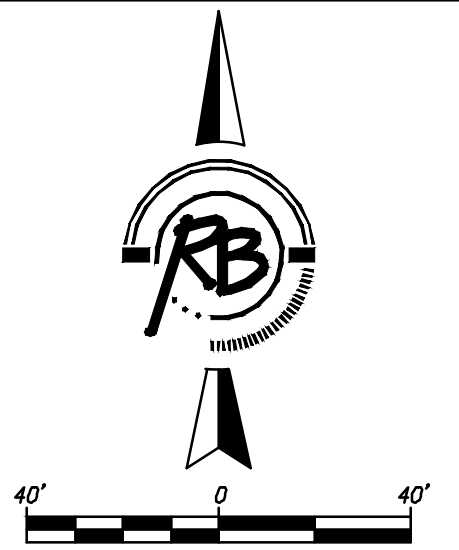


RUGGLES BOHM
 PROJECT NUMBER: 468-84638
 DRAWING FILE: SANITARY ENGINEERING BASE 802 SS Line 1
 DESIGN: AML
 UTILITY: AML
 DATE: Feb. 8, 2013
 REVIEW: AML
 REVIEW: AML
SANITARY SEWER IMPROVEMENTS
LINE 1
WICHITA, KANSAS
 RB JOB: 40058
 SHEET: 2 OF 13

SEWER SERVICE TABLE

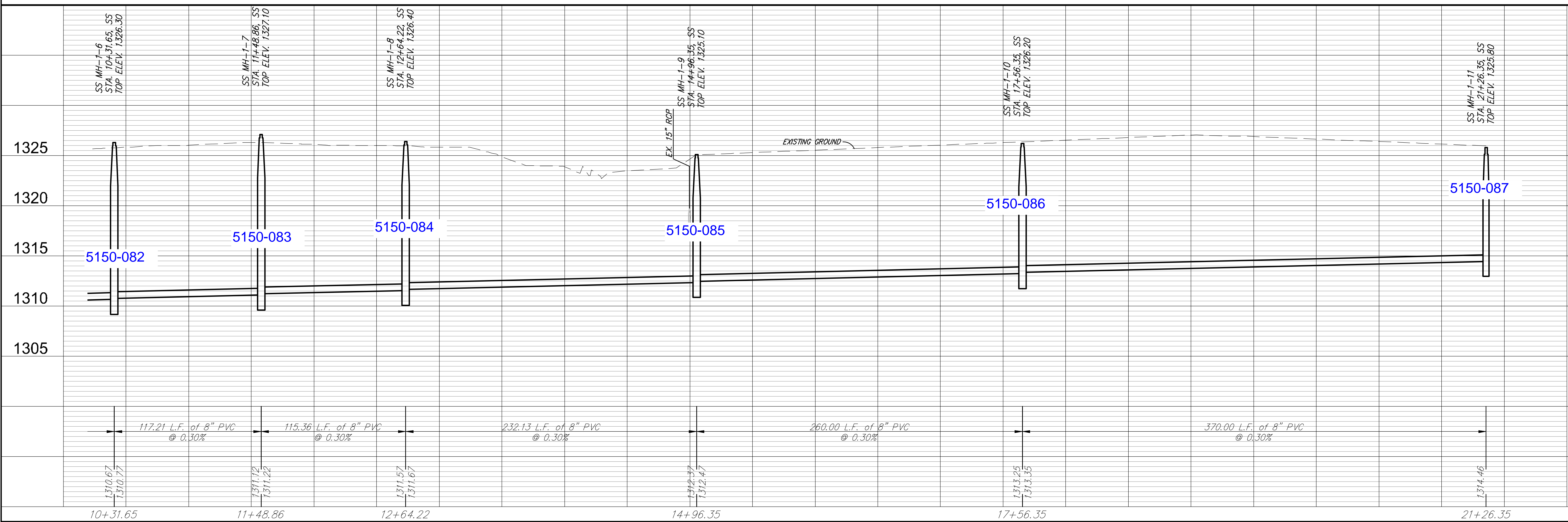
Distance from Main to Riser (lt./Rt.)	Distance from		NUMBER	TYPE	LOCATION			FOR INFORMATION ONLY		
	Upstream MH	Downstream MH			LOT NO.	BLOCK NO.	LINE NO.	STATION DIRECTION	APPROXIMATE LENGTH 4" PIPE	
15' Lt.	19'	98'	9	8" X 4" Tee Riser	33	1	1	11+30/L 29	12'	15'
15' Lt.	176'	56'	10	8" X 4" Tee Riser	32	1	1	13+20/L	11'	15'
15' Lt.	55'	177'	11	8" X 4" Tee Riser	31	1	1	14+40/L 41	9'	15'
15' Lt.	217'	43'	12	8" X 4" Tee Riser	30	1	1	15+40/L 39	9'	15'
15' Lt.	130'	130'	13	8" X 4" Tee Riser	29	1	1	16+20/L 26	9'	15'
15' Lt.	40'	220'	14	8" X 4" Tee Riser	28	1	1	17+10/L 16	9'	15'
15' Lt.	321'	49'	15	8" X 4" Tee Riser	27	1	1	18+05/L	9'	15'
15' Lt.	230'	140'	16	8" X 4" Tee Riser	26	1	1	18+90/L 96	9'	15'
15' Lt.	141'	229'	17	8" X 4" Tee Riser	25	1	1	19+85/L	8'	15'
15' Lt.	52'	318'	18	8" X 4" Tee Riser	24	1	1	20+75/L 74	8'	15'
15' Lt.	@ MH	@ MH	19	MH Riser	23	1	1	21+26.35/L	8'	15'

NOTE: Vertical Riser Pipe shall be extended to 2' minimum above ground water elevation and 4' maximum below proposed ground elevation.

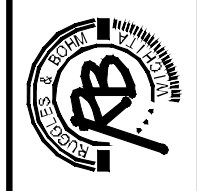


SHORELINE

Unplatted

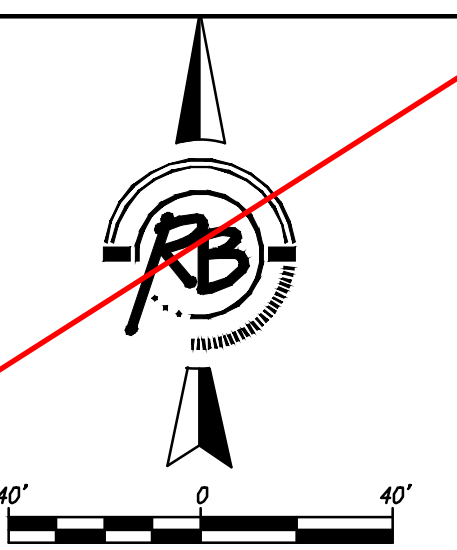


Ruggles & Dohm, P.A.
 Engineering, Surveying, Land Planning,
 Gas, Water, Sewer, Storm Drainage
 1010 24th Street
 Wichita, Kansas 67203
 www.rugglesanddohm.com



REVIEWED: [Signature]
 DESIGN: [Signature]
 PROJECT NUMBER: 468-84638
 DRAWING FILE: SANITARY ENGINEERING BASE FOR SS LINE 1
 DATE: Feb. 8, 2013

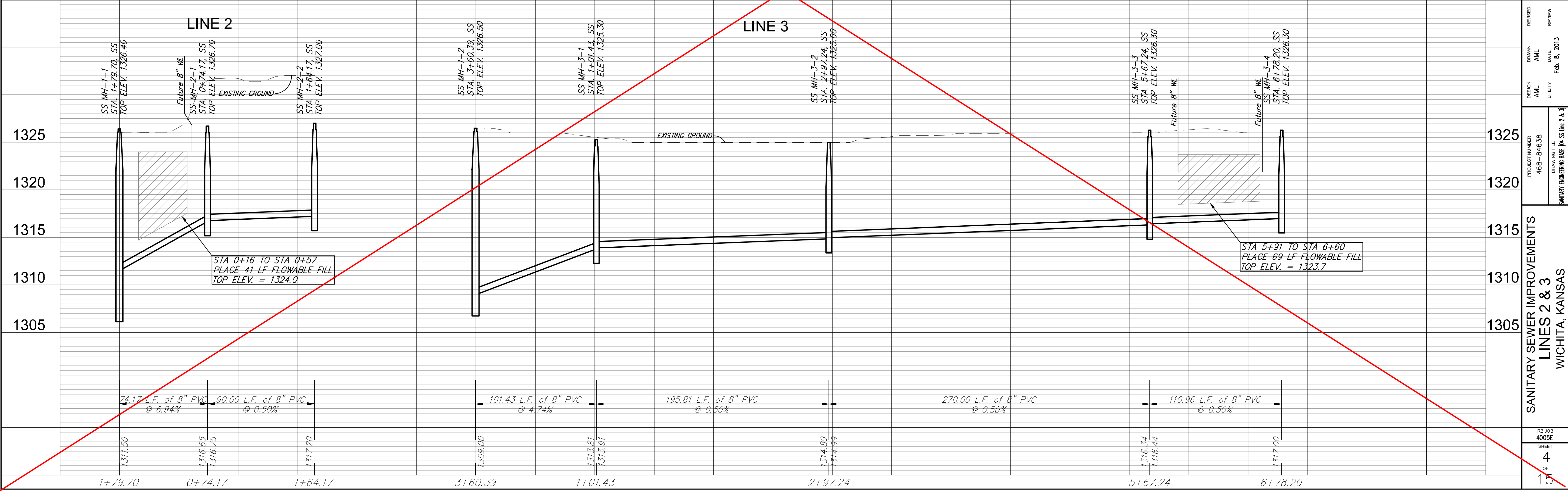
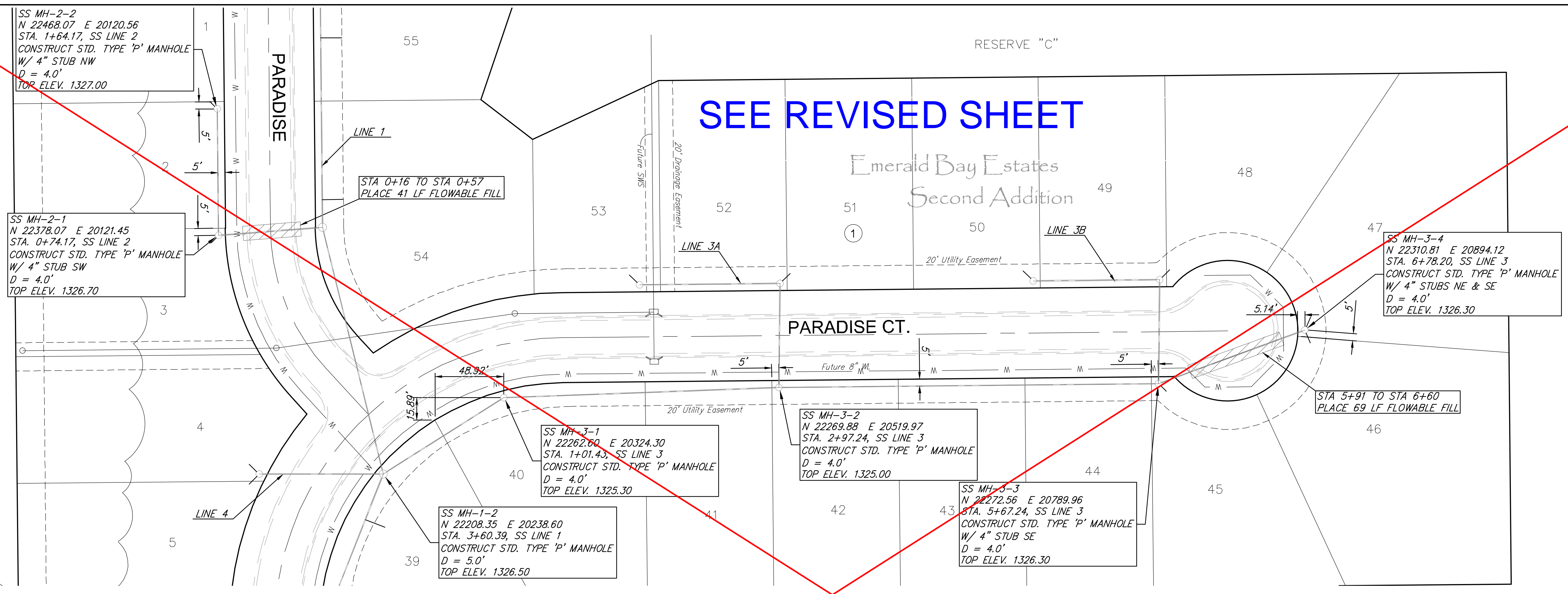
SANITARY SEWER IMPROVEMENTS
 LINE 1
 WICHITA, KANSAS
 SHEET 3 OF 15



SEE REVISED SHEET

*Emerald Bay Estates
Second Addition*

PARADISE CT.



**Sanitary Sewer Improvements
Lines 2 & 3
Wichita, Kansas**

PROJECT NUMBER: 468-84638
DRAWING FILE: SANITARY ENGINEERING BASE (M-SS Line 2 & 3)

REVISION	DATE	BY	APP'D
DESIGN	UTILITY	AML	AML
DRAWN	DATE	AML	AML
REVIEW	DATE	AML	AML

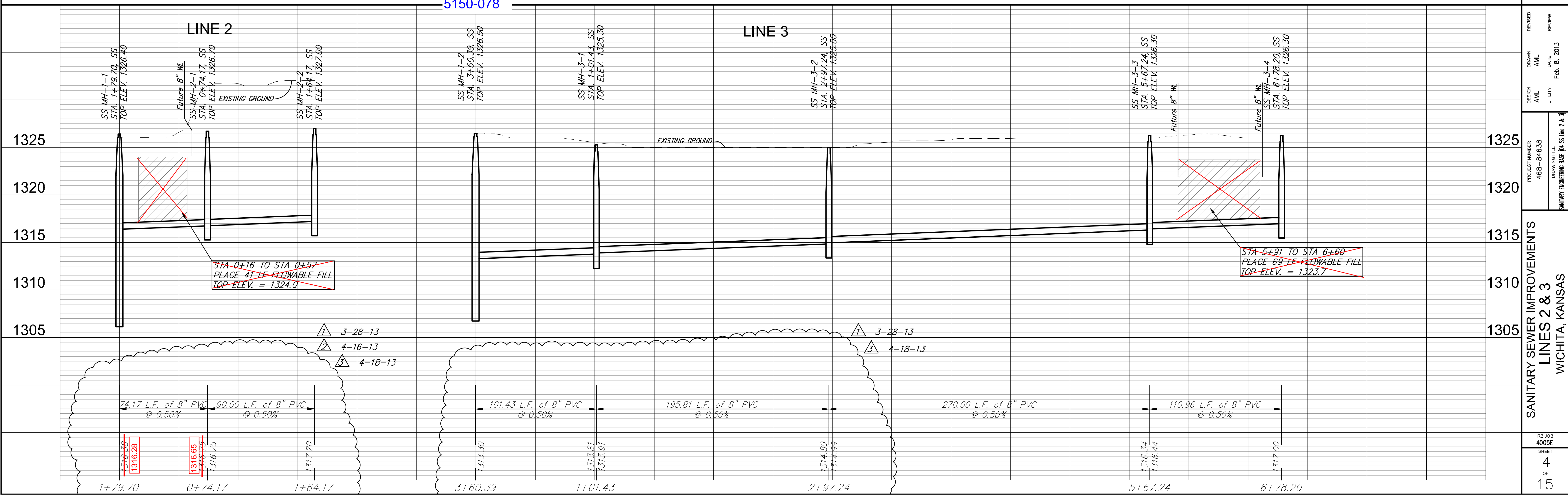
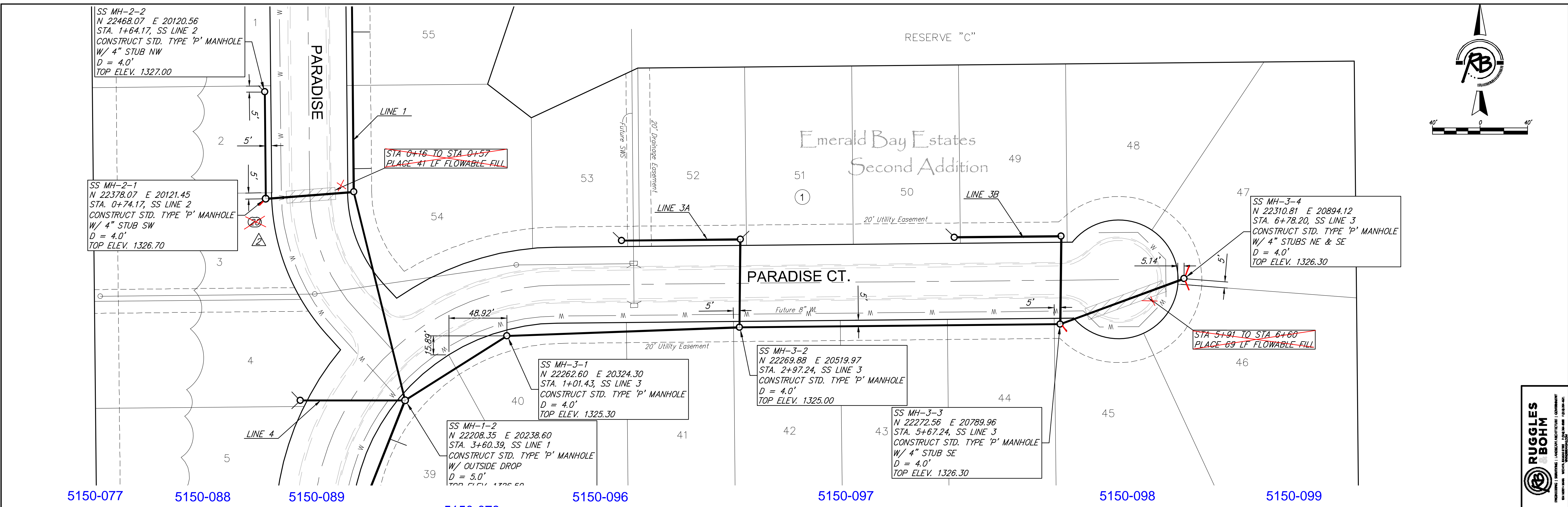
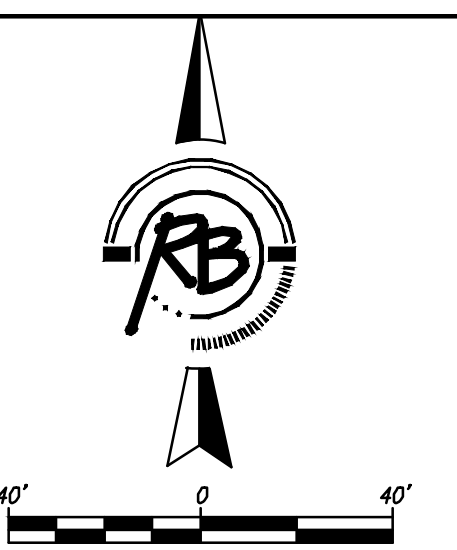
Feb. 8, 2013

REVISIONS:

4 OF 15 SHEETS

RB JOB # 40057

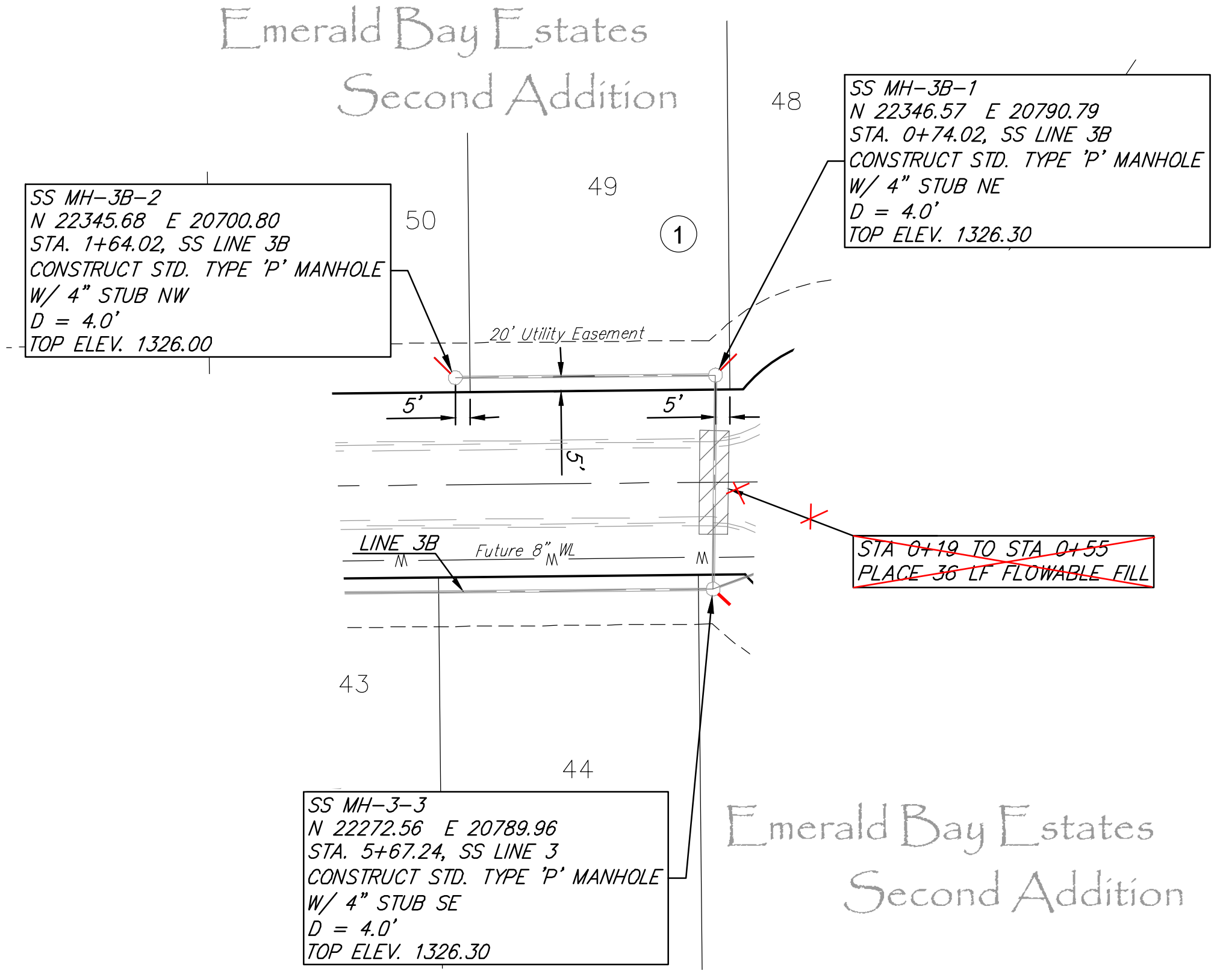
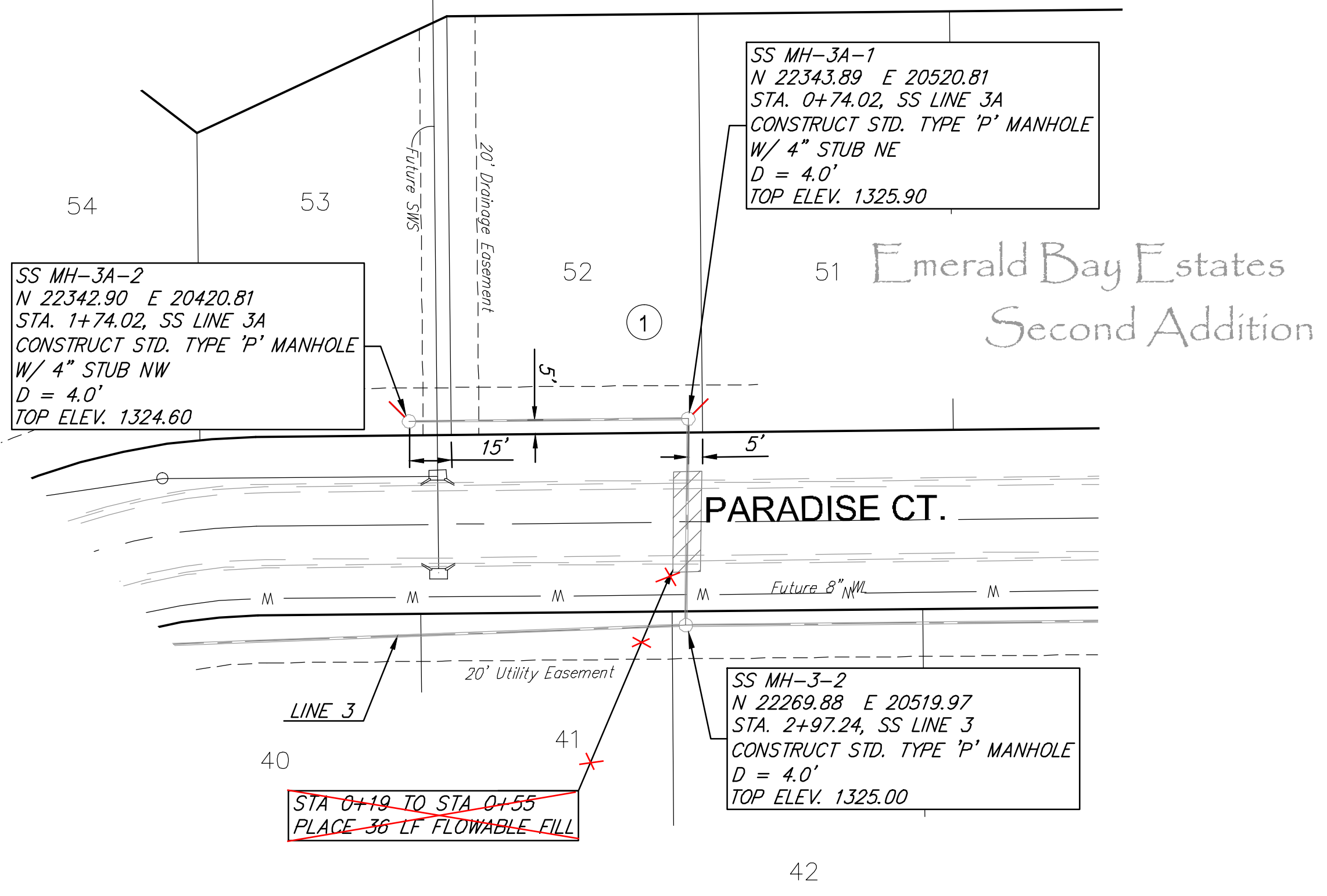
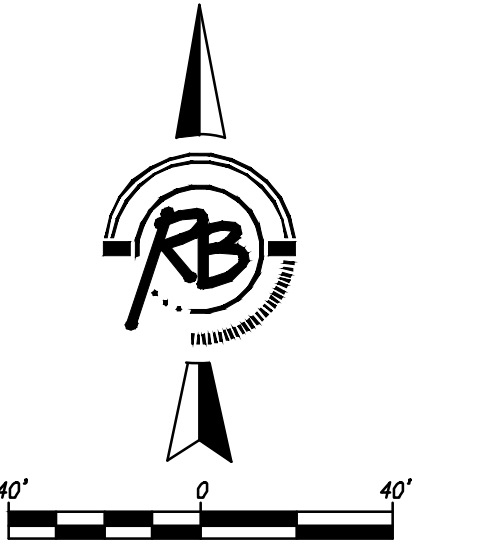




PROJECT NUMBER: 468-84638
 DRAWING FILE: SANITARY ENGINEERING BASE (M) SS Line 2 & 3
 DESIGN: AML
 UTILITY: DATE: Feb. 8, 2013
 REVIEW: AML
 REVIEW:

**SANITARY SEWER IMPROVEMENTS
 LINES 2 & 3
 WICHITA, KANSAS**

RB JOB # 40058
 SHEET # 4 OF 15



5150-097

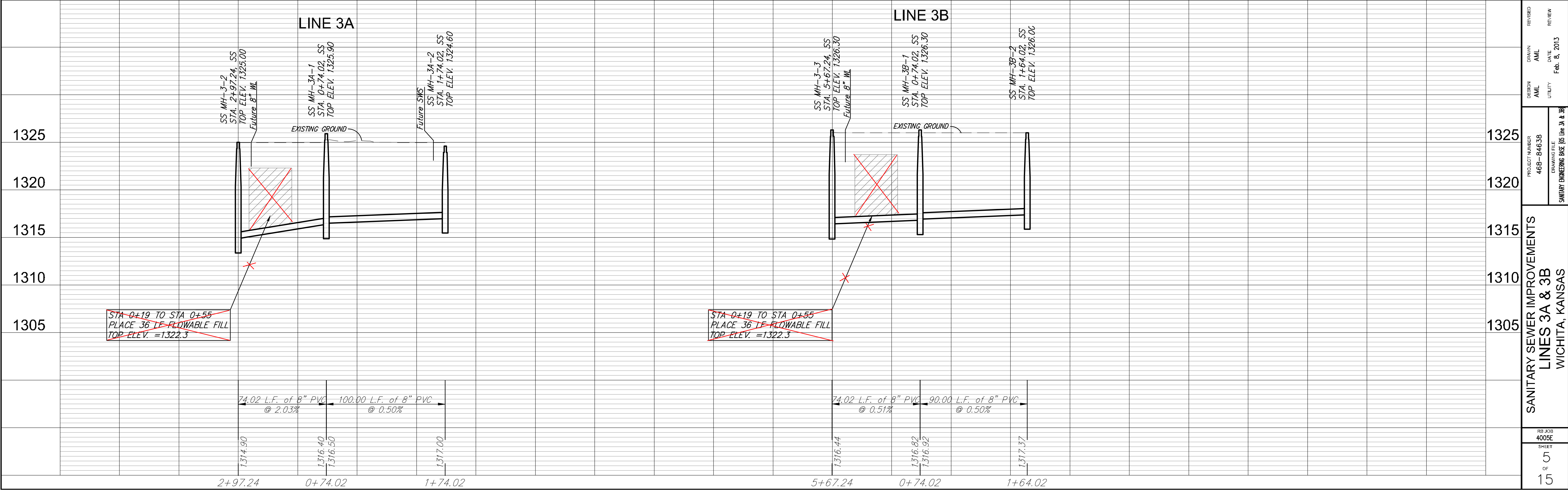
5150-100

5150-101

5150-098

5150-102

5150-103



REVISIONS

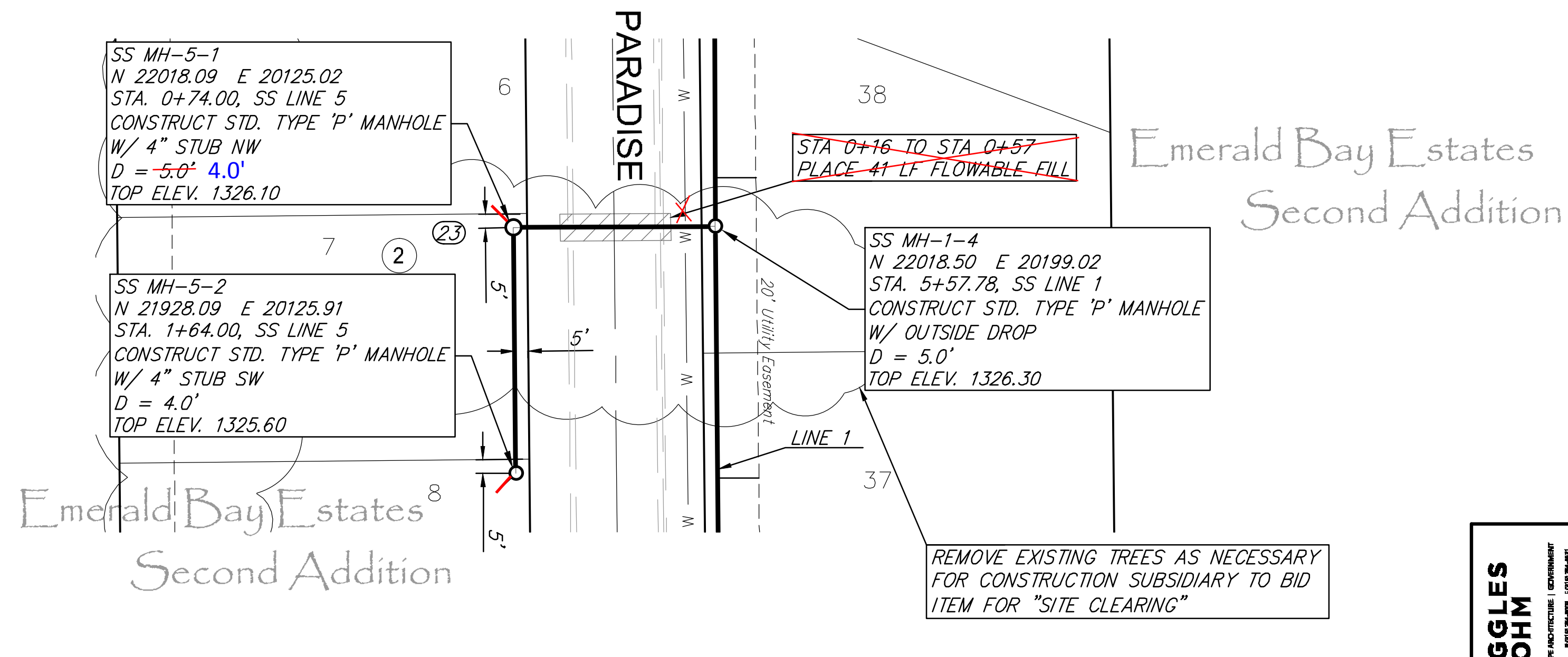
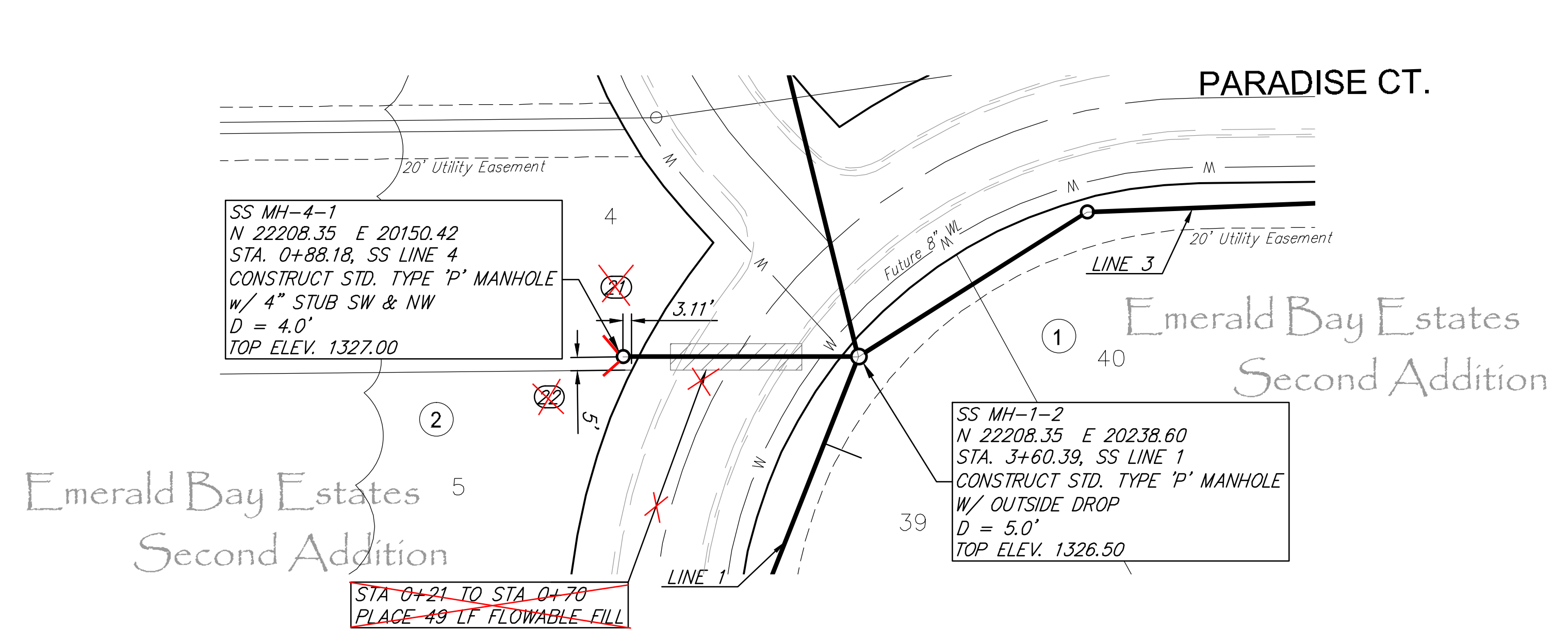
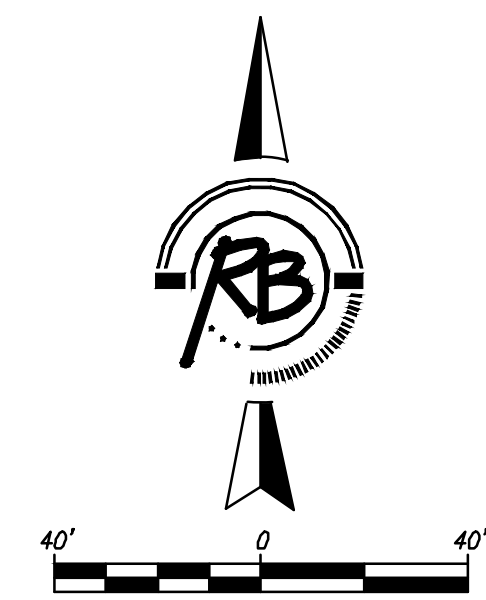
REVIEW	DATE	BY
REVIEW	Feb. 8, 2013	AML

DESIGN: AML
DRAWN: AML
UTILITY

PROJECT NUMBER: 468-84638
DRAWING FILE: SANITARY ENGINEERING BASE (SHEET 3A & 3B)

SANITARY SEWER IMPROVEMENTS
LINES 3A & 3B
WICHITA, KANSAS

RB JOB # 40058
SHEET 3 OF 15



5150-078

5150-090

5150-080

5150-091

5150-092

LINE 4	LINE 5
<p>SS MH-1-2 STA. 3+60.39, SS TOP ELEV. 1326.50</p> <p>Future 8" M.L.</p> <p>EXISTING GROUND</p> <p>SS MH-4-1 STA. 0+88.18, SS TOP ELEV. 1327.00</p> <p>STA 0+21 TO STA 0+70 PLACE 49 LF FLOWABLE FILL TOP ELEV. = 1324.3</p> <p>88.18 L.F. of 8" PVC @ 0.50%</p> <p>7314.99 7315.43</p> <p>3+60.39 0+88.18</p> <p>3-28-13 4-18-13</p>	<p>SS MH-1-4 STA. 5+57.78, SS TOP ELEV. 1326.30</p> <p>Future 8" M.L.</p> <p>EXISTING GROUND</p> <p>SS MH-5-1 STA. 0+74.00, SS TOP ELEV. 1326.10</p> <p>SS MH-5-2 STA. 1+64.00, SS TOP ELEV. 1325.60</p> <p>STA 0+16 TO STA 0+57 PLACE 41 LF FLOWABLE FILL TOP ELEV. = 1323.50</p> <p>74.00 L.F. of 8" PVC @ 0.50% 90.00 L.F. of 8" PVC @ 0.50%</p> <p>7314.73 7314.50 7314.60 7315.05</p> <p>5+57.78 0+74 1+64</p> <p>3-28-13 4-18-13</p>



REVIEW DATE REVIEW

DESIGN AML UTILITY DATE Feb. 8, 2013

PROJECT NUMBER 468-84638

DRAWING FILE SANITARY ENGINEERING BASE (06 Dec 1 & 3)

SANITARY SEWER IMPROVEMENTS
LINES 4 & 5
WICHITA, KANSAS

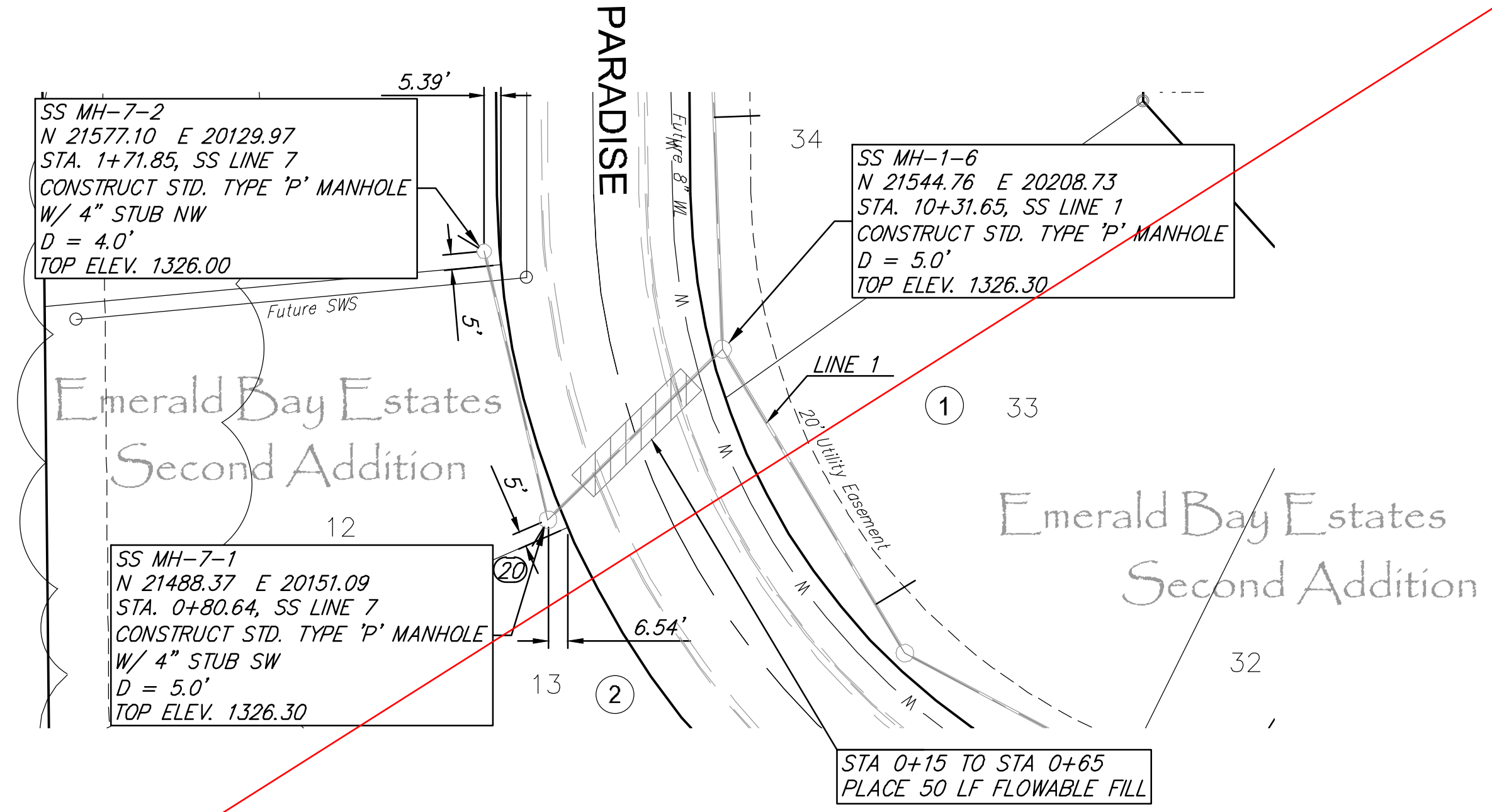
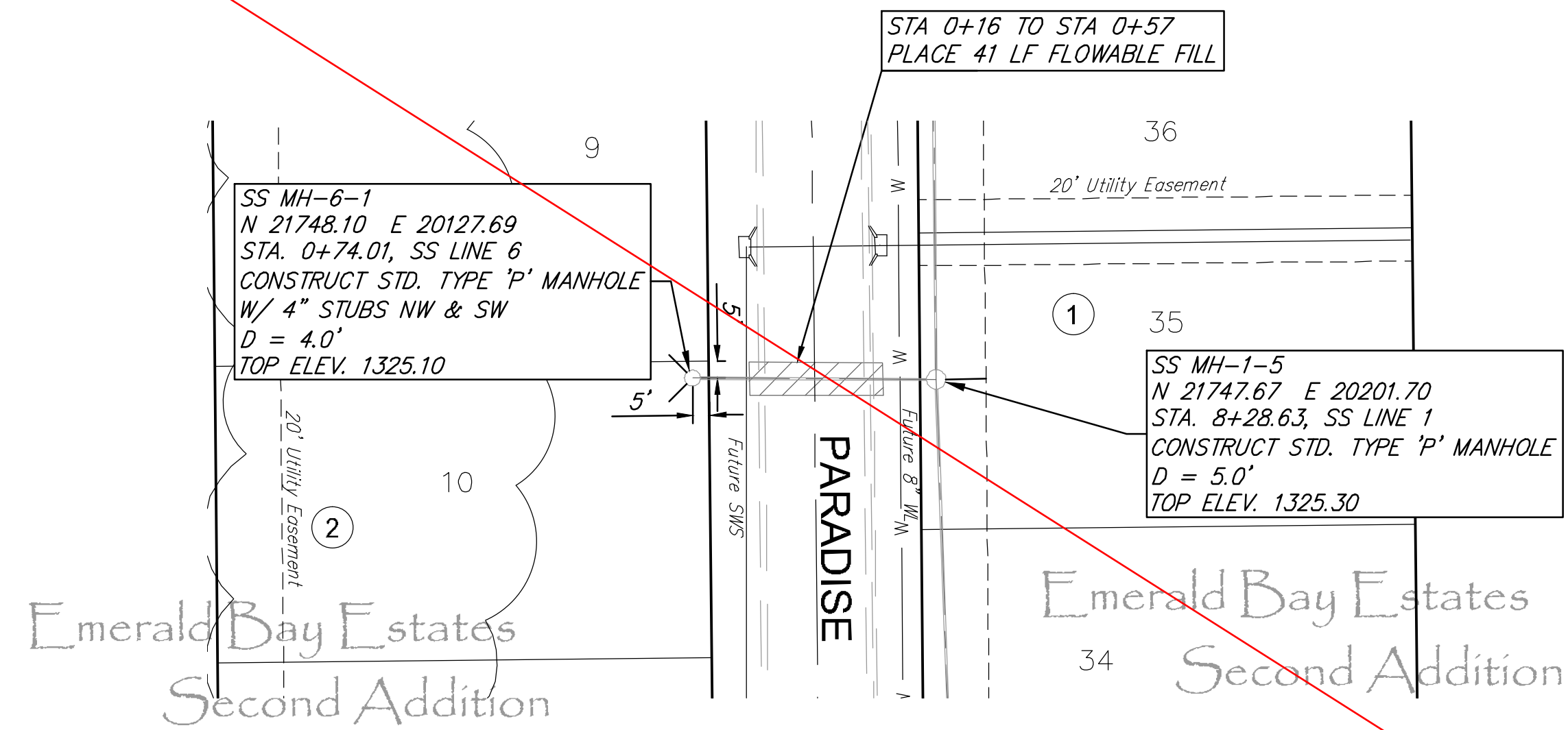
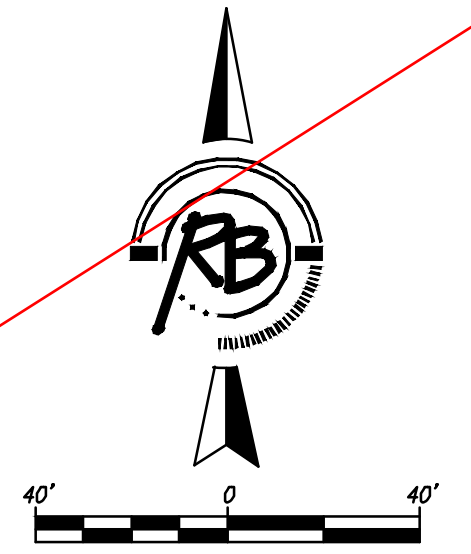
RS JOB 4005E

SHEET 6 OF 15

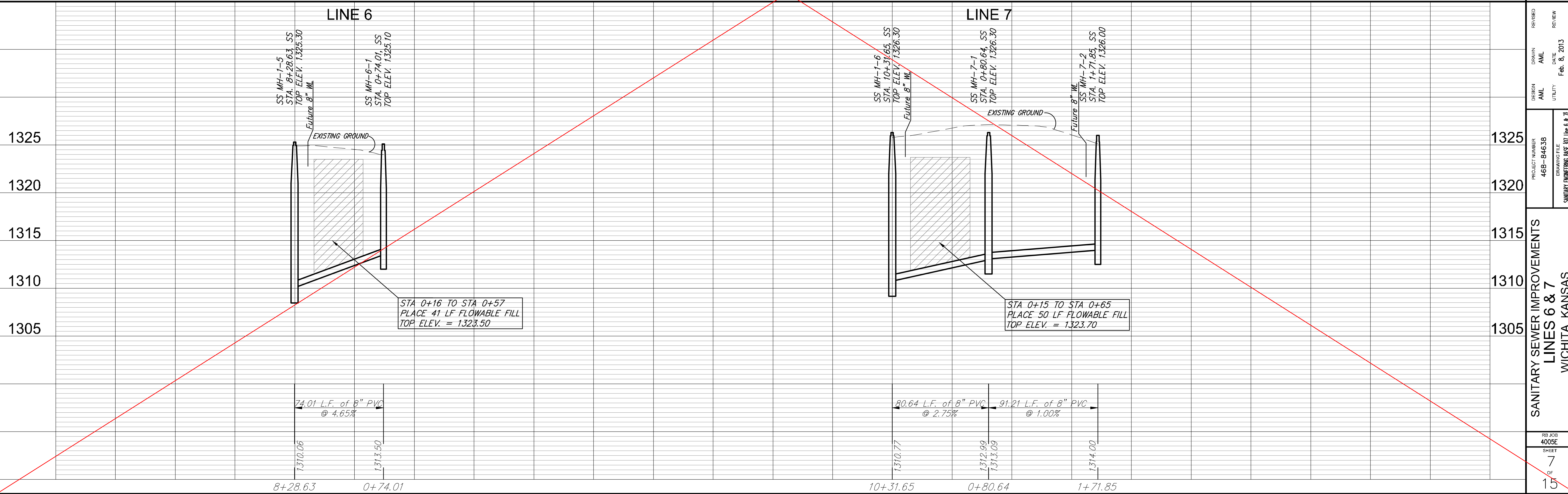
SEWER SERVICE TABLE

NUMBER	TYPE	LOCATION				FOR INFORMATION ONLY	
		LOT NO.	BLOCK NO.	LINE NO.	STATION \ DIRECTION	APPROXIMATE LENGTH 4" PIPE	VERTICAL
20	MH Riser	13	2	7	0+80.64/L	9'	15'

NOTE: Vertical Riser Pipe shall be extended to 2' minimum above ground water elevation and 4' maximum below proposed ground elevation.



SEE REVISED SHEET



REVISIONS

REVIEW	DATE	BY
AWL	Feb. 8, 2013	AWL

DESIGN: AWL
DRAWN: AWL
PROJECT NUMBER: 468-84638
DRAWING FILE: SANITARY ENGINEERING BASE (07 Line 6 & 7)

**SANITARY SEWER IMPROVEMENTS
LINES 6 & 7
WICHITA, KANSAS**

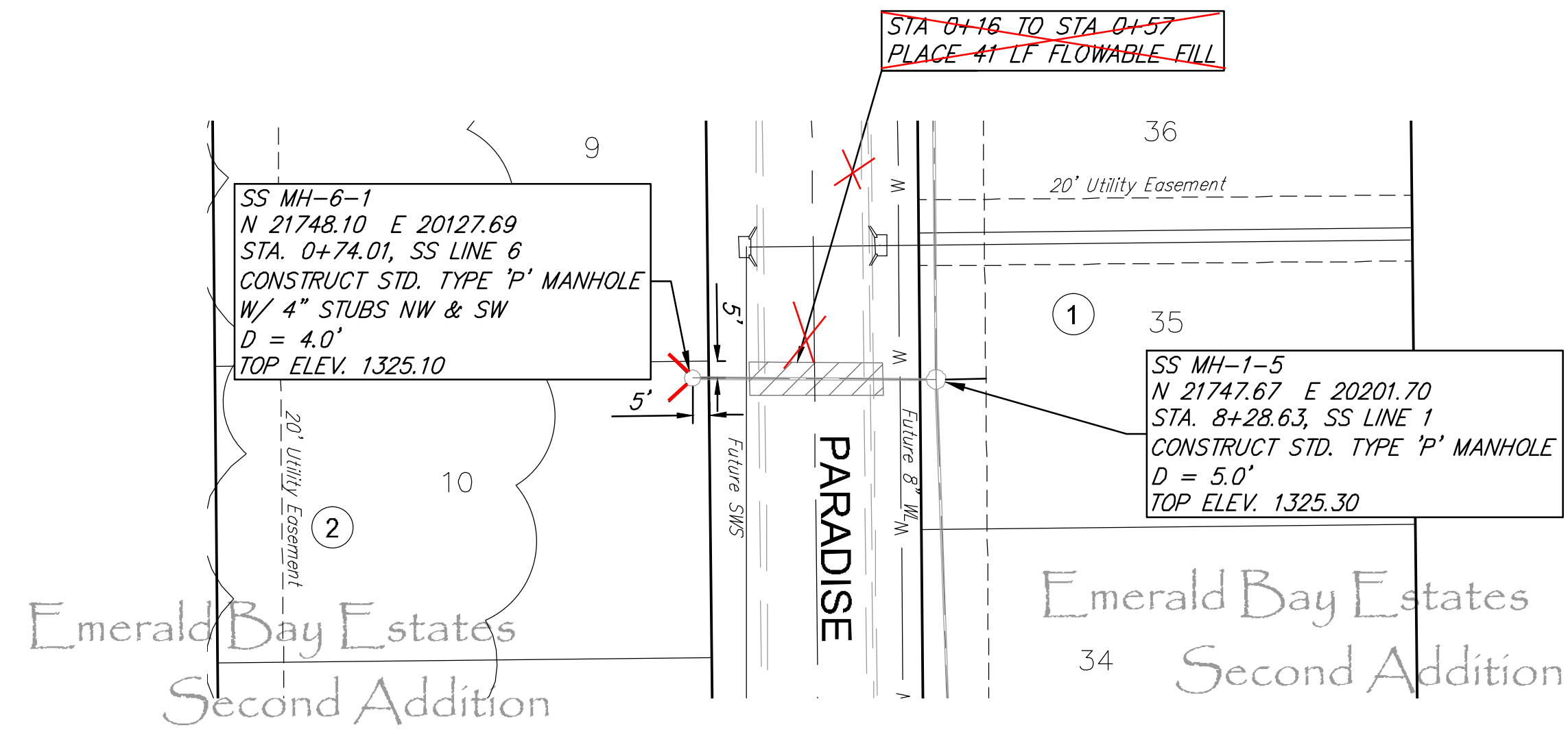
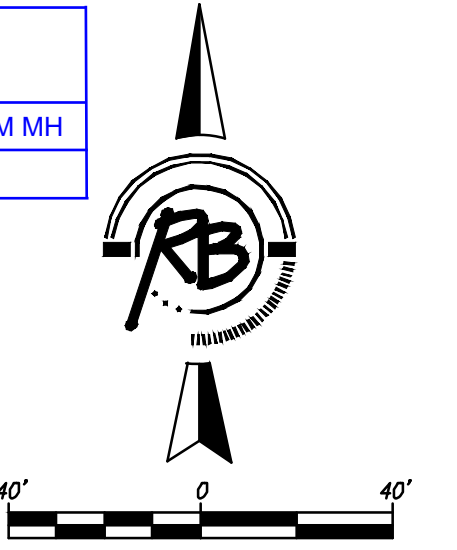
RD JOB: 40054
SHEET: 7 OF 15

Kuggles & Dohm, P.A.
Engineering, Surveying, Land Planning,
Gas, Water, Sewer, Storm Drainage
Wichita, Kansas 67203
www.kdpe.com

SEWER SERVICE TABLE

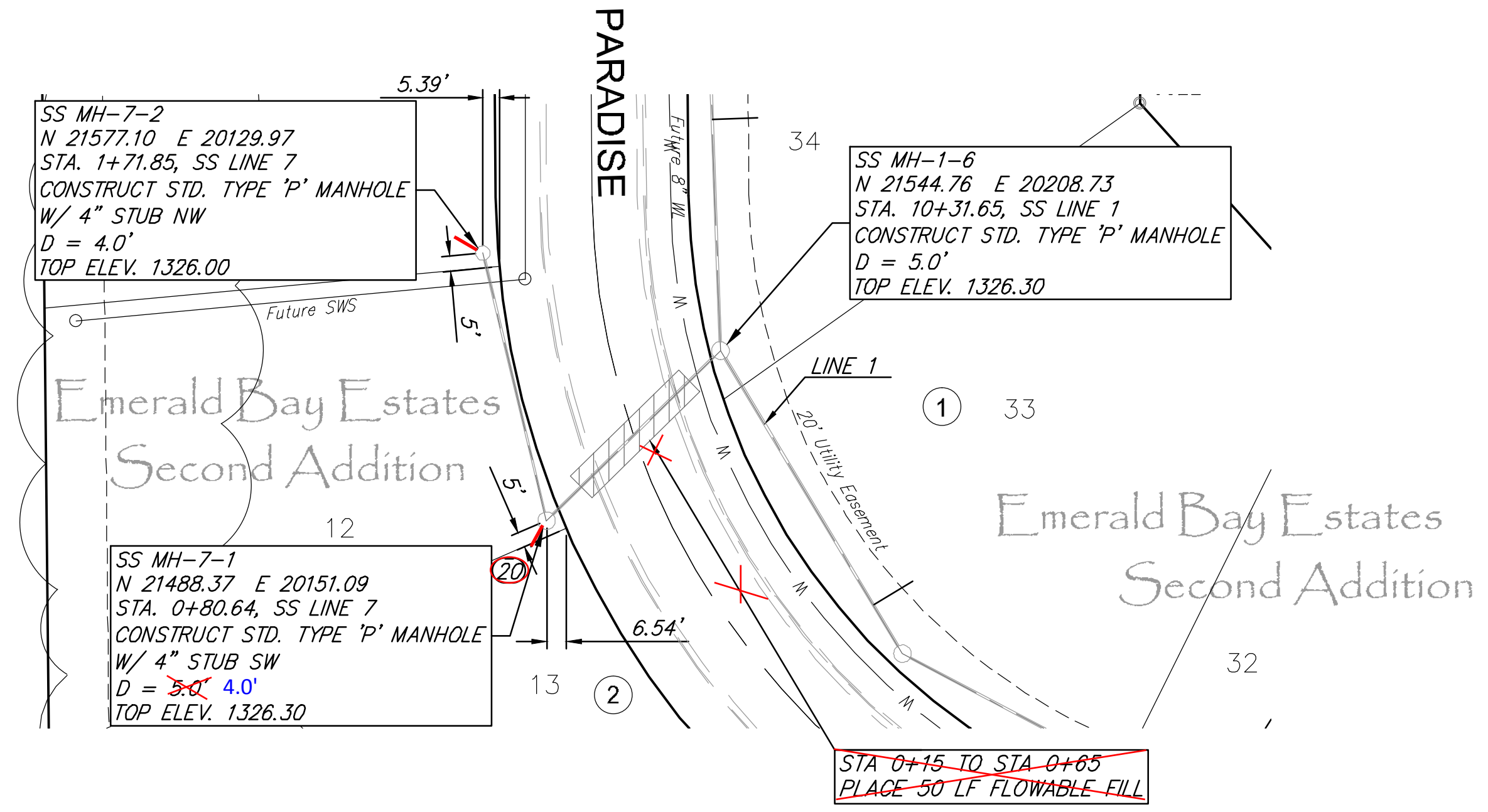
NUMBER	TYPE	LOCATION				FOR INFORMATION ONLY		DISTANCE FROM MAIN TO RISER (LT/RT)	DISTANCE FROM	
		LOT NO.	BLOCK NO.	LINE NO.	STATION \ DIRECTION	APPROXIMATE LENGTH 4" PIPE	VERTICAL		HORIZONTAL	UPSTREAM MH @ MH
20	MH Riser	13	2	7	0+80.64/L	9'	15'	15' LT.	@ MH	@ MH

NOTE: Vertical Riser Pipe shall be extended to 2' minimum above ground water elevation and 4' maximum below proposed ground elevation.



5150-081

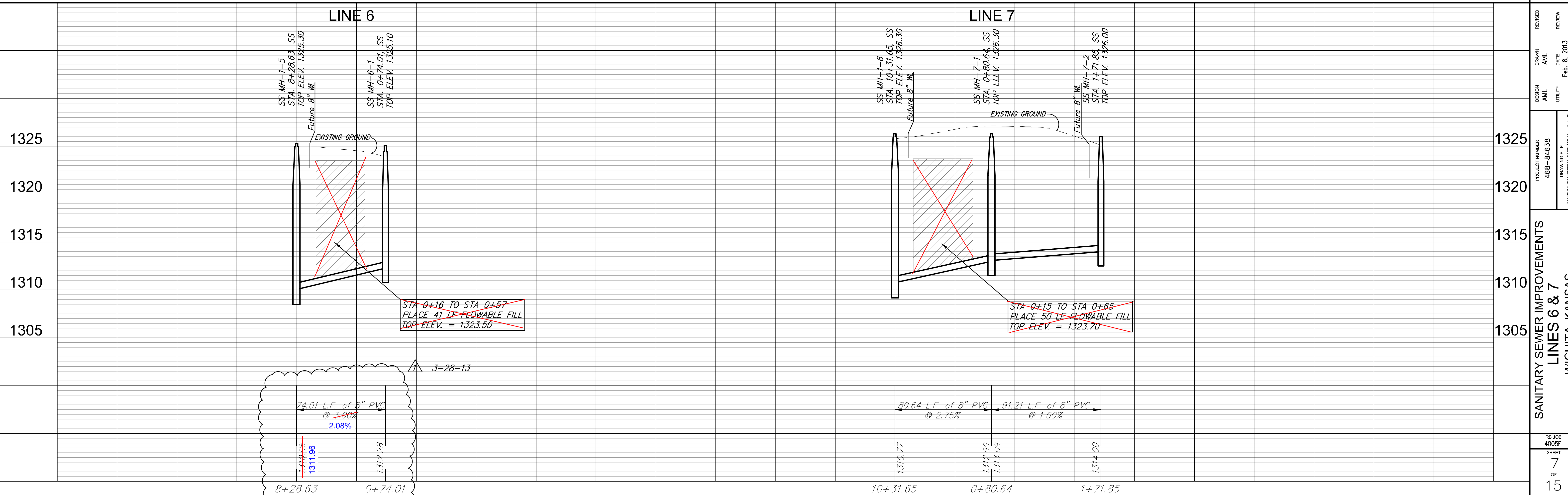
5150-093



5150-082

5150-094

5150-095



REVIEWED
DRAWN
DESIGN
PROJECT NUMBER
468-84638
DRAWING FILE
SANITARY ENGINEERING BASE (07 Line 6 & 7)

REVIEW
DATE
Feb. 8, 2013

SANITARY SEWER IMPROVEMENTS
LINES 6 & 7
WICHITA, KANSAS

40058
SHEET
7
OF
15