

WL 1, Sta. 0+00.00
Existing 12" Water Main *
1- 12" x 8" Tapping Sleeve
1- 8" Tapping Valve
(Tapping Sleeve and Valve to be furnished and set by City of Wichita Water Dept.)
1- 6" Valve Box
Top Valve Box El. = 1324.4

WL 1, Sta. 0+05.00
1- 8" 11 1/4° Bend
Defl. = 17°00'14"

CAUTION !!!
10" PVC Force Main
Contractor to verify force main elevation before construction of waterline.
Adjust waterline as needed to maintain a minimum 2 foot vertical separation.
See Detail, this sheet. Costs for this adjustment shall be included in the bid item "Pipe, WL 8", Adjustment at Force Main". Item will not be paid if no adjustment is needed.

CAUTION !!!
Buried CATV (Cox)
Buried Telephone (AT&T)
Buried Fiber Optic (Zayo)

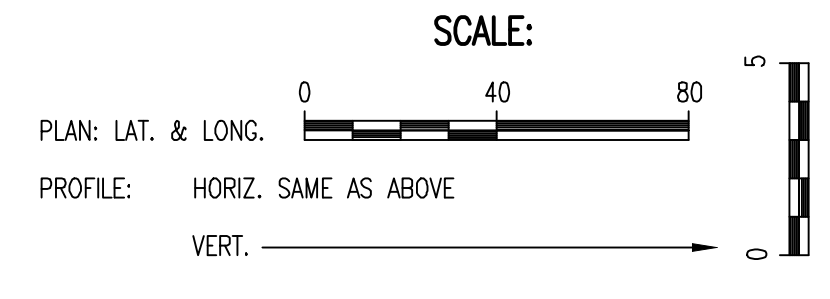
WL 1, Sta. 2+39.75
1- 8" 11 1/4° Bend
Defl. = 5°15'14"

WL 1, Sta. 4+74.95
1- 8" 11 1/4° Bend
Defl. = 11°15'00"

WL 1, Sta. 5+15.96
1- 8" 11 1/4° Bend
Defl. = 11°15'00"

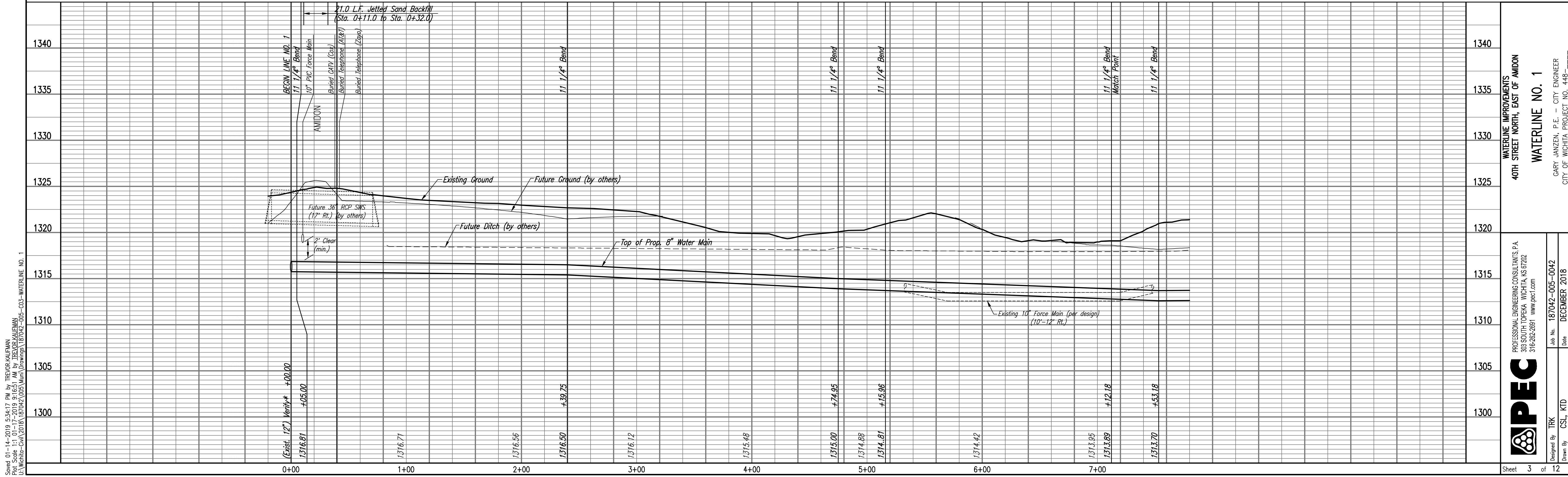
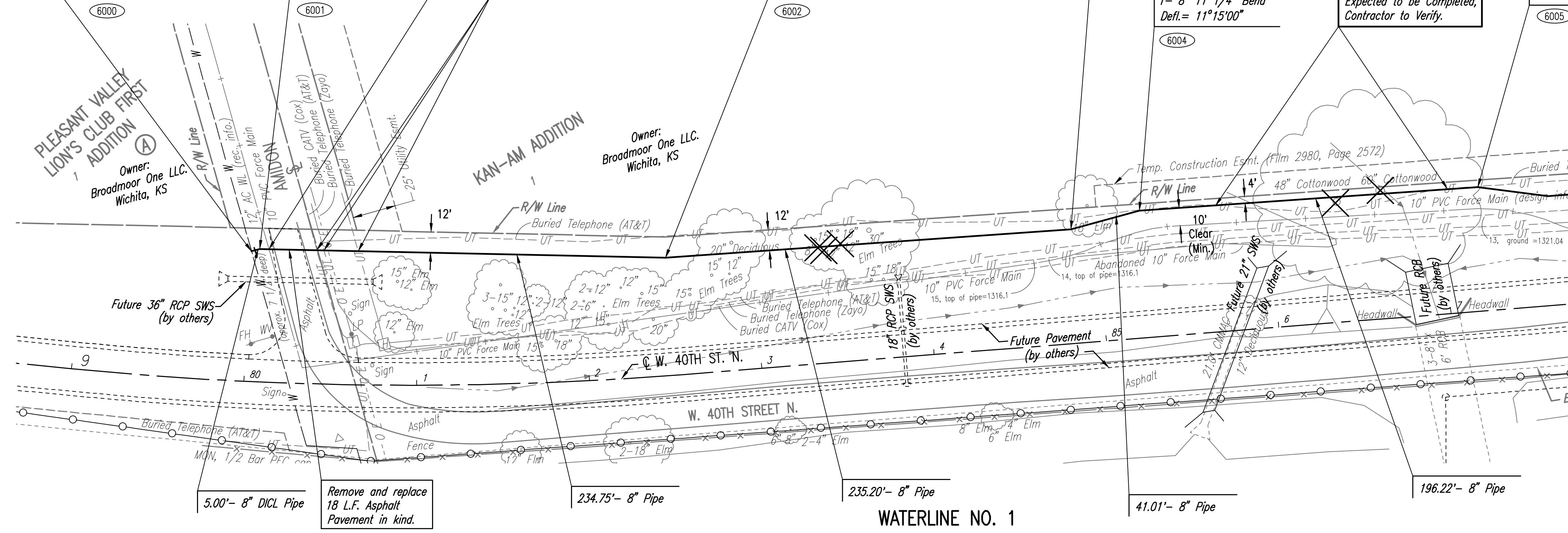
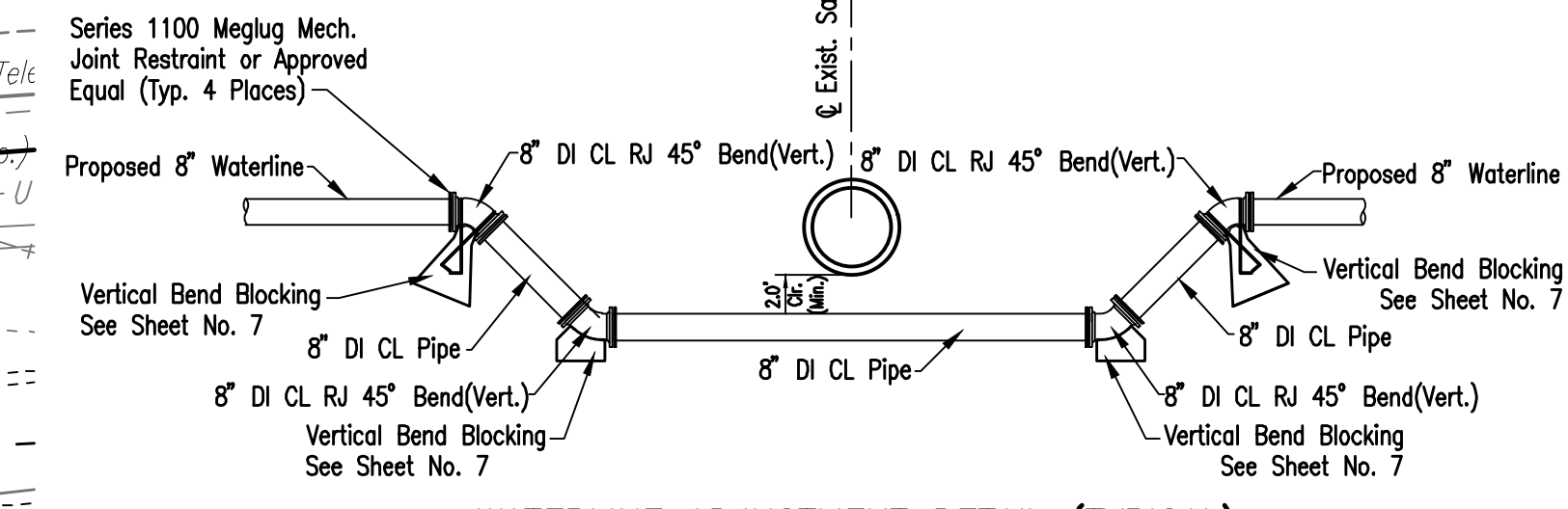
CAUTION !!!
Buried Telephone (AT&T)
Proposed Relocation
Expected to be Completed,
Contractor to Verify.

WL 1, Sta. 7+12.18
1- 8" 11 1/4° Bend
Defl. = 11°15'00"
MATCH POINT



6000 - SEE SHEET NO. 2 FOR WATERLINE COORDINATES (TYP.)
X - DENOTES TREE REMOVAL

* PRIOR TO BEGINNING CONSTRUCTION, THE CONTRACTOR SHALL EXCAVATE THE EXISTING 12" WATERLINE AT STATION 0+00.00 TO VERIFY PIPE SIZE, TYPE, FITTINGS, AND HORIZONTAL AND VERTICAL LOCATION. THE CONTRACTOR SHALL REPORT HIS FINDINGS TO THE ENGINEER SO THAT ANY NECESSARY PLAN MODIFICATIONS CAN BE MADE. ANY ADDITIONAL LABOR OR MATERIALS NECESSARY TO COMPLETE THE CONNECTION SHALL BE CONSIDERED SUBSIDIARY TO THE PROJECT.



Served 01-14-2019 5:34:17 PM by TREVOR KAUFMAN
 Plot Scale 1:1 01-17-2019 9:16:51 AM by TREVOR KAUFMAN
 U:\Wichita-Civil\2018\187042\005\Wm\Drawings\187042-005-03-WATERLINE NO. 1

WATERLINE NO. 1
 WATERLINE IMPROVEMENTS
 40TH STREET NORTH, EAST OF AMIDON
 PROFESSIONAL ENGINEERING CONSULTANTS P.A.
 308 SOUTH TOPEKA WICHITA, KS 67202
 316-262-2681 www.pec1.com
 Designed By: TRK
 Drawn By: CSL, KTD
 Job No. 187042-005-0042
 Date: DECEMBER 2018
 GARY JANZEN, P.E. - CITY ENGINEER
 CITY OF WICHITA PROJECT NO. 448-