

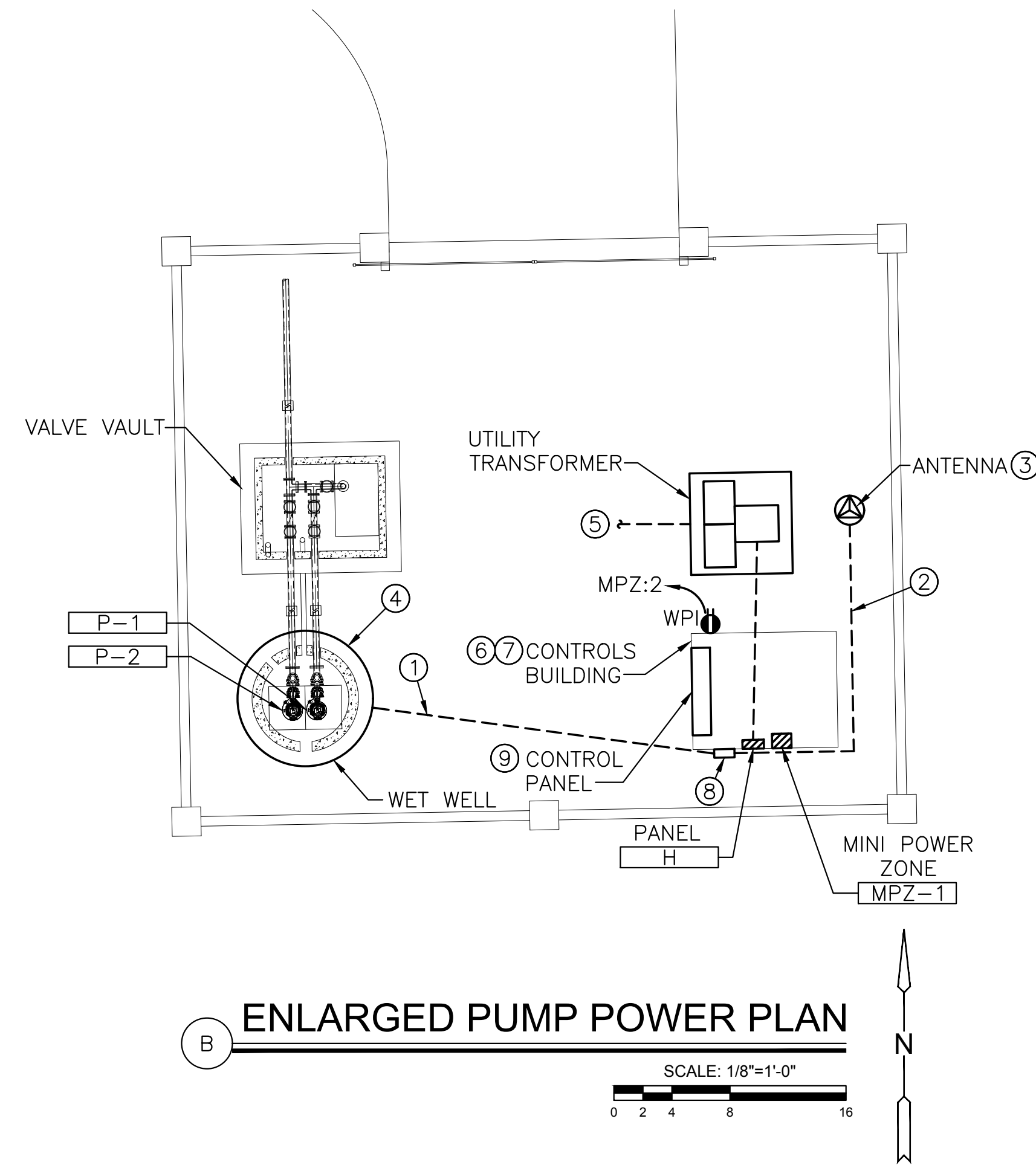
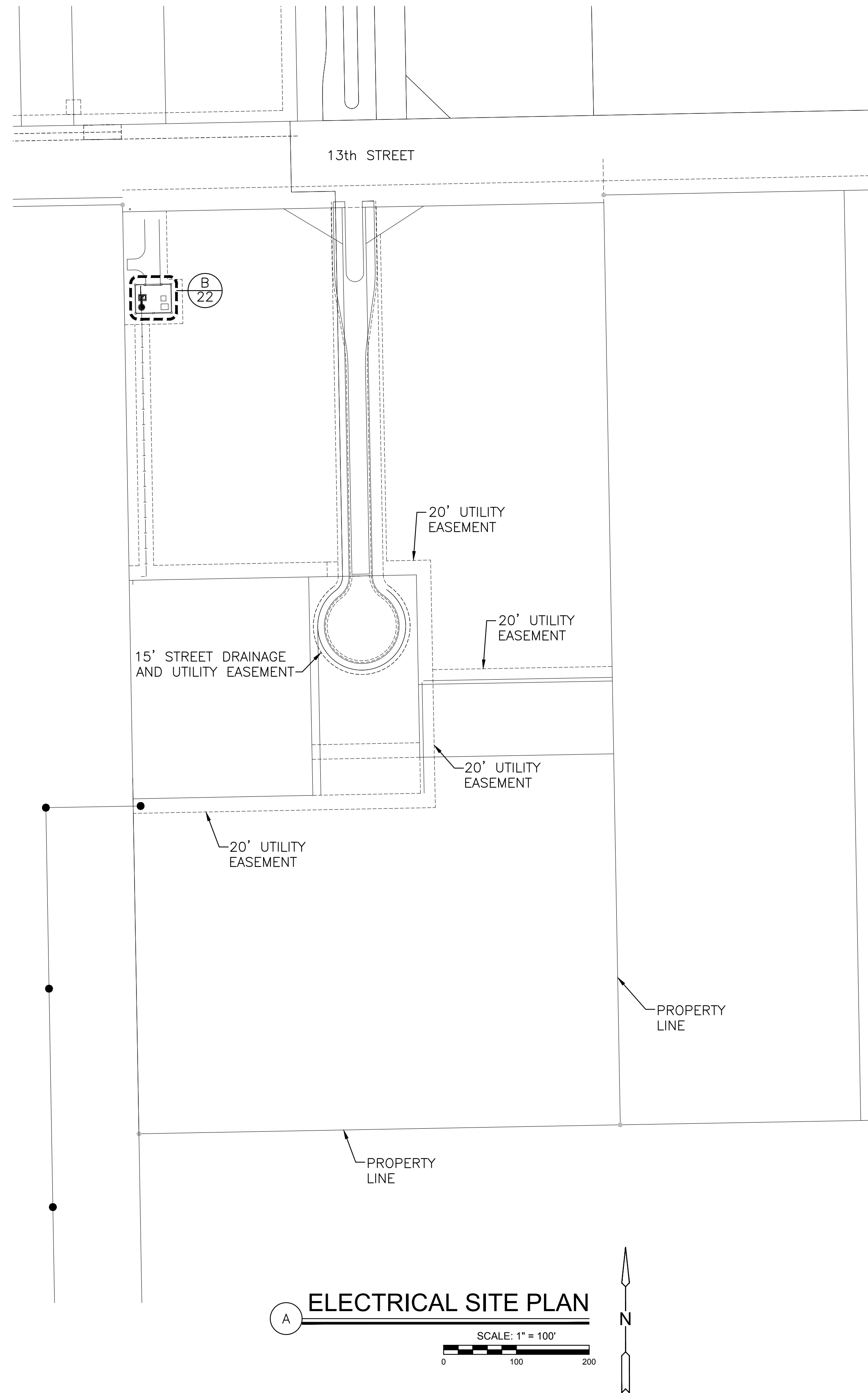
©2019
MKEC Engineering
All Rights Reserved
www.mkec.com
These drawings and their contents, including, but not limited to, all concepts, designs, & ideas are the exclusive property of MKEC Engineering (MKEC), and may not be used or reproduced in any way without the express consent of MKEC.

**LIFT STATION
ELECTRICAL
PLAN**

PROJECT NO.	468-85386	
DATE	JAN 2019	
SCALE	REF. PLAN	
DESIGNED	DRAWN	CHECKED
CNG	CV	JRBW

0	ISSUED FOR BID	1-15-19
NO.	REVISION	DATE

SHEET NO.



KEYED NOTES

1. PROVIDE PVC-COATED RMC CONDUIT BETWEEN CONTROLS BUILDING ENCLOSURE AND WET WELL FOR CONTROLS AND POWER CABLING. STUB INTO JUNCTION BOX MOUNTED ON BUILDING EXTERIOR. PROVIDE CONDUIT SEALS ON CONDUIT BETWEEN EXIT FROM GROUND AND FIRST CONDUIT JOINT.
2. PROVIDE CABLE IN CONDUIT BETWEEN CONTROLS BUILDING AND ANTENNA FOR SCADA CABLING. SIZE PER NEC CABLE FILL REQUIREMENTS. COORDINATE ALL REQUIREMENTS WITH CONTROLS CONTRACTOR.
3. PROVIDE AND INSTALL ANTENNA AND ALL REQUIRED CONNECTIONS FROM TELEMETRY PANEL FOR WIRELESS SCADA SYSTEM. COORDINATE ALL REQUIREMENTS WITH CONTROLS CONTRACTOR. INSTALL SYSTEM GROUND ROD DIRECTORY BELOW ANTENNA.
4. WET WELL PUMPS, FLOAT SWITCHES, AND INSTRUMENTATION TO BE PROVIDED BY PUMP VENDOR. INSTALL FLOAT SWITCHES AND ALL INSTRUMENTATION. PROVIDE ALL REQUIRED ELECTRICAL AND CONTROLS CONNECTIONS FOR A COMPLETE AND FUNCTIONAL SYSTEM. PROVIDE STAINLESS STEEL GRIPS AND SUPPORTS FOR CONDUIT AND CABLE WITHIN WET WELL. SUPPORT PER NEC REQUIREMENTS.
5. PROVIDE (1)-4" UNDERGROUND PVC CONDUIT FOR UTILITY PRIMARY TO MEDIUM VOLTAGE CABINET. COORDINATE LOCATION AND ALL REQUIREMENTS WITH WESTAR.
6. E.C. SHALL VERIFY INTERIOR LAYOUT OF CONTROL BUILDING WITH BUILDING VENDOR PRIOR TO ROUGH-IN AND INSTALLATION OF UNDERGROUND CONDUIT. ALL NEC CLEARANCES AND WORKING SPACE SHALL BE PROVIDED.
7. CONTROLS BUILDING, INCLUDING PANELBOARD, INTERIOR LIGHTING, EXTERIOR LIGHTING, LIGHTING CONTROLS, AND HVAC TO BE PROVIDED, INSTALLED, AND PRE-WIRED BY PUMP VENDOR. CONTROL PANEL TO BE PROVIDED BY PUMP VENDOR AND INSTALLED BY E.C. TELEMETRY PANEL TO BE PROVIDED BY CONTROLS CONTRACTOR AND INSTALLED BY E.C. PROVIDE ALL REQUIRED CONNECTIONS BETWEEN TELEMETRY PANEL AND CONTROL PANEL. COORDINATE WITH PUMP VENDOR AND CONTROLS CONTRACTOR.
8. PROVIDE NEMA 4X, STAINLESS STEEL ENCLOSURE WITH TERMINAL BLOCKS AS REQUIRED FOR CONNECTION OF PUMP AND INSTRUMENTATION CABLES TO FIELD WIRING. SIZE OF ENCLOSURE AND QUANTITY OF BLOCKS TO BE DETERMINED WITH PUMP SYSTEM VENDOR PRIOR TO CONSTRUCTION.
9. PROVIDE PVC-COATED RMC STEEL CONDUITS BETWEEN ENCLOSURE AND VENDOR SUPPLIED CONTROL PANEL. SIZE AND QUANTITY AS REQUIRED BY NEC. PROVIDE ALL FIELD WIRING REQUIRED FOR A COMPLETE AND FUNCTIONAL SYSTEM.