

SHOAL CREEK 2ND ADDITION

WICHITA, SEDGWICK COUNTY, KANSAS

State of Kansas) SS We, Baughman Company, P.A., Surveyors in
Sedgwick County) atforesaid county and state do hereby certify that we have surveyed and
platted "SHOAL CREEK 2ND ADDITION", Wichita, Sedgwick County, Kansas
and that the accompanying plat is a true and correct exhibit of the
property surveyed, described as and being a replat of all of Lots 1, 2,
3, 4, 5, 6, 7, 8, 9, 10, 11, 12, 13, 14, 15, 16, 17, 18, 19, 20, 21, 22,
23, 24, 25, 26, 27, 28, 29, 30, 31, 32, 33, 34, and 35, Block A, Shoal
Creek Addition, Wichita, Sedgwick County, Kansas, together with all of
Lots 1, 2, 3, 4, 5, 6, 7, 8, 9, 10, 11, 12, 13, 14, 15, 16, and 17, Block B,
in said Shoal Creek Addition, together with all of Reserves "C" and "D"
as platted in said Shoal Creek Addition, and together with all of
Hawthorne St., Turnberry, and Whitewood St. as dedicated in said Shoal
Creek Addition.

All being situated in the NE1/4 of Sec. 23, Twp. 27-S,
R-2-E of the 6th P.M., Sedgwick County, Kansas.

Existing public easements and dedications
being vacated by virtue of K.S.A. 12-512(b).

Baughman Company, P.A.

_____, Surveyor
Michael G. Conrey

Know all men by these presents that we,
the undersigned, have caused the land in the surveyors certificate to be
platted into Lots, Blocks, Streets, and a Reserve to be known as "SHOAL
CREEK 2ND ADDITION", Wichita, Sedgwick County, Kansas. The utility
easements are hereby granted as indicated for the construction and
maintenance of all public utilities. The drainage and utility easements
are hereby granted as indicated for drainage purposes and for the
construction and maintenance of all public utilities. The wall easement
is hereby granted as indicated for the construction and maintenance of a
private screening wall and utility main lines and service lines shall be
allowed to cross this easement. The street, drainage, and utility easements
are hereby granted as indicated for street related purposes, for drainage
purposes, and for the construction and maintenance of all public utilities.
The streets are hereby dedicated to and for the use of the public.
Reserve "A" is hereby reserved for entry monuments, landscaping, streets,
open space, and utilities. Reserve "A" shall be owned and maintained
by the homeowners association for the addition. All abutters rights of
access to or from 143rd Street East over and across the east line of
Lots 4, 5, 6, and 7, Block A, are hereby granted to the City of Wichita,
Kansas.

Scott Land, L.L.C.

_____, Member
Jay W. Russell

State of Kansas) SS The foregoing instrument acknowledged before
Sedgwick County) me, this _____ day of _____, 2003, by Jay W. Russell, Member
of Scott Land, L.L.C., on behalf of the limited liability company.

_____, Notary Public
My App't. Exp. _____

We, the undersigned holders of a mortgage on the
above described property, do hereby consent to this plat of "SHOAL
CREEK 2ND ADDITION", Wichita, Sedgwick County, Kansas.

Kanza Bank

State of Kansas) SS The foregoing instrument acknowledged be-
Sedgwick County) fore me, this _____ day of _____, 2003, by _____,
_____ of Kanza Bank, on behalf of the bank.

_____, Notary Public
My App't. Exp. _____

This plat of "SHOAL CREEK 2ND ADDITION",
Wichita, Sedgwick County, Kansas has been submitted to and approved
by the Wichita-Sedgwick County Metropolitan Area Planning Commission,
Wichita, Kansas.
Dated this _____ day of _____, 2003.
Wichita-Sedgwick County Metropolitan Area Planning Commission

_____, Chair
Bernard A. Hentzen

_____, Secretary
John L. Schlegel

This plat approved and all dedications
shown hereon accepted by the City Council of the City of Wichita,
Kansas, this _____ day of _____, 2003.

_____, Mayor
Carlos Mayans

_____, City Clerk
Pat Graves

Reviewed in accordance with K.S.A. 58-2005
on this _____ day of _____, 2003.

Tricia L. Robello, L.S. #1246
Deputy County Surveyor
Sedgwick County, Kansas

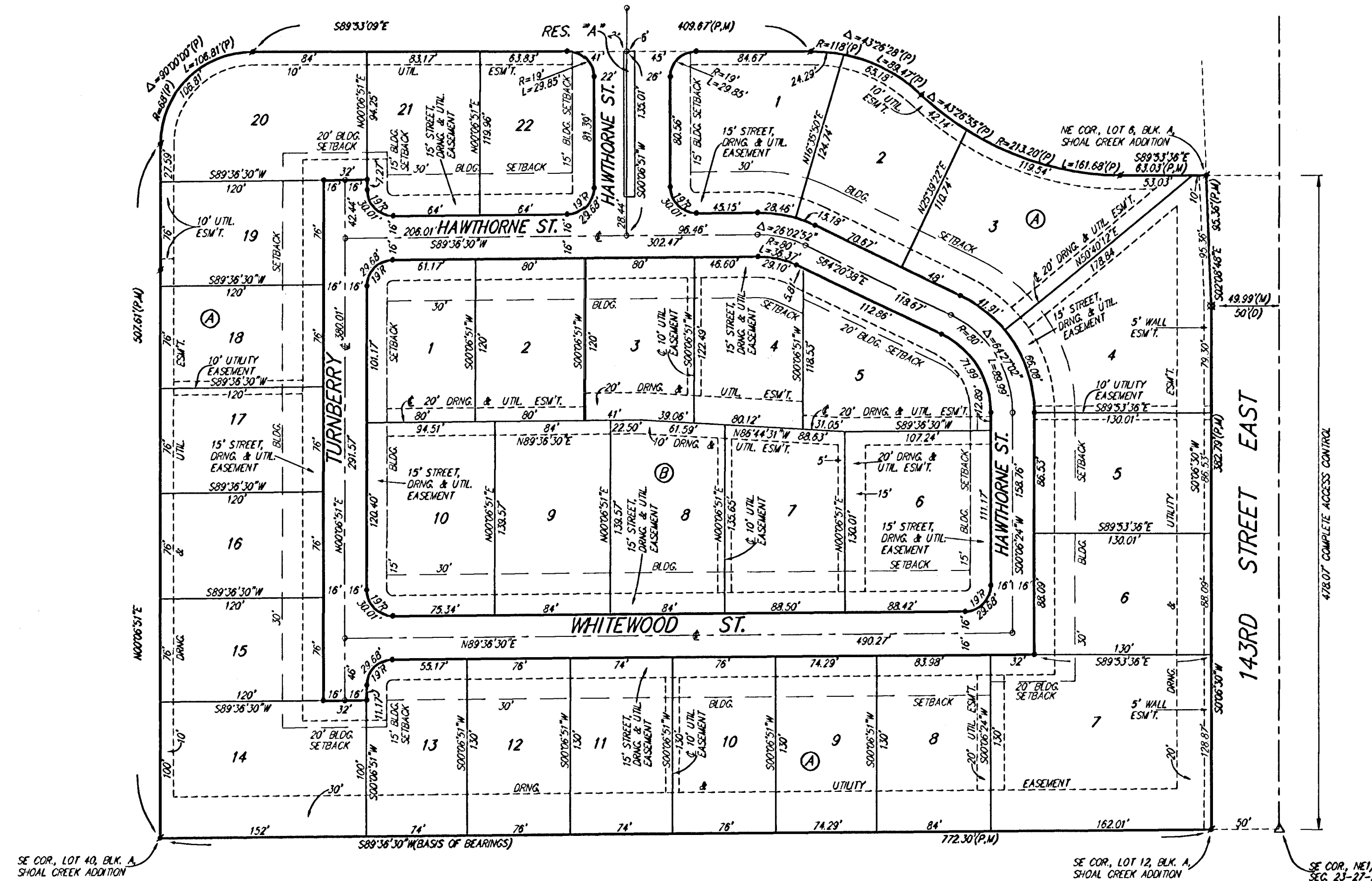
Entered on transfer record this _____ day
of _____, 2003.

_____, County Clerk
Don Brace

State of Kansas) SS This is to certify that this plat has been
Sedgwick County) filed for record in the office of the Register of Deeds, this _____ day
of _____, 2003 at _____ o'clock _____ M., and is duly recorded.

_____, Register of Deeds
Bill Meek

_____, Deputy
Linda Kizzire



BAUGHMAN COMPANY P. A.
ENGINEERING, SURVEYING, & PLANNING
318-282-7211 318-282-7211 WICHITA, KANSAS 67211
2 VENTNOR CREEK AND ADJACENT SHOALS CREEK