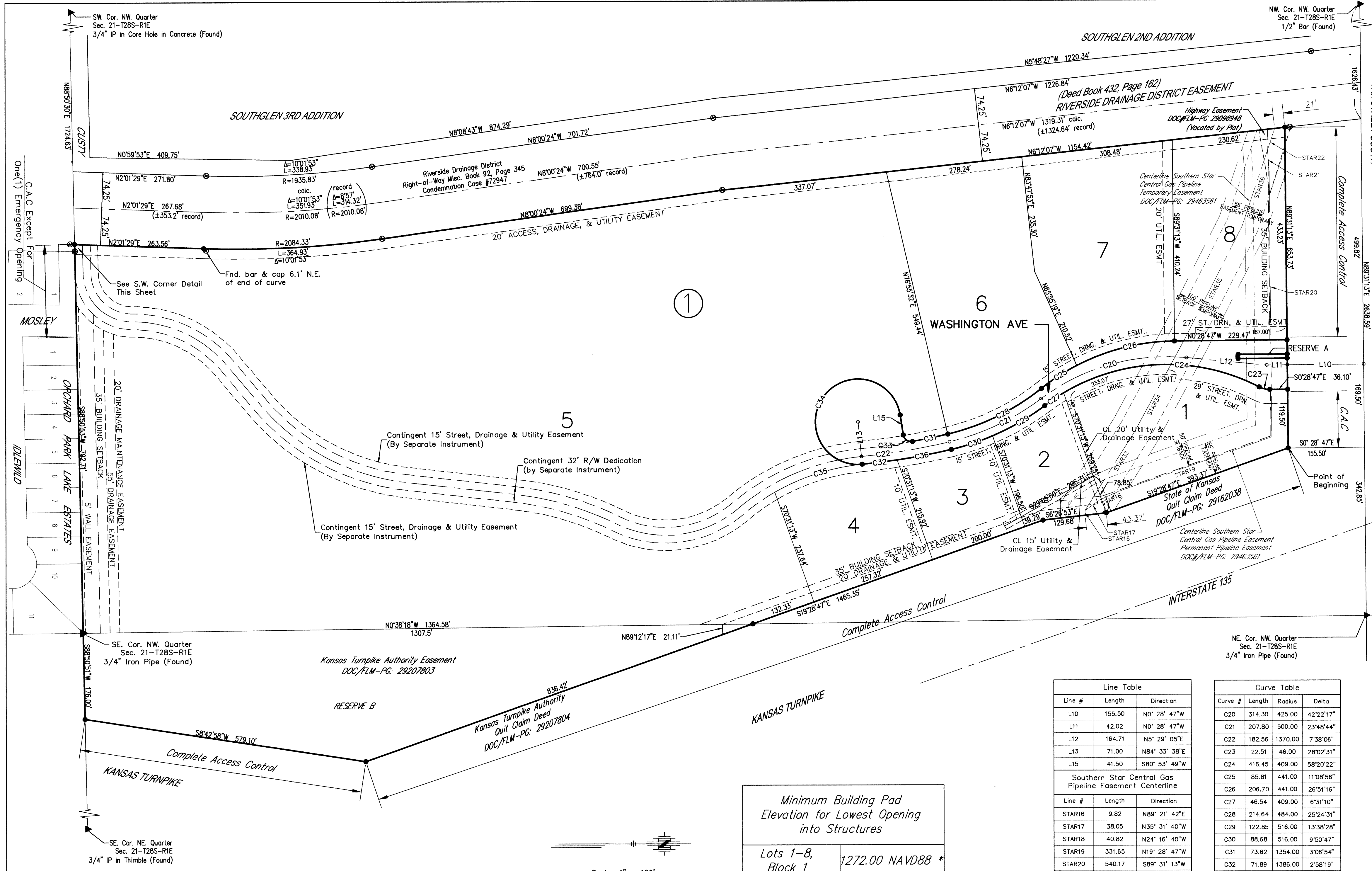


PC 247-4A

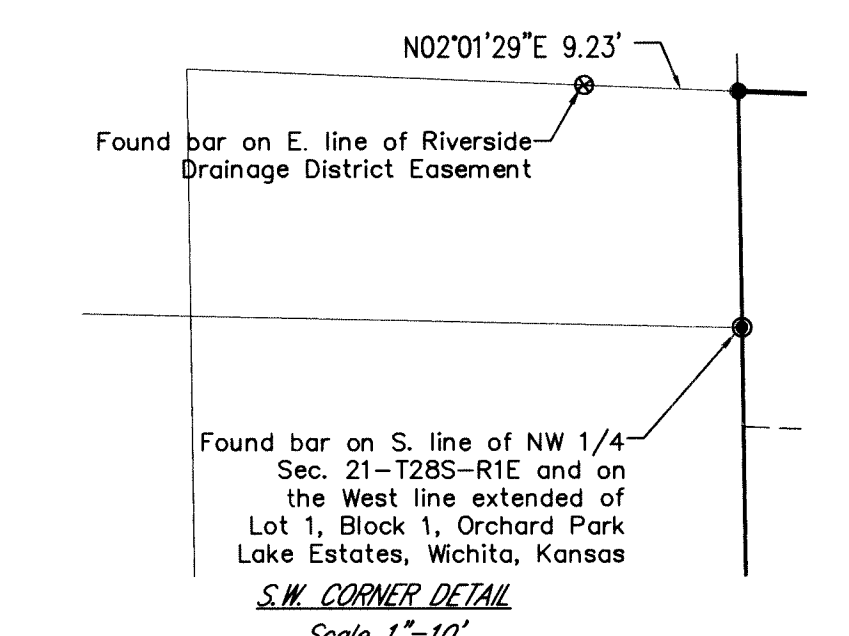


**LEGEND**

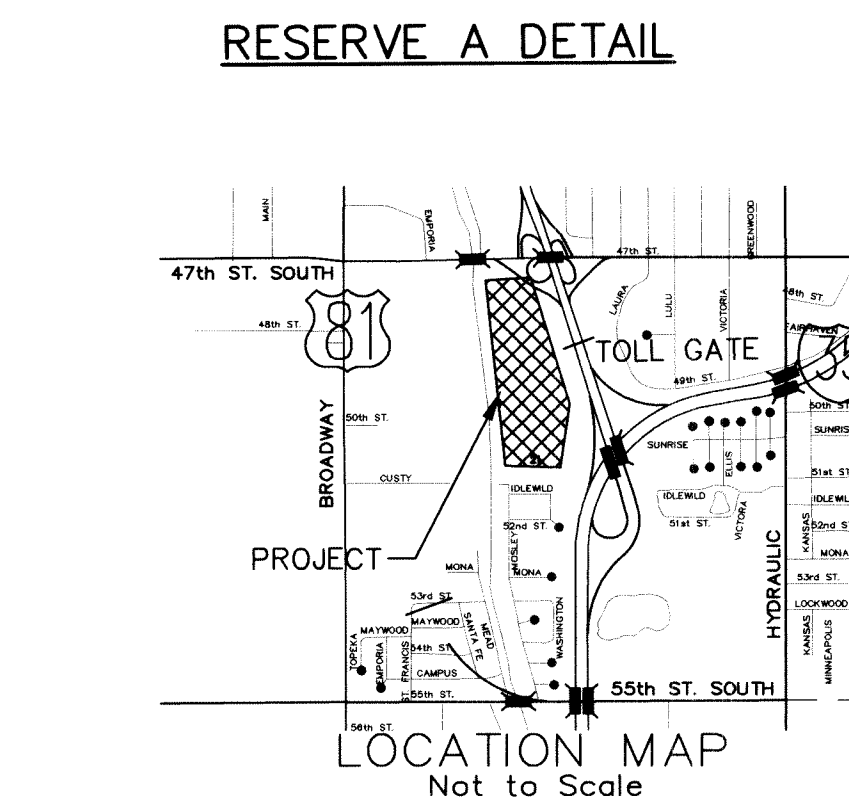
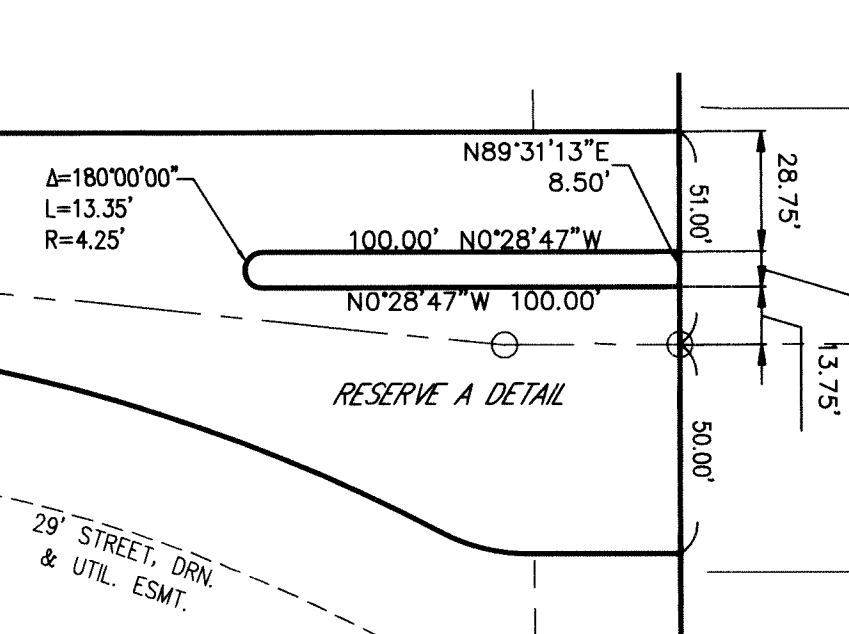
- 1 1/2" Pipe Found
- ⊗ Mooring Bar & Cap Found
- ▶ Section Corner Found
- 5/8" Bar w/ Pole Cap Set

Bench Mark  
City of Wichita bench mark disk, 20.7' E. of E. Broadway curb and 41.5' S. of centerline Custy. Elevation 1274.71 NAVD88 (Elevation 86.82 city datum)

Bench Mark  
Plus cut on Southwest corner 47th St. bridge over Riverside drainage channel at end of wingwall. Elevation 1273.28



**NOTES:**  
1. This plot is subject to the Provisions of Southfork Commercial Addition Community Unit Plan, DP-249 on file with the Metropolitan Area Planning Dept.  
2. This plot is subject to a drainage plan on file with City Public Works.



Line Table			Curve Table			
Line #	Length	Direction	Curve #	Length	Radius	Delta
L10	155.50	N0° 28' 47" W	C20	314.30	425.00	42° 22' 17"
L11	42.02	N0° 28' 47" W	C21	207.80	500.00	23° 48' 44"
L12	164.71	N5° 29' 05" E	C22	182.56	1370.00	7° 38' 06"
L13	71.00	N84° 33' 38" E	C23	22.51	46.00	28° 02' 31"
L15	41.50	S80° 53' 49" W	C24	416.45	409.00	58° 20' 22"
Southern Star Central Gas Pipeline Easement Centerline			C25	85.81	441.00	11° 08' 56"
STAR16	9.82	N89° 21' 42" E	C26	206.70	441.00	26° 51' 16"
STAR17	38.05	N35° 31' 40" W	C27	46.54	409.00	6° 31' 10"
STAR18	40.82	N24° 16' 40" W	C28	214.64	484.00	25° 24' 31"
STAR19	331.65	N19° 28' 47" W	C29	122.85	516.00	1° 33' 28"
STAR20	540.17	S89° 31' 13" W	C30	88.68	516.00	9° 50' 47"
STAR21	44.48	S85° 48' 58" W	C31	73.62	1354.00	3° 06' 54"
STAR22	46.04	N71° 30' 09" W	C32	71.89	1386.00	2° 58' 19"
STAR33	191.96	S57° 43' 00" E	C33	25.37	16.00	90° 51' 23"
STAR34	209.05	S61° 31' 34" E	C34	404.42	87.00	266° 20' 12"
STAR35	261.50	S62° 55' 58" E	C35	188.67	444.00	24° 20' 48"
STAR36	209.60	S71° 30' 09" E	C36	112.80	1386.00	4° 39' 47"

Minimum Building Pad Elevation for Lowest Opening into Structures  
Lots 1-8, Block 1 1272.00 NAVD88 \*  
\* Or as approved by the City Stormwater Engineer

# SOUTHFORK COMMERCIAL ADDITION

TO WICHITA, SEDGWICK COUNTY, KANSAS

Date of Preparation: 8/18/2014  
F:\APPS\DOCA\PI\858\Plot\_Southfork\One\_Step\_Final\_Plot-3211.dwg

**POE & ASSOCIATES, INC.**  
CONSULTING ENGINEERS  
5940 E. Central, Suite 200 • Wichita, KS 67208-4242  
Phone 316/685-4114 • FAX 316/685-4444

TRA	CHK
JSB	DWN
SRS	DSN
0	05-24-18
FOR OWNER REVIEW	DESCRIPTION
REV	DATE
0	05-24-18
TIMOTHY R. AUSTIN ENGINEER KS # 11496	
KAW VALLEY ENGINEERING KAW VALLEY ENGINEERING, INC. IS AUTHORIZED TO OFFER ENGINEERING SERVICES BY KANSAS STATE CERTIFICATE OF AUTHORIZATION # E-113. EXPIRES 12/31/18	
Southfork Lot 5 LOT 5, BLOCK 1 WICHITA, KS	
EROSION CONTROL DETAILS	
PROJ. NO.	G14-0024-8
DESIGNER	SRS
DRAWN BY	JSB
CFN	0024-8BDET
SHEET	REV
09	0

THIS DRAWING SHALL NOT BE UTILIZED BY ANY PERSON, FIRM, OR CORPORATION IN WHOLE OR IN PART WITHOUT THE SPECIFIC PERMISSION OF KAW VALLEY ENGINEERING, INC.