

**BENCHMARKS:**  
 BM #1: "□" Cut in top of curb on north side of Athenian, near the SE corner of Lot 13, Block 1, Valencia Addition.  
 Elev. = 1332.11 NAVD88

BM #2: Cross cut in sidewalk on north side of Harborlight St., near Lot 23, Block 1, Harbor Isle 2nd Addition.  
 Elev. = 1330.40 NAVD88

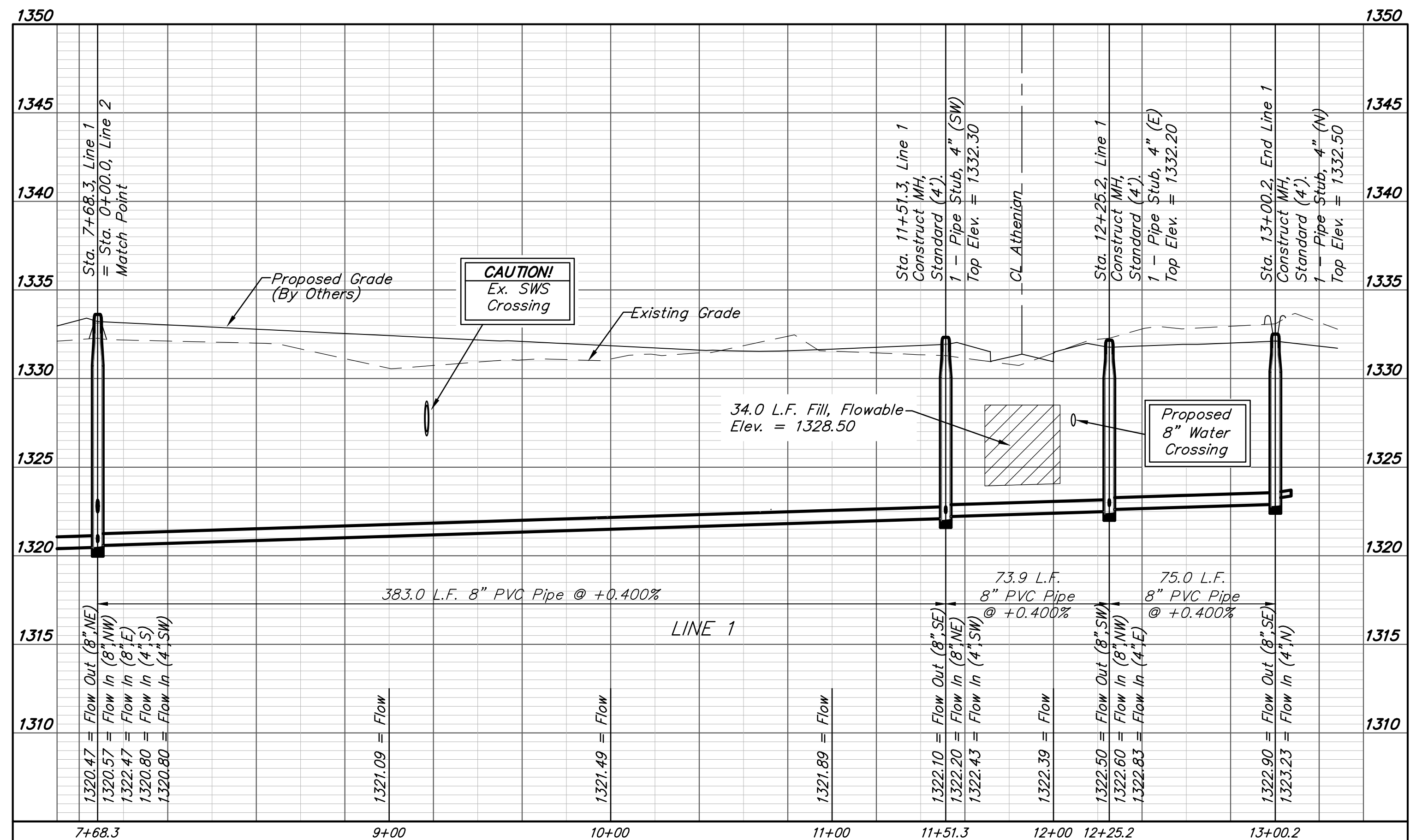
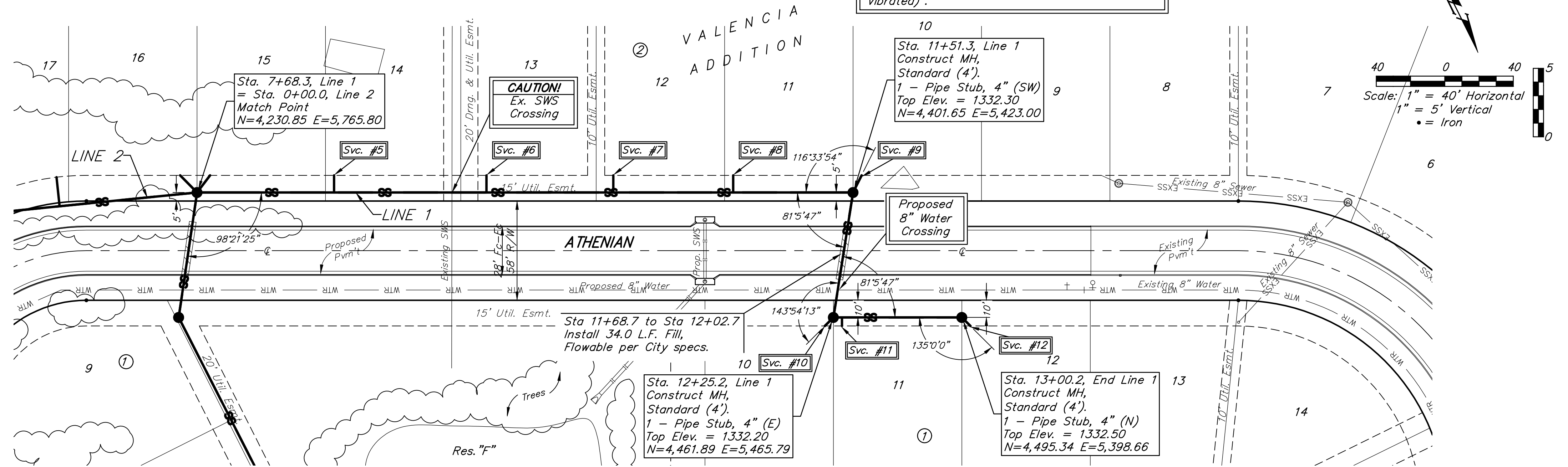
Trees to be removed by the Contractor only as necessary for sewer construction and with approval of the Engineer. Cost of tree removal to be included in bid item "Site Clearing"

All trench and manhole excavation areas from Sta. 7+68.3 to Sta. 11+51.3 and Sta. 12+25.2 to Sta. 13+00.2, Line 1 shall be backfilled with sand. The sand backfill shall be within two feet of existing grade and shall be water-jetted and vibrated during backfilling. All costs shall be paid for as L.F. "Fill, Sand (Flushed & Vibrated)".

**SEWER SERVICE TABLE**

NUMBER	TYPE	LOCATION				FOR INFORMATION ONLY	
		LOT NO.	BLOCK NO.	LINE NO.	STATION \ DIRECTION	APPROXIMATE LENGTH 4" PIPE	
5	8" X 4" Tee W/Riser	14	2	1	8+48.3/Lt.	8.0'	10.0'
6	8" X 4" Tee W/Riser	13	2	1	9+37.3/Lt.	7.0'	10.0'
7	8" X 4" Tee W/Riser	12	2	1	10+11.3/Lt.	6.5'	10.0'
8	8" X 4" Tee W/Riser	11	2	1	10+81.3/Lt.	6.0'	10.0'
9	4" Stub	10	2	1	11+51.3/Lt.	6.0'	11.2'
10	4" Stub	10	1	1	12+25.2/Rt.	5.5'	7.0'
11	8" X 4" Tee W/Riser	11	1	1	12+30.2/Rt.	5.5'	5.0'
12	4" Stub	12	1	1	13+00.2/Rt.	5.0'	7.0'

NOTE: Vertical Riser Pipe shall be extended to 2' minimum above ground water elevation and 4' maximum below proposed ground elevation.



21190  
 1-21-19  
 JAMES WOOTEN  
 LICENSED PROFESSIONAL ENGINEER  
 KANSAS