

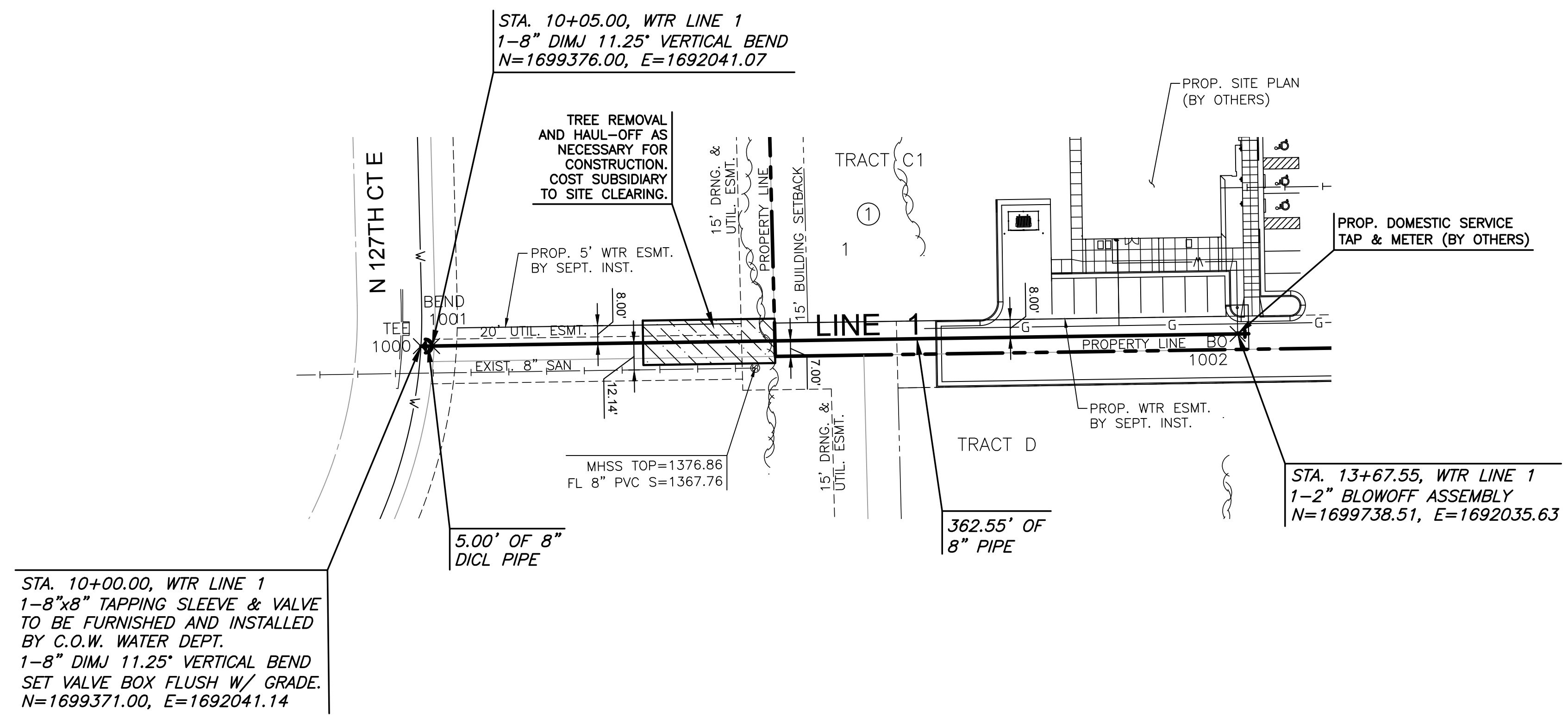
PLOTTED: Wednesday, January 30, 2019 @ 10:23AM

J:\PROJECTS\2018\1801010674_GNL_ARK VALLEY ORTHOPEDIC_18674CAD\SHOTS\05_CIVIL\WTR1\8674 WTR 01.DWG

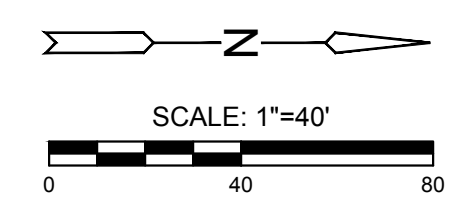


WATER DISTRIBUTION PLANS FOR
ARK VALLEY ORTHOTICS & PROSTHETICS
 WICHITA, KANSAS

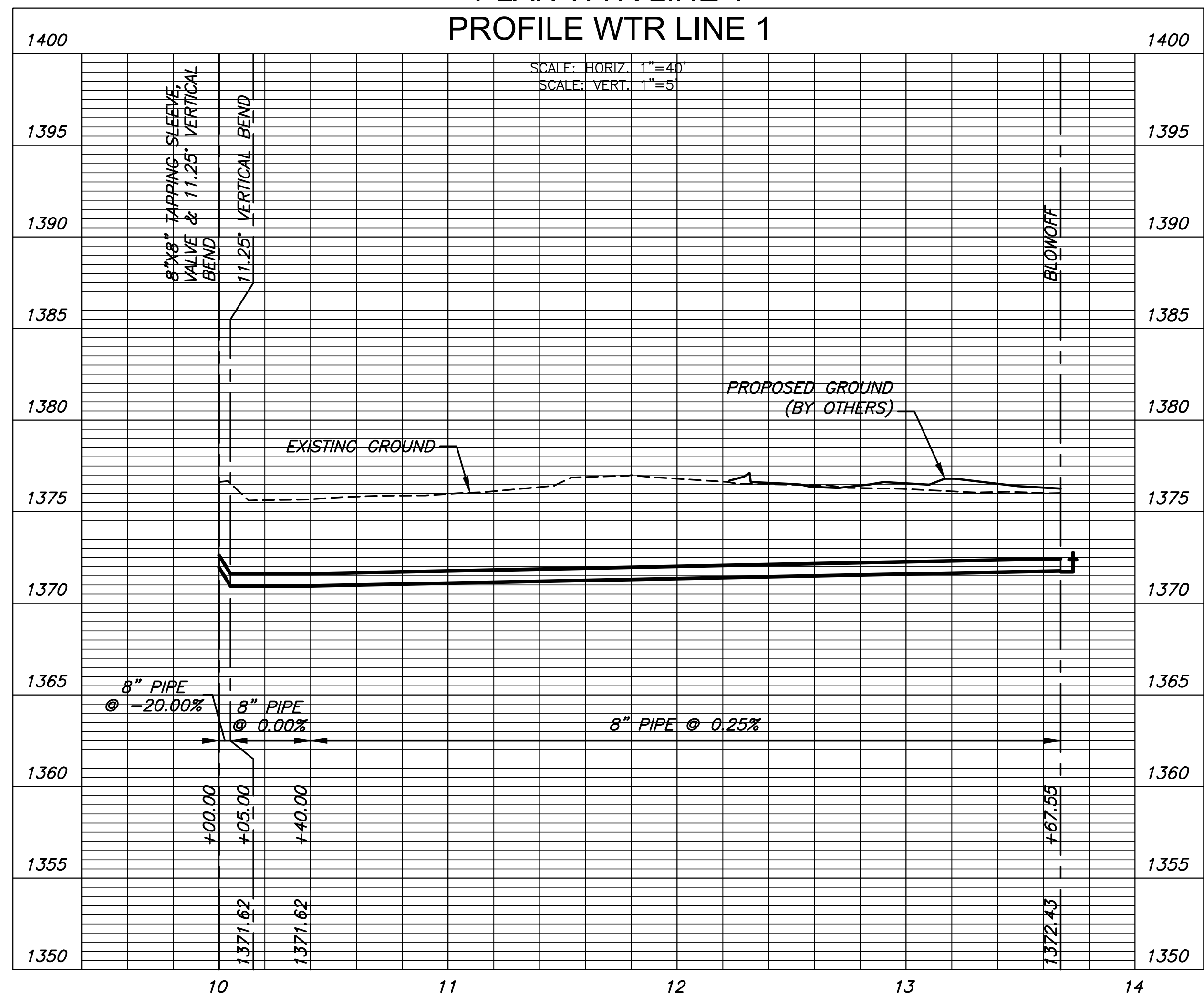
WATER POINTS			
Point #	Northing	Easting	Desc.
1000	1699371.00	1692041.14	TEE
1001	1699376.00	1692041.07	BEND
1002	1699738.51	1692035.63	BO



NOTE:
 CONTRACTOR TO VERIFY LOCATION
 AND ELEVATION OF EXISTING WATER
 LINE PRIOR TO CONSTRUCTION.



PLAN WTR LINE 1
PROFILE WTR LINE 1



©2019
 MKEC Engineering
 All Rights Reserved
 www.mkec.com
 These drawings and their contents,
 including, but not limited to, all concepts,
 designs, & ideas are the exclusive
 property of MKEC Engineering (MKEC),
 and may not be used or reproduced in any
 way without the express consent of MKEC.

WATER LINE 1

PROJECT NO.	448-90947	
DATE	JAN. 2019	
SCALE	1"=40'	
DESIGNED	DRAWN	CHECKED
SPE	MKB	SPE



NO.	REVISION	DATE

SHEET NO.
04 OF 09