

FOR INFORMATION ONLY

Earthwork Summary:

Pond/Overflow Channel Excavation = 32,015 C.Y.

R/W & Lot Grading:

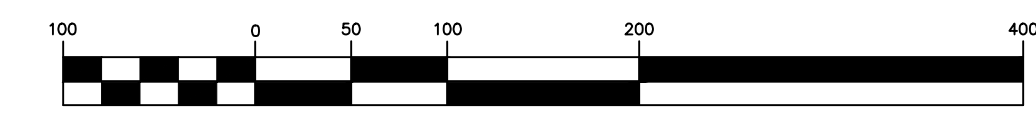
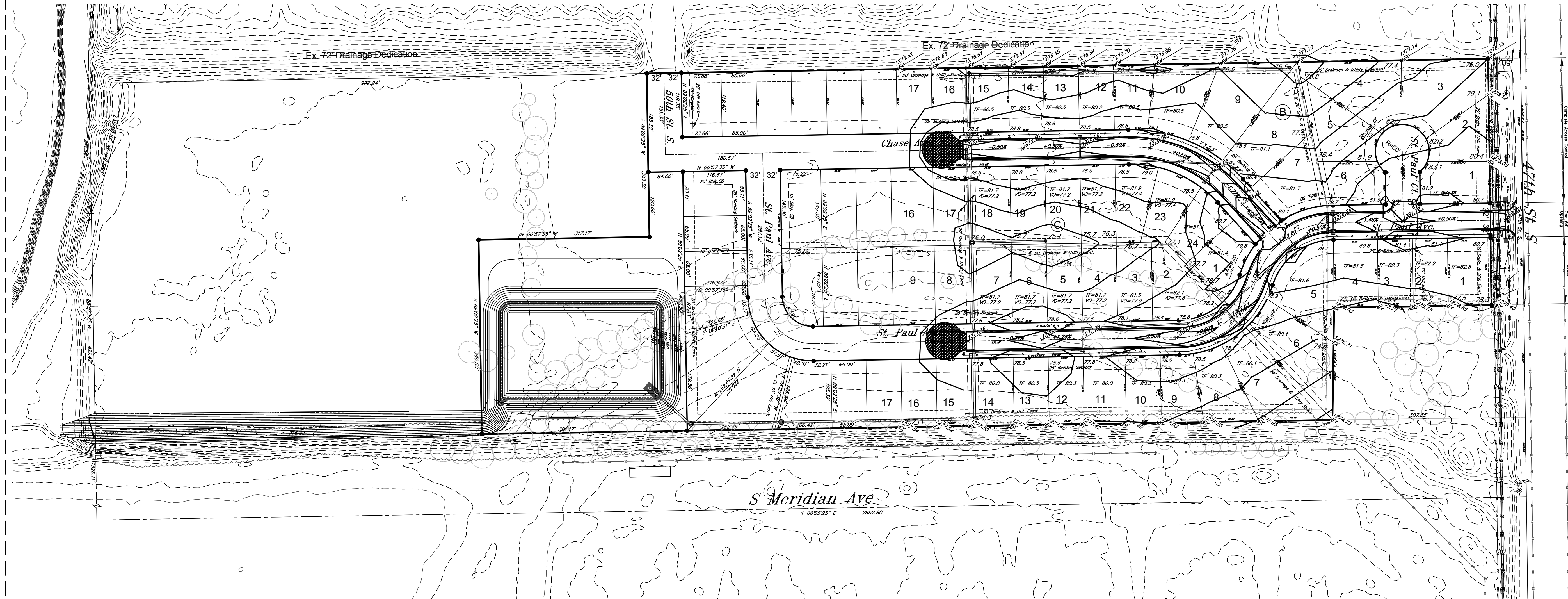
Fill = 31,819 C.Y.

Excavation = 1,163 C.Y.

Total:

Waste = 1,359 C.Y.

Note: No cut/fill shrink/swell factor was used in determining calculations.



HORIZONTAL SCALE
(IN FEET)
1 inch = 100 ft.

Fox Run Addition Mass Grading Plan Wichita, Kansas			
PROJECT NUMBER 468-85360			
 KEMILLER ENGINEERING PA <small>117 E. Lewis, Wichita, KS 67202 (316)264-0242</small>	KEM NO. 17063	FILE	DATE 12/2018
	DESIGN KM	DRAWN SS	REVISED
			SHEET 4.0