

GENERAL NOTES:

- The Contractor shall comply with all applicable safety regulations. All construction shall be completed following current City Standard Specifications and Special Provisions.
- Contractor will be required to provide notice to utility companies a minimum of seventy-two (72) hours prior to any excavation, as follows:
Kansas One-Call 687-2470
The Contractor must notify the following in case of an emergency:
AT&T 1-800-246-8464
Black Hills Energy 1-800-694-8989
City of Wichita Water & Sewer 1-316-219-8921
City of Wichita Stormwater 1-316-268-4090
City of Wichita Traffic 1-316-268-4034
Cox Communications 1-888-249-3530
Kansas Gas Service 1-888-482-4950
Westar Energy 1-800-544-4857
- Utility service lines, poles, etc. are to be adjusted as necessary by others prior to construction unless the plans specifically call for their adjustment by the Contractor or unless the plans specifically identify a utility to be adjusted by its owner during construction. Existing utilities and their location, as shown on the plans, represent the best information obtainable for design. The Contractor will be required to work around existing utilities within the right-of-way which do not conflict with proposed construction.
- Rubble from the removal of miscellaneous structures and excess excavation which is to be wasted shall be disposed of on sites to be provided by the Contractor. These sites shall be approved by the Engineer as to suitability, appearance and site location. Locations, in the opinion of the Engineer, that will leave an unsightly appearance will not be approved. All disposal sites must be approved by the Kansas Department of Health and Environment. Material either stockpiled or disposed of in a flood plain will require a Kansas State Board of Agriculture permit. Any material dumped in waters of the United States or wetlands is subject to U.S. Corps of Engineers permitting regulations. Any material buried or stockpiled beyond approved construction limits will require additional archaeological investigations unless buried in a previously approved borrow location.
- Trees and shrubs in public right-of-way which are in direct conflict with proposed new construction shall be removed by the Contractor with the City Engineer's approval. Trees and shrubs which are not in direct conflict with proposed new construction shall be saved and protected from damage.
- The Contractor shall give all property owners and/or tenants of developed property abutting the construction of this project a minimum of ten (10) days notice prior to start of construction.
- The Contractor shall be responsible for preserving property irons. The Contractor will be required to re-establish any property irons which are damaged or destroyed by his construction operations. Such irons shall be re-established by a licensed land surveyor in accordance with state laws.
- The Engineering Division shall field locate water valve one time during construction when requested by the Contractor. It shall be the Contractor's responsibility to preserve such field locations during the construction process. Water valves, valve boxes or fire hydrants damaged during construction shall be repaired by Contractor at his own expense. Valve boxes and water meters within the project limits shall be adjusted to match field grades by the contractor.
- The Contractor shall notify the consultant engineer and Tom Mason at 316-268-4574 with the City of Wichita with the anticipated construction start date and notify them of project completion. Staking and inspection for this project will be the responsibility of the Contractor.
- If traffic will be impacted by construction, a traffic control plan must be submitted and approved by the City Traffic Engineer, Brian Coon at traffic@wichita.gov before construction can begin. The Contractor shall be responsible for all traffic control measures to facilitate construction. All construction zone markings and signage shall conform to the latest version of Manual on Uniform Traffic Control Devices (MUTCD) as published by the US Dept. of Transportation, Federal Highway Administration. All costs associated with construction markings and signage shall be the Contractors responsibility.
- All elevations shown are NAVD 88.
- All areas disturbed during construction that will not be under proposed pavement shall be restored to match existing conditions.

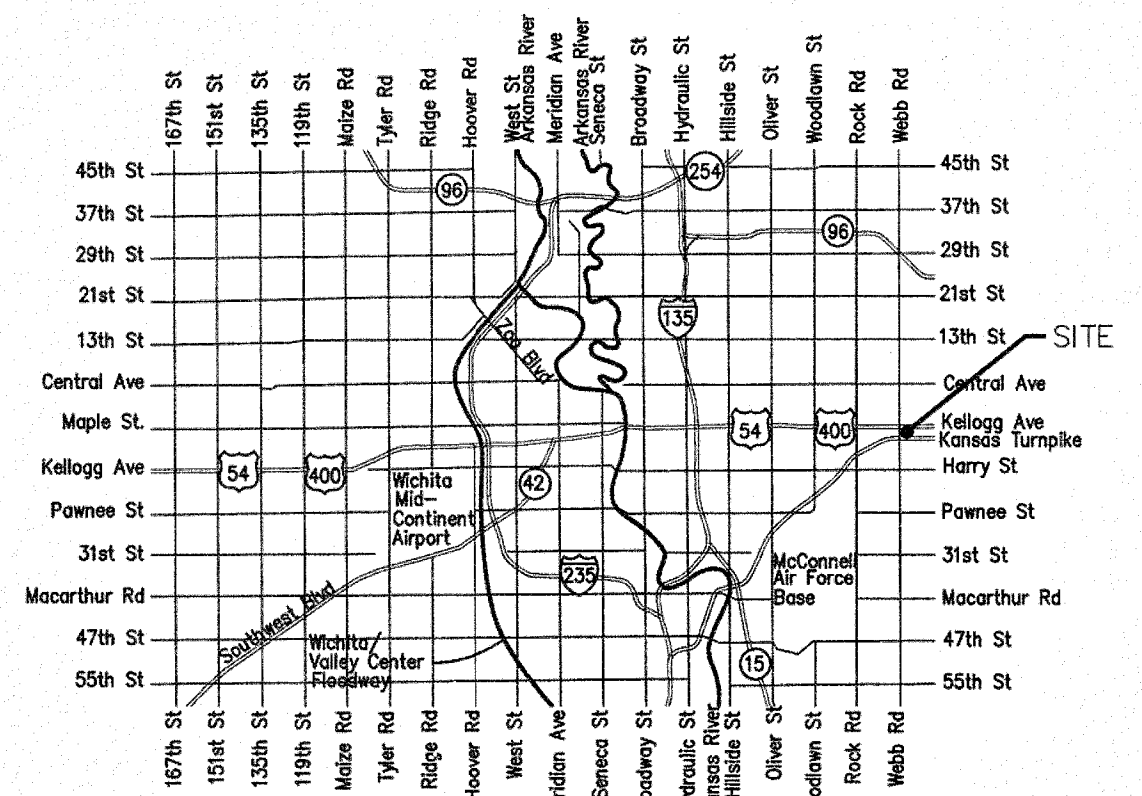
- Any sidewalk, drive approach, curb, or street pavement removed to construct project must have a pavement cut permit and be replaced by the City contractor. Permits can be obtained by calling 316-268-4501 or 316-268-4480.
- All applicable fees (tap, equity, in lieu of & main benefit) must be paid before any connections can be made on this project. Quotes can be obtained on fees by calling 316-268-4535.
- City Maintenance of sanitary sewer mains ends at last structure within easement or right-of-way line.
- All stubs and capped pipes shall be located with green plastic tape in the same manner as risers.
- Contractor shall limit the extent of trench open overnight and weekends to less than 50 feet.
- Contractor shall provide positive drainage away from all manhole covers.
- The Contractor shall prevent any construction debris from entering the existing sanitary sewer during construction.
- The Contractor shall be responsible for maintaining continuous flow of sewage through construction. Contractors proposed method for maintaining sewage flow shall be submitted and approved by the Sewer Maintenance Division (316-268-4073) prior to starting and by-passing of sewage flows.
- Any over excavation from manhole and pipe removal shall be backfilled with AB-3 compacted to 90-95% ASTM D698.
- The Contractor shall protect from damage and support existing utilities through construction as approved by the utility owner and the Engineer at the contractor's expense.
- Contractor shall grade around exposed manholes at a 1:1 slope. Manholes set lower than existing grade shall have a 9" berm constructed around manhole to prevent infiltration into sanitary sewer system. Cost of dirt, labor, equipment, etc. to be incidental to cost of manhole. Easements shall be graded with the street improvement project as part of the mass grading plan.
- All areas disturbed during construction shall be seeded at 300 lbs./acre with Rye Grass immediately following construction in that area. Contractor shall prepare ground per City Specifications.
- All existing and proposed erosion control measures including silt fencing, erosion control mat, straw bales, inlet barriers, and const. entrance shall be maintained throughout construction by the contractor and until project is accepted by the City of Wichita. The on-site engineer shall complete weekly reports on the status of erosion control measures. The contractor shall be required to comply with maintenance and/or replacement of erosion control measures as determined by the on-site engineer until project is accepted by City of Wichita. Maintenance and/or replacement of erosion control measures to be paid by L.S. bid item "Maintain Existing BMPs".
- The Contractor shall not begin work on the project until the Project Inspector is assigned and on site. Any work completed without inspection will be required to be uncovered for inspection at the Contractor's expense.

SANITARY SEWER IMPROVEMENTS to serve WILDCAT-KELLOGG ADDITION

9901 E. KELLOGG DR.
CITY OF WICHITA, KANSAS

Gary Janzen, P.E. City Engineer
Project Number
2351 PPS (184011)

T. Mason - City of Wichita, Inspector
Stubs & Risers
Release Date: 2/28/2019
pdf: 3/1/2019 apr

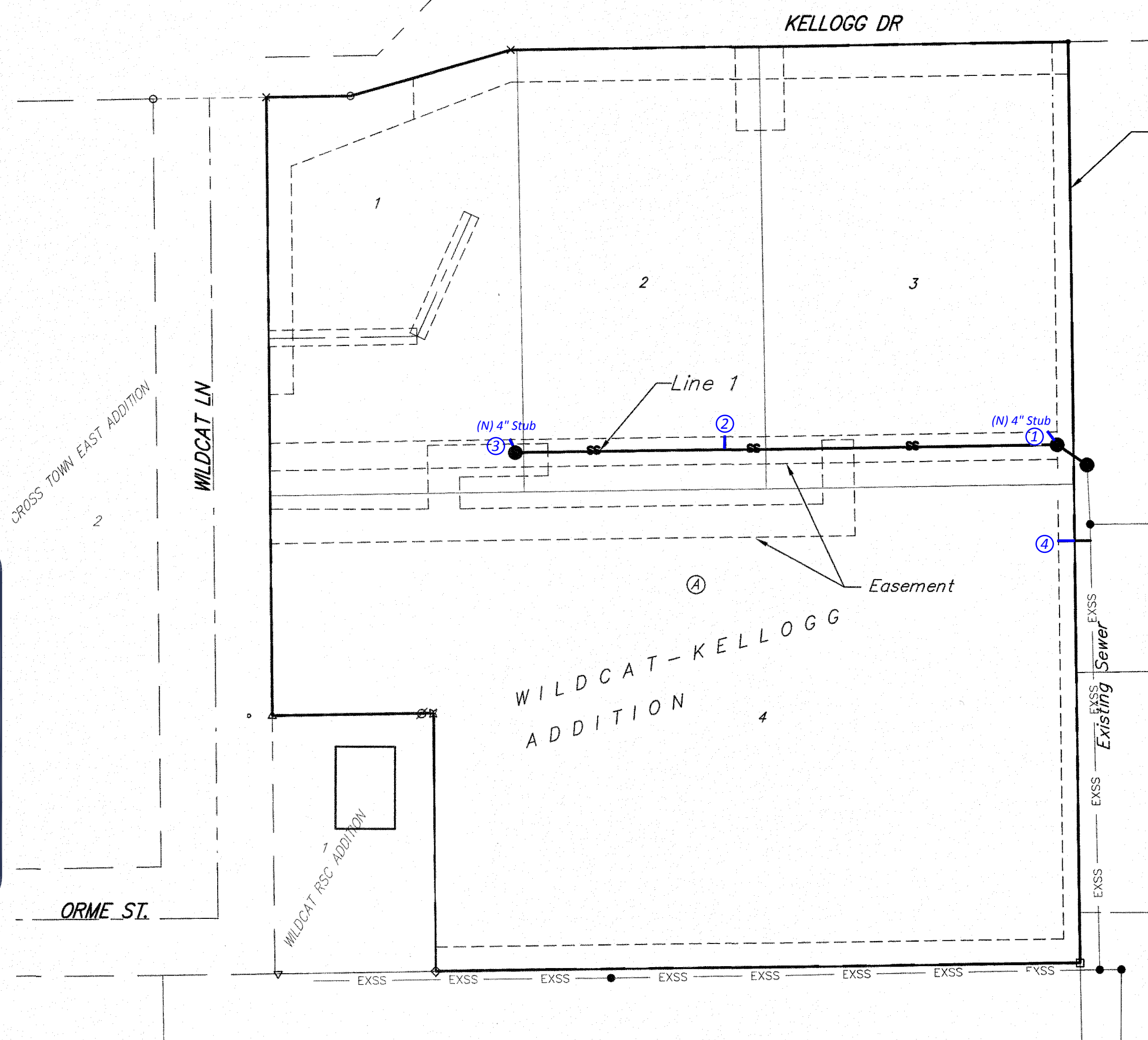
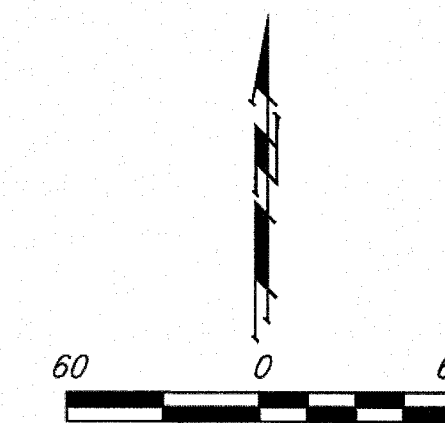


Vicinity Map

Benchmarks

BENCHMARK:
CHISELED SQUARE, TOP OF CURB
14.5' WEST OF THE MOST WESTERLY
SW COR., LOT 4, BLOCK A, (NOTED
ON PLAT AS SW COR., LOT 2, PAUL
BURNETT 2ND ADD).
ELEVATION = 1370.56 NAVD88

EAST US-54/400 HIGHWAY (KELLOGG)



Sheet Index

Title Sheet	1
Line 1	2
Erosion Control/Grading Plan	3
Copy of Plat	4

SS Details SS-101, SS-102, SS-103 and
Erosion Control Details available at City
of Wichita web site at
[http://www.wichita.gov/PWU/
StandardsConstruction/Forms/
WebPageStandardsConstruction.aspx](http://www.wichita.gov/PWU/StandardsConstruction/Forms/WebPageStandardsConstruction.aspx)

AS BUILTS

Contractor: Pearson Construction
Inspector: Matt Perez
Date: 1-21-19

KEMILLER
ENGINEERING PA

117 E. Lewis,
Wichita, KS 67202 (316)264-0242

APPROVED AS NOTED
BY WICHITA PUBLIC WORKS
ENGINEERING DIVISION

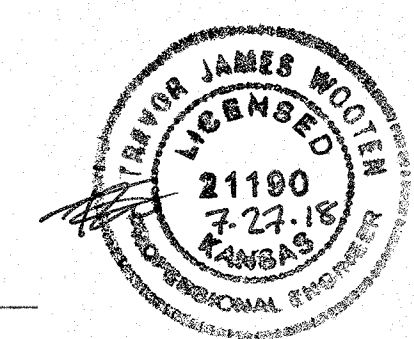
Engineering *Julianne Kallman* 7-27-18

Utilities *[Signature]* 7-27-18

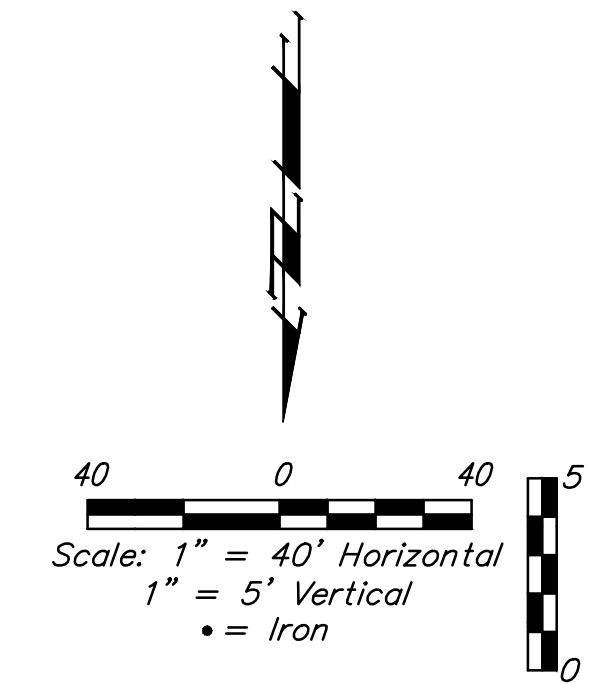
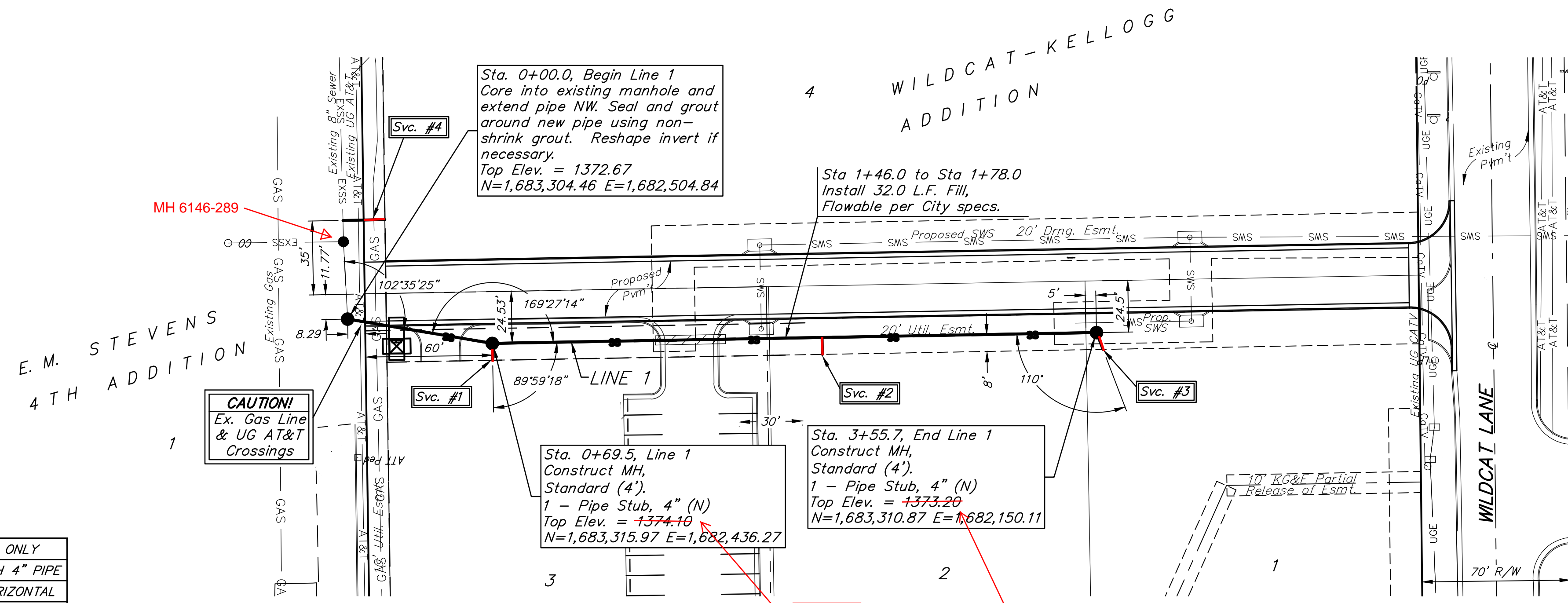
NOTE TO CONTRACTORS

Inspection and testing for this project is to be provided by a Licensed Consulting Engineering Firm under contract with the Owner/Developer. Said inspection to be in accordance with the City of Wichita standard construction engineering practices and certified by a Licensed Professional Engineer in the state of Kansas. No work shall be performed by the Contractor without such inspection nor shall any work be commenced without written authorization by City Engineering. All Construction and Materials shall comply with the current City of Wichita Specifications and Standards and Special Provisions (on file and available at [Wichita.gov](http://www.wichita.gov)).

An approved copy of these plans signed by City staff are required on-site.



BENCHMARK:
 CHISELED SQUARE, TOP OF CURB
 14.5' WEST OF THE MOST WESTERLY
 SW COR., LOT 4, BLOCK A, (NOTED
 ON PLAT AS SW COR., LOT 2, PAUL
 BURNETT 2ND ADD).
 ELEVATION = 1370.56 NAVD88



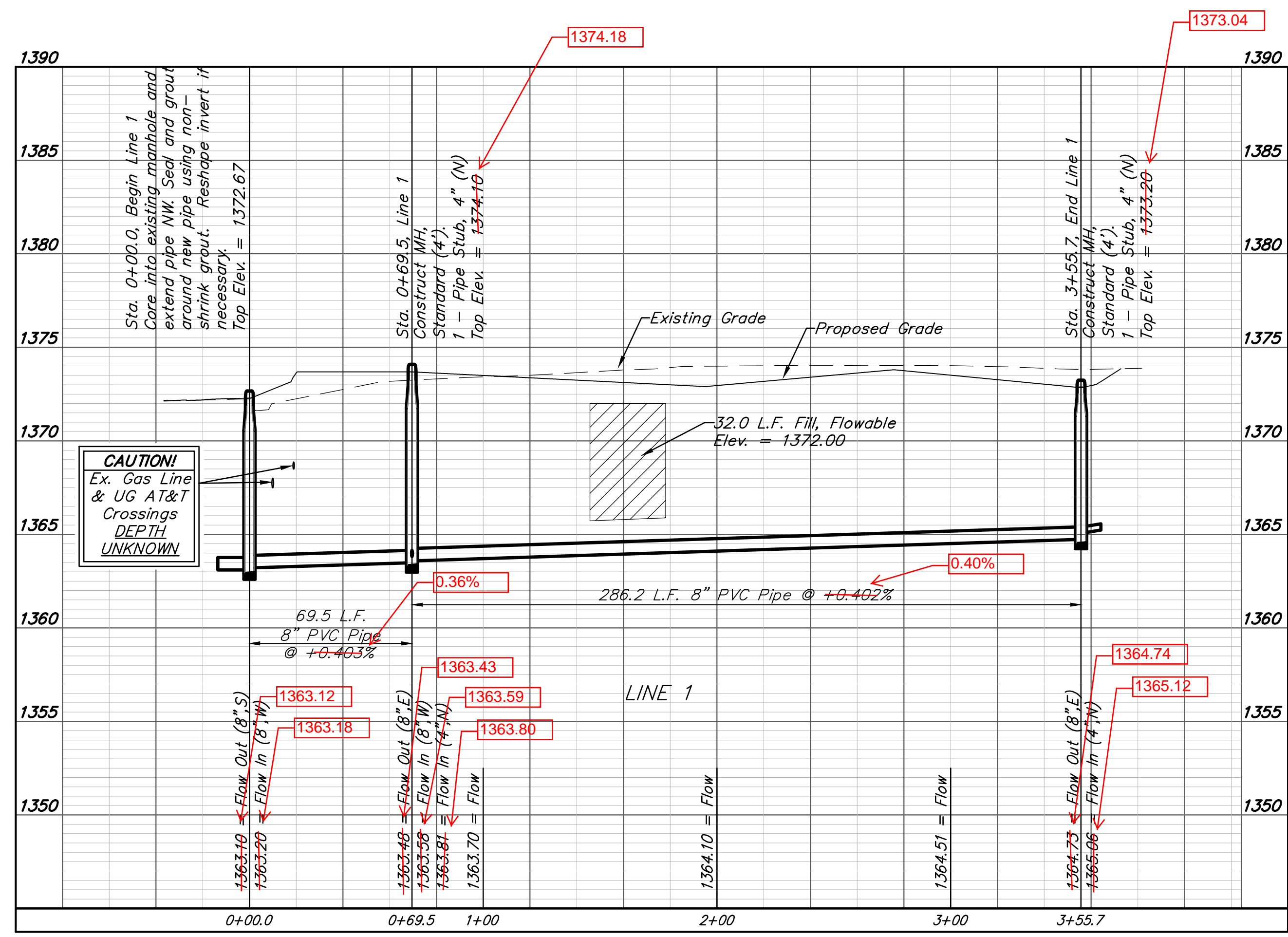
SEWER SERVICE TABLE

NUMBER	TYPE	LOCATION			FOR INFORMATION ONLY		
		LOT NO.	BLOCK NO.	LINE NO.	STATION \ DIRECTION	APPROXIMATE LENGTH 4" PIPE VERTICAL	HORIZONTAL
1	4" Stub	3	-	1	0+69.5/Rt.	6.0'	8.0'
2	8" X 4" Tee W/Riser	2	-	1	2+25.7/Rt.	-	8.0'
3	4" Stub	1	-	1	3+55.7/Rt.	4.5'	8.5'
4	8" X 4" Saddle Tap	4	-	1	-	-	19.8'

NOTE: Vertical Riser Pipe shall be extended to 2' minimum above ground water elevation and 4' maximum below proposed ground elevation.

Svc. 4 is 10' south of MH 6146-289

All trench and manhole excavation areas from Sta. 0+00 to Sta. 1+46.0 & Sta. 1+78.0 to Sta. 3+55.7, Line 1 shall be backfilled with sand. The sand backfill shall be within two feet of existing grade and shall be water-jetted and vibrated during backfilling. All costs shall be paid for as L.F. "Fill, Sand (Flushed & Vibrated)".



Contractor shall verify elevation and location of existing manhole prior to construction and notify Engineer of any discrepancy.

AS BUILTS

Contractor: Pearson Construction
 Inspector: Matt Perez
 Date: 1-21-19

KEMILLER ENGINEERING PA

117 E. Lewis,
 Wichita, KS 67202 (316)264-0242

