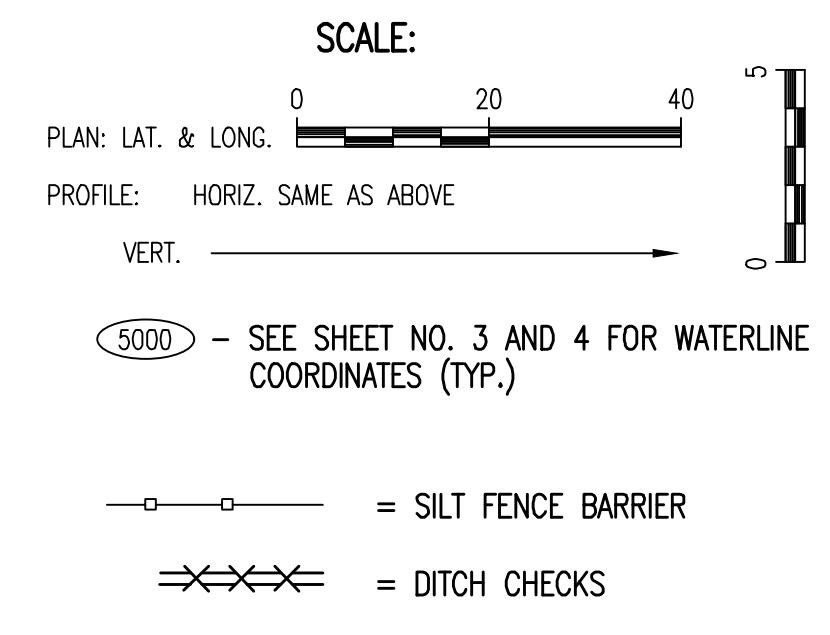
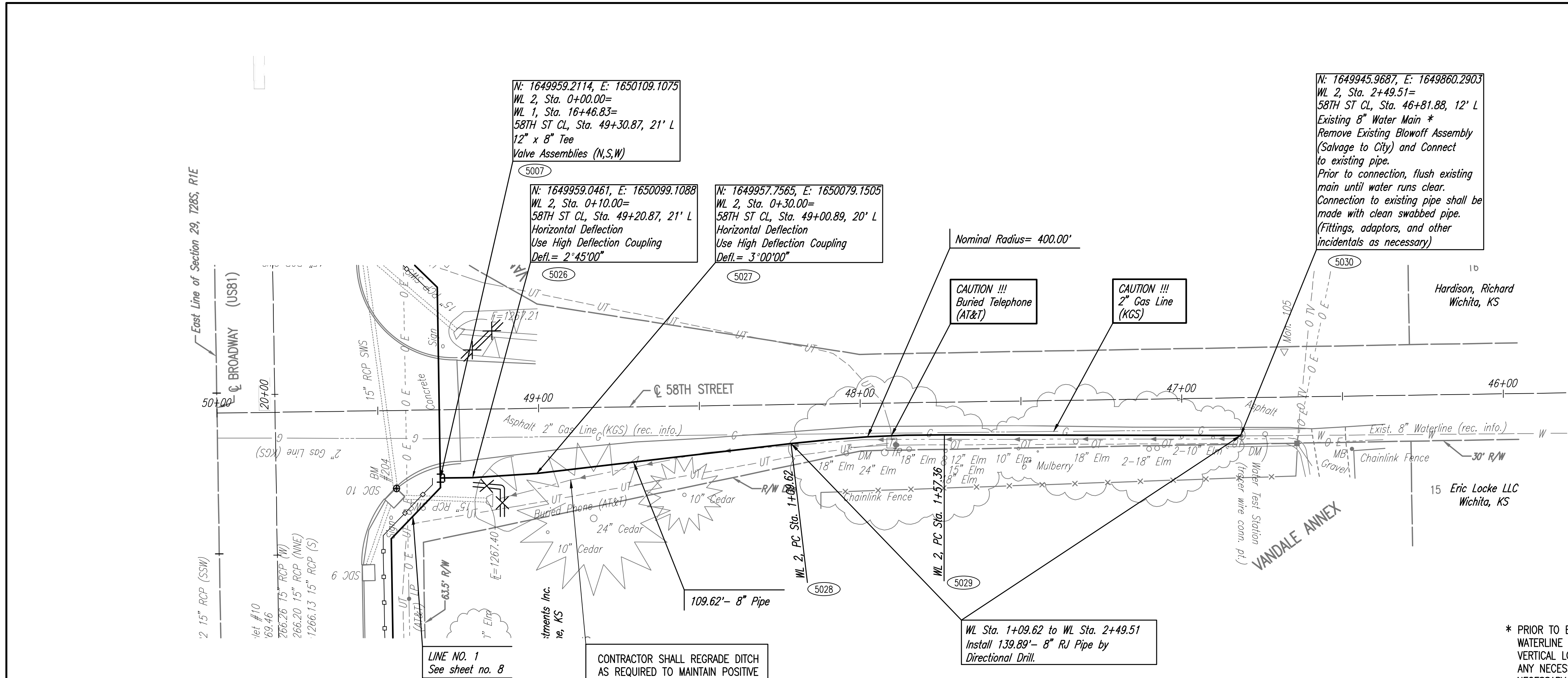


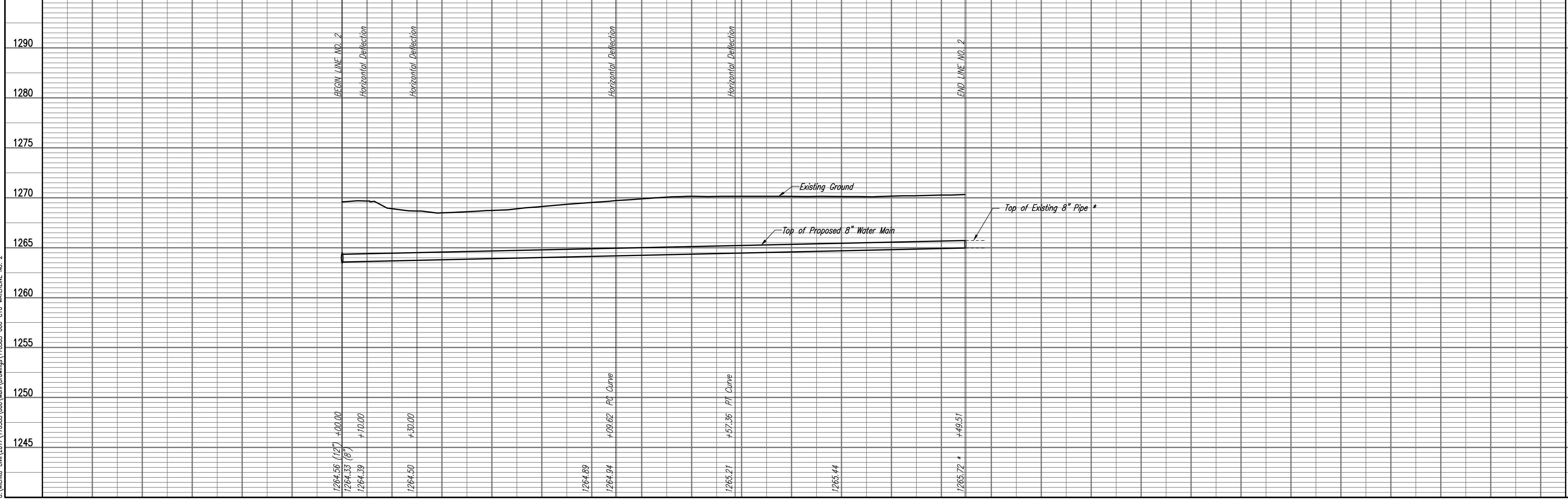
PLAN	CHECKED	DATE
	CHECKED	

PROFILE	CHECKED	DATE
	CHECKED	

Saved: 06-26-2018 8:47:41 AM by KURTIS DEKAT
 Plot Scale: 1" = 10' - 26-2018 8:55:24 AM by KURTIS DEKAT
 U:\Wichita-Civil\2017\70585\000\Wm\Drawings\70585-000-C16-WATERLINE NO. 2



Unless noted otherwise, elevations shown are top of pipe



* PRIOR TO BEGINNING CONSTRUCTION, THE CONTRACTOR SHALL EXCAVATE THE EXISTING 8" WATERLINE AT STATION 2+49.51 TO VERIFY PIPE SIZE, TYPE, FITTINGS, AND HORIZONTAL AND VERTICAL LOCATION. THE CONTRACTOR SHALL REPORT HIS FINDINGS TO THE ENGINEER SO THAT ANY NECESSARY PLAN MODIFICATIONS CAN BE MADE. ANY ADDITIONAL LABOR OR MATERIALS NECESSARY TO COMPLETE THE CONNECTION SHALL BE CONSIDERED SUBSIDIARY TO THE PROJECT.



WATER DISTRIBUTION IMPROVEMENTS
 12" WATERLINE ALONG BROADWAY, 55TH TO 63RD STREET SOUTH
 WATERLINE NO. 2

PROFESSIONAL ENGINEERING CONSULTANTS P.A.
 303 SOUTH TOPEKA WICHITA, KS 67202
 316-262-2681 www.pec1.com

Designed By: JAG, TBK
 Drawn By: CSL, KTD

Job No. 35-170585-000-0042
 Date August 2017

GARY JANZEN, P.E. - CITY ENGINEER
 CITY OF WICHITA PROJECT NO. 448-90821

Sheet 16 of 26