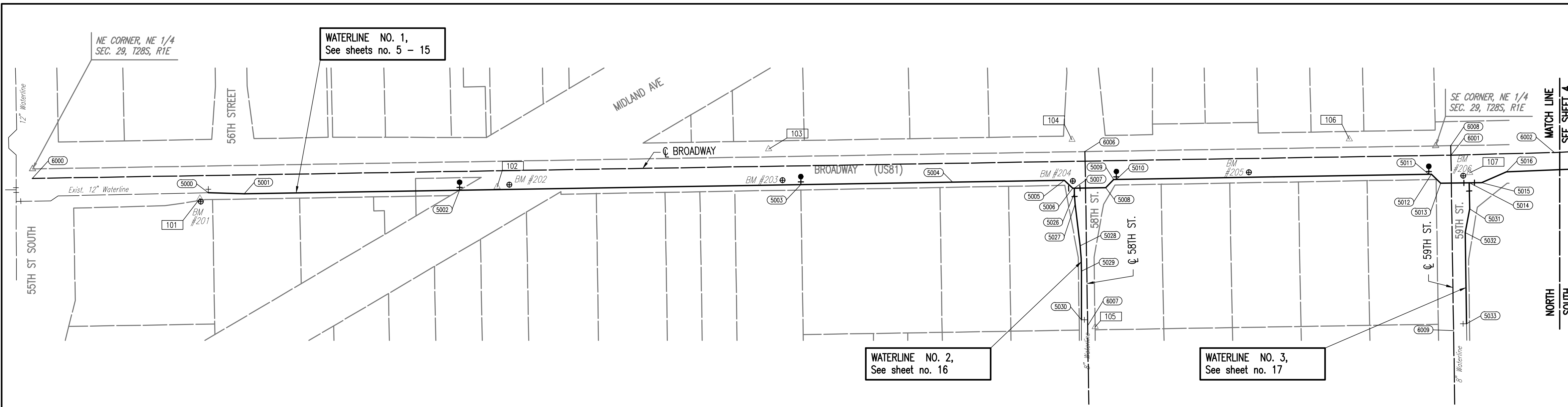


**LEGEND**

EXISTING WATER MAIN	—
PROPOSED WATER MAIN	—
EXISTING WATER VALVE	+
PROPOSED WATER VALVE	+
EXISTING FIRE HYDRANT	+
PROPOSED FIRE HYDRANT	+
EXISTING BLOW OFF	+
PROPOSED BLOW OFF	+



**CONTROL POINTS**

HCP-101  
 N: 1651615.40, E: 1650089.60 ELEV.= 1270.91 NAVD88  
 1/2" REBAR WITH PEC CONTROL CAP SET FLUSH WITH GROUND, EAST OF QUIK TRIP SIGN AT SOUTHEAST ENTRANCE.  
 9.25' NORTH TO SOUTH CURB LINE OF ENTRANCE.  
 15.50' SOUTH TO TOP BOLT ON FIRE HYDRANT.  
 15.85' EAST TO NORTH-SOUTH CURB LINE OF BROADWAY EXTENDED.  
 ELEV.= 1271.07 NAVD88

HCP-102  
 N: 1651052.62; E: 1650111.30 ELEV.= 1269.82 NAVD88  
 1/2" REBAR WITH PEC CONTROL CAP SET FLUSH WITH GROUND ON THE WEST SIDE OF BROADWAY, WEST OF THE SOUTH ENTRANCE TO "MONSTER AUTO REPAIR."  
 3.85' EAST TO THE WEST BACK OF CURB ON BROADWAY.  
 23.70' SOUTH-SOUTHEAST TO BMK-202.  
 6.03' SOUTHEAST TO A MAG NAIL IN TOP OF LONE WOOD POST.  
 ELEV.= 1269.32 NAVD88

HCP-103  
 N: 1650538.23; E: 1650183.08 ELEV.= 1270.15 NAVD88  
 1/2" REBAR WITH PEC CONTROL CAP SET FLUSH WITH GROUND ON THE EAST SIDE OF BROADWAY, IN LINE WITH AND WEST OF THE "FINE LINE AUTO" SIGN.  
 12.70' EAST OF A NORTH-SOUTH SQUARE TUBE FENCE.  
 6.17' WEST TO THE EAST BACK OF CURB ON BROADWAY.  
 34.84' SOUTH TO THE CENTERLINE OF THE SOUTH DRIVEWAY TO FINE LINE AUTO.  
 ELEV.= 1269.81 NAVD88

HCP-104  
 N: 1649963.62; E: 1650200.87 ELEV.= 1270.50 NAVD88  
 1/2" REBAR WITH PEC CONTROL CAP SET FLUSH WITH GROUND ON THE NORTHEAST CORNER OF THE INTERSECTION OF S BROADWAY ST. AND E 58TH ST. SO.  
 12.83' NORTHEAST TO THE SOUTH END OF A WOOD PRIVACY FENCE.  
 11.05' SOUTHEAST TO THE BASE OF A STOP SIGN POST.  
 26.66' SOUTH TO THE CENTERLINE OF 58TH ST.  
 ELEV.= 1269.42 NAVD88

HCP-105  
 N: 1649919.80; E: 1649846.68 ELEV.= 1269.58 NAVD88  
 1/2" REBAR WITH PEC CONTROL CAP SET FLUSH WITH GROUND IN THE BOTTOM OF THE DITCH ON THE SOUTH SIDE OF E 58TH ST. SO. NORTHEAST OF THE HOUSE AT 129 E. 58TH ST. SO.  
 32.48' SOUTHWEST TO THE NORTHEAST HOUSE CORNER.  
 4.18' NORTH TO THE SOUTH EDGE OF ASPHALT OF 58TH ST.  
 37.10' NORTHWEST TO BASE OF THE MAILBOX POST AT 128 E. 58TH ST. SO.  
 ELEV.= 1268.09 NAVD88

HCP-106  
 N: 1649438.57; E: 1650201.99 ELEV.= 1267.72 NAVD88  
 1/2" REBAR WITH PEC CONTROL CAP SET FLUSH WITH GROUND ON THE EAST SIDE OF BROADWAY, SOUTH OF THE DRIVEWAY FOR 5940 S. BROADWAY ST.  
 7.14' WEST TO THE EAST BACK OF CURB ON BROADWAY.  
 59.48' NORTH TO CENTERLINE DRIVEWAY FOR 5940 S. BROADWAY ST.  
 12.65' NORTH-NORTHEAST TO THE BASE OF A 45MPH SIGN POST.  
 ELEV.= 1266.49 NAVD88

HCP-107  
 N: 1649210.70; E: 1650138.28 ELEV.= 1267.01 NAVD88  
 1/2" REBAR WITH PEC CONTROL CAP SET FLUSH WITH GROUND ON THE SOUTHWEST CORNER OF THE INTERSECTION OF S BROADWAY ST. AND E 59TH ST. SO.  
 13.25' NORTHWEST TO BMK-206.  
 8.28' EAST TO THE WEST BACK OF CURB OF BROADWAY EXTENDED.  
 33.58' NORTH TO CENTERLINE OF 59TH ST.  
 ELEV.= 1267.01 NAVD88

**BENCHMARK LIST**

BM 201 - SQUARE CUT ON THE SOUTHEAST CORNER OF THE CONCRETE PAD FOR THE QUIK TRIP SIGN, NEAR THE SOUTHEAST ENTRANCE. 10.6'± NORTH THE SOUTH CURB LINE OF THE ENTRANCE. 16.3'± SOUTHEAST TO THE TOP OF A FIRE HYDRANT. 22.0'± EAST TO THE NORTH-SOUTH CURB LINE OF BROADWAY ST. EXTENDED.  
 ELEV.= 1271.07 NAVD88

BMK-202 - SQUARE CUT ON THE SOUTHEAST CORNER OF THE 1ST CURB INLET SOUTH OF A 6' CHAIN-LINK FENCE ON THE WEST SIDE OF S. BROADWAY ST., SOUTH OF 55TH ST. SO. 63.45'± NORTH-NORTHWEST TO THE SOUTHEAST CORNER OF CHAIN-LINK FENCE. 17.60'± NORTH TO A MAG NAIL IN THE TOP OF A LONE WOOD POST. 23.70'± NORTH-NORTHWEST TO HCP-102.  
 ELEV.= 1269.32 NAVD88

BMK-203 - SQUARE CUT ON THE SOUTHEAST CORNER OF THE CURB INLET SOUTH OF THE MAILBOX FOR 5833 S BROADWAY ST. 7.5'± NORTH-NORTHWEST TO THE MAILBOX POST AT GROUND. 21.5'± NORTH TO THE CENTERLINE OF THE SOUTH DRIVE TO 5833 S BROADWAY ST. 6.4'± NORTHWEST TO THE "±" IN 205+00, STAMPED IN THE CONCRETE ROADWAY.  
 ELEV.= 1269.81 NAVD88

BMK-204 - SQUARE CUT ON THE SOUTH CORNER OF THE CURB INLET ON THE NORTHWEST CORNER OF THE INTERSECTION OF S BROADWAY ST. AND E 58TH ST. SO. 9.3'± NORTHEAST TO THE BASE OF THE STREET SIGN POST. 23.8'± SOUTH TO THE CENTERLINE OF 58TH ST. 46.3'± SOUTHWEST TO THE BASE OF THE STOP SIGN POST.  
 ELEV.= 1269.42 NAVD88

BMK-205 - SQUARE CUT ON THE NORTHEAST CORNER OF THE CURB INLET NORTH OF THE ENTRANCE TO 5935 S BROADWAY ST. 31.0'± SOUTH TO CENTERLINE OF DRIVEWAY. 19.1'± WEST TO BASE OF STEEL SIGN POST. 37.9'± NORTH-NORTHWEST TO THE EAST FACE OF A ELECTRIC LIGHT POLE/ POWER POLE.  
 ELEV.= 1268.09 NAVD88

BMK-206 - SQUARE CUT ON THE NORTHEAST CORNER OF THE CURB INLET ON THE SOUTHWEST CORNER OF THE INTERSECTION OF S BROADWAY ST. AND E 59TH ST. SO. 6.2'± SOUTH TO THE BASE OF THE STREET SIGN POST. 21.3'± NORTH TO THE CENTERLINE OF 59TH ST. 13.1'± EAST TO THE WEST BACK OF CURB LINE OF BROADWAY EXTENDED.  
 ELEV.= 1266.49 NAVD88

**CL BROADWAY**

COORDINATE LIST			
POINT	NORTHING	EASTING	STATION
6000	1,651,932.9184	1,650,127.8531	0+00.00
6001	1,649,245.8953	1,650,171.8732	26+87.38
6002	1,649,049.9122	1,650,176.8750	28+83.43

**CL 58TH STREET**

COORDINATE LIST			
POINT	NORTHING	EASTING	STATION
6006	1,649,939.0254	1,650,178.5539	0+00.00
6007	1,649,934.0461	1,649,848.5914	46+70.00

**CL 59TH STREET**

COORDINATE LIST			
POINT	NORTHING	EASTING	STATION
6008	1,649,246.1658	1,650,189.8212	0+00.00
6009	1,649,240.8925	1,649,839.8609	46+50.00

**WATERLINE NO. 1**

COORDINATE LIST				
POINT	NORTHING	EASTING	STATION	DESCRIPTION
5000	1,651,599.6171	1,650,100.8931	0+00.00	EXIST. 12" CAP
5001	1,651,531.5528	1,650,098.9214	0+68.09	DEFLECTION
5002	1,651,123.6145	1,650,105.6136	4+76.09	FIRE HYDRANT
5003	1,650,477.3643	1,650,116.2153	11+22.42	FIRE HYDRANT
5004	1,650,189.8262	1,650,120.9323	14+10.00	AIR RELEASE
5005	1,649,978.0712	1,650,124.4061	16+21.78	45° BEND
5006	1,649,962.2110	1,650,109.0579	16+43.85	45° BEND
5007	1,649,959.2114	1,650,109.1075	16+46.85	TEE
5008	1,649,899.9305	1,650,110.0875	17+06.14	45° BEND
5009	1,649,884.5939	1,650,125.9396	17+28.20	45° BEND
5010	1,649,879.5907	1,650,126.0216	17+33.20	FIRE HYDRANT
5011	1,649,287.9110	1,650,135.7193	23+24.96	FIRE HYDRANT
5012	1,649,282.9117	1,650,135.8012	23+29.96	45° BEND
5013	1,649,265.2578	1,650,118.7167	23+54.53	45° BEND
5014	1,649,211.4007	1,650,119.5994	24+08.39	TEE
5015	1,649,187.8549	1,650,119.9854	24+31.94	22 1/2° BEND
5016	1,649,140.7948	1,650,140.3882	24+83.24	22 1/2° BEND

**WATERLINE NO. 2**

COORDINATE LIST				
POINT	NORTHING	EASTING	STATION	DESCRIPTION
5007	1,649,959.2114	1,650,109.1075	0+00.00	TEE
5026	1,649,959.0461	1,650,099.1088	0+10.00	DEFLECTION
5027	1,649,957.7565	1,650,079.1505	0+30.00	DEFLECTION
5028	1,649,948.4708	1,650,000.0702	1+09.62	PC
5029	1,649,945.7426	1,649,952.4410	1+57.36	PC
5030	1,649,945.9687	1,649,860.2903	2+49.51	EXIST. BLOWOFF

**WATERLINE NO. 3**

COORDINATE LIST				
POINT	NORTHING	EASTING	STATION	DESCRIPTION
5014	1,649,211.4007	1,650,119.5994	0+00.00	TEE
5031	1,649,210.5895	1,650,070.1071	0+49.50	11 1/4° BEND
5032	1,649,218.8210	1,650,025.2774	0+95.08	11 1/4° BEND
5033	1,649,216.2750	1,649,852.7600	2+67.62	EXIST. BLOWOFF

SEE SHEET NO. 4 FOR CONTINUATION

(5000) = COORDINATE POINT NO.

Served 06-26-2018 8:08:58 AM by KURTIS DEKAT  
 Plot Scale 1:1 06-26-2018 8:53:21 AM by KURTIS DEKAT  
 U:\Wichita-Civil\2017\170585\000\Main\Drawings\170585-000-003-BUBBLE MAP NORTH

No.	Revision	By	Date
<b>WATER DISTRIBUTION IMPROVEMENTS</b> <b>12" WATERLINE ALONG BROADWAY, 55TH TO 63RD STREET SOUTH</b> <b>BUBBLE MAP NORTH</b> GARY JANZEN, P.E. - CITY ENGINEER CITY OF WICHITA PROJECT NO. 448-90821			
Designed by	JAG, TBK	Job No.	35-170585-0-42
Drawn by	CSL, KTD	Date	August 2017
			Sht. 3 of 26