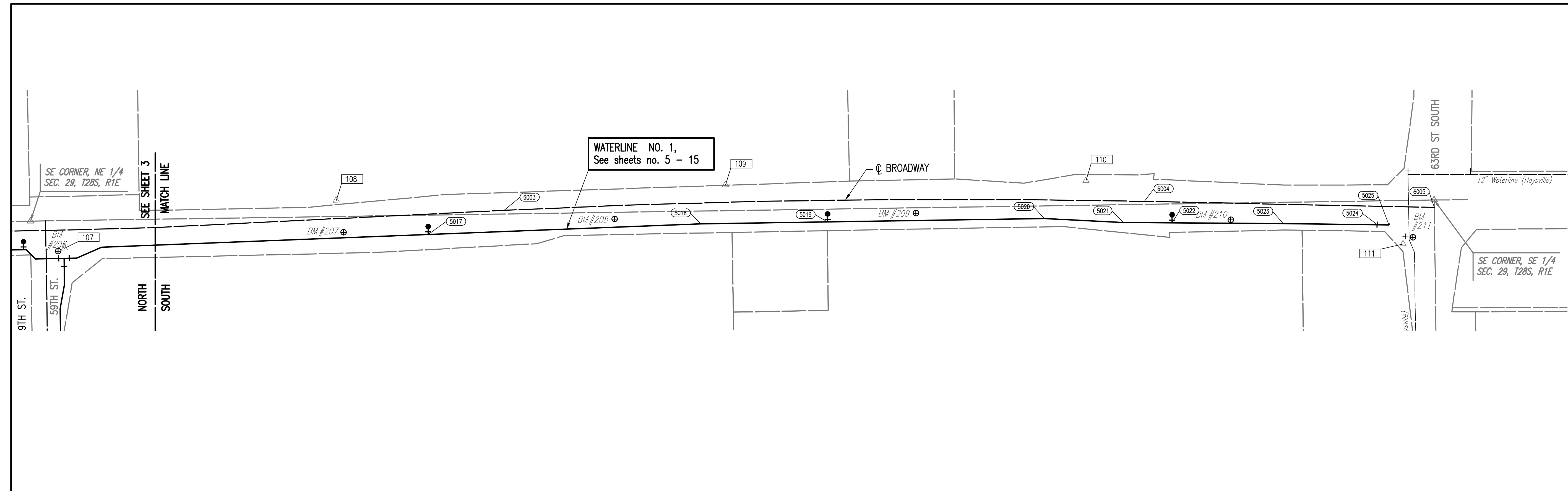


LEGEND

EXISTING WATER MAIN	---
PROPOSED WATER MAIN	---
EXISTING WATER VALVE	+
PROPOSED WATER VALVE	+
EXISTING FIRE HYDRANT	●
PROPOSED FIRE HYDRANT	●
EXISTING BLOW OFF	+
PROPOSED BLOW OFF	+



CONTROL POINTS

- HCP-108**
 N: 1648698.95; E: 1650228.29 ELEV.= 1268.11 NAVD88
 1/2" REBAR WITH PEC CONTROL CAP SET FLUSH WITH GROUND ON THE EAST SIDE OF BROADWAY, SOUTH OF THE 3RD POWER POLE SOUTH OF THE SUB-STATION.
 7.37' WEST TO THE EAST BACK OF CURB ON BROADWAY.
 64.05' SOUTH-SOUTHEAST TO THE WEST FACE OF THE 4TH POWER POLE SOUTH OF THE SUB-STATION.
 84.85' NORTH-NORTHEAST TO THE WEST FACE OF THE 3RD POWER POLE SOUTH OF THE SUB-STATION.
- HCP-109**
 N: 1647966.10; E: 1650257.23 ELEV.= 1268.37 NAVD88
 1/2" REBAR WITH PEC CONTROL CAP SET FLUSH WITH GROUND ON THE EAST SIDE OF BROADWAY, IN LINE WITH THE CENTERLINE OF THE NORTH DRIVEWAY TO THE PICK-UP DEALERSHIP AT 6151 S. BROADWAY ST.
 4.68' WEST TO THE EAST BACK OF CURB ON BROADWAY.
 73.06' NORTH-NORTHEAST TO THE WEST FACE OF A STREET LIGHT POLE/ POWER POLE.
 75.66' SOUTH-SOUTHEAST TO THE WEST FACE OF A STREET LIGHT POLE/ POWER POLE.
- HCP-110**
 N: 1647287.40; E: 1650265.01 ELEV.= 1266.30 NAVD88
 1/2" REBAR WITH PEC CONTROL CAP SET FLUSH WITH GROUND ON THE EAST SIDE OF BROADWAY, WEST OF THE 4TH STREET LIGHT POLE NORTH OF 63RD ST.
 11.79' EAST OF THE SOUTH FACE OF THE LIGHT POLE.
 5.20' WEST TO THE EAST BACK OF CURB ON BROADWAY.
- HCP-111**
 N: 1646690.48; E: 1650146.27 ELEV.= 1267.35 NAVD88
 1/2" REBAR WITH PEC CONTROL CAP SET FLUSH WITH GROUND ON THE NORTHWEST CORNER OF THE INTERSECTION OF S. BROADWAY ST. AND E 63RD ST. SO.
 22.69' SOUTHEAST TO BMK-211.
 28.27' SOUTH TO THE EAST FACE OF THE TRAFFIC SIGNAL POLE BASE.
 18.25' EAST TO THE CENTER OF THE TRAFFIC SIGNAL MANHOLE LID.

BENCHMARK LIST

- BMK-207**— SQUARE CUT ON THE WEST BACK OF CURB OF S. BROADWAY ST. EAST OF THE 1ST POWER POLE SOUTH OF THE DRIVEWAY FOR 6025 S. BROADWAY ST. 15.71± WEST TO A MAG NAIL IN THE NORTH FACE OF THE POWER POLE. 24.6± NORTH-NORTHWEST TO A MAG NAIL IN THE EAST FACE OF "511 TRAVEL INFO" SIGN POST. 232± NORTH TO THE CENTERLINE OF THE DRIVEWAY FOR 6025 S. BROADWAY ST.
 ELEV.= 1267.52 NAVD88
- BMK-208**— SQUARE CUT ON THE WEST BACK OF CURB OF S BROADWAY ST., EAST OF THE 1ST POWER POLE NORTH OF 6151 S BROADWAY ST. 24.4± WEST TO A MAG NAIL IN THE NORTH FACE OF THE POWER POLE. 46.5± NORTHWEST TO THE BASE OF AN ELECTRIC METER RISER.
 ELEV.= 1268.23 NAVD88
- BMK-209**— SQUARE CUT ON THE WEST BACK OF CURB OF S BROADWAY ST., BETWEEN 1ST AND 2ND POWER POLES SOUTH OF THE PICK-UP DEALERSHIP AT 6151 S BROADWAY ST. 58.2± SOUTHWEST TO A MAG NAIL IN THE EAST FACE OF THE 2ND POWER POLE SOUTH OF THE DEALERSHIP. 87.8± NORTH TO A MAG NAIL IN THE WEST FACE OF THE 45MPH SIGN POST.
 ELEV.= 1267.12 NAVD88
- BMK-210**— SQUARE CUT ON THE WEST BACK OF CURB OF S BROADWAY ST., SOUTHEAST OF THE 3RD POWER POLE NORTH OF 63RD ST. 51.0± NORTHWEST TO THE EAST FACE OF THE 3RD POWER POLE NORTH OF 63RD ST. 9.0± EAST TO THE "+" IN 170+00, STAMPED IN THE CONCRETE ROADWAY.
 ELEV.= 1266.74 NAVD88
- BMK-211**— SQUARE CUT ON THE SOUTH EDGE OF THE CURB INLET ON THE NORTHWEST CORNER OF THE INTERSECTION OF S BROADWAY ST. AND E 63RD ST. SO. 17.0± WEST TO THE SOUTH FACE OF THE BASE OF THE TRAFFIC SIGNAL POLE. 42.0± NORTH-NORTHEAST TO A SPIKE AND SHINER IN THE WEST FACE OF A POWER POLE. 21.1± NORTH TO THE CENTER OF A TRAFFIC SIGNAL MANHOLE LID.
 ELEV.= 1266.97 NAVD88

WATERLINE NO. 1				
COORDINATE LIST				
POINT	NORTHING	EASTING	STATION	DESCRIPTION
5017	1,648,525.7047	1,650,164.4088	30+98.79	FIRE HYDRANT
5018	1,648,012.6692	1,650,184.4439	36+12.22	DEFLECTION
5019	1,647,773.5309	1,650,188.0426	38+51.39	FIRE HYDRANT
5020	1,647,365.8452	1,650,194.1778	42+59.12	DEFLECTION
5021	1,647,216.7546	1,650,187.0640	44+08.38	DEFLECTION
5022	1,647,125.1361	1,650,186.3685	45+00.00	FIRE HYDRANT
5023	1,646,915.9123	1,650,184.7801	47+09.23	DEFLECTION
5024	1,646,739.0906	1,650,182.7668	48+86.06	ANCHORED VALVE
5025	1,646,716.6134	1,650,182.5109	49+08.54	BLOWOFF VALVE

(5000) = COORDINATE POINT NO.

CL BROADWAY			
COORDINATE LIST			
POINT	NORTHING	EASTING	STATION
6003	1,648,382.6909	1,650,209.6761	35+51.46
6004	1,647,177.0448	1,650,226.6042	47+57.47
6005	1,646,631.3229	1,650,215.1195	53+03.31

Served 06-25-2018 5:08:35 PM by KUPFIS/DEKAT
 Plot Scale 1:1 06-26-2018 8:53:26 AM by KUPFIS/DEKAT
 U:\Wichita-Civil\2017\170585\000\Main\Drawings\170585-000-C04-BIBBLE MAP SOUTH

	Revision		By	Date
	WATER DISTRIBUTION IMPROVEMENTS 12" WATERLINE ALONG BROADWAY, 55TH TO 63RD STREET SOUTH BUBBLE MAP SOUTH			
	GARY JANZEN, P.E. - CITY ENGINEER CITY OF WICHITA PROJECT NO. 448-90821			
	PROFESSIONAL ENGINEERING CONSULTANTS, P.A. 303 SOUTH TOPEKA WICHITA, KS 67202 316-262-2891 www.pec1.com			
Designed by	JAG, TBK	Job No.	35-170585-0-42	Sht. 4 of 26
Drawn by	CSL, KTD	Date	August 2017	