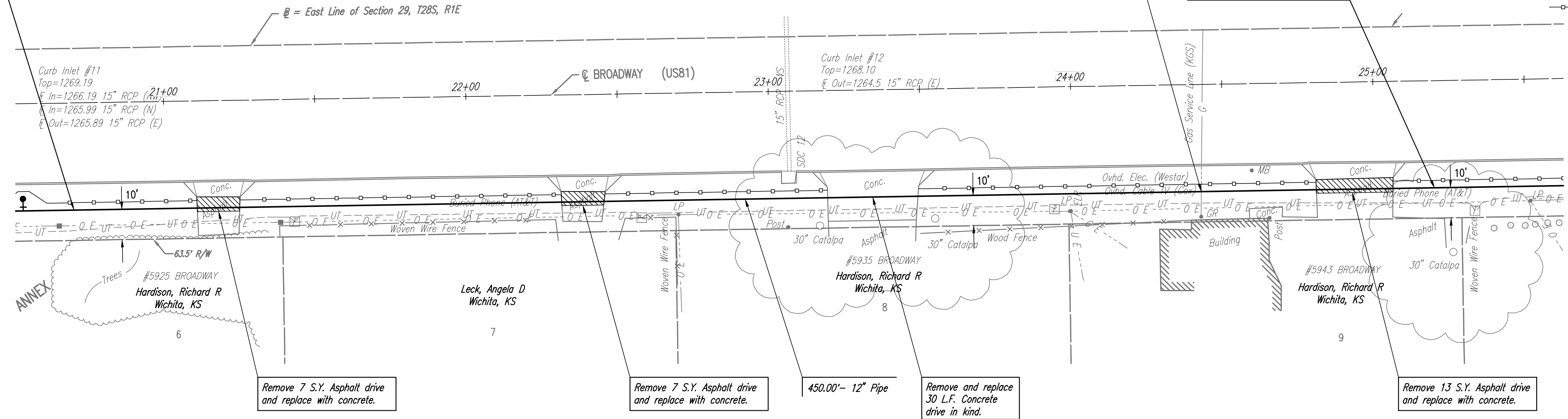
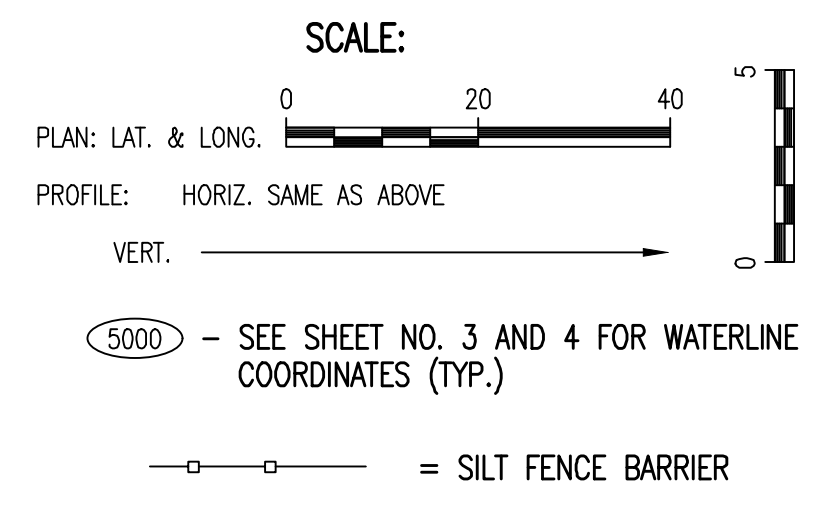


| | | |
|------|---------|------|
| PLAN | CHECKED | DATE |
| | CHECKED | |

| | | |
|---------|---------|------|
| PROFILE | CHECKED | DATE |
| | CHECKED | |

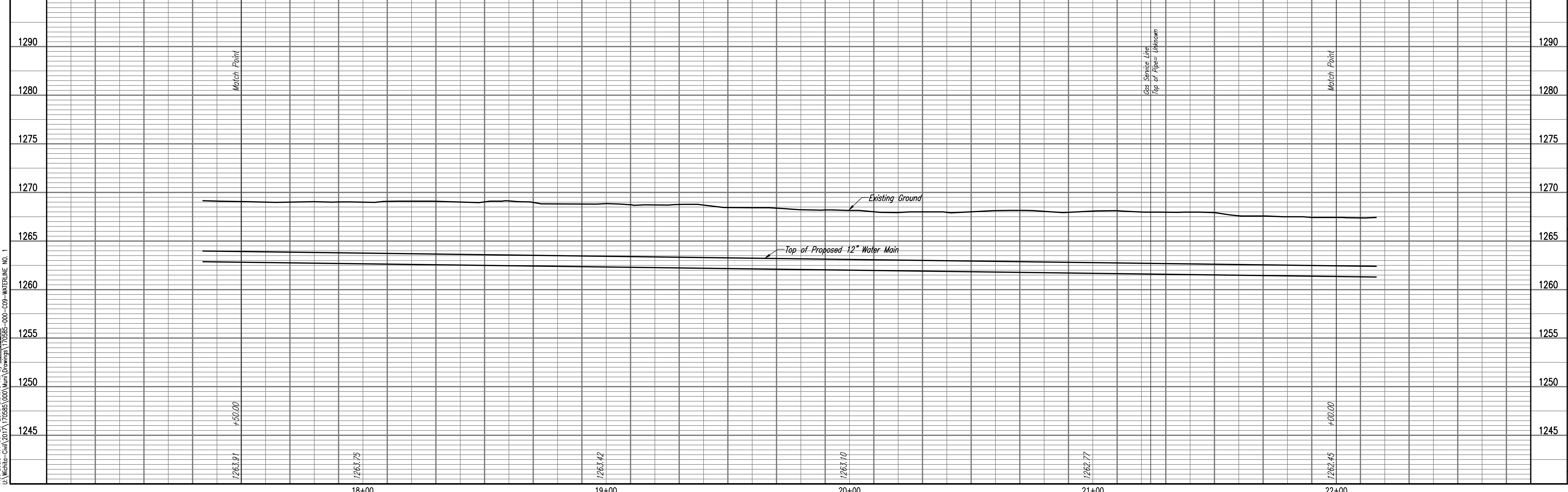
N: 1649862.7927, E: 1650126.2970
 WL 1, Sta. 17+50.00=
 BROADWAY CL, Sta. 20+69.82, 35' R
 Match Point

N: 1649412.8531, E: 1650133.6715
 WL 1, Sta. 22+00.00=
 BROADWAY CL, Sta. 25+19.82, 35' R
 Match Point



Unless noted otherwise, elevations shown are top of pipe

WATERLINE NO. 1



Saved: 11-29-2017 2:50:13 PM by KURTS DEKAT
 Plot Scale: 1" = 10'-0" (Horizontal), 1" = 10'-0" (Vertical)
 U:\Wichita-Civil\2017\170585\000\Main\Drawings\170585-000-009-WATERLINE NO. 1

PROFESSIONAL ENGINEERING CONSULTANTS P.A.
 308 SOUTH TOPEKA WICHITA, KS 67202
 316-262-2681 www.pec1.com

PEC

Designed By: JAG, TBK
 Drawn By: CSL, KTD

Job No.: 35-170585-000-0042
 Date: August 2017

WATER DISTRIBUTION IMPROVEMENTS
 12" WATERLINE ALONG BROADWAY, 55TH TO 63RD STREET SOUTH
 WATERLINE NO. 1

GARY JANZEN, P.E. - CITY ENGINEER
 CITY OF WICHITA PROJECT NO. 448-90821

Sheet 9 of 26