

# GENERAL NOTES:

1. The Contractor shall comply with all applicable safety regulations. All construction shall be completed following current City Standard Specifications and Special Provisions.

2. Contractor will be required to provide notice to utility companies a minimum of seventy-two (72) hours prior to any excavation, as follows:

Kansas One-Call 687-2470

The Contractor must notify the following in case of an emergency:

AT&T 1-800-246-8464  
 Black Hills Energy 1-800-694-8989  
 City of Wichita Water & Sewer 1-316-219-8921  
 City of Wichita Stormwater 1-316-268-4090  
 City of Wichita Traffic 1-316-268-4034  
 Cox Communications 1-888-249-3530  
 Kansas Gas Service 1-888-482-4950  
 Westar Energy 1-800-544-4857

3. Utility service lines, poles, etc. are to be adjusted as necessary by others prior to construction unless the plans specifically call for their adjustment by the Contractor or unless the plans specifically identify a utility to be adjusted by its owner during construction. Existing utilities and their location, as shown on the plans, represent the best information obtainable for design. The Contractor will be required to work around existing utilities within the right-of-way which do not conflict with proposed construction.

4. Rubble from the removal of miscellaneous structures and excess excavation which is to be wasted shall be disposed of on sites to be provided by the Contractor. These sites shall be approved by the Engineer as to suitability, appearance and site location. Locations, in the opinion of the Engineer, that will leave an unsightly appearance will not be approved. All disposal sites must be approved by the Kansas Department of Health and Environment. Material either stockpiled or disposed of in a flood plain will require a Kansas State Board of Agriculture permit. Any material dumped in waters of the United States or wetlands is subject to U.S. Corps of Engineers permitting regulations. Any material buried or stockpiled beyond approved construction limits will require additional archaeological investigations unless buried in a previously approved borrow location.

5. Trees and shrubs in public right-of-way which are in direct conflict with proposed new construction shall be removed by the Contractor with the City Engineer's approval. Trees and shrubs which are not in direct conflict with proposed new construction shall be saved and protected from damage.

6. The Contractor shall give all property owners and/or tenants of developed property abutting the construction of this project a minimum of ten (10) days notice prior to start of construction.

7. The Contractor shall be responsible for preserving property irons. The Contractor will be required to re-establish any property irons which are damaged or destroyed by his construction operations. Such irons shall be re-established by a licensed land surveyor in accordance with state laws.

8. If traffic will be impacted by construction, a traffic control plan must be submitted and approved by the City Traffic Engineer, Brian Coon at [traffic@wichita.gov](mailto:traffic@wichita.gov) before construction can begin. The Contractor shall be responsible for all traffic control measures to facilitate construction. All construction zone markings and signage shall conform to the latest version of Manual on Uniform Traffic Control Devices (MUTCD) as published by the US Dept. of Transportation, Federal Highway Administration. All costs associated with construction markings and signage shall be the Contractors responsibility.

9. All elevations shown are NAVD 88.

10. All areas disturbed during construction that will not be under proposed pavement shall be restored to match existing conditions.

11. All existing pavement and curb and gutter within the construction limits shall be saw cut, full depth, to the lines shown on the plans, or to the nearest joint, and removed, unless otherwise noted. If removal limits are within three feet of a joint, remove to the joint.

12. Limits of earthwork shall match existing ground elevations at the right-of-way line unless otherwise noted on the plans with a new finished grade elevation. When a new finished grade elevation is shown, the earthwork shall extend one foot beyond the right-of-way line and then slope up or down using permissible slopes to match the existing ground surface.

13. All existing and proposed erosion control measures including silt fencing, erosion control mat, straw bales, inlet barriers, and const. entrance shall be maintained throughout construction by the contractor and until project is accepted by the City of Wichita. The on-site engineer shall complete weekly reports on the status of erosion control measures. The contractor shall be required to comply with maintenance and/or replacement of erosion control measures as determined by the on-site engineer until project is accepted by City of Wichita. Maintenance and/or replacement of erosion control measures to be paid by L.S. bid item "Maintain Existing BMPs".

14. All excess excavation shall remain on-site and shall be stockpiled or spread at a location determined by the engineer.

15. All disturbed areas in and north of 27th St. N. from Sta. 0+00 to Sta. 8+00 shall be seeded and mulched as follows:

Seed -- Kansas Premium Fescue Blend; 8 lbs./1000 Sq. Ft.  
 PLS/1000 Sq. Ft.  
 Annual Rye grass; 3 lbs./1000 Sq. Ft.  
 Fertilizer -- 12-24-12 Ratio; 45 Lbs./Ac.  
 Mulch -- 2 Tons Prairie Hay/Ac.

All disturbed areas south of south curb of 27th St. N. to the south R/W with the exception of proposed sidewalk from Sta. 0+48.60 to Sta. 6+00 shall be sodded as indicated on erosion control plan.

All other disturbed areas are to be seeded as follows:

Seed -- Rye grass; 5 lbs./1000 Sq. Ft.

All costs associated with seeding including mobilization, preparation of ground, seeding, fertilizing, mulching, etc. shall be included in the L.S. bid item "Seeding".

An additional bid item for "Seeding, Temporary" has been included and may be used at the discretion of the design engineer. Temporary seed shall be Annual Rye at 5 lbs./1000 Sq. Ft. unless otherwise noted and shall be planted when permanent seed or sod cannot be used due to seasonal limitations.

16. The developer for this project is Ritchie Development, Kevin Mullen, (316)684-7300.

17. Water line construction is being delayed until the storm sewer is installed below the water line at the following locations:  
 Line 1, Sta. 0+00 to 2+24.5  
 Line 4  
 Line 5  
 The lines noted above shall be built in the order as listed so the water line project may proceed as the remaining storm sewer is constructed.

# STREET PAVING FOR 27TH ST. N. WITH INCIDENTAL SWS IMPROVEMENTS to serve **FIREFLY WAY ADD. PH. 2**

## CITY OF WICHITA, KANSAS

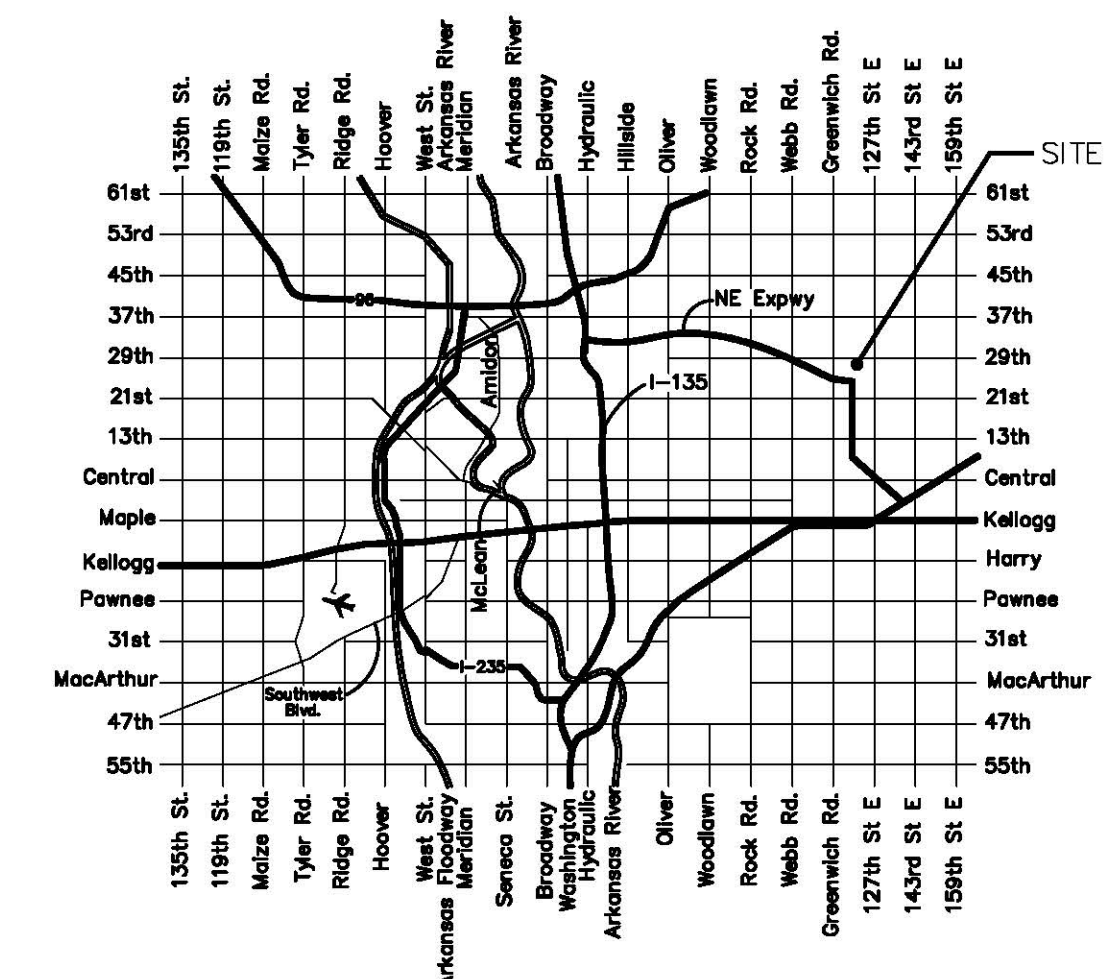
Gary Janzen, P.E. City Engineer

Project Number

472-85351

Firefly Way Add. Ph. 2 O.C.A. Number 766444

27th St. N. O.C.A. Number 766449

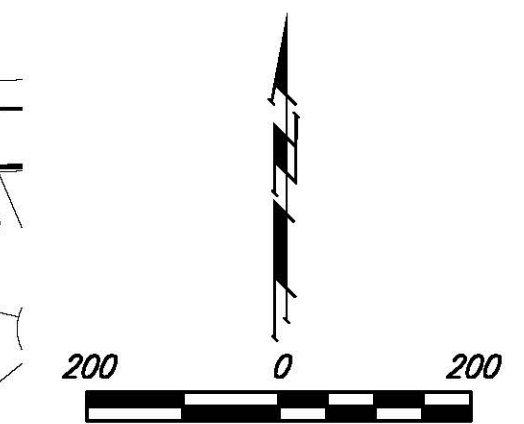
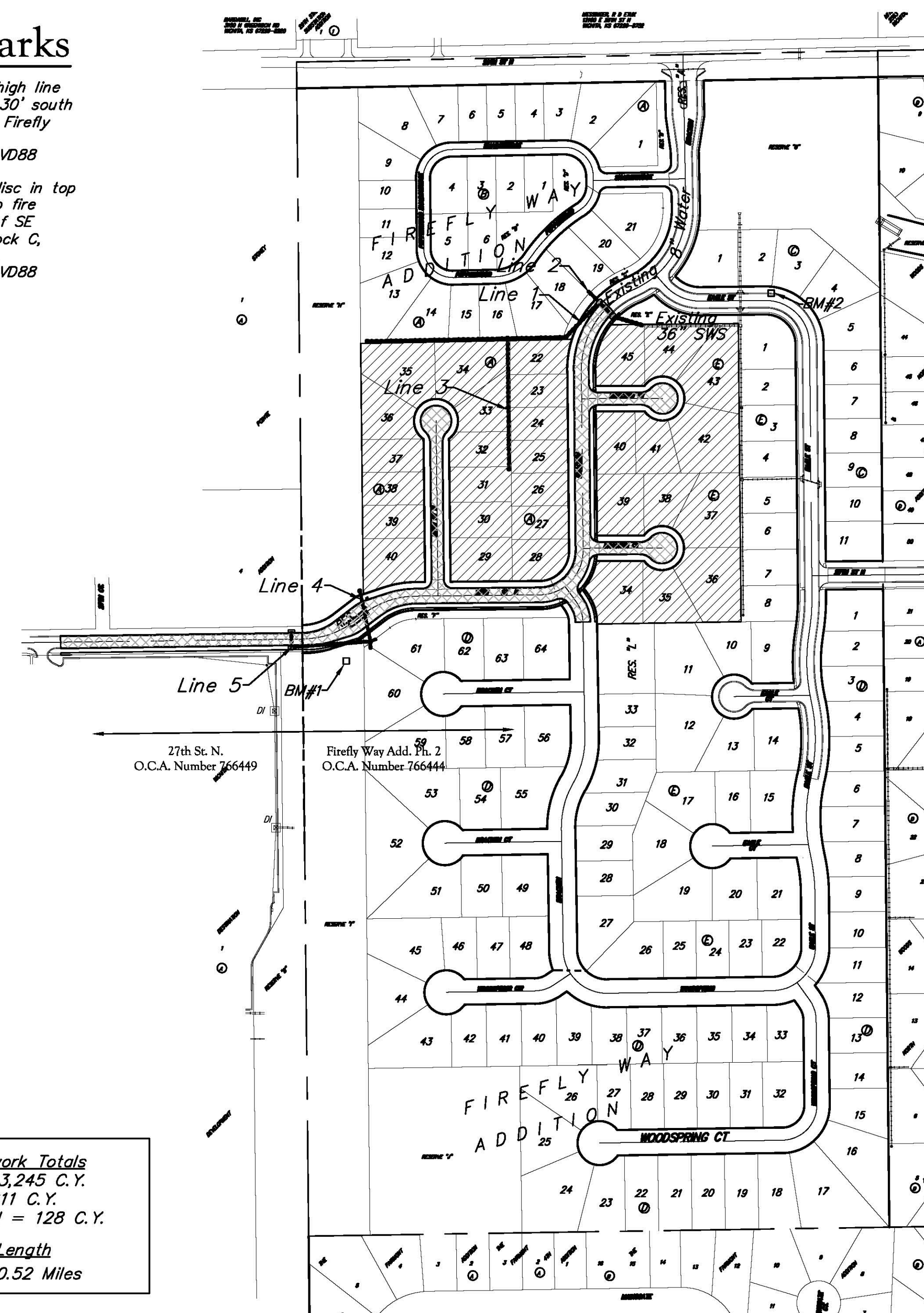


Vicinity Map

### Benchmarks

**BM#1:** RR spike in high line pole, 40' west and 30' south of Lot 60, Block D, Firefly Way Addition.  
 Elev. = 1399.54 NAVD88

**BM#2:** Benchmark disc in top of curb, adjacent to fire hydrant 15' south of SE corner of Lot 2, Block C, Firefly Way Addition.  
 Elev. = 1396.95 NAVD88



### Sheet Index

Title Sheet	1
27th St. N./Bracken	2-6
27th Ct. N.	7
Bracken	8
Bracken Ct. (Lots 34-39, Block E)	9
Bracken Ct. (Lots 40-45, Block E)	10
SWS Line 1	11-12
SWS Line 2	11
SWS Line 3	13
SWS Lines 4 & 5	14
Erosion Control/Esmt. Grading Plan	15
Asphalt Paving Detail	16
Curb & Gutter Detail	17
Sign Detail	18
Valley Gutter Detail	19
Wheelchair Ramp Detail	20
Entrance Detail	21
Type 1A Inlet L=5' and 10' Detail	22
Pavement Underdrain Detail	23
Backyard Inlet Detail	24
Miscellaneous Detail	25
Erosion Control BMP Details	26-30
Street X-Sections	31-40
Coordinate Sheet	41
Copy of Plat	42

**Project Earthwork Totals**  
 Excavation = 3,245 C.Y.  
 Loose Fill = 911 C.Y.  
 Compacted Fill = 128 C.Y.

**Total Project Length**  
 2,702 L.F. = 0.52 Miles

Benefit District  
 Proposed Streets



February 2019



Baughman Company, P.A. 315 Ellis St. Wichita, KS 67211 P 316-262-7271 F 316-262-0149  
 ENGINEERING | SURVEYING | PLANNING | LANDSCAPE ARCHITECTURE