

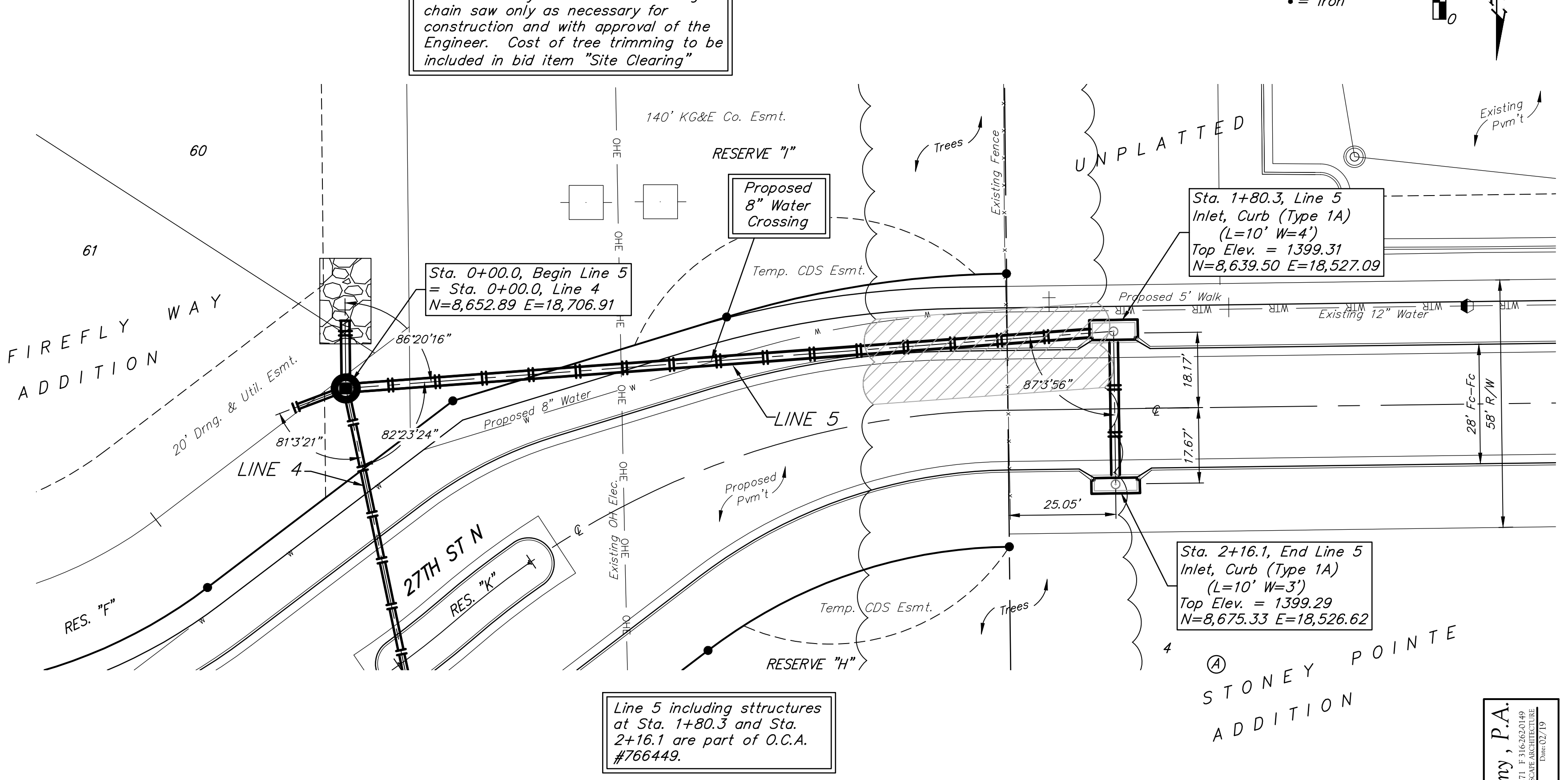
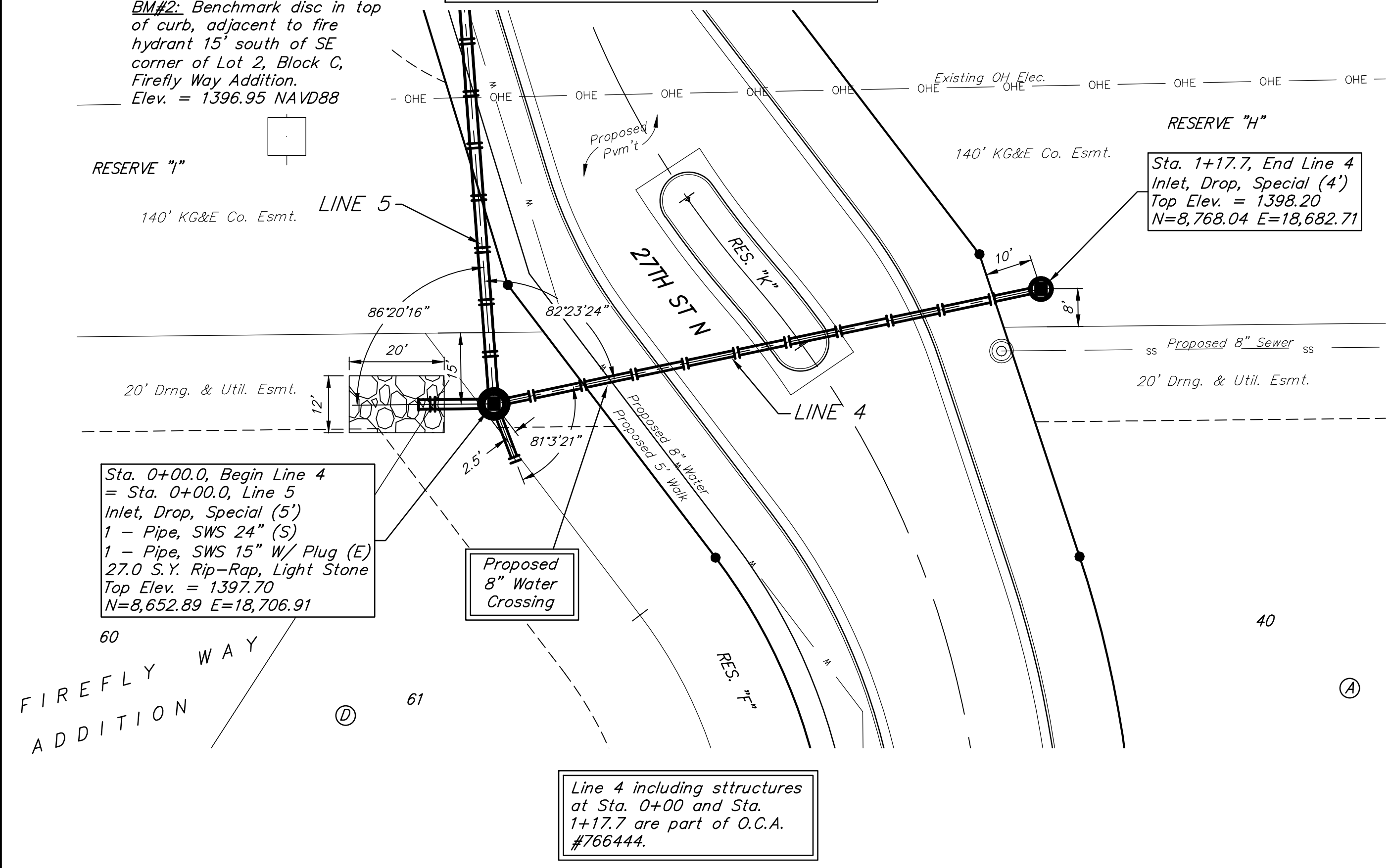
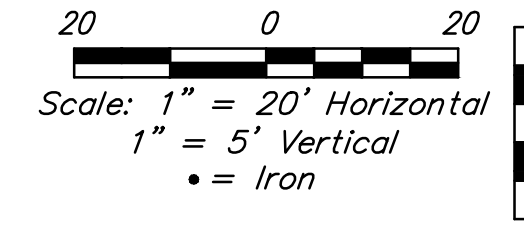
BENCHMARKS:
BM#1: RR spike in high line pole, 40' west and 30' south of Lot 60, Block D, Firefly Way Addition.
 Elev. = 1399.54 NAVD88

BM#2: Benchmark disc in top of curb, adjacent to fire hydrant 15' south of SE corner of Lot 2, Block C, Firefly Way Addition.
 Elev. = 1396.95 NAVD88

All trench and inlet excavation areas from Sta. 0+31.0 to Sta. 0+95.0, Line 4 and Sta. 1+80.3 to Sta. 2+16.1, Line 5 shall be backfilled with sand. The sand backfill shall be within two feet of existing grade and shall be water-jetted and vibrated during backfilling. All costs shall be paid for as L.F. "Fill, Sand (Flushed & Vibrated)".

Trees in conflict with SWS construction to be removed by contractor. To be paid for as lump sum bid item "Site Clearing"

All other trees shall remain and be protected from damage during construction. Overhanging limbs shall be trimmed by the Contractor using a chain saw only as necessary for construction and with approval of the Engineer. Cost of tree trimming to be included in bid item "Site Clearing"



Line 4 including structures at Sta. 0+00 and Sta. 1+17.7 are part of O.C.A. #766444.

Line 5 including structures at Sta. 1+80.3 and Sta. 2+16.1 are part of O.C.A. #766449.

