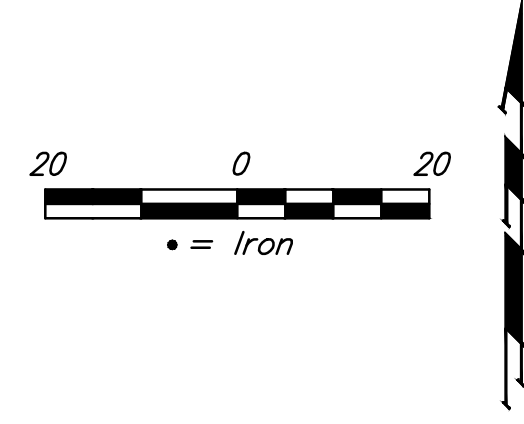
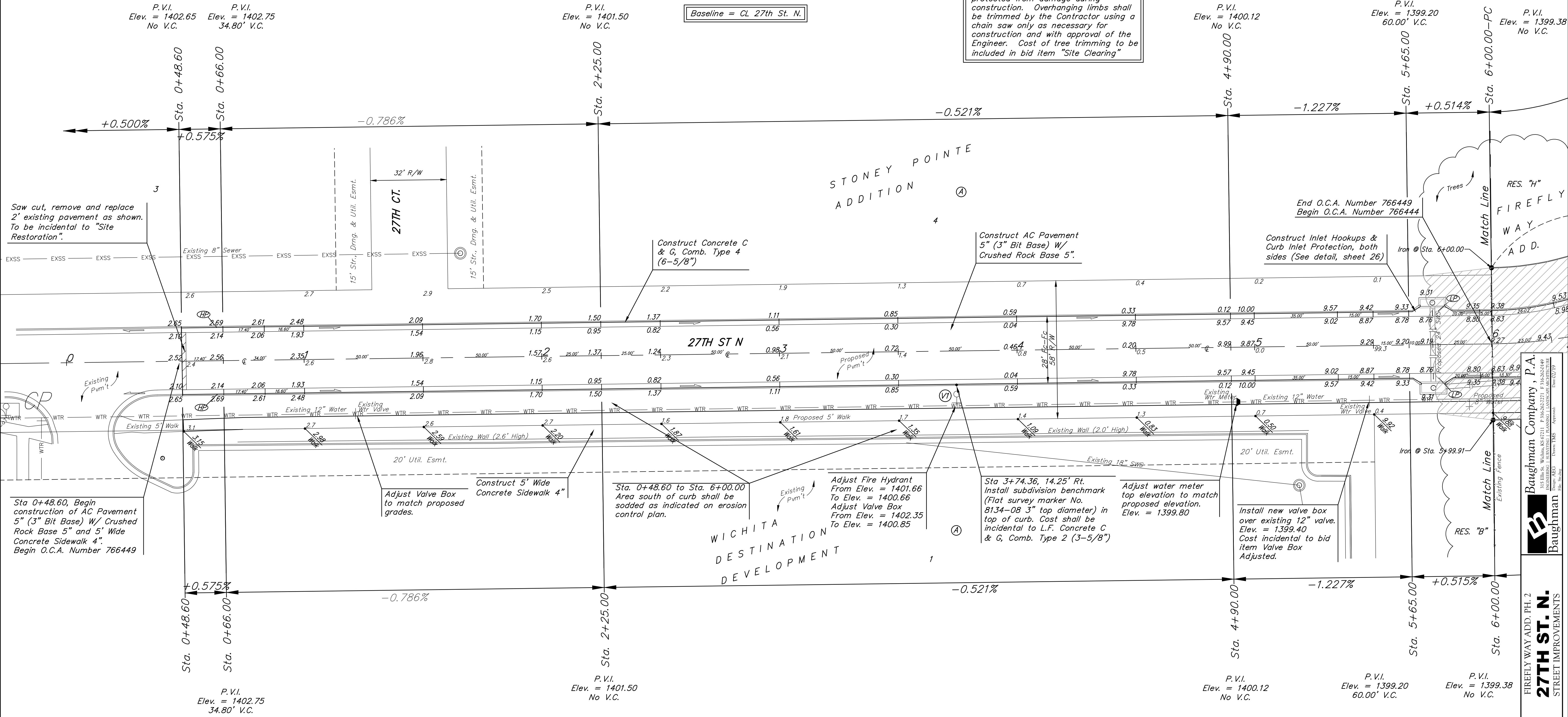


BENCHMARKS:
BM#1: RR spike in high line pole, 40' west and 30' south of Lot 60, Block D, Firefly Way Addition. Elev. = 1399.54 NAVD88
BM#2: Benchmark disc in top of curb, adjacent to fire hydrant 15' south of SE corner of Lot 2, Block C, Firefly Way Addition. Elev. = 1396.95 NAVD88



Trees in conflict with street construction to be removed by contractor. To be paid for as lump sum bid item "Site Clearing"
 All other trees shall remain and be protected from damage during construction. Overhanging limbs shall be trimmed by the Contractor using a chain saw only as necessary for construction and with approval of the Engineer. Cost of tree trimming to be included in bid item "Site Clearing"

Baseline = CL 27th St. N.



Saw cut, remove and replace 2' existing pavement as shown. To be incidental to "Site Restoration".

Sta 0+48.60, Begin construction of AC Pavement 5" (3" Bit Base) W/ Crushed Rock Base 5" and 5' Wide Concrete Sidewalk 4". Begin O.C.A. Number 766449

Adjust Valve Box to match proposed grades.

Sta. 0+48.60 to Sta. 6+00.00 Area south of curb shall be sodded as indicated on erosion control plan.

Adjust Fire Hydrant From Elev. = 1401.66 To Elev. = 1400.66
 Adjust Valve Box From Elev. = 1402.35 To Elev. = 1400.85

Sta 3+74.36, 14.25' Rt. Install subdivision benchmark (Flat survey marker No. 8134-08 3" top diameter) in top of curb. Cost shall be incidental to L.F. Concrete C & G, Comb. Type 2 (3-5/8")

Adjust water meter top elevation to match proposed elevation. Elev. = 1399.80

Install new valve box over existing 12" valve. Elev. = 1399.40 Cost incidental to bid item Valve Box Adjusted.

Subdivision Bench Marks

Street & Station	Location Description	Elevation
27th St. N, 3+74.36, 14.25' Rt.	Adjacent to Fire Hydrant on south side of 27th St. S., ~226' west of west PL of Firefly Way Addition.	

WATER VALVE LOCATION TABLE

VALVE NUMBER	STREET	BASILINE STATION	OFFSET DISTANCE	OFFSET DIRECTION
V1	27th St. N.	3+74.36	23'	Rt.

Paving contractor will be responsible to operate all water valves on the project, in the presence of the inspector, to ensure accessibility to the valves, and that all valves (except blowoffs) are left in the "ON" position when the project is completed.

Baughman Company, P.A.
 ENGINEERING, PLANNING, ARCHITECTURE
 11500 WILSON ROAD, SUITE 100, FARMINGTON, CT 06031
 203.633.1100
 www.baughmancompany.com
 Date: 02/19

FIREFLY WAY ADD. PH. 2
27TH ST. N.
 STREET IMPROVEMENTS