

**BENCHMARKS:**  
**BM#1:** RR spike in high line pole, 40' west and 30' south of Lot 60, Block D, Firefly Way Addition.  
 Elev. = 1399.54 NAVD88

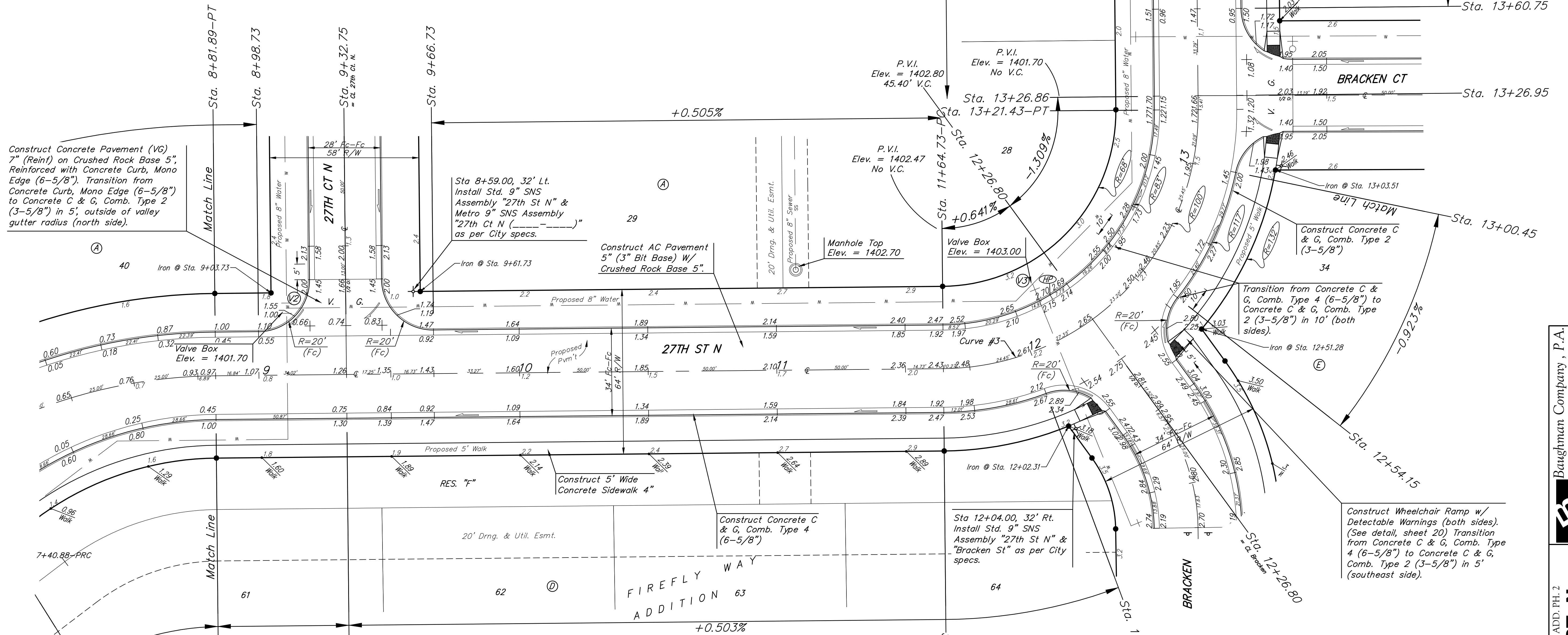
**BM#2:** Benchmark disc in top of curb, adjacent to fire hydrant 15' south of SE corner of Lot 2, Block C, Firefly Way Addition.  
 Elev. = 1396.95 NAVD88

**WATER VALVE LOCATION TABLE**

VALVE NUMBER	STREET	BASELINE STATION	OFFSET DISTANCE	OFFSET DIRECTION
V2	27th St. N.	9+09.74	26.00'	Lt.
V3	27th St. N.	12+13.15	24.04'	Lt.

Paving contractor will be responsible to operate all water valves on the project, in the presence of the inspector, to ensure accessibility to the valves, and that all valves (except blowoffs) are left in the "ON" position when the project is completed.

Baseline = CL 27th St. N.



Construct Concrete Pavement (VG) 7" (Reint) on Crushed Rock Base 5", Reinforced with Concrete Curb, Mono Edge (6-5/8") to Concrete C & G, Comb. Type 2 (3-5/8") in 5'; outside of valley gutter radius (north side).

Sta 8+59.00, 32' Lt. Install Std. 9" SNS Assembly "27th St N" & Metro 9" SNS Assembly "27th Ct N (---)" as per City specs.

Construct AC Pavement 5" (3" Bit Base) W/ Crushed Rock Base 5".

Construct Concrete C & G, Comb. Type 2 (3-5/8")

Transition from Concrete C & G, Comb. Type 4 (6-5/8") to Concrete C & G, Comb. Type 2 (3-5/8") in 10' (both sides).

Construct Wheelchair Ramp w/ Detectable Warnings (both sides). (See detail, sheet 20) Transition from Concrete C & G, Comb. Type 4 (6-5/8") to Concrete C & G, Comb. Type 2 (3-5/8") in 5' (southeast side).

Curve #3  
 Curve Data Based on Centerline  
 Rad. = 100' Delta = 90°00'00" Tangent = 100.00'  
 Arc = 156.70' L.C. = 141.42' Def./Ft. = 17.23038 Min.

Station	Arc	Face Chord Lengths		Defl.	Total Defl.
		8' Left	8' Right		
11+64.73	-	-	-	0°00'00"	0°00'00"
11+75.00	10.27'	7.72'	12.86'	2°56'57"	2°56'57"
11+99.45	24.45'	18.34'	30.56'	7°01'17"	9°58'14"
12+00.00	0.55'	0.41'	0.69'	0°09'29"	10°07'43"
12+25.00	25.00'	18.75'	31.24'	7°10'45"	17°18'28"
12+26.80	1.80'	1.35'	2.26'	0°31'01"	17°49'29"
12+50.00	23.20'	17.40'	29.00'	6°39'45"	24°29'14"
12+54.15	4.15'	3.12'	5.20'	1°11'30"	25°40'44"
12+75.00	20.85'	15.65'	26.08'	5°59'16"	31°40'00"
13+00.00	25.00'	18.75'	31.24'	7°10'45"	38°50'45"
13+00.45	0.45'	0.34'	0.56'	0°07'45"	38°58'30"
13+21.43	20.98'	15.74'	26.24'	6°01'30"	45°00'00"