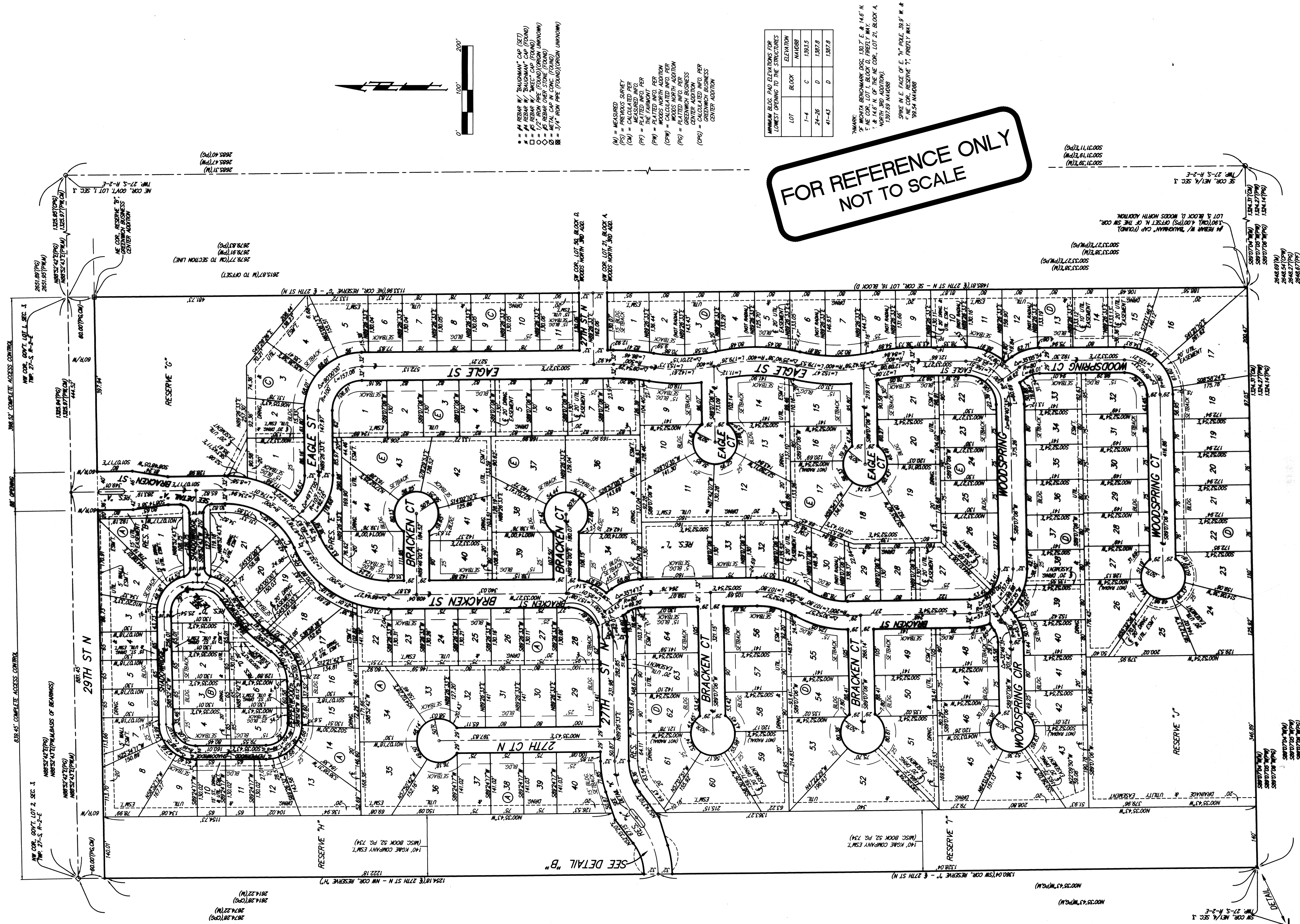


# FIRELY WAY AN ADDITION TO WICHITA, SEDGWICK COUNTY, KANSAS



FOR REFERENCE ONLY  
NOT TO SCALE

- = 4" REBAR W/ BAUGHMAN CAP (SET)
  - = 4" REBAR W/ BAUGHMAN CAP (FOUND)
  - = 4" REBAR W/ WELDED CAP (FOUND)
  - ◇ = 4" REBAR OVER STONE (FOUND)
  - = METAL CAP IN CONC (FOUND)
  - ⊞ = 3/4" IRON PIPE (FOUND)(ORIGIN UNKNOWN)
- (M) = MEASURED
  - (P) = PREVIOUS SURVEY
  - (C) = CALCULATED PER
  - (R) = PLATTED INFO PER THE PLATTMENT
  - (PM) = PLATTED INFO PER WOODS NORTH ADDITION
  - (PO) = CALCULATED INFO PER WOODS NORTH ADDITION
  - (P) = PLATTED INFO PER CENTER ADDITION
  - (CP) = CALCULATED INFO PER GREENWICH BUSINESS CENTER ADDITION

LOT	BLOCK	ELEVATION
1-4	C	1393.5
24-26	D	1397.8
41-43	D	1397.8

MARK: WICHITA BOUNDARY DIS: 139.7' E & 14.6' N. NE COR. LOT 1, BLOCK D, FIRELY WAY. 1' & 14.6' N. OF THE NE COR. LOT 21, BLOCK A, NORTH 3RD ADDITION. 139.69' N44.98'

SPINE IN E. FACE OF E. 7/4" PALE 39.9' W. & NE COR. RESERVE T, FIRELY WAY. 39.54' N44.98'

**NOTE:** This site plan has been developed for the plat and all drainage easements, rights-of-way or reserves shall remain of establishment grades or as modified with the approval of the applicable city or county engineer and shall be subject to the requirements of the applicable code.