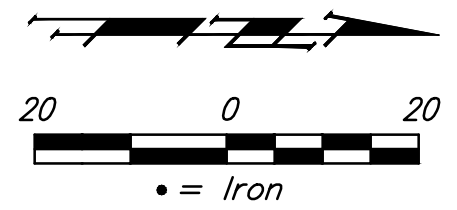


BENCHMARKS:
BM#1: RR spike in high line pole, 40' west and 30' south of Lot 60, Block D, Firefly Way Addition.
 Elev. = 1399.54 NAVD88

BM#2: Benchmark disc in top of curb, adjacent to fire hydrant 15' south of SE corner of Lot 2, Block C, Firefly Way Addition.
 Elev. = 1396.95 NAVD88

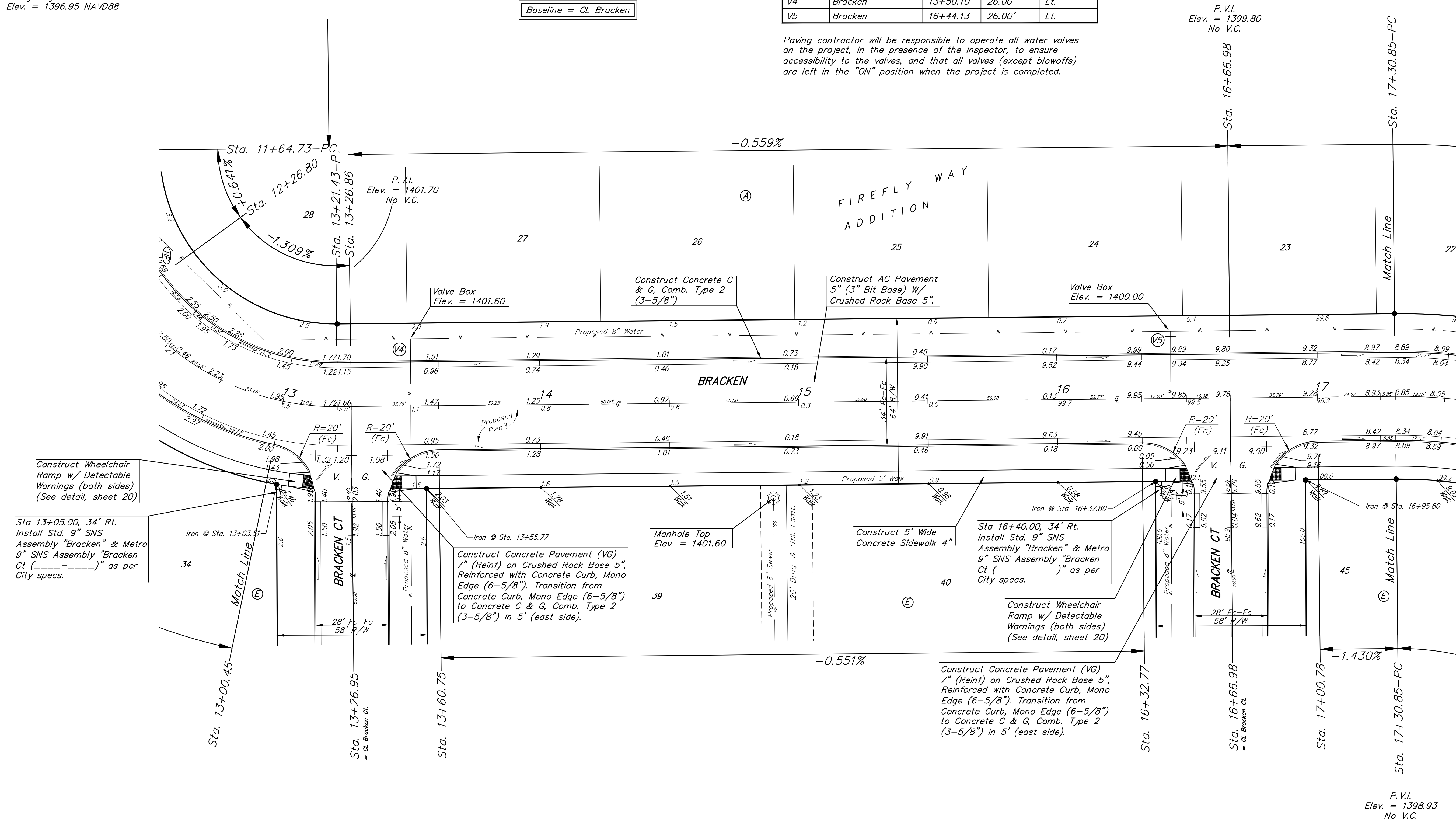


WATER VALVE LOCATION TABLE

VALVE NUMBER	STREET	BASELINE STATION	OFFSET DISTANCE	OFFSET DIRECTION
V4	Bracken	13+50.10	26.00'	Lt.
V5	Bracken	16+44.13	26.00'	Lt.

Paving contractor will be responsible to operate all water valves on the project, in the presence of the inspector, to ensure accessibility to the valves, and that all valves (except blowoffs) are left in the "ON" position when the project is completed.

Baseline = CL Bracken



Construct Wheelchair Ramp w/ Detectable Warnings (both sides) (See detail, sheet 20)

Sta 13+05.00, 34' Rt. Install Std. 9" SNS Assembly "Bracken" & Metro 9" SNS Assembly "Bracken Ct (-----)" as per City specs.

Construct Concrete Pavement (VG) 7" (Reinf) on Crushed Rock Base 5", Reinforced with Concrete Curb, Mono Edge (6-5/8"). Transition from Concrete Curb, Mono Edge (6-5/8") to Concrete C & G, Comb. Type 2 (3-5/8") in 5' (east side).

Sta 16+40.00, 34' Rt. Install Std. 9" SNS Assembly "Bracken" & Metro 9" SNS Assembly "Bracken Ct (-----)" as per City specs.

Construct Wheelchair Ramp w/ Detectable Warnings (both sides) (See detail, sheet 20)

Construct Concrete Pavement (VG) 7" (Reinf) on Crushed Rock Base 5", Reinforced with Concrete Curb, Mono Edge (6-5/8"). Transition from Concrete Curb, Mono Edge (6-5/8") to Concrete C & G, Comb. Type 2 (3-5/8") in 5' (east side).

Baughman Company, P.A.
 P.L.L.C.
 ENGINEERING, PLANNING, ARCHITECTURE
 1000 W. 10th St., Suite 100
 Oklahoma City, Oklahoma 73101
 Phone: (405) 233-1100
 Fax: (405) 233-1101
 www.baughman.com

FIREFLY WAY ADD. PH. 2
BRACKEN
 STREET IMPROVEMENTS