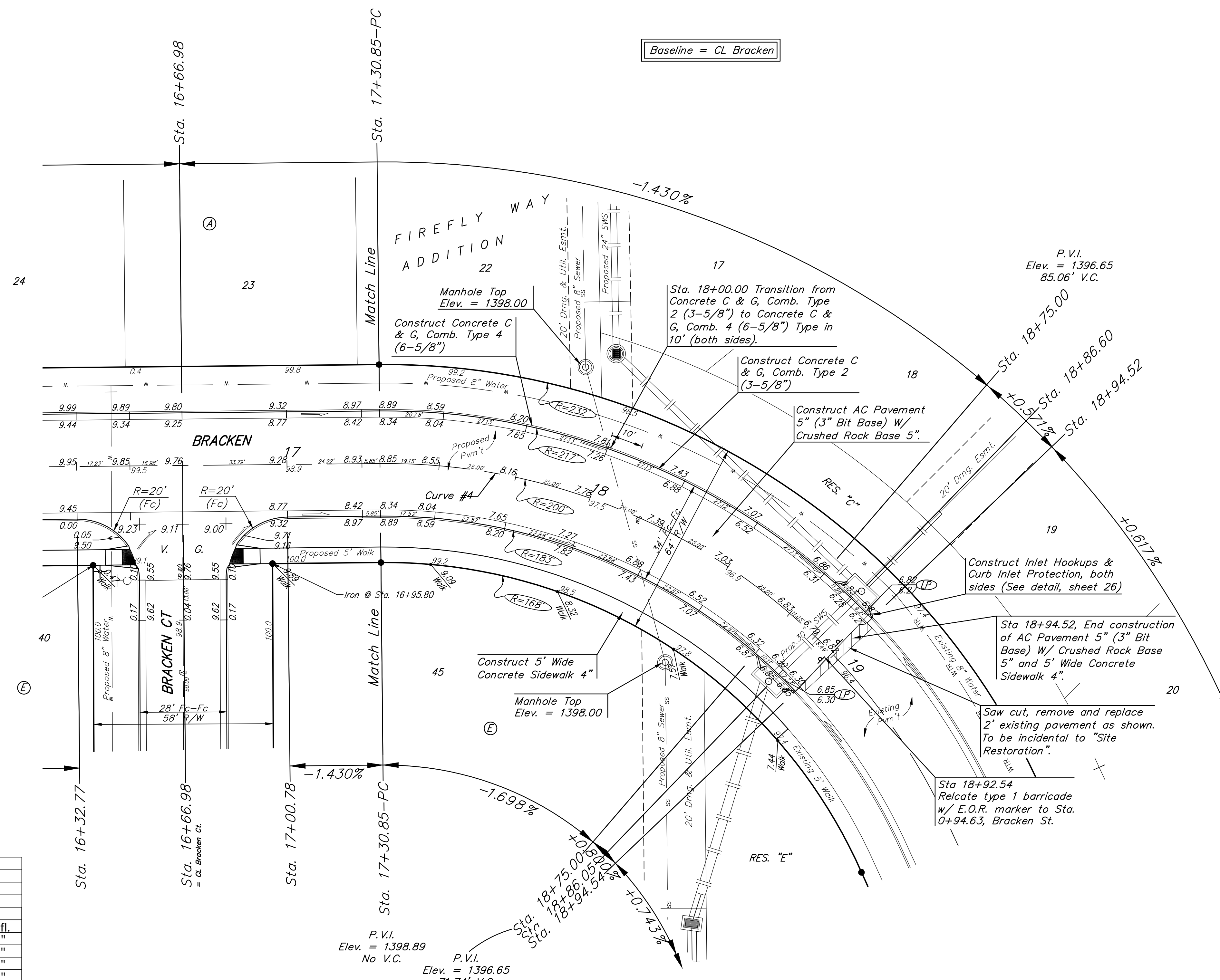
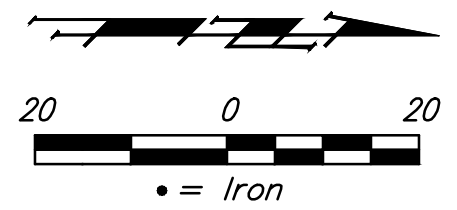


**BENCHMARKS:**  
**BM#1:** RR spike in high line pole, 40' west and 30' south of Lot 60, Block D, Firefly Way Addition.  
 Elev. = 1399.54 NAVD88

**BM#2:** Benchmark disc in top of curb, adjacent to fire hydrant 15' south of SE corner of Lot 2, Block C, Firefly Way Addition.  
 Elev. = 1396.95 NAVD88



Baseline = CL Bracken

Curve #4					
Curve Data Based on Centerline					
Rad. = 200' Delta = 66°44'27" Tangent = 131.73'					
Arc = 232.97' L.C. = 220.02' Def./Ft. = 8.59435 Min.					
Face Chord Lengths					
Station	Arc	8' Left	8' Right	Defl.	Total Defl.
17+30.85	-	-	-	0°00'00"	0°00'00"
17+50.00	19.15'	21.54'	16.75'	2°44'35"	2°44'35"
17+75.00	25.00'	28.11'	21.86'	3°34'51"	6°19'26"
18+00.00	25.00'	28.11'	21.86'	3°34'52"	9°54'18"
18+25.00	25.00'	28.11'	21.86'	3°34'51"	13°29'09"
18+50.00	25.00'	28.11'	21.86'	3°34'52"	17°04'01"
18+75.00	25.00'	28.11'	21.86'	3°34'52"	20°38'53"
18+86.05	11.05'	12.43'	9.67'	1°34'58"	22°13'51"
18+94.54	8.49'	9.55'	7.43'	1°12'58"	23°26'49"
19+00.00	5.46'	6.14'	4.78'	0°46'55"	24°13'44"
19+25.00	25.00'	28.11'	21.86'	3°34'52"	27°48'36"
19+50.00	25.00'	28.11'	21.86'	3°34'51"	31°23'27"
19+63.82	13.82'	15.54'	12.09'	1°58'46"	33°22'13"

Baughman Company, P.A.  
 ENGINEERING ARCHITECTURE  
 1415 W. WILSON ST. #211 PHOENIX, AZ 85015  
 P: 602.998.8888 F: 602.998.8889  
 www.baughmanpa.com  
 Date: 02/19

FIREFLY WAY ADD. PH. 2  
**BRACKEN**  
 STREET IMPROVEMENTS