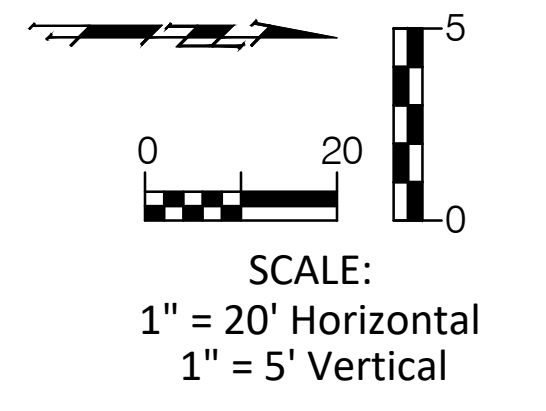
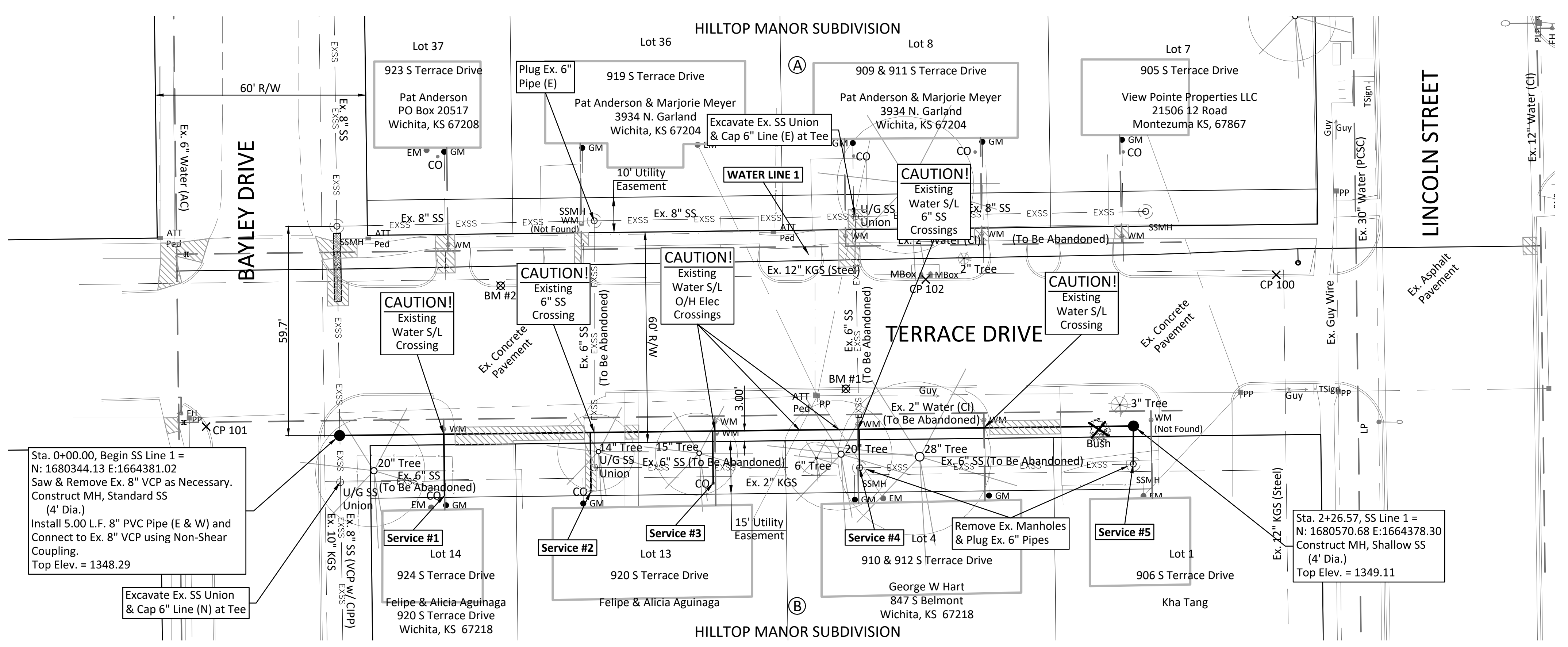


BENCHMARK:
 BM #1 - Chiseled "X" on the Top of the East Curb of Terrace Drive
 8' North of Power Pole.
 Elev. = 1348.32 (NAVD 88)
 BM #2 - Chiseled "X" on the Top of the West Curb of Terrace Drive
 in Front of 923 East Terrace Drive.
 Elev. = 1347.72 (NAVD 88)



Note:
 Pavement, Sidewalks, Etc.
 To Be Removed Are
 Indicated By:

Sta. 0+00.00, Begin SS Line 1 =
 N: 1680344.13 E:1664381.02
 Saw & Remove Ex. 8" VCP as Necessary.
 Construct MH, Standard SS
 (4' Dia.)
 Install 5.00 L.F. 8" PVC Pipe (E & W)
 and Connect to Ex. 8" VCP using Non-Shear
 Coupling.
 Top Elev. = 1348.29

Sta. 2+26.57, SS Line 1 =
 N: 1680570.68 E:1664378.30
 Construct MH, Shallow SS
 (4' Dia.)
 Top Elev. = 1349.11

All Costs Associated with the Plugging and
 Capping of the Existing 6" SS Lines Shall be
 SUBSIDIARY to the Bid Item "Manhole Removed".

Note:
 Trees/Shrubs to be
 removed are marked thus:

Cost to be SUBSIDIARY to
 "Site Clearing" Bid Item.

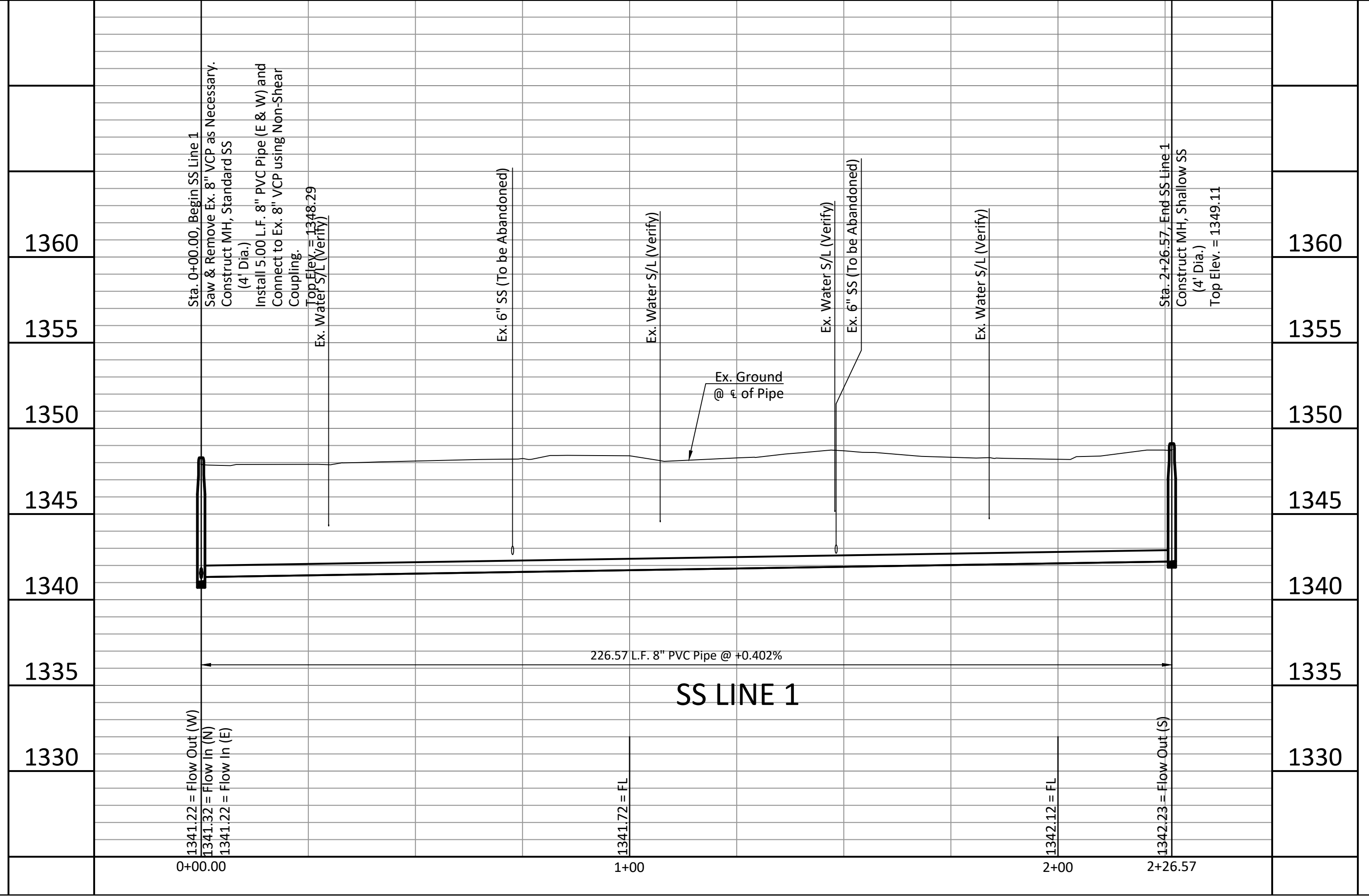


SS LINE 1

SEWER SERVICE TABLE

NUMBER	TYPE	LOCATION			FOR INFORMATION ONLY		
		LOT NO.	BLOCK NO.	LINE NO.	DIRECTION/ STATION	VERTICAL	HORIZONTAL
1	4" Stub	14	B	1	0+29.77/Rt.	2'	18'
2*	4" Stub	13	B	1	0+71.57/Rt.	2'	18'
3	4" Stub	13	B	1	1+06.46/Rt.	2'	16'
4	4" Stub	4	B	1	1+48.26/Rt.	2'	12'
5	4" MH Stub	1	B	1	2+26.57/Rt.	2'	12'

*The south 4" Service to Lot 13, Block B can be moved south to avoid damaging to the existing tree. The Contractor shall coordinate with the Engineer and use fittings as necessary to adjust the service line. No additional compensation will be allowed for moving the service.



BAUGHMAN COMPANY
 315 Ellis St. Wichita, KS 67211 316-262-7271
 baughmanco.com

CAPITAL IMPROVEMENT PROJECT
SANITARY SEWER LINE 1
 Sta. 0+00.00 - Sta. 2+26.57
 TERRACE DRIVE SANITARY SEWER & WATER IMPROVEMENTS

PROJECT NUMBER: 468-85354
 INTERNAL NUMBER: 18-07-E050
 DESIGN: TPV
 DRAWN: TPV
 DATE: Feb. 2019
 SHEET: 3 OF 15