

BENCHMARK:
 BM #1 - Chiseled "X" on the Top of the East Curb of Terrace Drive
 7' North of Power Pole.
 Elev. = 1348.32 (NAVD 88)
 BM #2 - Chiseled "X" on the Top of the West Curb of Terrace Drive
 in Front of 923 East Terrace Drive.
 Elev. = 1347.72 (NAVD 88)

Remove & Replace Ex. Detectable Warning Wheelchair Ramp as Necessary. All Cost Shall be SUBSIDIARY to the Bid Item "Concrete Sidewalk Removed & Replaced".

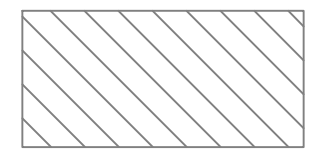
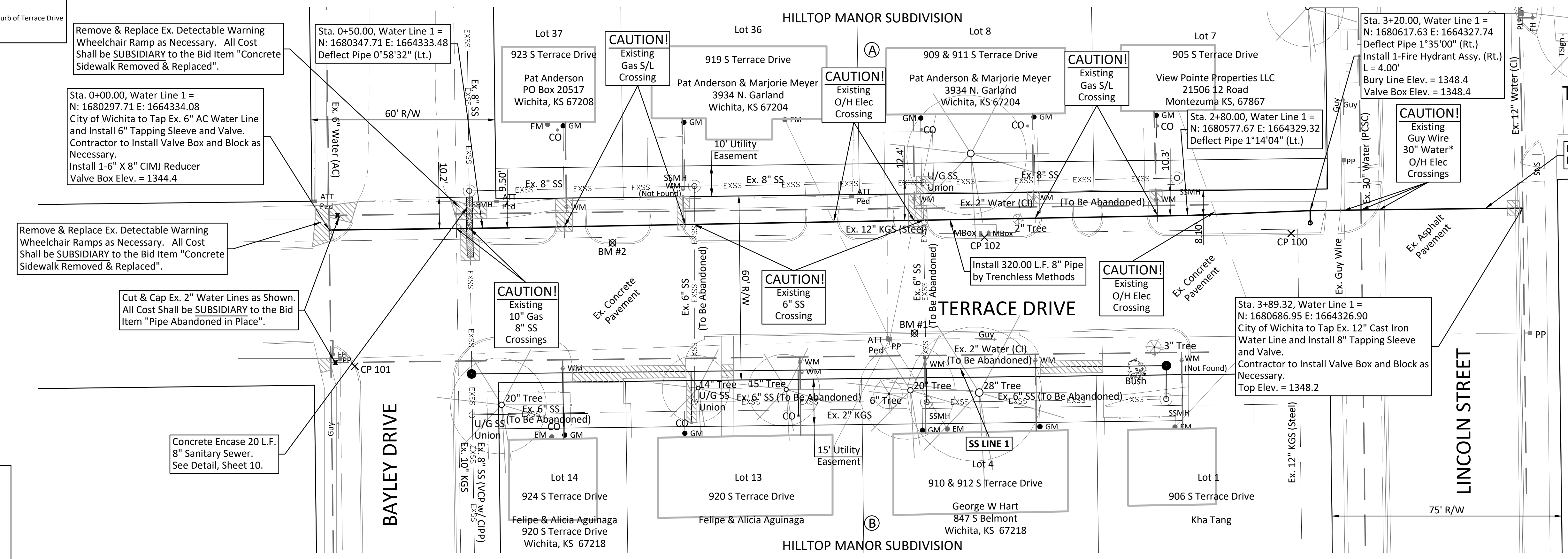
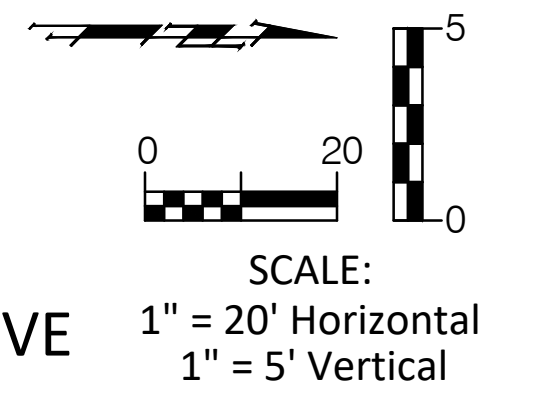
Sta. 0+00.00, Water Line 1 = N: 1680297.71 E: 1664334.08
 City of Wichita to Tap Ex. 6" AC Water Line and Install 6" Tapping Sleeve and Valve. Contractor to Install Valve Box and Block as Necessary.
 Install 1-6" X 8" CIMJ Reducer
 Valve Box Elev. = 1344.4

Remove & Replace Ex. Detectable Warning Wheelchair Ramps as Necessary. All Cost Shall be SUBSIDIARY to the Bid Item "Concrete Sidewalk Removed & Replaced".

Cut & Cap Ex. 2" Water Lines as Shown. All Cost Shall be SUBSIDIARY to the Bid Item "Pipe Abandoned in Place".

Concrete Encase 20 L.F. 8" Sanitary Sewer. See Detail, Sheet 10.

Note:
 Pavement, Sidewalks, Etc. To Be Removed Are Indicated By:

Install 69.32 L.F. 8" Pipe by Trenchless Methods

The Contractor Shall be Required to Coordinate with the Project Inspector while Crossing the Existing 30" PCSC Water Line.

All Water Service Lines to be Installed to Provide a Minimum of 2' of Vertical Clearance from all Sanitary Sewer Lines.

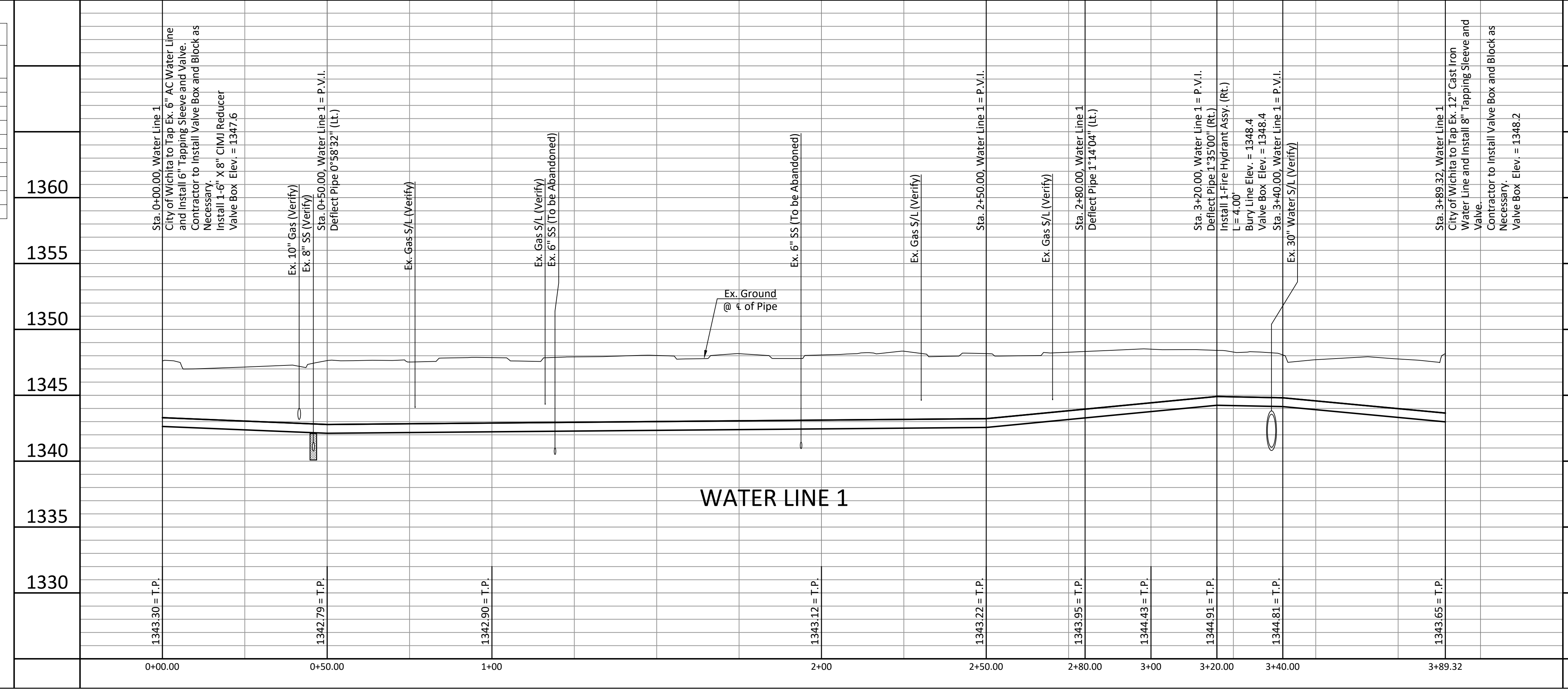
The Existing 2" Water Lines on Either Side of Terrace Drive Shall be Abandoned in Place per City of Wichita Specifications. All Cost Shall be SUBSIDIARY to the Bid Item "Pipe Abandoned in Place".



NUMBER	LOCATION				FOR INFO ONLY APPROX. LENGTH OF PIPE
	LOT NO.	BLOCK NO.	LINE NO.	STATION/DIRECTION	
1	14	B	1	0+65/Rt.	60'
2	37	A	1	0+67/Lt.	16'
3	36	A	1	1+06/Lt.	16'
4	13	B	1	1+63/Rt.	60'
5	8	A	1	1+81/Lt.	17'
6	4	B	1	2+04/Rt.	60'
7	8	A	1	2+20/Lt.	17'
8	4	B	1	2+20/Rt.	60'
9	7	A	1	2+60/Lt.	17'
10	1	B	1	2+67/Rt.	60'

The Proposed Water Meter Stations have been adjusted to provide 10' of clearance from the existing sewer service lines. The Contractor shall be required to install 1" service line and adaptors as necessary to tie into the existing water service line.

The existing water meters shall be reused in the new 1" water meter setter. The Contractor is responsible for any water meter adaptors for the installation of the water meter.



STATION	DESCRIPTION	STATION	DESCRIPTION
0+00.00	Sta. 0+00.00, Water Line 1 = N: 1680297.71 E: 1664334.08 City of Wichita to Tap Ex. 6" AC Water Line and Install 6" Tapping Sleeve and Valve. Contractor to Install Valve Box and Block as Necessary. Install 1-6" X 8" CIMJ Reducer Valve Box Elev. = 1344.4	1330	
0+50.00	Sta. 0+50.00, Water Line 1 = P.V.I. Deflect Pipe 0"58'32" (Lt.)	1335	
1+00	Ex. Gas S/L (Verify)	1340	
1+342.79 = T.P.	Ex. 10" Gas (Verify)	1345	
1+342.90 = T.P.	Ex. 8" SS (Verify)	1350	
2+00	Ex. Gas S/L (Verify)	1355	
2+50.00	Sta. 2+50.00, Water Line 1 = P.V.I.	1360	
2+80.00	Sta. 2+80.00, Water Line 1 = N: 1680577.67 E: 1664329.32 Deflect Pipe 1"14'04" (Lt.)		
3+00	Sta. 3+00.00, Water Line 1 = N: 1680577.67 E: 1664329.32 Deflect Pipe 1"14'04" (Lt.)		
3+20.00	Sta. 3+20.00, Water Line 1 = N: 1680617.63 E: 1664327.74 Deflect Pipe 1"35'00" (Rt.) L = 4.00' Install 1-Fire Hydrant Assy. (Rt.) L = 4.00' Bury Line Elev. = 1348.4 Valve Box Elev. = 1348.4		
3+40.00	Sta. 3+40.00, Water Line 1 = P.V.I.		
3+89.32	Sta. 3+89.32, Water Line 1 = N: 1680686.95 E: 1664326.90 City of Wichita to Tap Ex. 12" Cast Iron Water Line and Install 8" Tapping Sleeve and Valve. Contractor to Install Valve Box and Block as Necessary. Valve Box Elev. = 1348.2		

BAUGHMAN COMPANY
 315 Ellis St. Wichita, KS 67211 316-262-7271
 BaughmanCo.com

TERRACE DRIVE WATER LINE
 Sta. 0+00.00 - Sta. 3+89.32

CAPITAL IMPROVEMENT PROJECT
 PROJECT NUMBER: 448-90923
 INTERNAL NUMBER: 18-07-E050
 DESIGN: TPV
 DRAWN: TPV
 DATE: Feb. 2019
 SHEET 4 OF 15