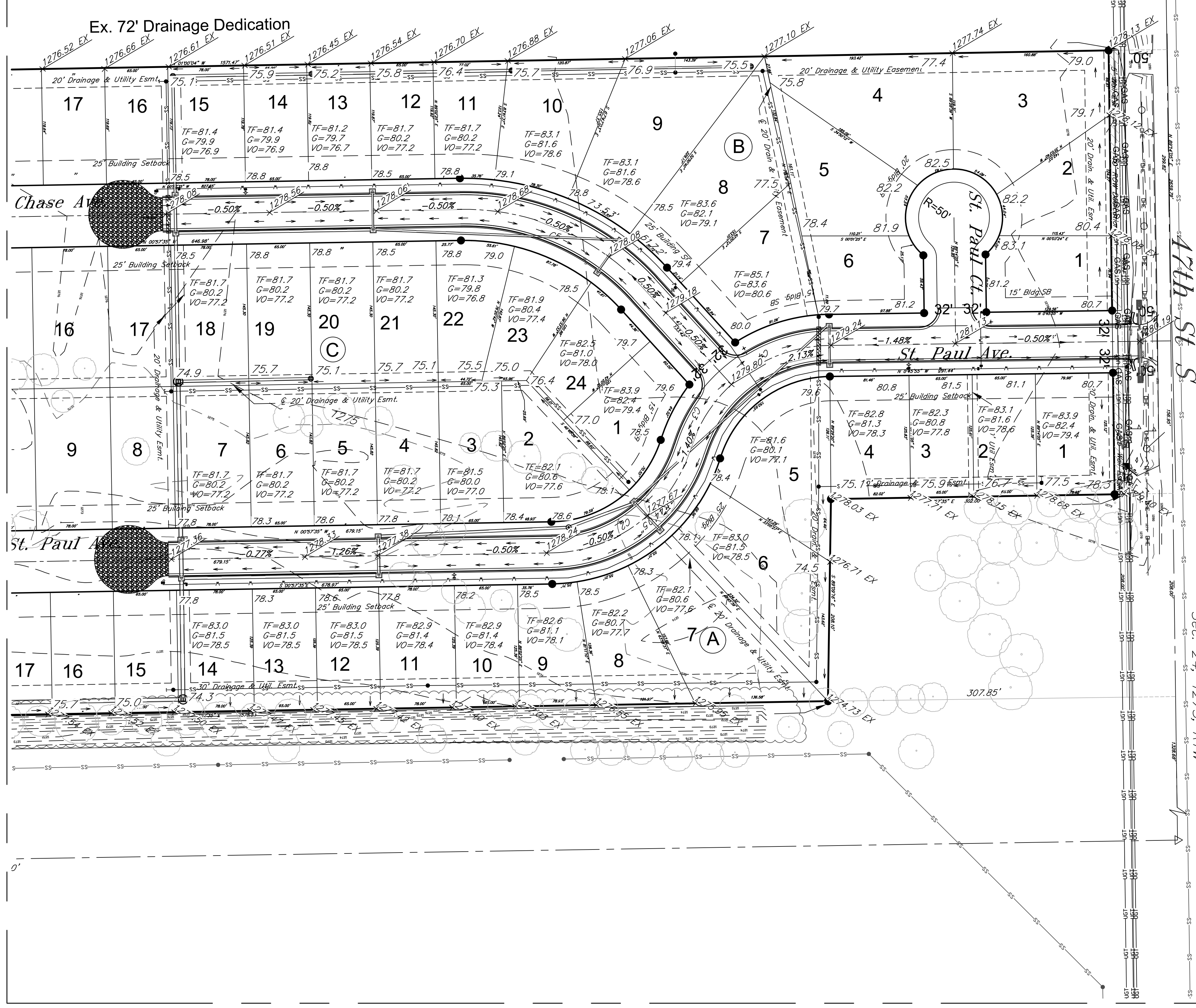
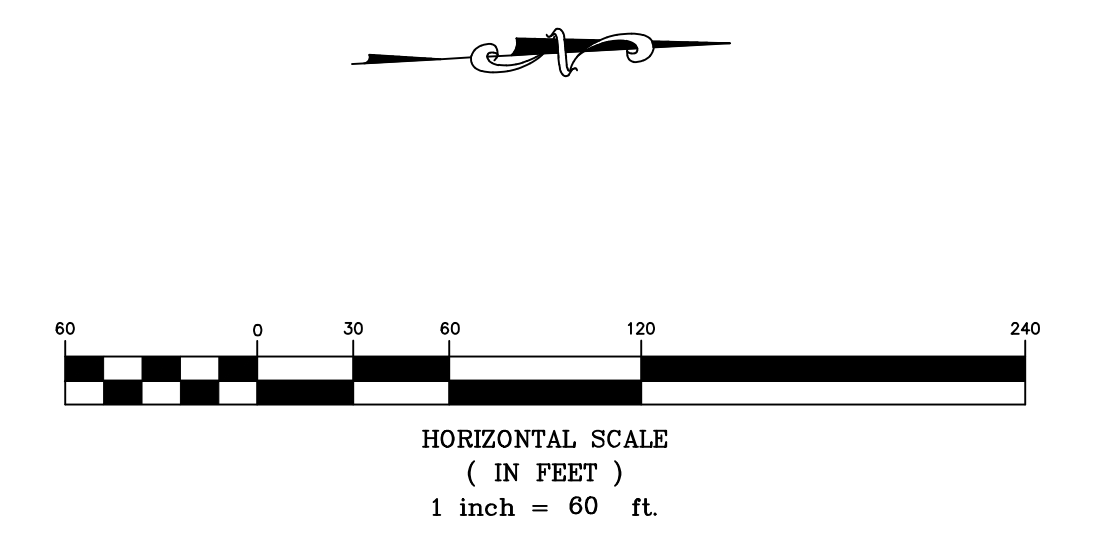


Note:  
 This sheet is For Information Only.  
 Mass Grading will be completed in  
 SWD #443 Companion Project 468-85360  
 By Others.



N. 1/16 Corner NE 1/4,  
 Sec. 24, T27S, R1W  
 1/2" Rebar (found),  
 NE Corner NE 1/4,  
 Sec. 24, T27S, R11



<b>Fox Run Addition</b> <b>Lot Grading Plan</b> Wichita, Kansas			
PROJECT NUMBER <b>472-85481</b>		SHEET <b>9.0</b>	
KEMILLER ENGINEERING PA 117 E. Lewis, Wichita, KS 67202 (316)264-0242	KEM NO. 17063	FILE KM	DATE 07/2018 REVISED

JANUARY 24, 2018