

CONTRACTOR TO INSTALL SIDEWALK AND MATCH FINAL GRADE AS CONSTRUCTED BY LAKE CONTRACTOR. PAVING CONTRACTOR TO COORDINATE AS REQUIRED.

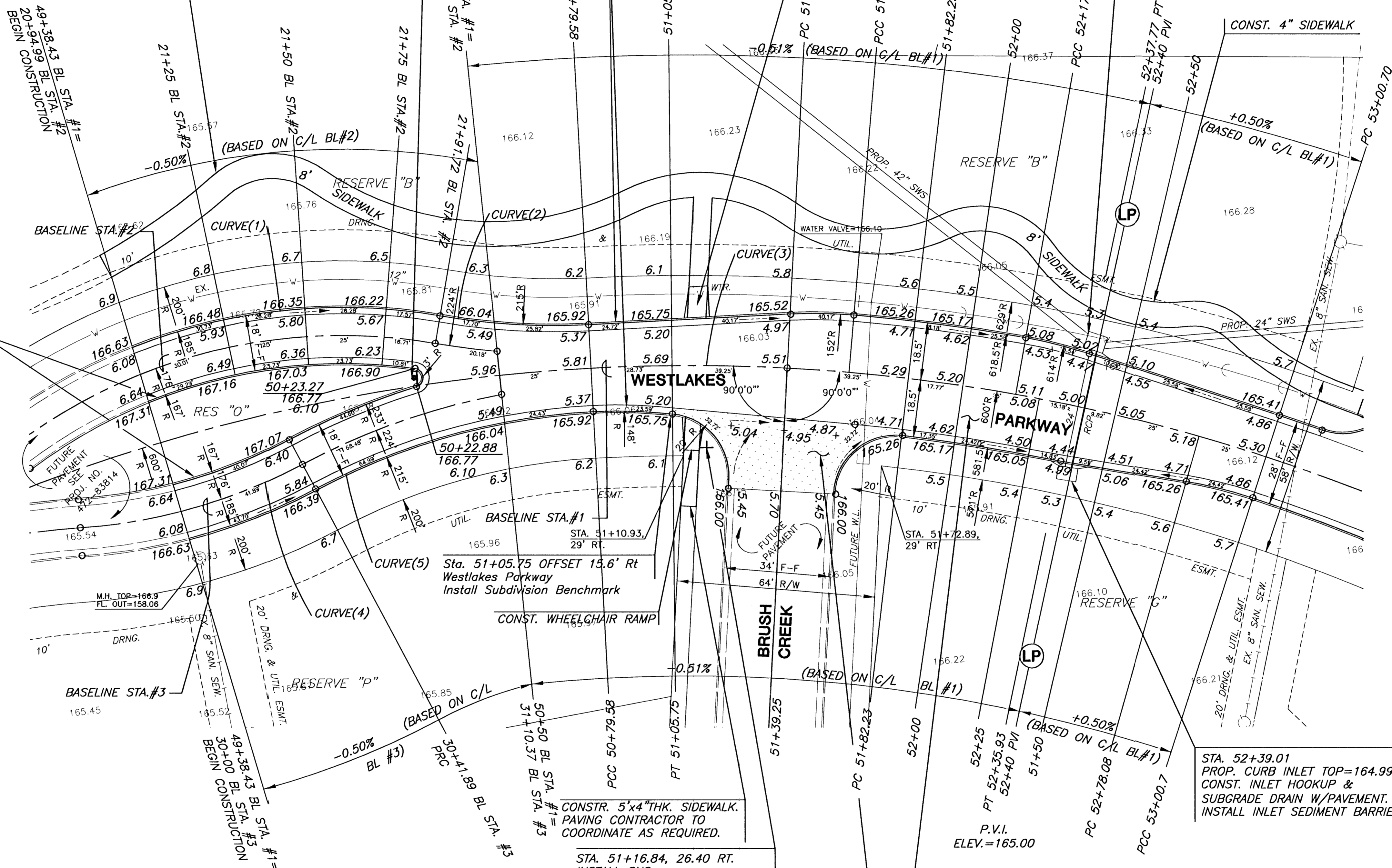
STA. 50+22.43, BL#1, 2.67 RT. INSTALL SIGN (R4-7 & OM-1)

CONST. COMBINED CURB AND GUTTER, FULL 6 5/8"

CONST. WHEELCHAIR RAMP

STA. 52+39.01
PROP. CURB INLET TOP=165.02
CONST. INLET HOOKUP & SUBGRADE DRAIN W/PAVEMENT. INSTALL INLET SEDIMENT BARRIER.

CONST. NON-MOUNTABLE MEDIAN CURB AND GUTTER (8")



SUBDIVISION BENCH MARKS

NO.	STREET AND STATION	FROM CL	DESCRIPTION	ELEVATIONS
1	WESTLAKES PARKWAY, STA. 51+05.75	15.6' RT	TOP OF CURB AT END OF SW RETURN ON WESTLAKES PARKWAY	

NOTE: CONTRACTOR SHALL INSTALL SUBDIVISION BENCH MARKS ("FLAT SURVEY MARKERS NO. 8134-08 3" TOP DIAMETER" PROVIDED BY KANSAS BLUE PRINT CO., INC.) COSTS TO BE CONSIDERED SUBSIDIARY TO CONSTRUCTION OF COMBINED CURB AND GUTTER.

LEGEND
+ STREET SIGN & SIGN LOCATION (SEE SIGN ASSEMBLY TABLE FOR TYPE & STATION OF SIGN)

FOX RIDGE ADDITION

FOX RIDGE ADDITION
PROJECT NAME

WESTLAKES PARKWAY - ENTRY PHASE 2
SHEET TITLE

MKEC
ENGINEERING CONSULTANTS
411 N. WEBB ROAD
WICHITA, KS. 67206
316-684-9600

DK DESIGN BY. DM DRAWN BY. DK CHECKED BY.

JULY 2003 DATE. 99118E1 JOB NO. 7 / 23 SHEET/OF