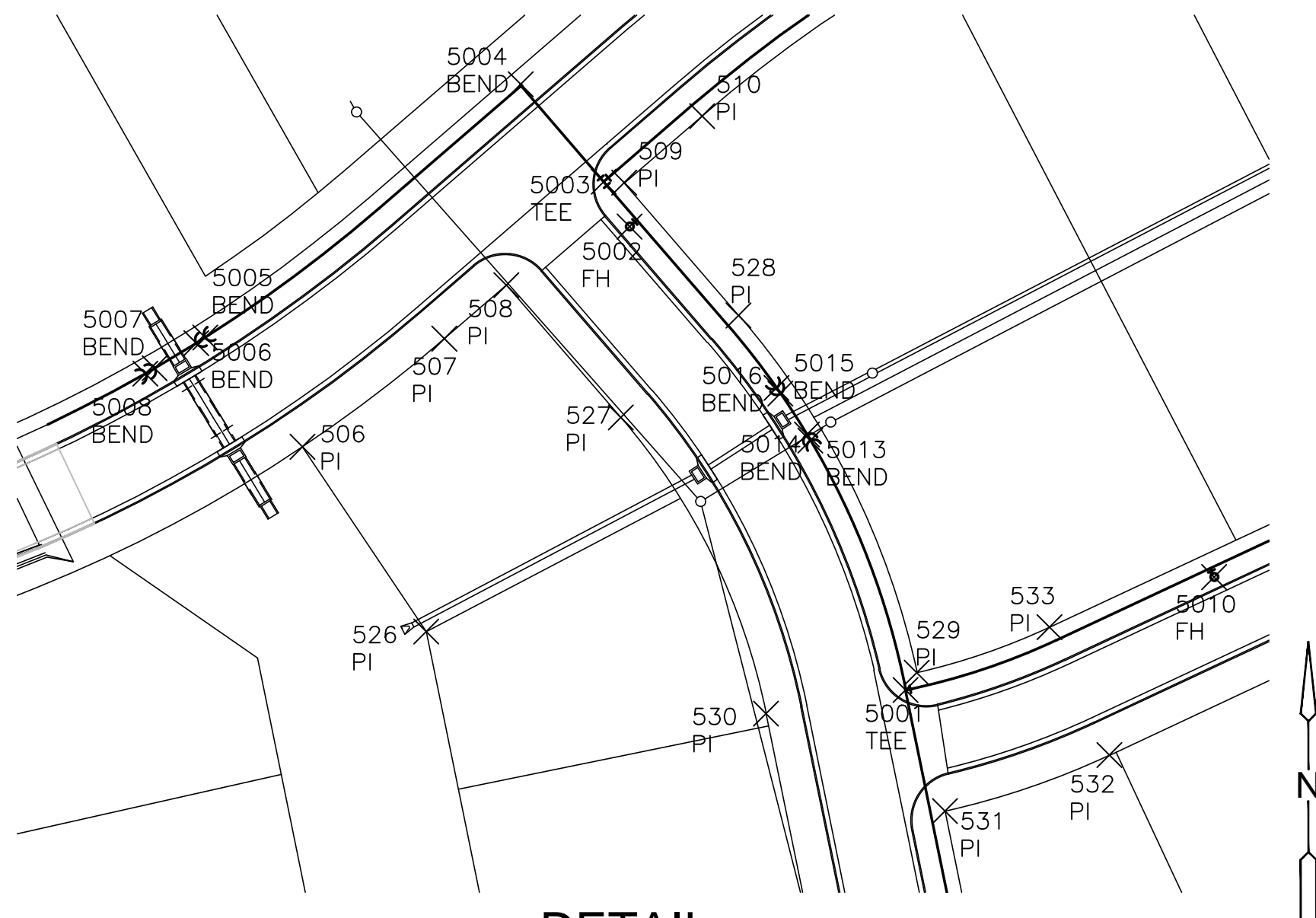
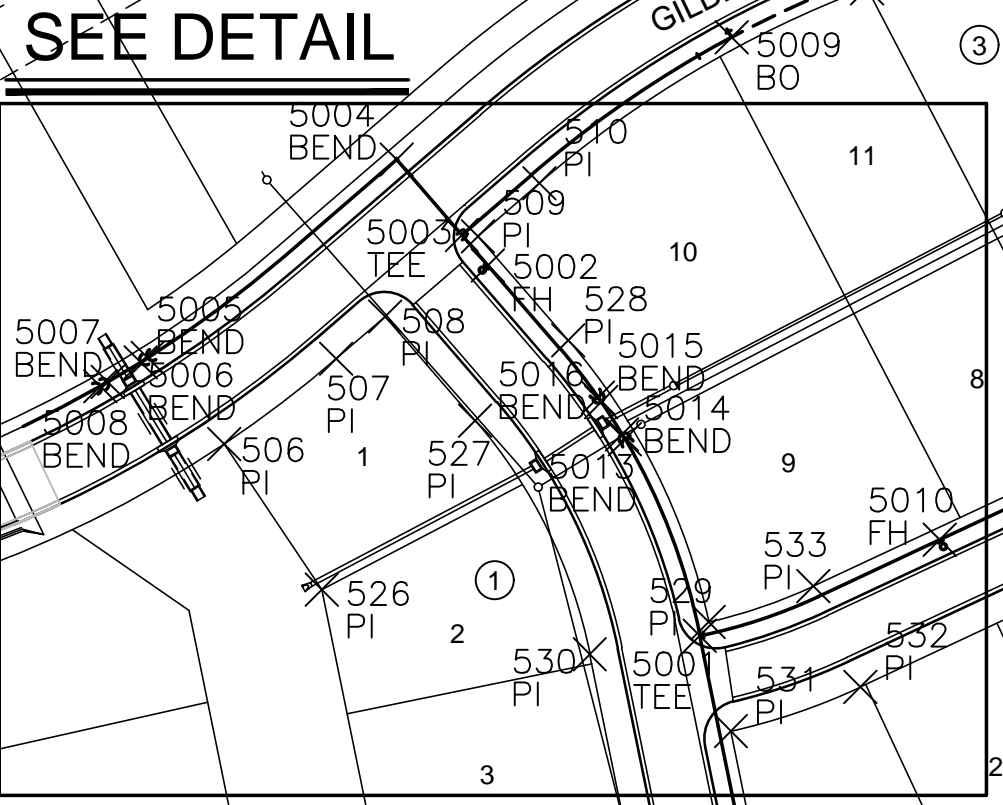
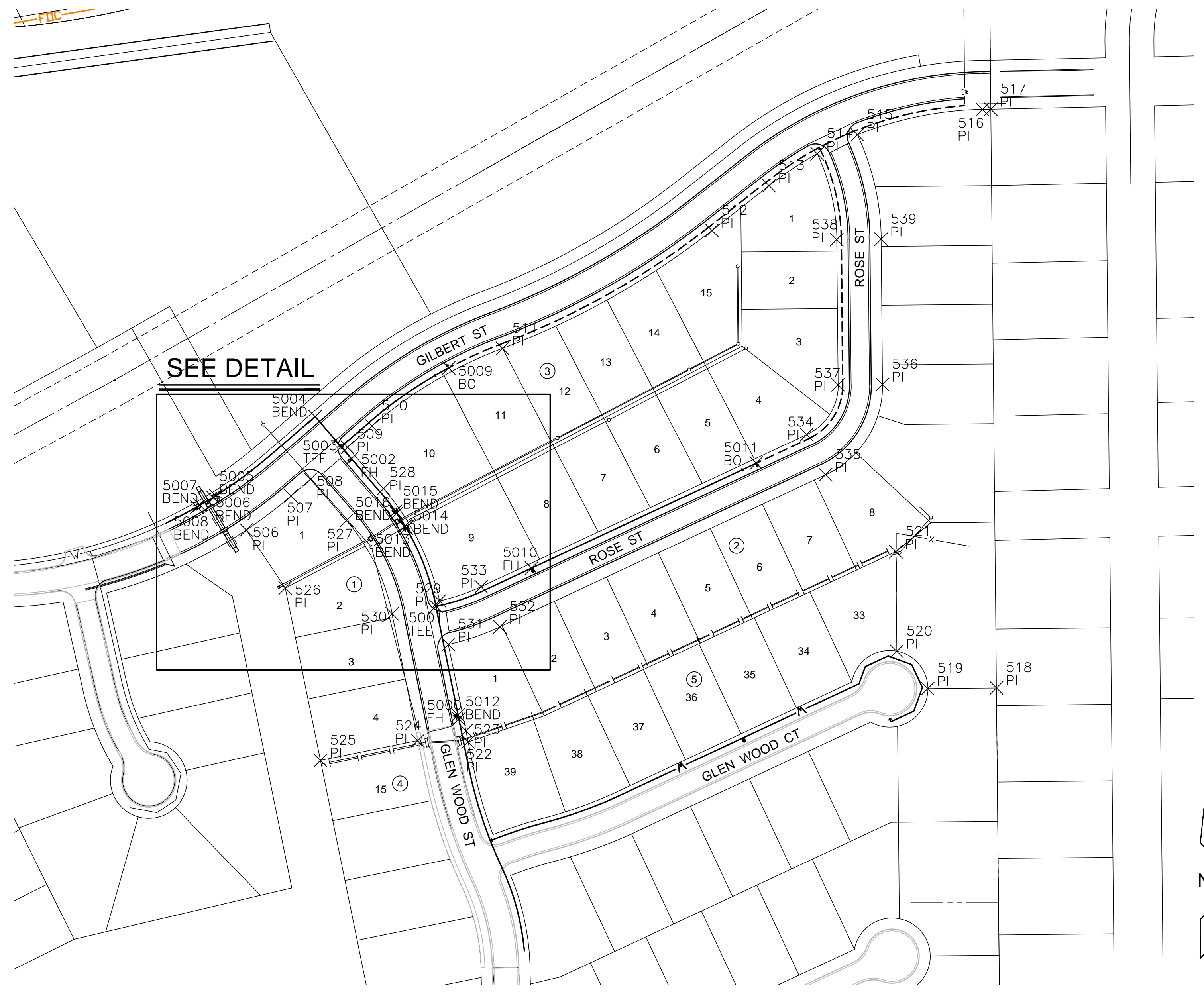
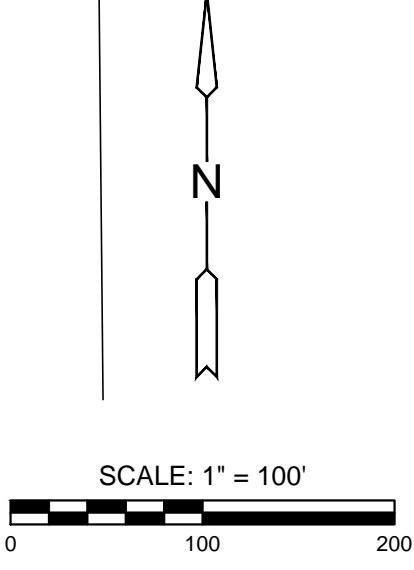


PLOTTED: Tuesday, March 26, 2019 @ 01:22PM
 J:\PROJECTS\2018\180100519_COUNTRY HOLLOW 2ND_18519 CAD\SHOTS\05_CIVIL\WTR\18519-05-3500.DWG



DETAIL
SCALE: 1"=60'



EVERY ATTEMPT HAS BEEN MADE TO INSURE ALL COORDINATE VALUES SHOWN ARE AN ACCURATE AND TRUE REPRESENTATION OF THE CURRENT PLANS. ALL VALUES ARE TO BE CONFIRMED WITH THE FINAL SIGNED PLAN SET BEFORE USE.

PLAT POINTS			
Point #	Northing	Easting	Desc.
506	1682478.64	1693456.22	PI
507	1682523.04	1693514.48	PI
508	1682545.02	1693539.94	PI
509	1682586.85	1693588.38	PI
510	1682614.43	1693620.33	PI
511	1682715.94	1693791.01	PI
512	1682870.14	1694064.66	PI
513	1682928.55	1694139.07	PI
514	1682970.29	1694202.16	PI
515	1682995.08	1694254.59	PI
516	1683028.30	1694418.10	PI
517	1683028.54	1694429.00	PI
518	1682272.19	1694436.34	PI
519	1682271.35	1694346.61	PI
520	1682319.97	1694306.16	PI
521	1682450.27	1694304.94	PI
522	1682201.69	1693746.03	PI

WATER POINTS			
Point #	Northing	Easting	Desc.
5000	1682236.60	1693732.79	FH
5001	1682378.76	1693703.80	TEE
5002	1682571.67	1693593.56	FH
5003	1682587.47	1693579.92	TEE
5004	1682626.83	1693545.93	BEND
5005	1682523.52	1693416.31	BEND
5006	1682521.19	1693412.62	BEND
5007	1682510.88	1693395.48	BEND
5008	1682508.71	1693391.70	BEND
5009	1682690.48	1693720.47	BO
5010	1682428.77	1693828.87	FH
5011	1682565.94	1694122.54	BO
5012	1682231.63	1693733.80	BEND
5013	1682481.18	1693664.77	BEND
5014	1682483.65	1693663.30	BEND
5015	1682500.47	1693652.47	BEND
5016	1682502.83	1693650.83	BEND

PLAT POINTS			
Point #	Northing	Easting	Desc.
523	1682216.17	1693743.08	PI
524	1682203.38	1693680.37	PI
525	1682177.40	1693552.99	PI
526	1682402.76	1693507.03	PI
527	1682490.72	1693586.82	PI
528	1682532.55	1693635.26	PI
529	1682385.90	1693708.44	PI
530	1682369.13	1693646.57	PI
531	1682329.07	1693720.05	PI
532	1682352.06	1693787.52	PI
533	1682404.61	1693762.97	PI
534	1682603.36	1694188.47	PI
535	1682550.81	1694213.01	PI
536	1682668.89	1694287.41	PI
537	1682668.35	1694229.41	PI
538	1682858.05	1694227.65	PI
539	1682858.59	1694285.64	PI

CONTROL POINTS

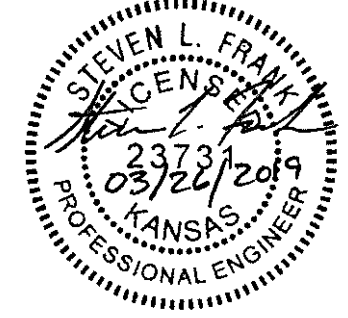
DATUM: THE HORIZONTAL DATUM IS BASED ON THE KANSAS COORDINATE SYSTEM OF 1983(2011), SOUTH ZONE. COORDINATES SHOWN HAVE BEEN MODIFIED TO THE GROUND USING A COMBINED ADJUSTMENT FACTOR OF 1.0001200144.

ALL ELEVATIONS SHOWN ARE BASED ON THE NAVD 88 VERTICAL DATUM.

CONTROL POINTS:

- CP2,
N:1682513.937 E:1694380.13 EL:1338.1
5/8 BAR 2" ALUM MKEC CAP
- CP3,
N:1682359.995 E:1693840.826 EL:1335.39
5/8 BAR 2" ALUM MKEC CAP
- CP4,
N:1683046.711 E: 1694574.106 EL:1325.059
CHISELED 'X'
- CP5,
N:1682775.750 E:1693768.393 EL:1336.853
5/8 BAR MKEC CLS39 CAP
- CP6,
N:1682391.904 E:1692962.388 EL:1338.797
CHISELED 'X'
- CP147,
N:1681902.856 E:1693826.772 EL:1330.88
5/8 BAR 2" ALUM MKEC CAP

NOTE: ALL CONTROL POINTS SHOWN HAVE ELEVATIONS ESTABLISHED BY DIFFERENTIAL LEVELING AND CAN BE USED AS TEMPORARY BENCHMARKS. WHEN USING A CONTROL POINT AS A TEMPORARY BENCHMARK, IT IS RECOMMENDED THAT CROSS-CHECKS BE MADE TO OTHER CONTROL POINTS OR BENCHMARKS TO CONFIRM ELEVATIONS PRIOR TO USE.



SANITARY SEWER PLANS FOR
COUNTRY HOLLOW 2ND ADDITION
 PHASE 1

©2019 MKEC Engineering All Rights Reserved www.mkec.com
 These drawings and their contents, including, but not limited to, all concepts, designs, & ideas are the exclusive property of MKEC Engineering (MKEC), and may not be used or reproduced in any way without the express consent of MKEC.

BUBBLE MAP

PROJECT NO.	448-90156	
DATE	MAR 2019	
SCALE	AS NOTED	
DESIGNED	DRAWN	CHECKED
SLF	RWB	SLF
NO.	REVISION	DATE