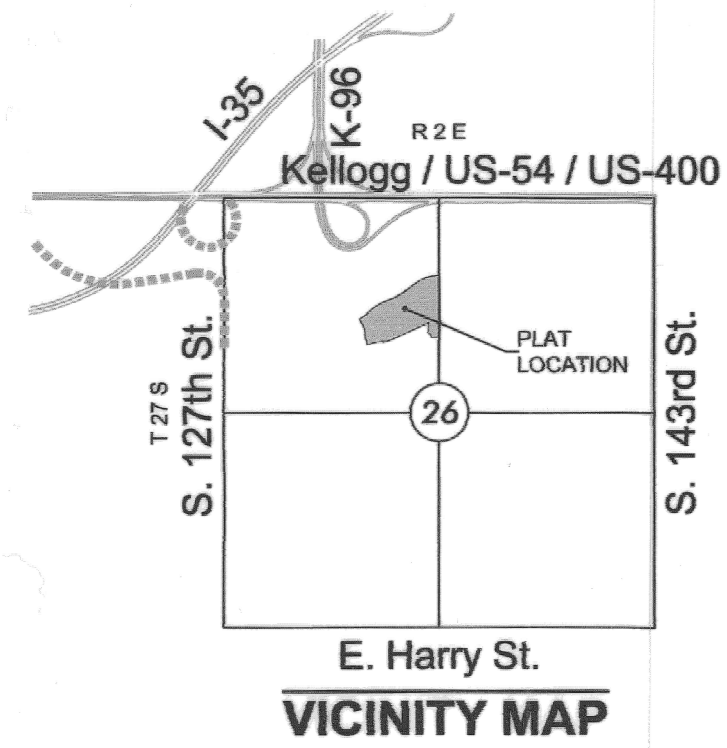


FINAL PLAT

COUNTRY HOLLOW SECOND ADDITION

AN ADDITION TO WICHITA, SEDGWICK COUNTY, KANSAS

a replat of a portion of Country Hollow Addition, an addition to Wichita, Sedgwick County, Kansas



MINIMUM PAD ELEVATION (LOWEST OPENING)		
LOTS (inclusive)	BLOCK	ELEVATION NAVD88
1-4	1	1326.7

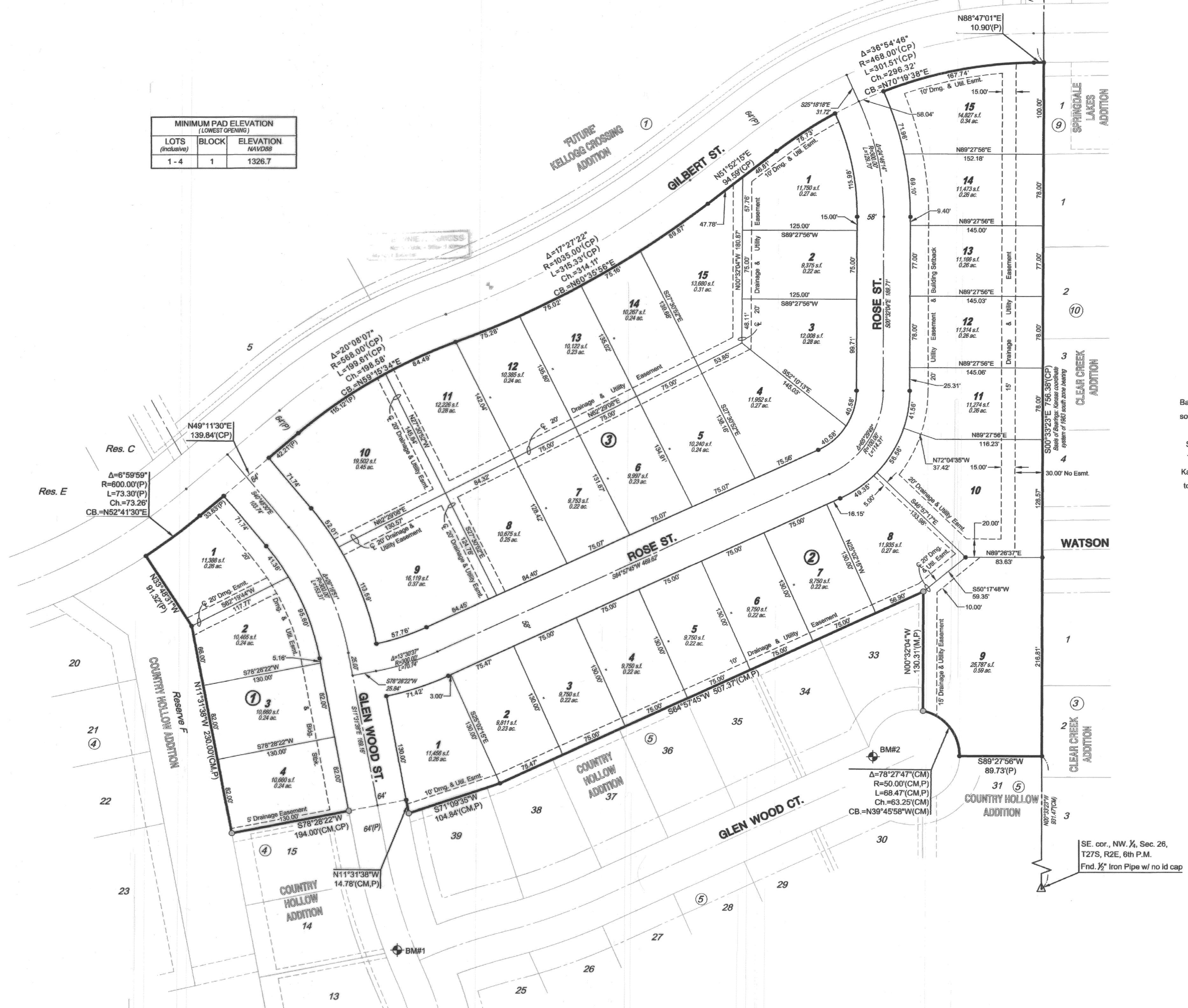
LEGEND

Date of Survey: July 2018

- △ = Section Corner Monument Found
- ⊙ = Found 3/4" rebar w/ MKEC CLS 39 id. cap
- ⊙ = Set 3/4" rebar w/ MKEC CLS 39 id. cap
- ⊙ = Benchmark
- (P) = Platted
- (CM) = Calculated from Measurement
- Dmg. = Drainage
- Util. = Utility
- Emst. = Easement
- 1 = Lot
- ① = Block

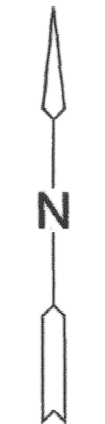
BENCHMARKS

- BM#1 Chiseled square on top of curb between Lots 13 and 14, Block 4, Country Hollow Addition. Elev.=1333.3 NAVD88
- BM#2 Chiseled square on top of curb between Lots 33 and 34, Block 5, Country Hollow Addition. Elev.=1341.01 NAVD88



NE. cor., NW 1/4, Sec. 26, T27S, R2E, 6th P.M.
Fnd. 3/4" Rebar w/ id cap in thimble

SE. cor., NW 1/4, Sec. 26, T27S, R2E, 6th P.M.
Fnd. 1/2" Iron Pipe w/ no id cap



SCALE: 1"=60'

Basis of Bearings: Kansas coordinate system of 1983 south zone bearing of S00°33'23"E on the east line of the Northwest Quarter, Section 26, Township 27 South, Range 2 East of the 6th Principal Meridian. This plat is surveyed and platted on NAD83 using Kansas state plane south zone coordinates, modified to the surface, having a combined adjustment scale factor of 1.000120014401728

