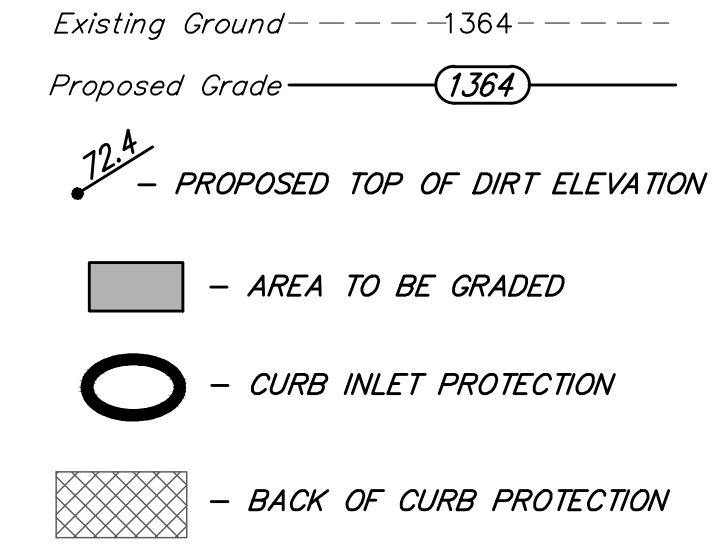
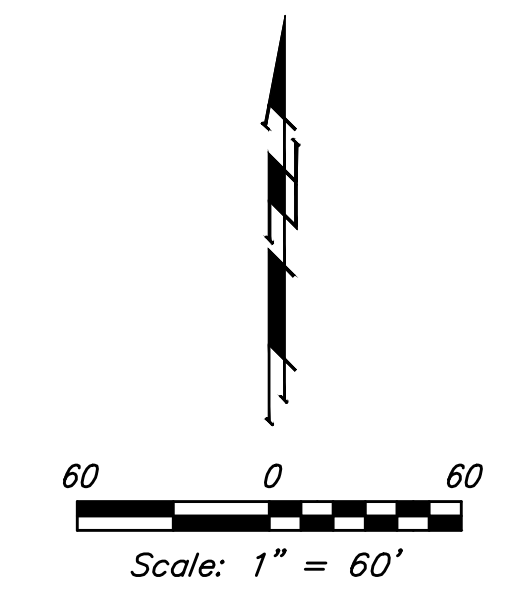


BENCHMARKS:
 RR spike in asphalt, SW COR., N1/2, SW1/4, Sec. 34, TWP. 26-S, R-2-E. Elev. = 1400.59 NAVD88
 RR spike in E. face of power pole, 174± N. of S. line, N1/2, SW1/4 & 49± E. of W. line, SW1/4, Sec. 34, TWP. 26-S, R-2-E. Elev. = 1398.64 NAVD88
 RR spike in S. face of power pole, 294± S. of N. line, SW1/4, & 48± E. of W. line, SW1/4, Sec. 34, TWP. 26-S, R-2-E. Elev. = 1386.14 NAVD88

EARTH WORK TOTALS (Unadjusted)		
	Excavation	Compacted Fill
Total Earthwork	787	8,265

Earthwork Quantities reflect the best available topography and are for information only. The Contractor shall satisfy himself with the earthwork quantities as shown prior to bidding. No additional payments or change orders for earthwork will be accepted.

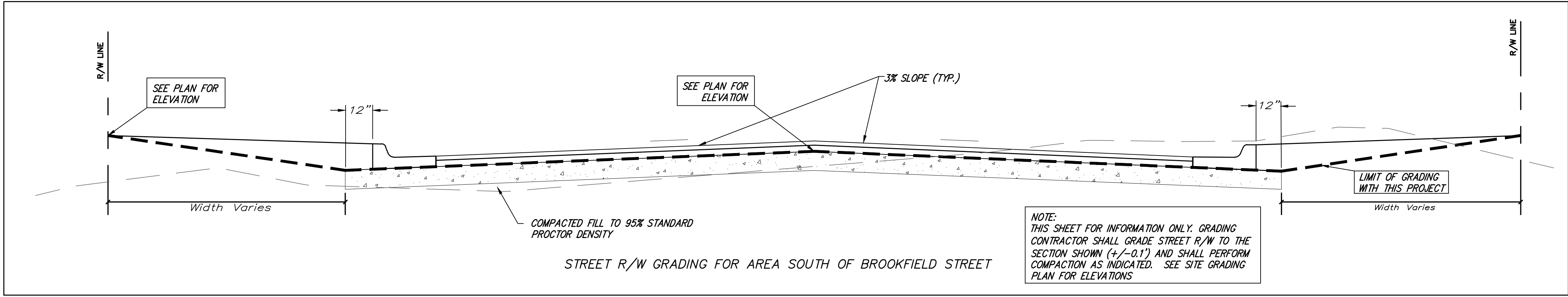
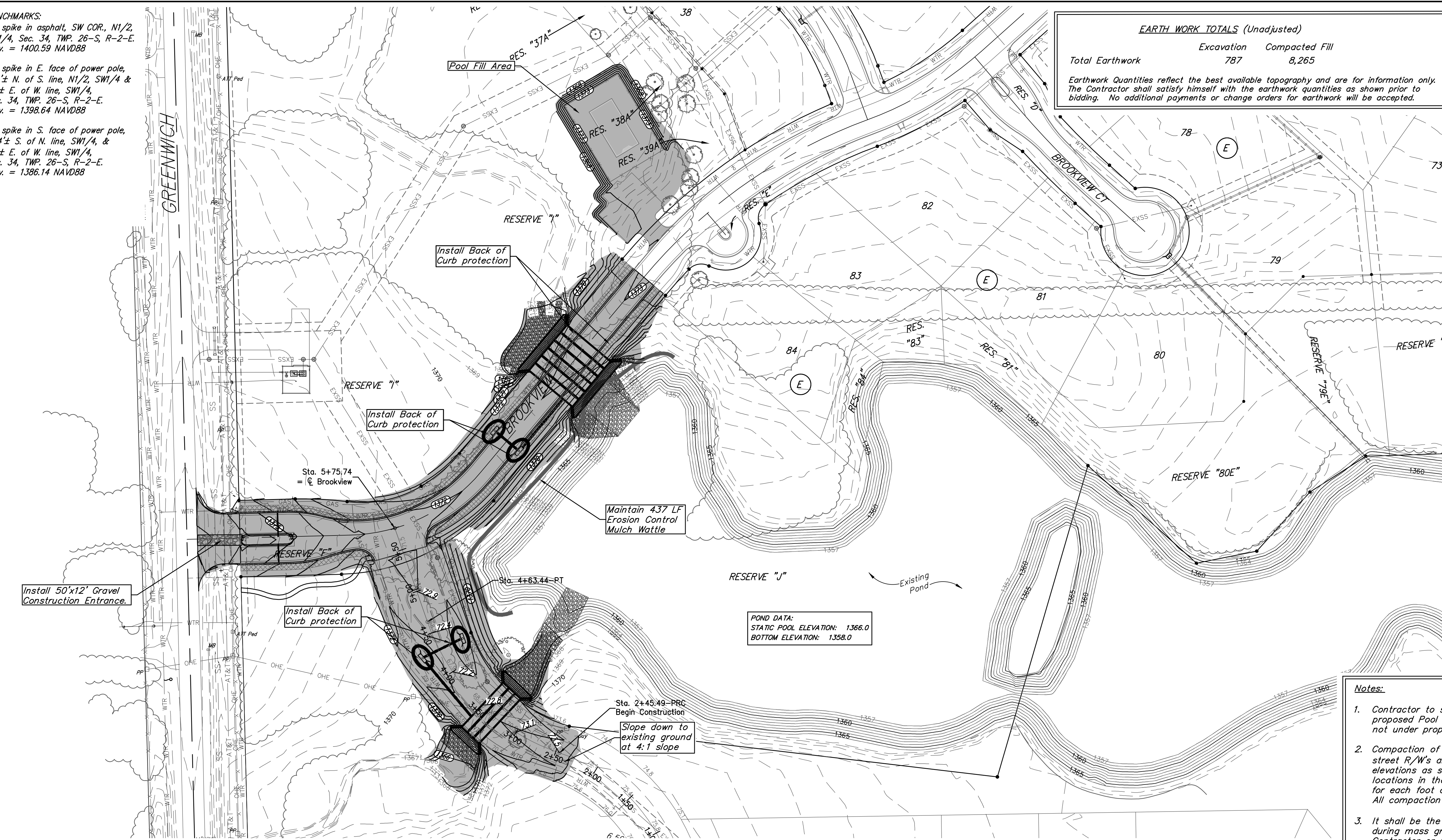


EROSION CONTROL MEASURE	INSTALL	MAINTAIN
CONSTRUCTION ENTRANCE (EA)	0	1
BACK OF CURB PROTECTION (LF)	1,125	0
CURB INLET PROTECTION (EA)	4	0
MAINTAIN EROSION CONTROL BMP's (LS)	0	1

NOTES:
 Quantities are for information only. All costs to be included in the L.S. bid item, "Erosion Control". Contractor shall make sure all erosion control is in place before project is accepted. All existing BMP's including construction entrance, sediment barriers, silt fence, cut-off trench, and erosion control mat shall be maintained and repaired if necessary. This plan represents the minimum standard. Any additional erosion control measures shall be installed by the Contractor as needed.

- NOTES:**
- Contractor shall make sure all erosion control is in place before project is accepted. This plan represents the minimum standard. Any additional erosion control measures shall be installed by the Contractor as needed.
 - Removal of Gravel Construction Entrance for pavement construction shall be included in bid item "Site Clearing"
 - This Plan is Not To Be Used As A Comprehensive Grading Plan. All Spot Elevations Are Proposed & Subject To Change.
 - All areas disturbed during construction shall be seeded, mulched, and fertilized as per Cover Sheet General Notes.

- Notes:**
- Contractor to strip top 6" of soil within street right-of-way and proposed Pool Fill compaction areas. Topsoil may be spread in areas not under proposed pavement.
 - Compaction of 95% Std. Proctor Density shall be obtained in all street R/W's and within specified Pool Fill Area up to the plan elevations as shown. Compaction testing shall be performed at two locations in the Pool Fill Area and two locations in Brookfield Street for each foot of compacted fill placed up to the finished dirt grade. All compaction test results shall be submitted to the Design Engineer.
 - It shall be the Contractor's responsibility to protect existing utilities during mass grading. Any damage done to these systems by Contractor or subcontractor shall be repaired at no additional cost to the project.
 - All areas disturbed by construction shall be seeded as indicated in the cover sheet general notes.



Baughman Brookfield Addition
EROSION CONTROL
 Street Improvements

Baughman Company, P.A. 315 Ellis St. Wichita, KS 67211 P 316-262-7271 F 316-262-0149
 ENGINEERING | SURVEYING | PLANNING | LANDSCAPE ARCHITECTURE

PROJECT NUMBER 472-85349	DESIGN AEG	DRAWN JAK
REVISIONS:	APPROVED	DATE 4/02/19
	SCALE Noted	SHEET 10 OF 25

C:\Projects\Brookfield Addition_1604P190\Engineering\STR ENT_1709-E815\STR PLANS.dwg