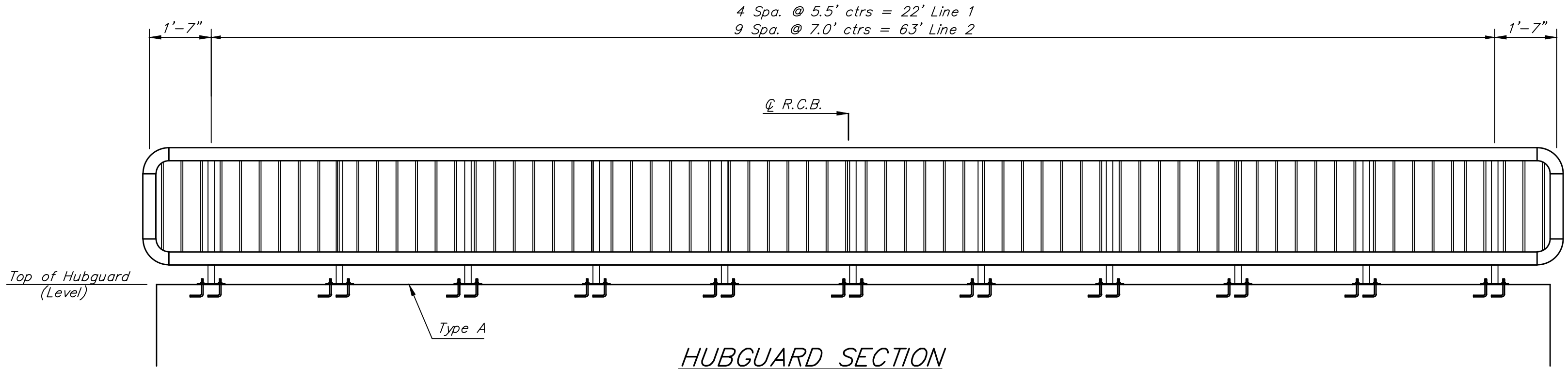
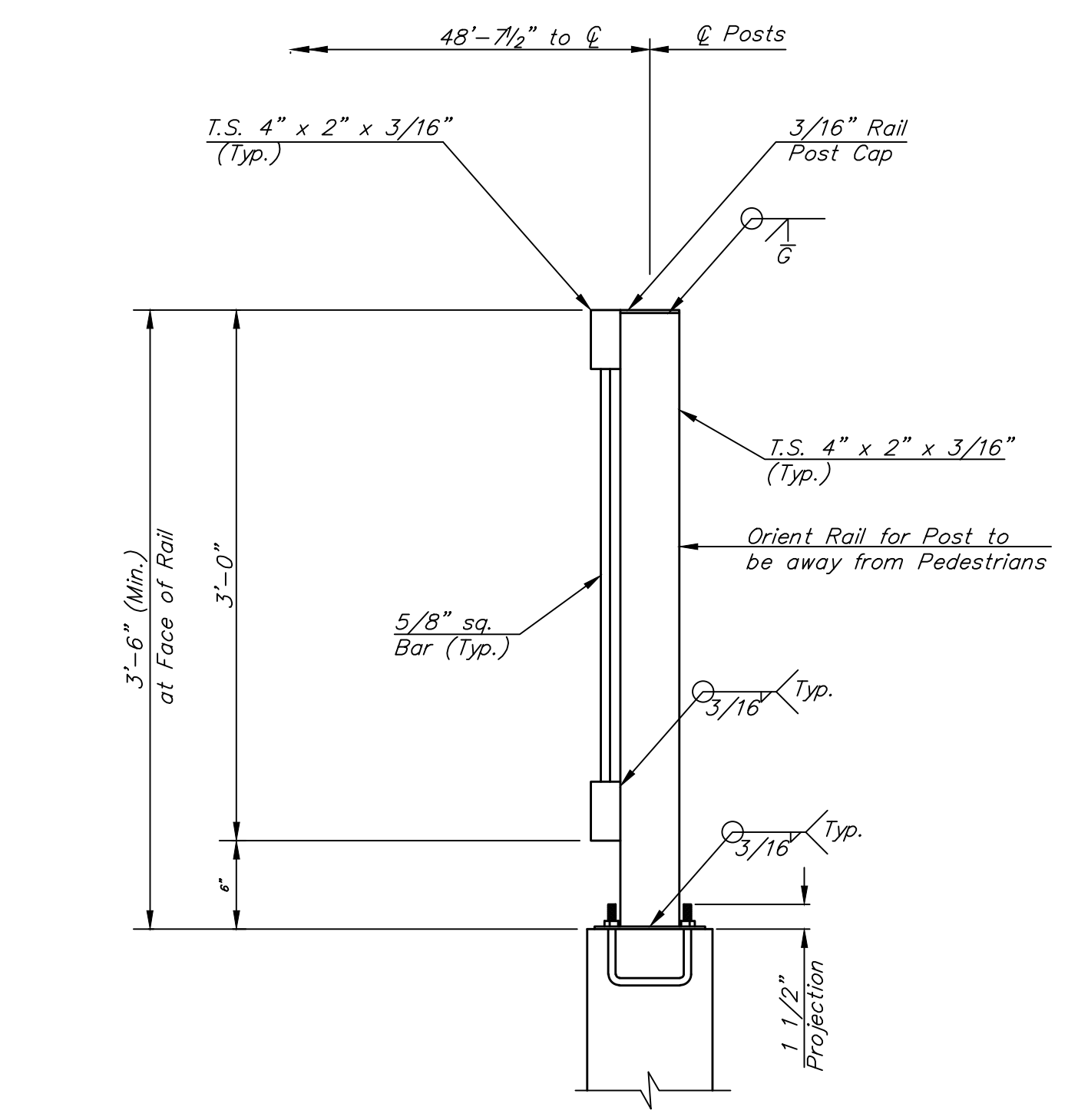


**HANDRAIL ELEVATION**



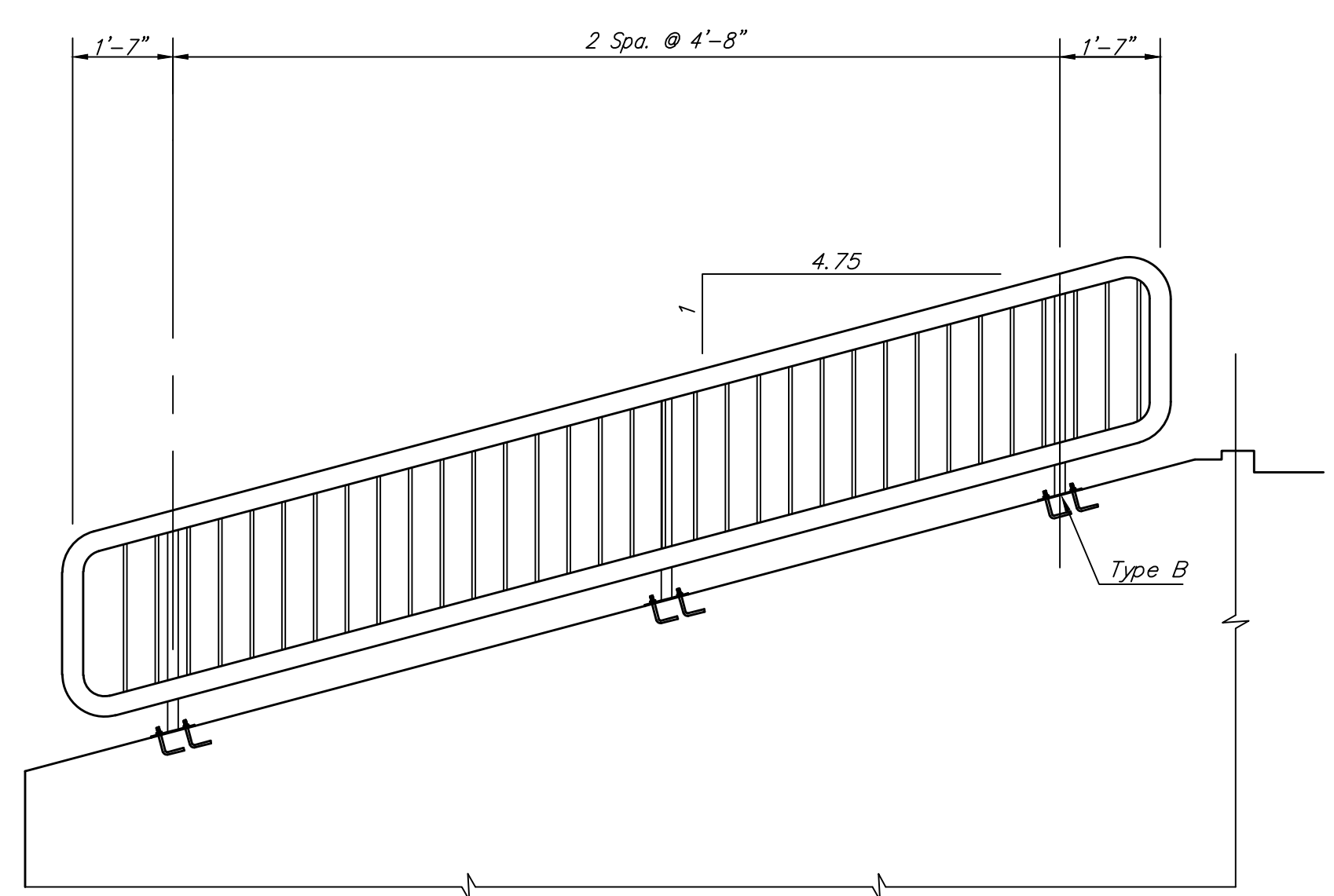
**HUBGUARD SECTION**

(4 Required)



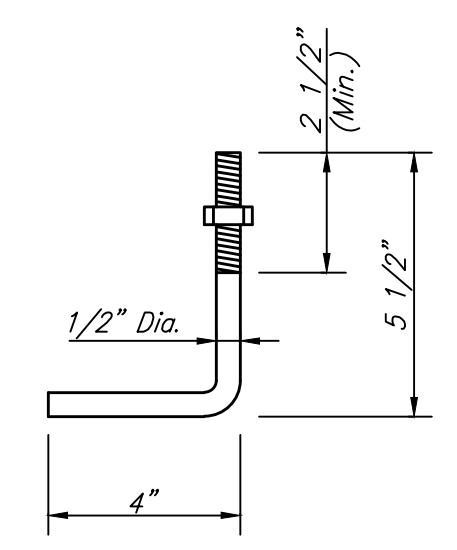
**SECTION A-A**

**Note:**  
Rail Post on Hubguard shown,  
Rail Posts on Wingwalls not shown  
but similar controlling criteria.



**HANDRAIL ELEVATION**

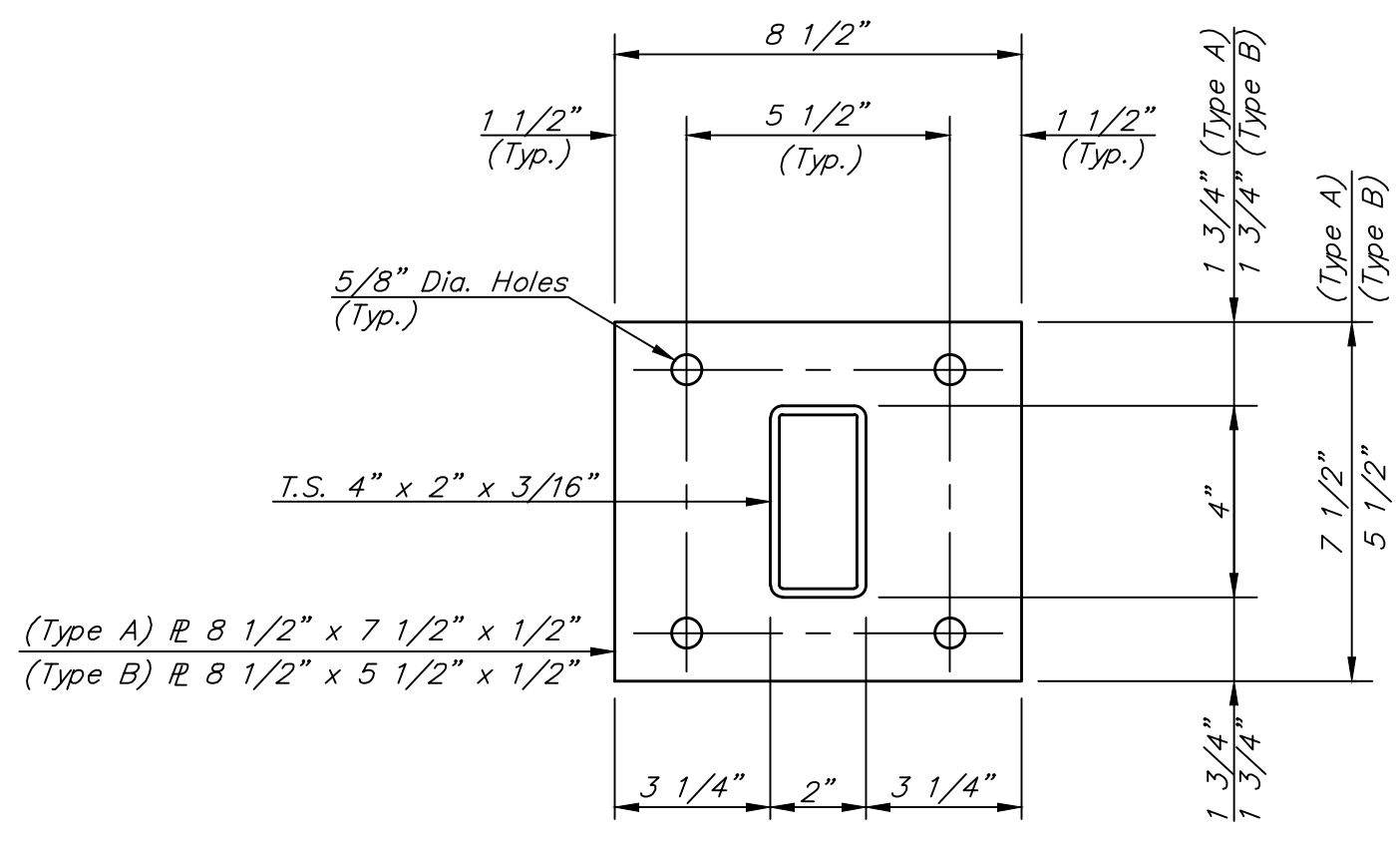
(4 Required)



Galvanized (ATSM A153)  
(May Substitute expandable anchor bolts  
when approved by the Engineer)

**ANCHOR BOLT**

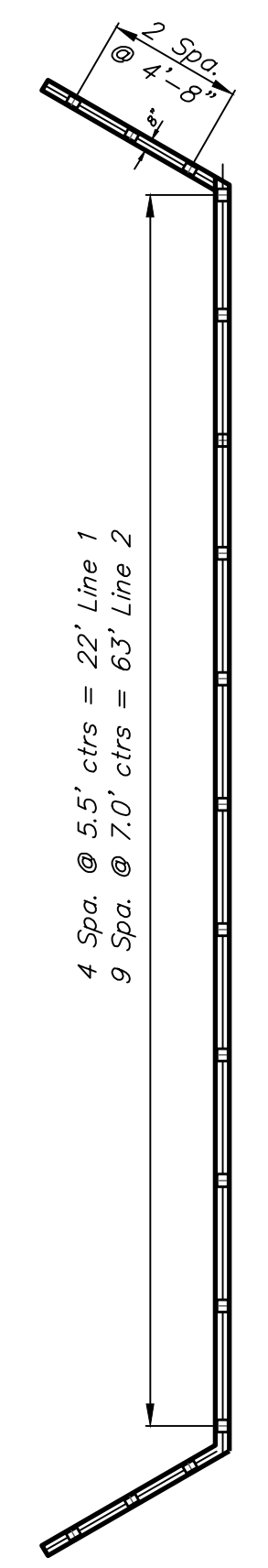
Orient to provide min. 2" edge  
clearance to either hubguard  
face or adjacent bolts



**BASE PLATE**

**GENERAL NOTES**

- The posts shall be hollow structural tubing. All structural steel and tubing shall comply to A.S.T.M. Designation A36 or A500 Grade B respectively.
- Rail shall be fabricated in lengths as shown.
- Posts and bars shall be set vertical and shimmed if required.
- The paint system shall be provided by Carboline: 350 Hanley Industrial Ct., St. Louis, MO. The application will be in accordance with the manufacturers recommendations. The paint procedure is as follows:
  - Abrasive blast to commercial finish SSPC-SP6 to obtain a surface profile of 1-1/2 mils.
  - Apply 2 coats of Carboline GP 818 Primer (2 to 4 mils per coat).
  - Apply one topcoat of Subsil 30 HS (2 to 3 Mils) (Color Carboline 2277). An approved substitution of the total paint system will be allowed with the approval of the Engineer.
- Material and construction shall conform to the Structural Welding Code A.W.S. D1.1-00.
- Shop details must be submitted and approved by the Engineer.



**RAIL LOCATION LINE 1 PLAN**

All labor, materials, anchor bolts, fabrication, installation, and ect. necessary to place the handrails as shown along the box culvert shall be included in the cost of the RCBC. (Both Sides)

		Brookfield Addition <b>HANDRAIL DETAIL</b> Storm Water Drain Improvements	
		Baughman Company, P.A. 315 Ellis St. Wichita, KS 67211 P 316-262-7271 F 316-262-0149 ENGINEERING   SURVEYING   PLANNING   LANDSCAPE ARCHITECTURE	
PROJECT NUMBER 472-85349	DESIGN Staff	DRAWN Staff	DATE 4/02/19
REVISIONS:	APPROVED	SCALE None	SHEET <b>22 OF 25</b>