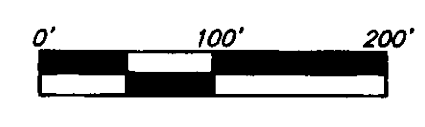


# BROOKFIELD ADDITION WICHITA, SEDGWICK COUNTY, KANSAS

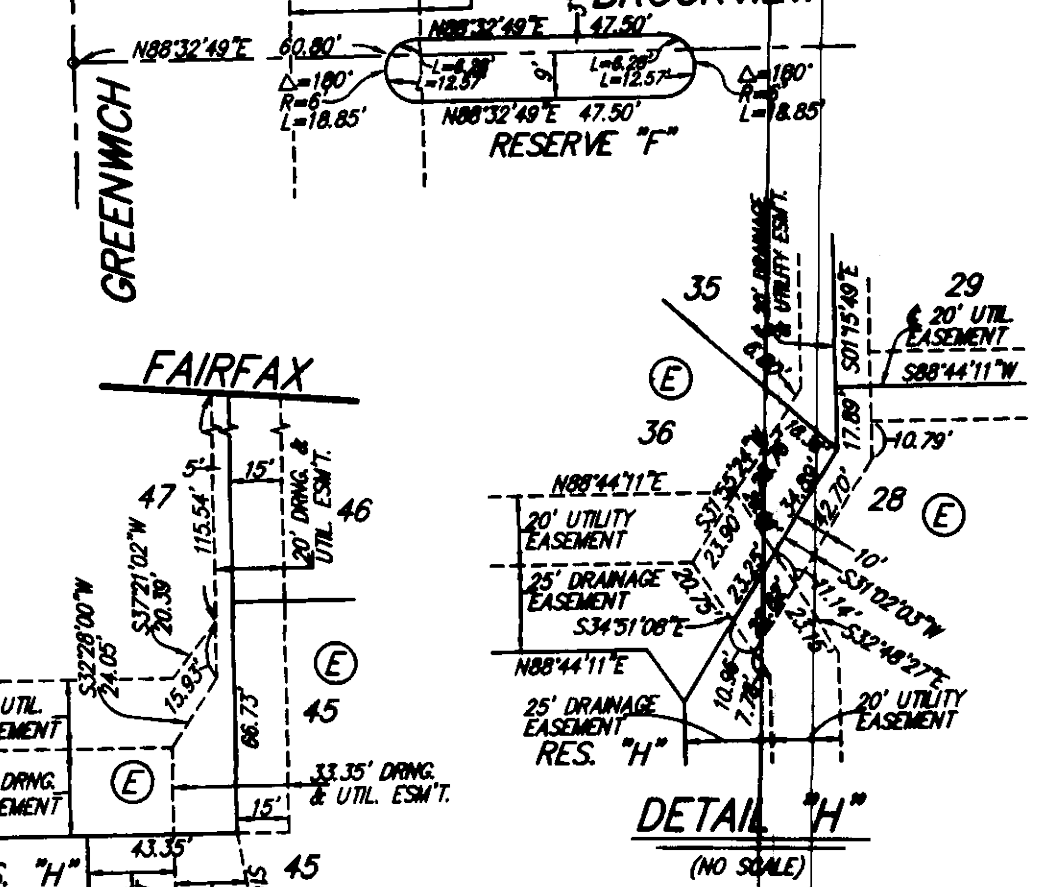
- = #4 REBAR W/ "BAUGHMAN" CAP (SET)
  - = 1" IRON PIPE (FOUND)
  - ◇ = 2" ALUMINUM "SEDGWICK COUNTY" CAP (FOUND)
  - △ = STONE (FOUND)
  - = #6 REBAR (FOUND)
- BENCHMARK:  
(M) = MEASURED  
(D) = DESCRIBED  
(P) = PLATTED
- CHISELED SQUARE ON E. SIDE OF SCHOOL SIGNAL POLE BASE, W. SIDE OF GREENWICH ROAD, 302' S. & 210' W. OF THE SW COR. NW 1/4, SEC. 34, TWP. 26-S, R-2-E. ELEV. = 1373.60 NAVD83
- TOP OF 1" IRON PIPE AT NW COR. NW 1/4, SEC. 34, TWP. 26-S, R-2-E. ELEV. = 1387.64 NAVD83



LOT	BLOCK	ELEVATION NAVD83
15-19	A	1376.0
20-22	A	1373.5
23-25	A	1375.0
5-7	F	1377.0
26-28	F	1372.8
30-32	F	1372.8
43-45	F	1372.8
47-51	F	1372.8
52-61	F	1372.8
62	F	1372.5
63-66	F	1370.8
67-71	F	1372.0
72-73	F	1372.7
79-80	F	1373.0
81-84	F	1373.5

DETAIL "B" (NO SCALE)

DETAIL "F" (NO SCALE)



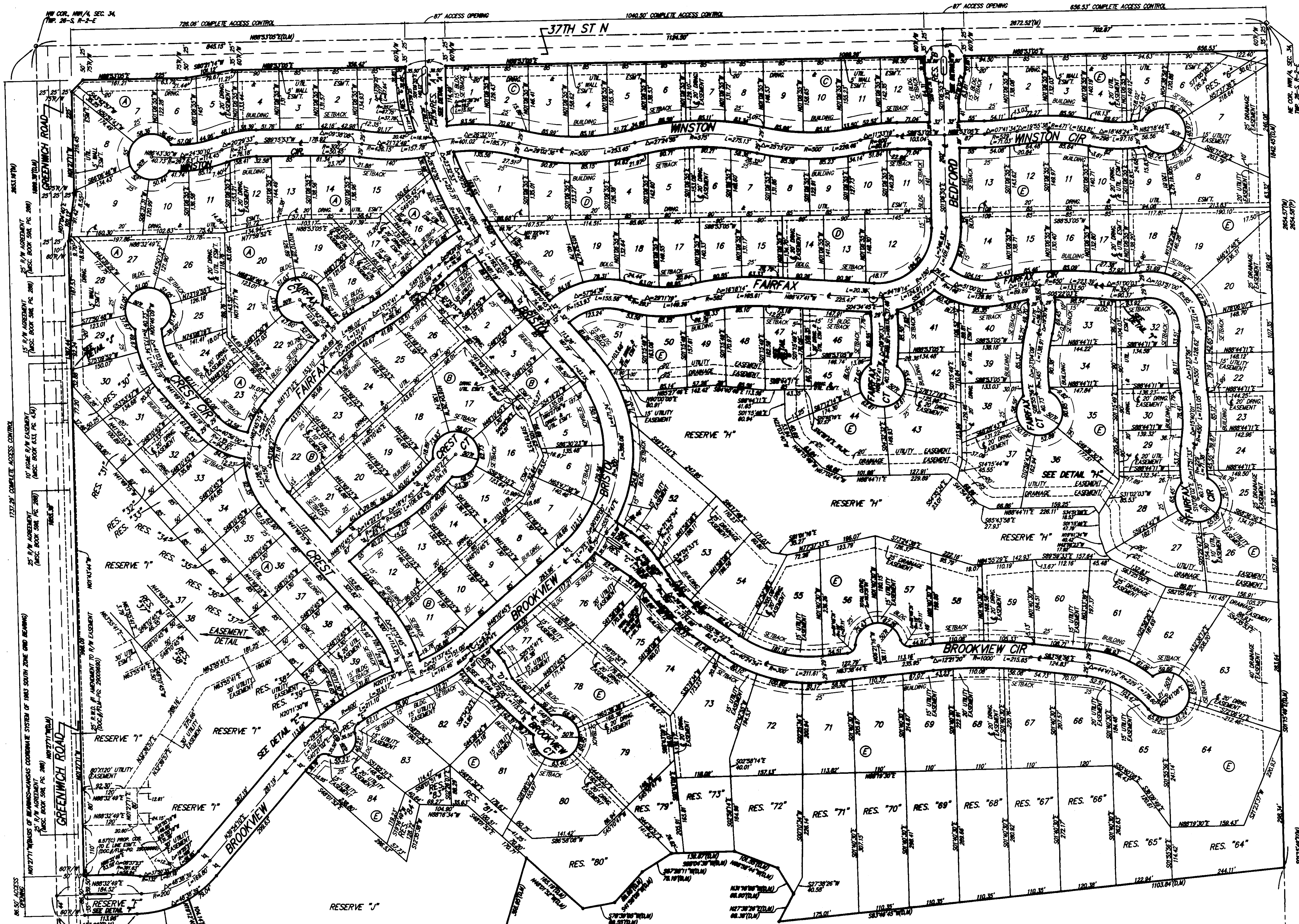
DETAIL "G" (NO SCALE)

DETAIL "I" (NO SCALE)

DETAIL "D" (NO SCALE)

DETAIL "E" (NO SCALE)

DETAIL "A" (NO SCALE)



NOTE:  
A drainage plan has been developed for the plot and of drainage easements, rights-of-way, or reserves shall remain of established grade or as modified with the approval of the applicable City or County Engineer and unobstructed to allow for the conveyance of stormwater.