

BENCHMARKS:
 RR spike in asphalt, SW COR., N1/2, SW1/4, Sec. 34, TWP. 26-S, R-2-E. Elev. = 1400.59 NAVD88

RR spike in E. face of power pole, 174± N. of S. line, N1/2, SW1/4 & 49± E. of W. line, SW1/4, Sec. 34, TWP. 26-S, R-2-E. Elev. = 1398.64 NAVD88

RR spike in S. face of power pole, 294± S. of N. line, SW1/4, & 48± E. of W. line, SW1/4, Sec. 34, TWP. 26-S, R-2-E. Elev. = 1386.14 NAVD88

Sta. 0+62.50, 27.25' Lt.
 Install subdivision benchmark (Flat survey marker No. 8134-08 3" top diameter) in top of curb. Cost shall be incidental to L.F. curb & gutter.

Sta. 0+55, 34' Lt.
 Install R1-1 (Stop) Sign (See Detail, Sheet 4)

Sta. 0+60.00
 Begin Construct of AC Pavement 5" (3" Bit Base) w/ Crushed Rock Base 5", Reinforced

Construct 5" A.C. Pvm't Hook-up w/5" Reinf. Rock Base

Saw Cut, Remove & Replace Existing Surface Course as Indicated. Cost Shall be Included in "Site Clearing"

Valve Number	Baseline Station	Offset Distance	Offset Direction
1	2+14.07	18'	Lt.
2	6+41.51	26'	Lt.

***NOTE:**
 The sidewalk layout in this area is preliminary and the Contractor should include in his bid tree removal and hand forming of the sidewalk. Prior to construction, meet with Developer to determine alignment.

Sta. 0+37, 37' Rt.
 Install Metro (SNS) Ass'y "Brookview" E" & "Greenwich" N" (See Detail, Sheet 4)

Curve #3
 Curve Data Based on Face of Curb
 Rad. = 150' Delta = 17°31'01" Tangent = 23.11'
 Arc = 45.08' L.C. = 45.68' Def./Ft. = 11.65724 Min.

Station	Arc	Chord 8' Rt.	Defl.	Total Defl.
H	-	-	0°00'00"	0°00'00"
I	22.54'	24.13'	4°22'45"	4°22'45"
J	22.54'	24.13'	4°22'46"	8°45'31"

Curve #4
 Curve Data Based on Face of Curb
 Rad. = 150' Delta = 11°35'00" Tangent = 15.21'
 Arc = 30.32' L.C. = 30.27' Def./Ft. = 11.46108 Min.

Station	Arc	Chord 8' Rt.	Defl.	Total Defl.
K	-	-	0°00'00"	0°00'00"
L	15.16'	14.35'	2°53'45"	2°53'45"
M	15.16'	14.35'	2°53'45"	5°47'30"

Curve #1
 Curve Data Based on Face of Curb
 Rad. = 150' Delta = 16°04'10" Tangent = 21.17'
 Arc = 42.06' L.C. = 41.93' Def./Ft. = 11.46180 Min.

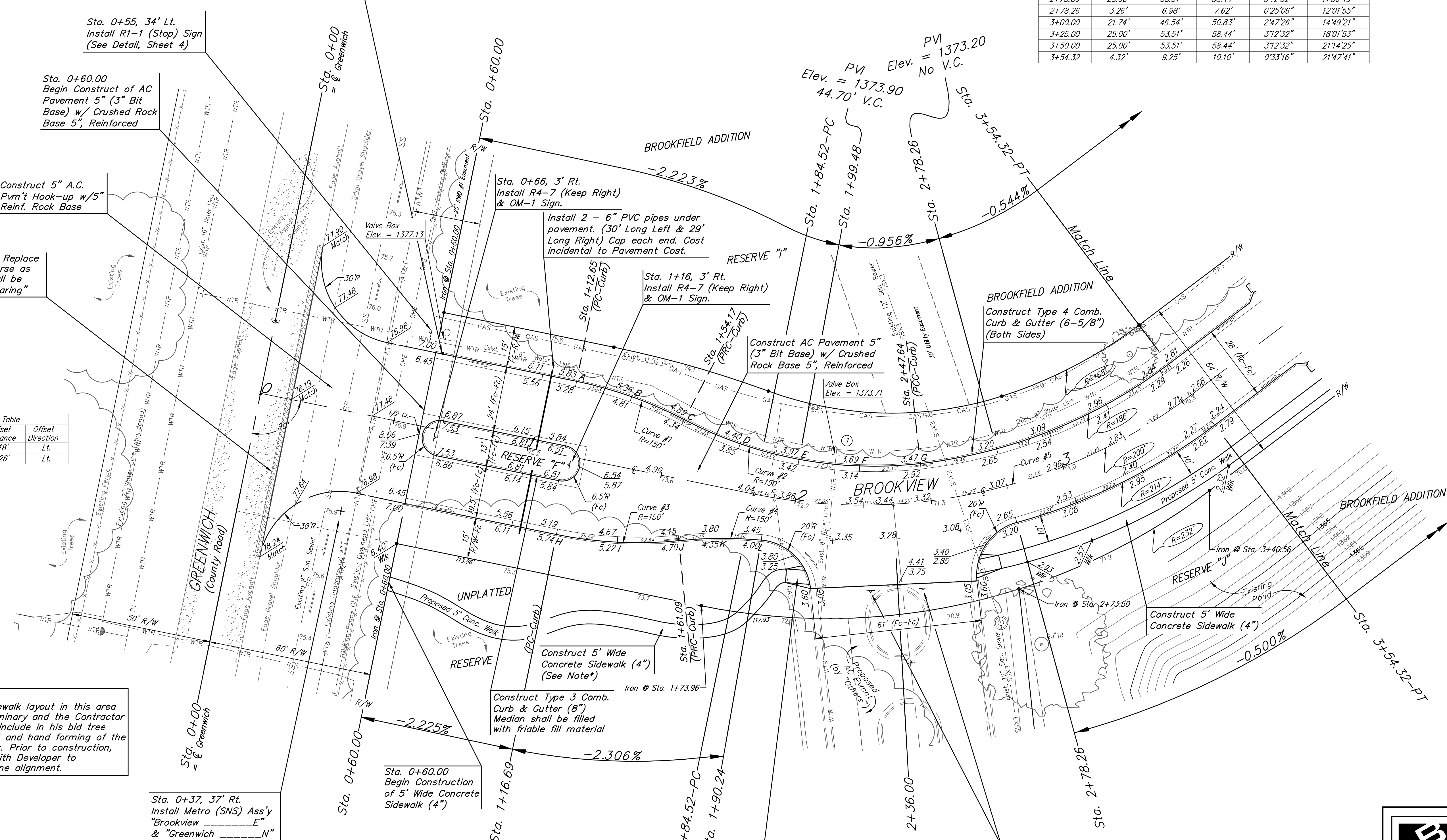
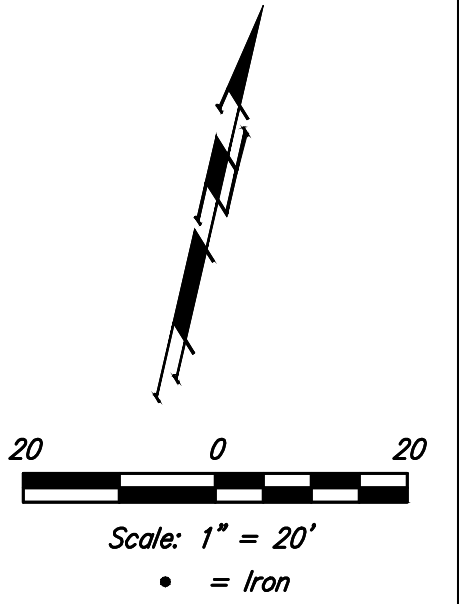
Station	Arc	Chord 8' Lt.	Defl.	Total Defl.
A	-	-	0°00'00"	0°00'00"
B	21.03'	22.14'	4°01'02"	4°01'02"
C	21.03'	22.14'	4°01'03"	8°02'05"

Curve #2
 Curve Data Based on Face of Curb
 Rad. = 150' Delta = 34°09'06" Tangent = 46.08'
 Arc = 89.40' L.C. = 88.09' Def./Ft. = 11.46029 Min.

Station	Arc	Chord 8' Lt.	Defl.	Total Defl.
C	-	-	0°00'00"	0°00'00"
D	22.35'	21.14'	4°16'08"	4°16'08"
E	22.35'	21.14'	4°16'08"	8°32'16"
F	22.35'	21.14'	4°16'09"	12°48'25"
G	22.35'	21.14'	4°16'08"	17°04'33"

Curve #5
 Curve Data Based on Centerline
 Rad. = 500' Delta = 43°35'22" Tangent = 199.93'
 Arc = 169.80' L.C. = 371.28' Def./Ft. = 7.70132 Min.

Station	Arc	Face Chord Lengths		Defl.	Total Defl.
		8' Left	8' Right		
1+84.52	-	-	-	0°00'00"	0°00'00"
1+90.24	5.72'	12.25'	13.38'	0°44'03"	0°44'03"
2+00.00	9.76'	20.90'	22.82'	1°15'10"	1°59'13"
2+25.00	25.00'	53.51'	58.44'	3°12'32"	5°11'45"
2+50.00	25.00'	53.51'	58.44'	3°12'32"	8°24'17"
2+75.00	25.00'	53.51'	58.44'	3°12'32"	11°36'49"
2+78.26	3.26'	6.98'	7.62'	0°25'06"	12°01'55"
3+00.00	21.74'	46.54'	50.83'	2°47'26"	14°49'21"
3+25.00	25.00'	53.51'	58.44'	3°12'32"	18°01'53"
3+50.00	25.00'	53.51'	58.44'	3°12'32"	21°14'25"
3+54.32	4.32'	9.25'	10.10'	0°33'16"	21°47'41"



Construct Std. Type A Wheel Chair Ramp with Detectable Warning (Both Sides) (See Detail, Sheet 3)

Street & Station	Subdivision Bench Marks Location Description	Elevation
Brookview 0+62.50, 27.25' Lt.	Adjacent to Fire Hydrant SW Cor., Reserve 'I', Brookfield Addition	

Baughman Brookfield Addition
BROOKVIEW
 Sta. 0+00 to Sta. 3+54.32

Baughman Company, P.A. 315 Ellis St. Wichita, KS 67211 P 316-262-7271 F 316-262-0149
 ENGINEERING | SURVEYING | PLANNING | LANDSCAPE ARCHITECTURE

PROJECT NUMBER 472-85349	DESIGN AEG	DRAWN JAK
REVISIONS:	APPROVED	DATE 4/02/19
	SCALE Noted	SHEET 6 OF 25

C:\Projects\Brookfield Addition_16-04\190\Engineering\STR ENT_17-09\ER15\STR PLAN.dwg