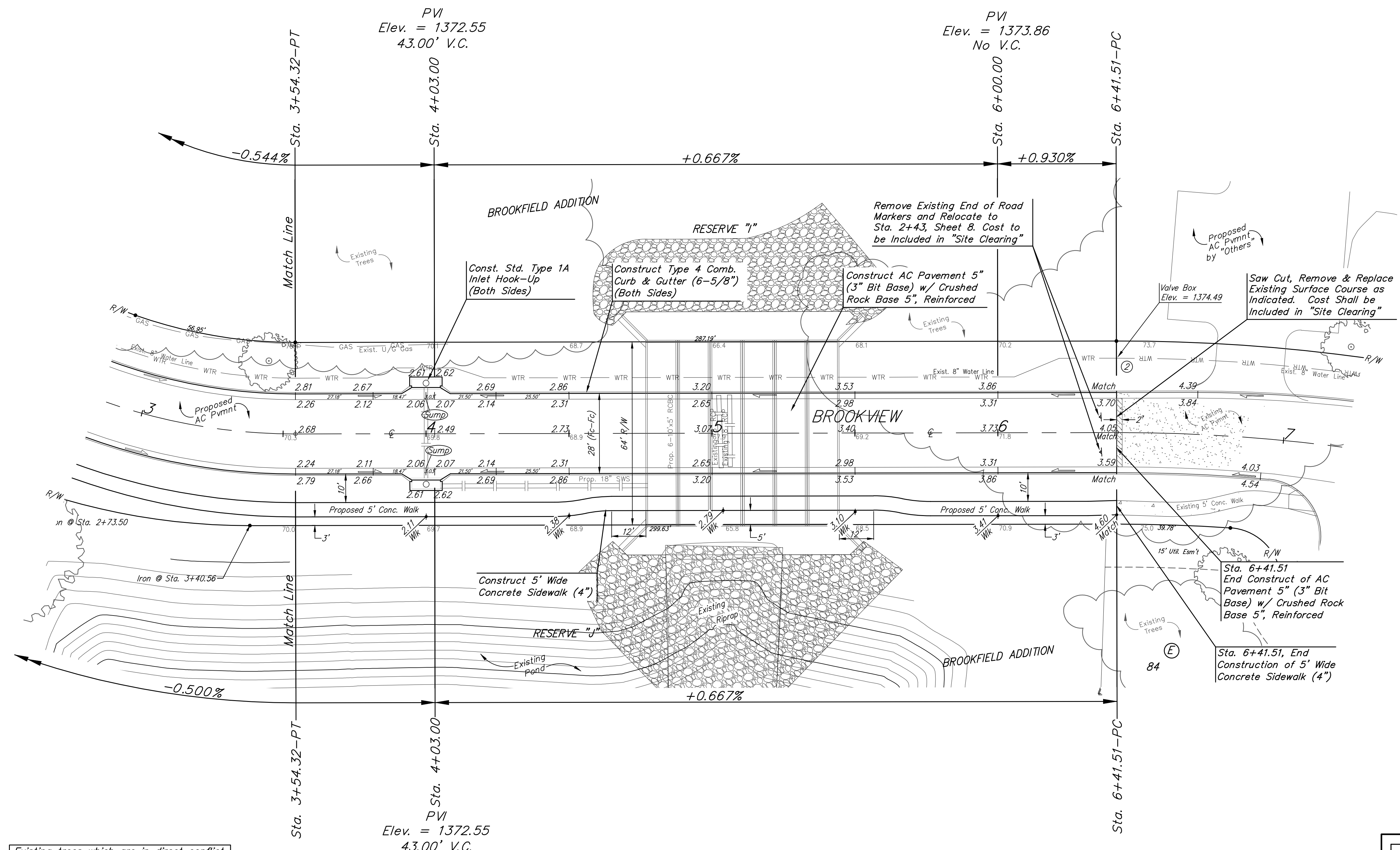
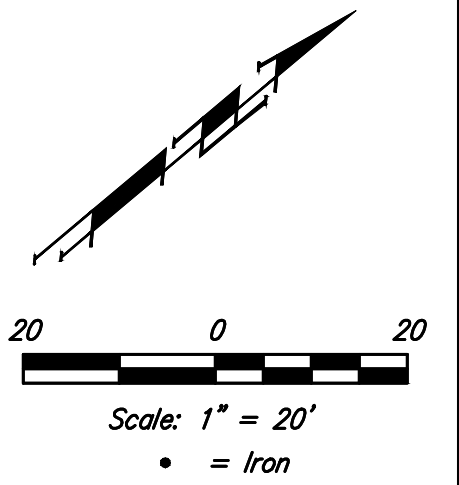




**BENCHMARKS:**  
 RR spike in asphalt, SW COR., N1/2, SW1/4, Sec. 34, TWP. 26-S, R-2-E. Elev. = 1400.59 NAVD88  
 RR spike in E. face of power pole, 174± N. of S. line, N1/2, SW1/4 & 49± E. of W. line, SW1/4, Sec. 34, TWP. 26-S, R-2-E. Elev. = 1398.64 NAVD88  
 RR spike in S. face of power pole, 294± S. of N. line, SW1/4, & 48± E. of W. line, SW1/4, Sec. 34, TWP. 26-S, R-2-E. Elev. = 1386.14 NAVD88



Existing trees which are in direct conflict with proposed new construction shall be removed or chainsaw trimmed by the Contractor ONLY with Developer's approval. Trees not in direct conflict with proposed new construction shall remain and be protected from damage. Cost to be included in bid item, "Site Clearing".

	Brookfield Addition <b>BROOKVIEW</b> Sta. 3+54.32 to Sta. 6+41.51	
	<small>Baughman Company, P.A. 315 Ellis St. Wichita, KS 67211 P 316-262-7271 F 316-262-0149          ENGINEERING   SURVEYING   PLANNING   LANDSCAPE ARCHITECTURE</small>	
PROJECT NUMBER <b>472-85349</b>	DESIGN AEG	DRAWN JAK
REVISIONS:	APPROVED 	DATE 4/02/19
	SCALE Noted	SHEET <b>7 OF 25</b>