

**BENCHMARKS:**  
 RR spike in asphalt, SW COR., N1/2, SW1/4, Sec. 34, TWP. 26-S, R-2-E. Elev. = 1400.59 NAVD88

RR spike in E. face of power pole, 174± N. of S. line, N1/2, SW1/4 & 49± E. of W. line, SW1/4, Sec. 34, TWP. 26-S, R-2-E. Elev. = 1398.64 NAVD88

RR spike in S. face of power pole, 294± S. of N. line, SW1/4, & 48± E. of W. line, SW1/4, Sec. 34, TWP. 26-S, R-2-E. Elev. = 1386.14 NAVD88

**POND DATA:**  
 STATIC POOL ELEVATION: 1365.0  
 BOTTOM ELEVATION: 1358.0

**CAUTION!**  
 12" San. Sewer Crossing

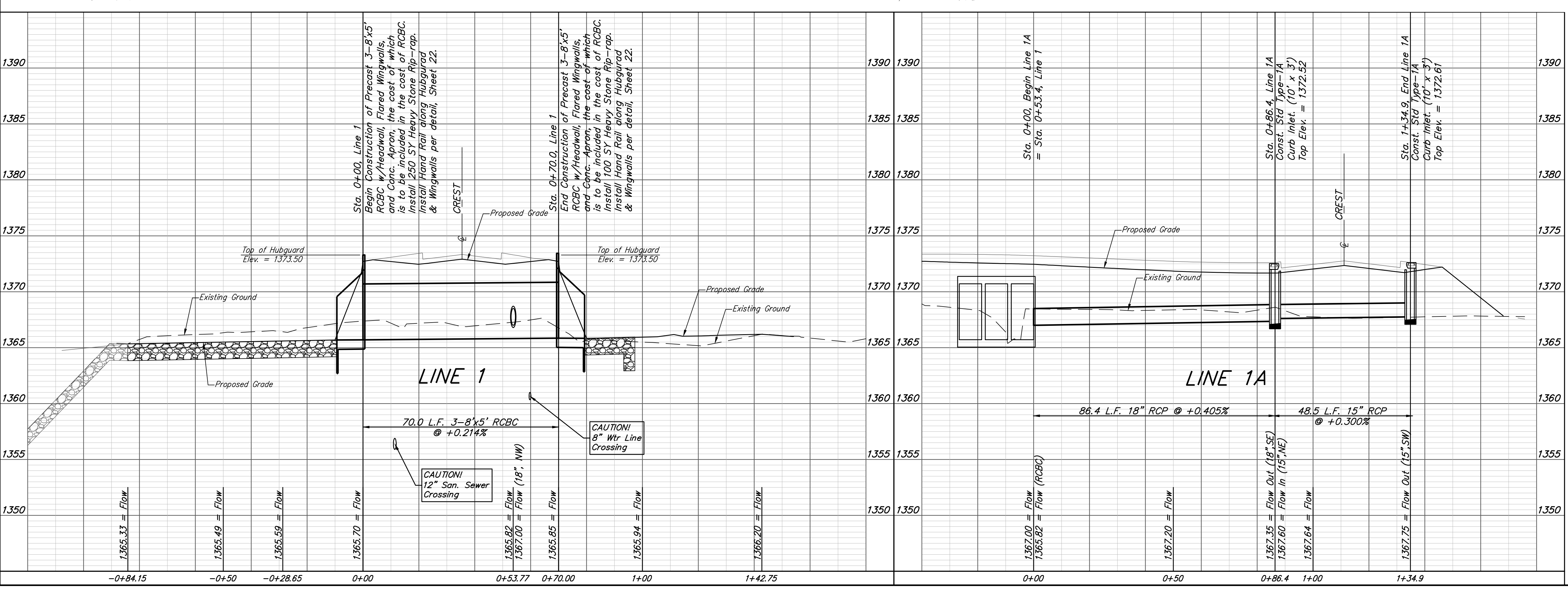
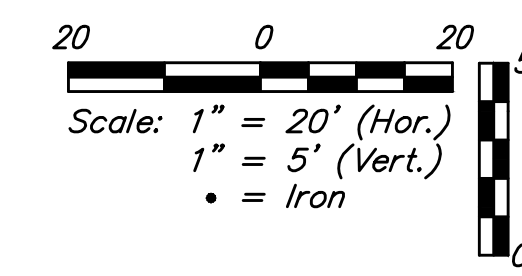
Match contour of existing riprap and swale

Sta. 0+00, Line 1  
 Begin Construction of Precast 3-8'x5' RCBC w/Headwall, Flared Wingwalls, and Conc. Apron, the cost of which is to be included in the cost of RCBC. Install 250 SY Heavy Stone Rip-rap. Install Hand Rail along Hubguard & Wingwalls per detail, Sheet 22.

**CAUTION!**  
 8" Wtr Line Crossing

Sta. 0+70.0, Line 1  
 End Construction of Precast 3-8'x5' RCBC w/Headwall, Flared Wingwalls, and Conc. Apron, the cost of which is to be included in the cost of RCBC. Install 100 SY Heavy Stone Rip-rap. Install Hand Rail along Hubguard & Wingwalls per detail, Sheet 22.

Sta. 0+53.4, Line 1 = Sta. 0+00, Line 1A



Existing trees which are in direct conflict with proposed new construction shall be removed or chainsaw trimmed by the Contractor ONLY with Developer's approval. Trees not in direct conflict with proposed new construction shall remain and be protected from damage. Cost to be included in bid item, "Site Clearing".

		<b>Brookfield Addition</b> <b>LINE 1 &amp; LINE 1A</b> Storm Water Sewer Improvements	
		<small>Baughman Company, P.A. 315 Ellis St. Wichita, KS 67211 P 316-262-7271 F 316-262-0149          ENGINEERING   SURVEYING   PLANNING   LANDSCAPE ARCHITECTURE</small>	
PROJECT NUMBER 472-85349	DESIGN AEG	DRAWN JAK	DATE 4/02/19
REVISIONS:	APPROVED	SCALE Noted	SHEET <b>8 OF 25</b>