

**BENCHMARKS:**  
 RR spike in asphalt, SW COR., N1/2, SW1/4, Sec. 34, TWP. 26-S, R-2-E. Elev. = 1400.59 NAVD88

RR spike in E. face of power pole, 174± N. of S. line, N1/2, SW1/4 & 49± E. of W. line, SW1/4, Sec. 34, TWP. 26-S, R-2-E. Elev. = 1398.64 NAVD88

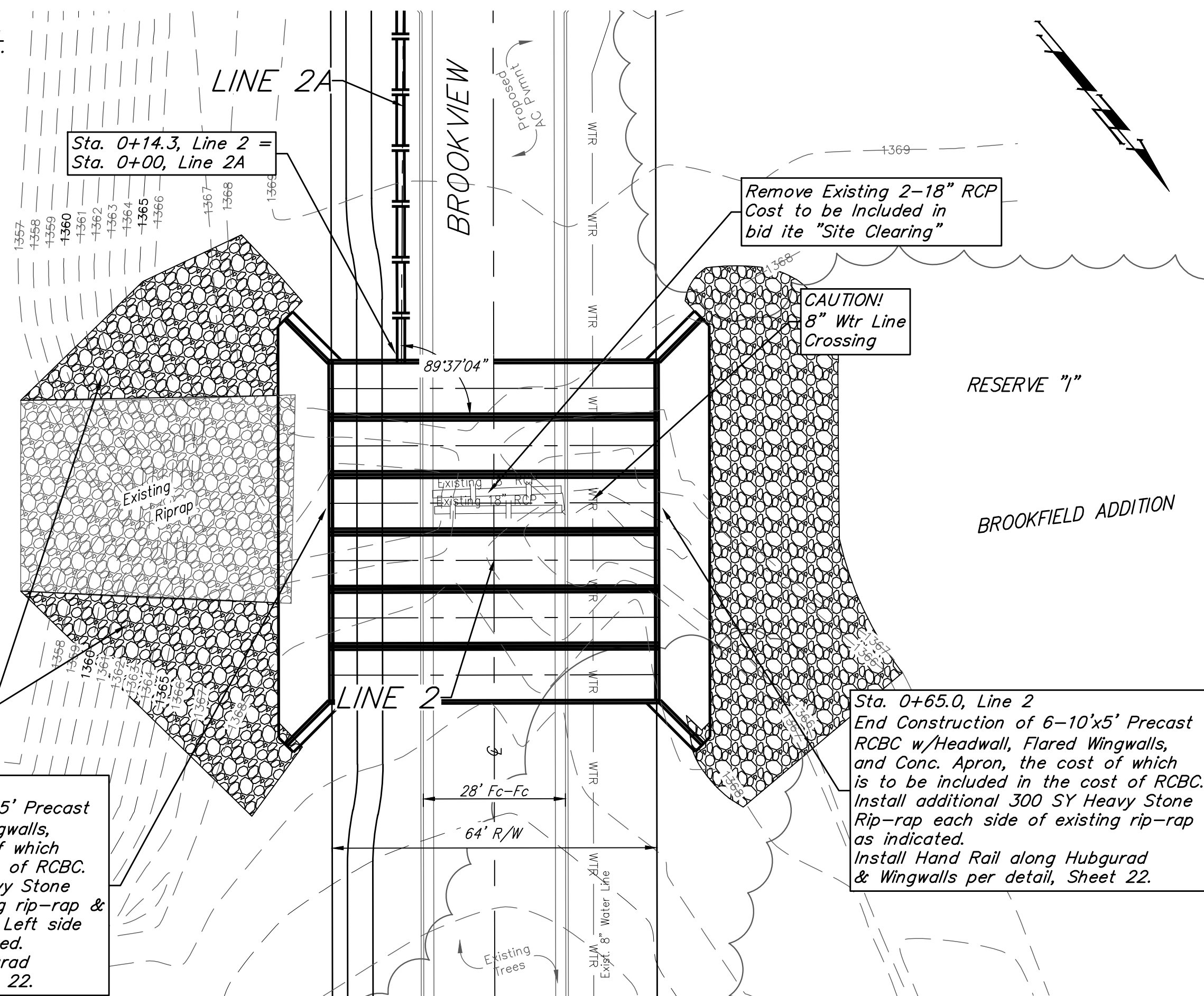
RR spike in S. face of power pole, 294± S. of N. line, SW1/4, & 48± E. of W. line, SW1/4, Sec. 34, TWP. 26-S, R-2-E. Elev. = 1386.14 NAVD88

**POND DATA:**  
 STATIC POOL ELEVATION: 1365.0  
 BOTTOM ELEVATION: 1358.0

RESERVE "J"

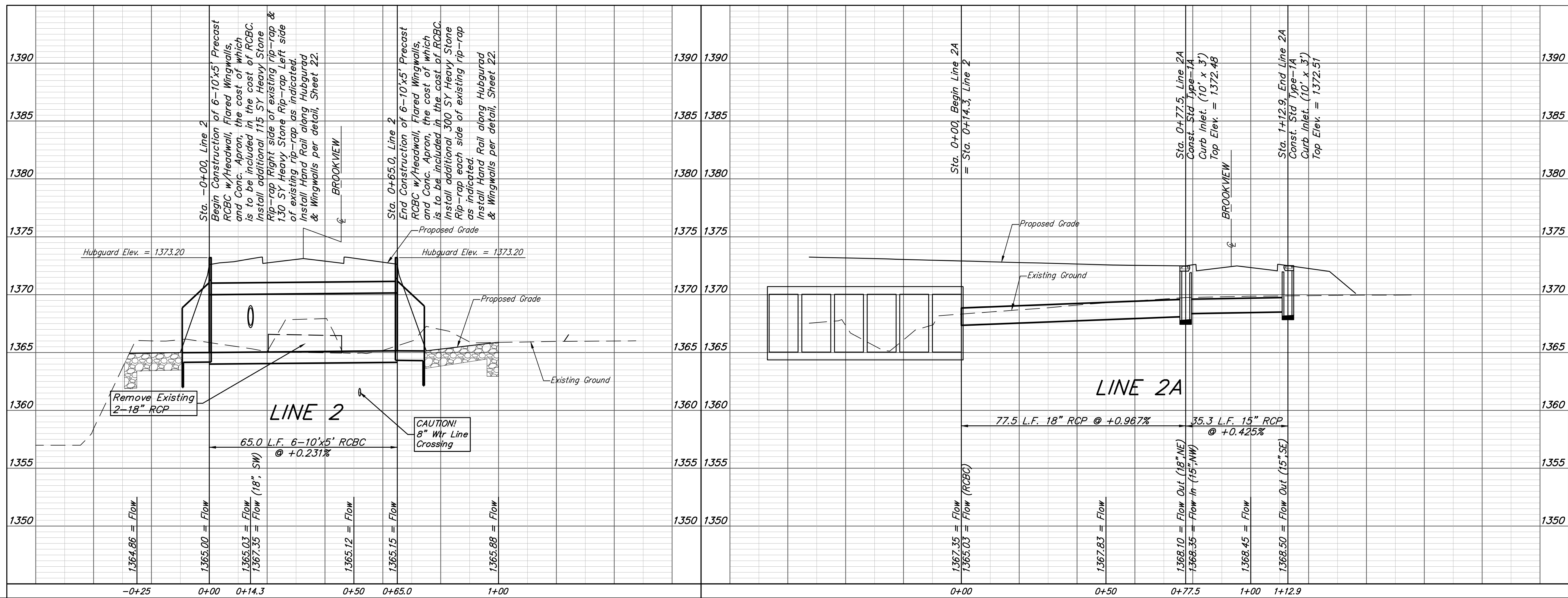
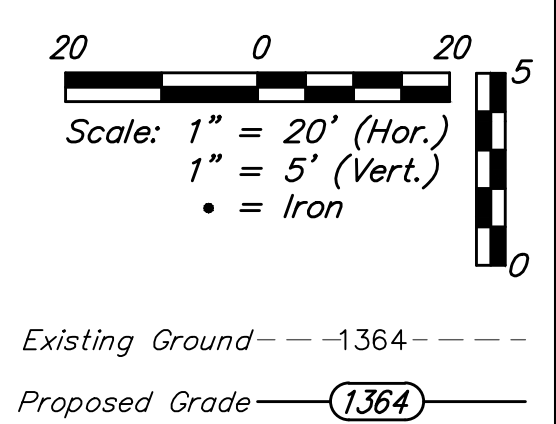
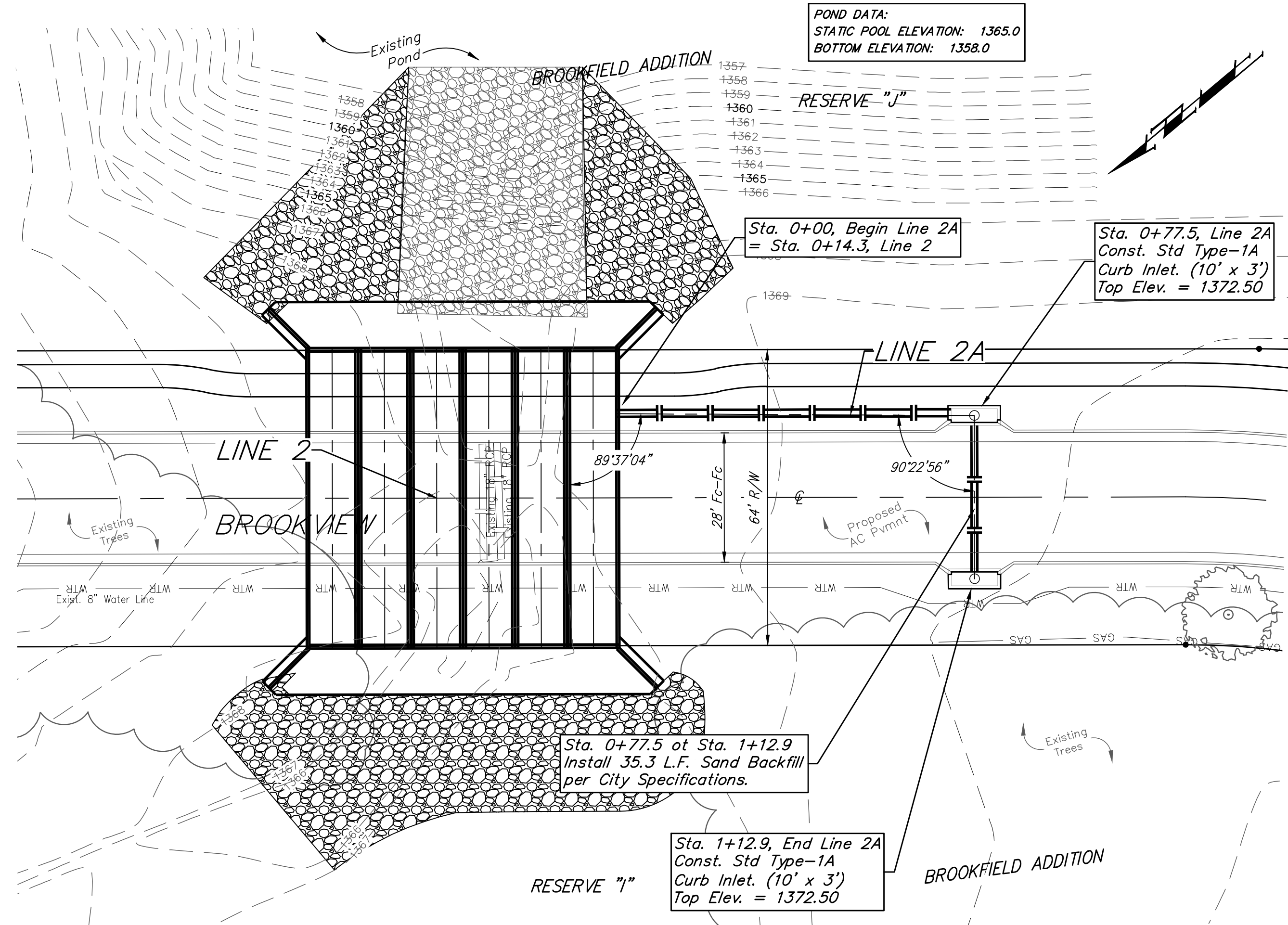
Additional riprap to be placed below water surface to the best extent possible without disturbing existing clay pond liner.

Sta. 0+00, Line 2  
 Begin Construction of 6-10'x5' Precast RCBC w/Headwall, Flared Wingwalls, and Conc. Apron, the cost of which is to be included in the cost of RCBC. Install additional 115 SY Heavy Stone Rip-rap Right side of existing rip-rap & 130 SY Heavy Stone Rip-rap Left side of existing rip-rap as indicated. Install Hand Rail along Hubguard & Wingwalls per detail, Sheet 22.



**POND DATA:**  
 STATIC POOL ELEVATION: 1365.0  
 BOTTOM ELEVATION: 1358.0

RESERVE "J"



Existing trees which are in direct conflict with proposed new construction shall be removed or chainsaw trimmed by the Contractor ONLY with Developer's approval. Trees not in direct conflict with proposed new construction shall remain and be protected from damage. Cost to be included in bid item, "Site Clearing".

**Baughman** Brookfield Addition  
**LINE 2 & LINE 2A**  
 Storm Water Sewer Improvements

Baughman Company, P.A. 315 Ellis St. Wichita, KS 67211 P 316-262-7271 F 316-262-0149  
 ENGINEERING | SURVEYING | PLANNING | LANDSCAPE ARCHITECTURE

PROJECT NUMBER: 472-85349 DESIGN: AEG DRAWN: JAK  
 APPROVED: DATE: 4/02/19  
 REVISIONS: SCALE: Noted SHEET: 9 OF 25

C:\Projects\Brookfield Addition\_1604P190\Engineering\STR ENT\_1709-E815\STR PLANS.dwg