

SANITARY SEWER TO SERVE LOT 1, BLOCK 1 WESTWAY ADDITION

Project # 468-83754

OCA # 744031

Lateral 50, Main 2, Sanitary Sewer No. 22

WICHITA, KANSAS

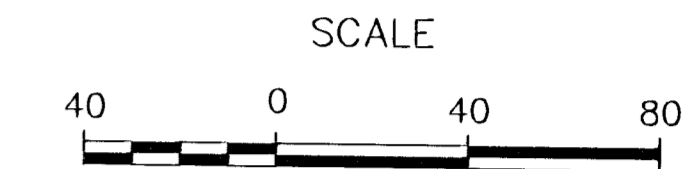
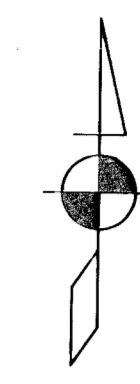
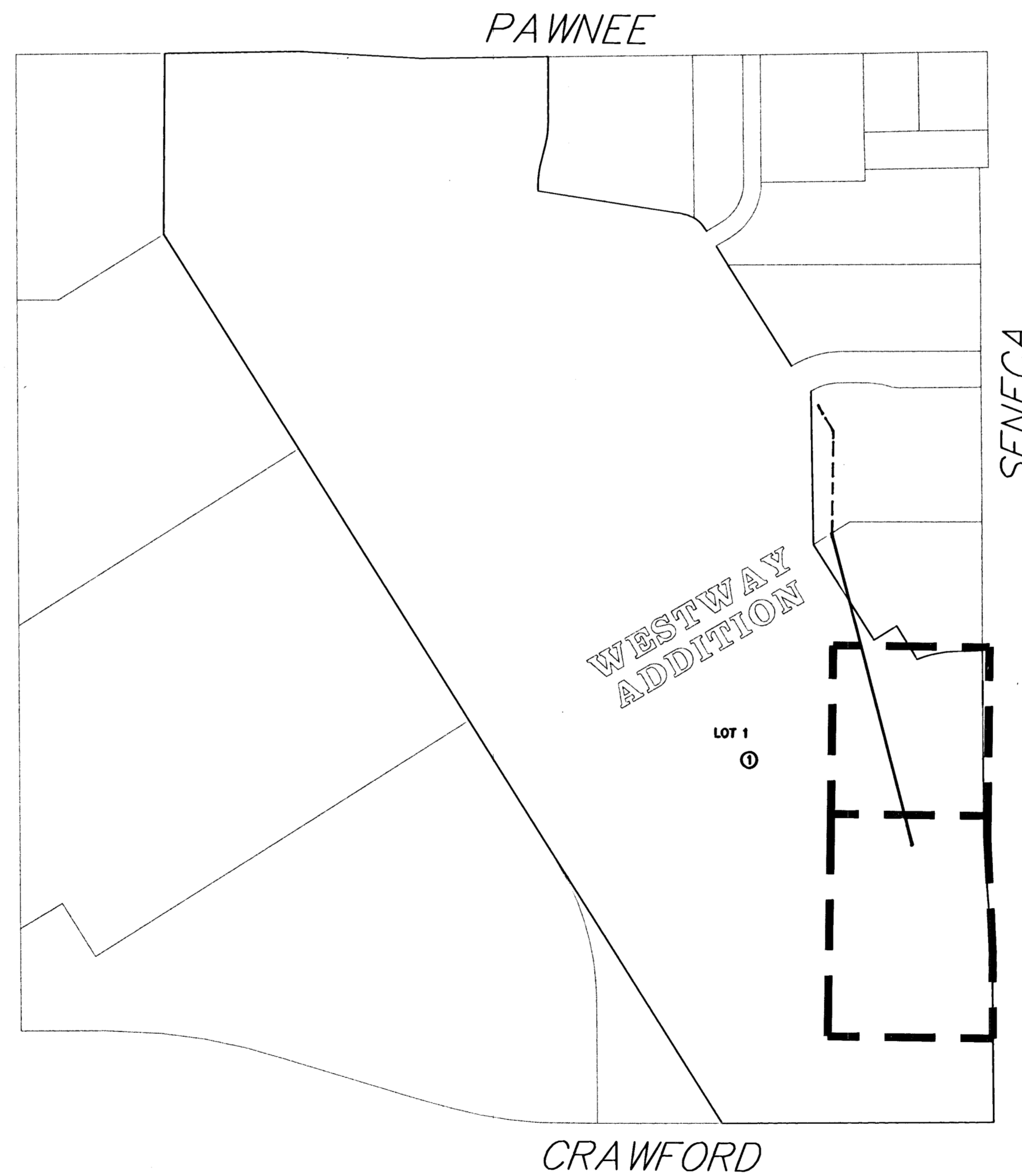
NEIL D. CABLE, P.E., CITY ENGINEER

GENERAL NOTES

1. Contractor will be required to provide notice to utility companies a minimum of twenty-four (24) hours prior to any excavation, as follows:

- | | |
|---|--|
| Southwestern Bell Telephone Co.
154 N. Broadway
Wichita, Kansas 67202
Bob Alley
316-268-2245 | Wichita Sewer Maintenance Div.
Water & Water Pollution Control Dept.
8th Floor, City Hall
455 N. Main St.
Wichita, Kansas 67202
Steve Lashley
316-268-4624 |
| Kansas Gas & Electric Co.
1900 E. Central
Wichita, Kansas 67214
Randy Truitt
316-261-6251
(Electric) | Cox Communications
701 E. Douglas
Wichita, Kansas 67202
Brian Ring
316-262-4270 x.169 |
| Wichita Water & Sewer Dept.
8th Floor, City Hall
455 N. Main St.
Wichita, Kansas 67202
Bill Perkins
316-268-4555 | Kansas Gas Service
1021 E. 26th North
Wichita, Kansas 67219
Charlene Lawless
316-383-8600 or 316-832-3177 |
| Aquila Network (Gas)
1611 S. Hoover
Wichita, Kansas 67209
Calvin Briggs
316-941-7233 | Kansas One Call
800-344-7233
Dig Safe
316-687-2470
Emergency 911 |

- The Contractor must notify the following in case of an emergency:
- All improvements shall be installed in accordance with City of Wichita, Kansas Standard Specifications for Sanitary Sewer Construction.
 - Contractor shall not start work on the project until the project inspector is assigned to the project and is present on the site. Any work done without inspection will be required to be uncovered for inspection.
 - Underground utility service lines and overhead utility pole lines are to be adjusted as necessary by others prior to construction, unless the plans specifically call for their locations, as shown on the plans, represent the best information obtainable for design. Location information has been obtained from the various utility companies and is either from company record drawings or company-provided field locations. The Contractor will be required to work around existing utilities within the right-of-way which do not conflict with proposed construction.
 - The contractor shall be responsible for preserving property irons. The Contractor will be required to re-establish any property irons which are damaged or destroyed by his construction operations. Such irons shall be re-established by a licensed land surveyor in accordance with state law.
 - All areas disturbed by construction operations shall be seeded with rye grass at a rate of 300 lbs/acre immediately following construction in that area. Ground shall be prepared per City of Wichita specifications prior to seeding.
 - Contractor shall verify the location of all utilities prior to beginning construction.
 - 8" pipe shall be American Ductile Iron Pipe Polybond Lining Pipe or approved equal.
 - Asphalt concrete to replaced per City of Wichita Materials and Specifications.

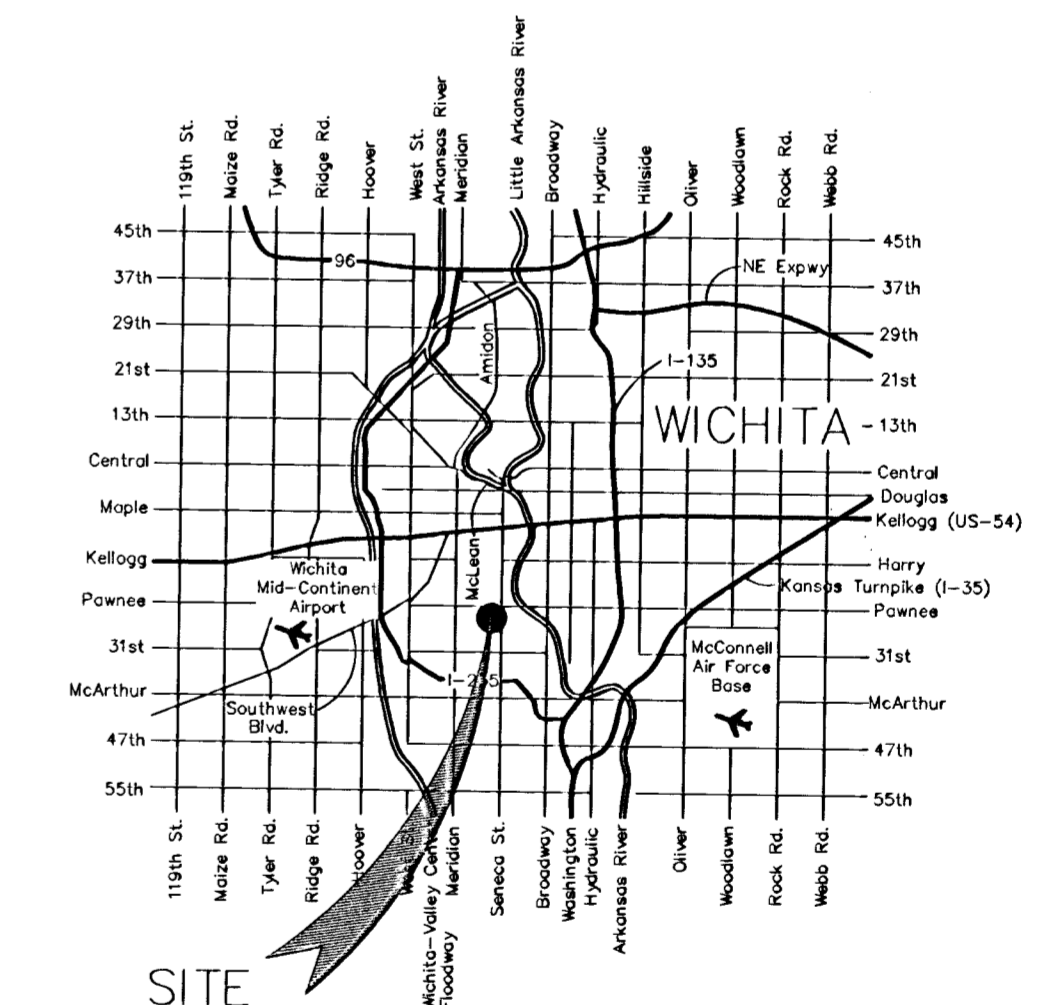


SHEET INDEX

- Title Sheet
- Std. Type 'P' Manhole Details
- Plan & Profile

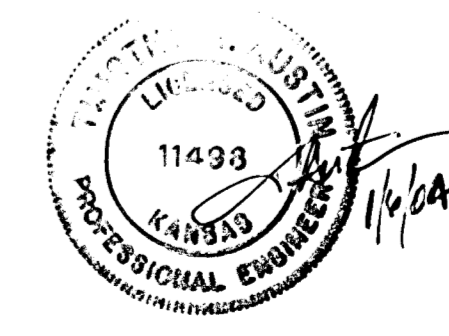


BENCHMARK
COW BENCHMARK, SW CORNER
OF PAWNEE AND SENECA,
LOCATED ON TRAFFIC CONTROL BASE.
ELEV. = 104.76 (CITY DATUM)



VICINITY MAP

AS BUILT
4/15/04
RDL
.PDF



FILENAME: 03008-1116

AM CONSULTING, Inc.
ENGINEERING SERVICES
142 N. Emporia Wichita, KS 67202
316/265-2870 fax: 316/265-2839