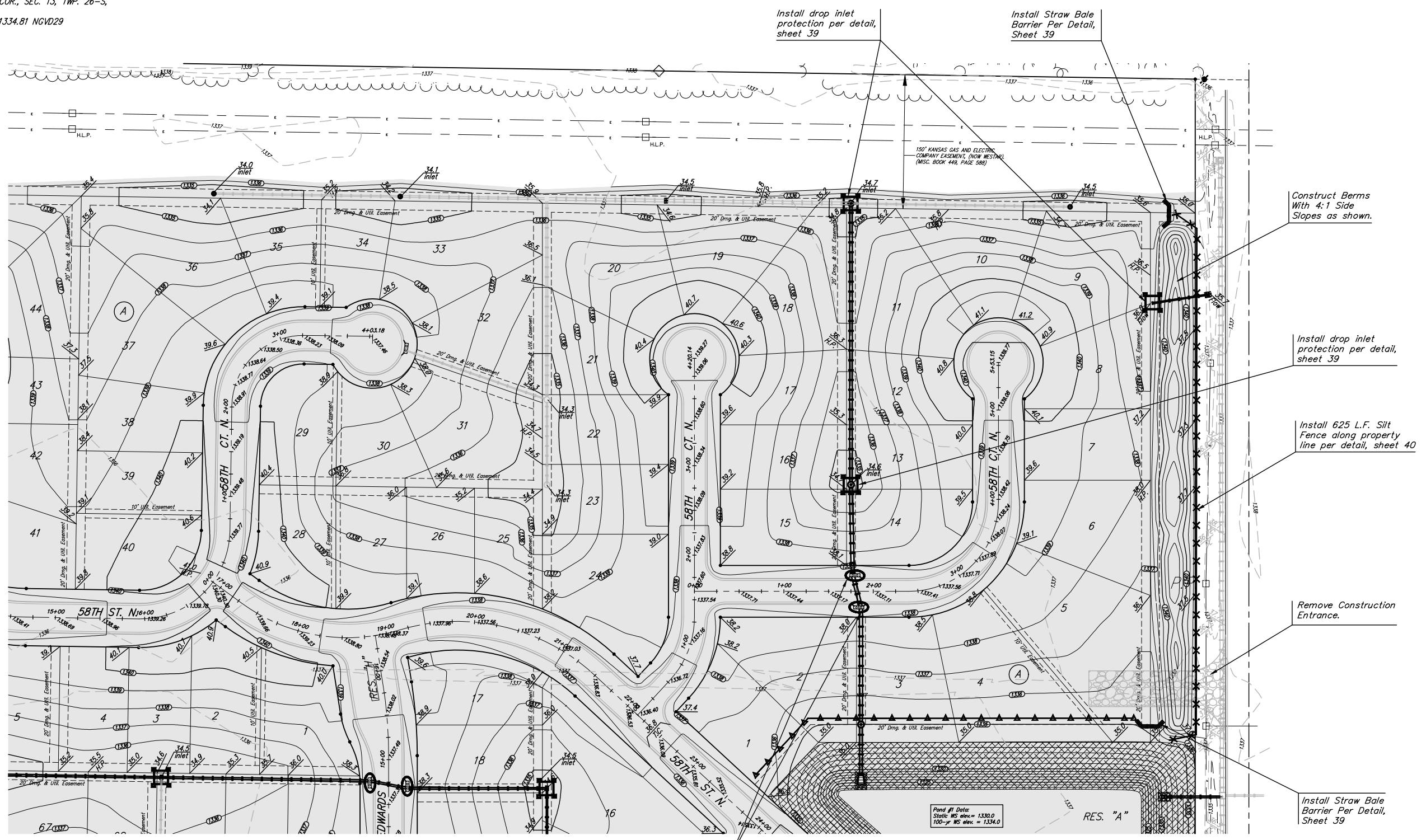
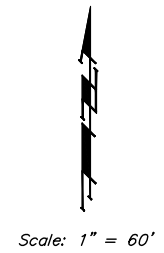


BENCHMARKS:
 BM #1: BENT 60d NAIL IN LIGHT POLE,
 55' SSW. OF THE E1/4 COR., SEC. 13,
 TWP. 26-S, R-1-W.
 ELEV. = 1336.54 NGVD29

BM #2: RAILROAD SPIKE IN E. FACE OF
 N. 7" POLE, 60'± S. OF N. LINE, S1/2,
 NE1/4, SEC. 13, TWP. 26-S, R-1-W
 ELEV. = 1335.93 NGVD29

BM #3: "□" CUT ON TOP OF NE COR.
 OF WATER VAULT, 437'± E. & 54'± N.
 OF S1/4 COR., SEC. 13, TWP. 26-S,
 R-1-W.
 ELEV. = 1334.81 NGVD29



Mass Grading and Erosion Control Plan Legend

- Proposed Storm Sewer
- Proposed Grade
- Existing Grade
- Silt Fence
- Erosion Control Berm
- Straw Bale Barrier
- Drop Inlet Sed. Barrier
- Curb Inlet Sed. Barrier
- Remove Trees
- Area to be graded

EROSION CONTROL MEASURE	UNITS	QUANTITY
INSTALL DROP INLET BARRIER	EA.	3
INSTALL CURB INLET BARRIER	EA.	2
INSTALL STRAW BALE BARRIER	EA.	2
INSTALL SILT FENCE	L.F.	625

QUANTITIES ARE FOR INFORMATION ONLY!
 CONTRACTOR SHALL VERIFY QUANTITIES PER
 FINAL BID QUANTITY SHEET.

Baughman

NORTHGATE ADDITION
Mass Grading
 Storm Water Drain #308

Baughman Company, P.A. 315 8th St. W. Minn. 55 0711 P 3162627271 F 3162620149
 ENGINEERING | SURVEYING | PLANNING | LANDSCAPE ARCHITECTURE

PROJECT NUMBER 468-64254	DESIGN ABG	DRAWN RDM
REVISIONS:	APPROVED ABG	DATE 4-4-07
SCALE NOTED		SHEET 2 OF 48

Northgate\Mass Grading\MASS_FONDS.dwg

Field #1 Data:
 Static WS elev. = 1330.0
 100-yr WS elev. = 1334.0

Install curb inlet protection per detail, sheet 41

Install drop inlet protection per detail, sheet 39

Install Straw Bale Barrier Per Detail, Sheet 39

Construct Berms With 4:1 Side Slopes as shown.

Install drop inlet protection per detail, sheet 39

Install 625 L.F. Silt Fence along property line per detail, sheet 40

Remove Construction Entrance.

Install Straw Bale Barrier Per Detail, Sheet 39