

GENERAL NOTES

- THE CONTRACTOR SHALL COMPLY WITH ALL APPLICABLE SAFETY REGULATIONS. ALL CONSTRUCTION SHALL BE COMPLETED FOLLOWING CURRENT CITY STANDARD SPECIFICATIONS AND SPECIAL PROVISIONS.
- CONTRACTOR WILL BE REQUIRED TO PROVIDE NOTICE TO UTILITY COMPANIES A MINIMUM OF SEVENTY-TWO (72) HOURS PRIOR TO ANY EXCAVATION, AS FOLLOWS:
KANSAS ONE-CALL 687-2470
THE CONTRACTOR MUST NOTIFY THE FOLLOWING IN CASE OF AN EMERGENCY:
AT&T 1-800-246-8464
BLACK HILLS ENERGY (GAS) 1-800-694-8989
CITY OF WICHITA WATER & SEWER 1-316-219-8921
CITY OF WICHITA STORMWATER 1-316-268-4090
CITY OF WICHITA TRAFFIC 1-316-268-4034
COX COMMUNICATIONS 1-888-249-3530
KANSAS GAS SERVICE 1-888-482-4950
WESTAR ENERGY 1-800-544-4857
- UTILITY SERVICE LINES, POLES, ETC. ARE TO BE ADJUSTED AS NECESSARY BY OTHERS PRIOR TO CONSTRUCTION UNLESS THE PLANS SPECIFICALLY CALL FOR THEIR ADJUSTMENT BY THE CONTRACTOR OR UNLESS THE PLANS SPECIFICALLY IDENTIFY A UTILITY TO BE ADJUSTED BY ITS OWNER DURING CONSTRUCTION. EXISTING UTILITIES AND THEIR LOCATION, AS SHOWN ON THE PLANS, REPRESENT THE BEST INFORMATION OBTAINABLE FOR DESIGN. THE CONTRACTOR WILL BE REQUIRED TO WORK AROUND EXISTING UTILITIES WITHIN THE RIGHT-OF-WAY WHICH DO NOT CONFLICT WITH PROPOSED CONSTRUCTION.
- RUBBLE FROM THE REMOVAL OF MISCELLANEOUS STRUCTURES AND EXCESS EXCAVATION WHICH IS TO BE WASTED SHALL BE DISPOSED OF ON SITES TO BE PROVIDED BY THE CONTRACTOR. THESE SITES SHALL BE APPROVED BY THE ENGINEER AS TO SUITABILITY, APPEARANCE AND SITE LOCATION. LOCATIONS, IN THE OPINION OF THE ENGINEER, THAT WILL LEAVE AN UNSIGHTLY APPEARANCE WILL NOT BE APPROVED. ALL DISPOSAL SITES MUST BE APPROVED BY THE KANSAS DEPARTMENT OF HEALTH AND ENVIRONMENT. MATERIAL EITHER STOCKPILED OR DISPOSED OF IN A FLOOD PLAIN WILL REQUIRE A KANSAS STATE BOARD OF AGRICULTURE PERMIT. ANY MATERIAL DUMPED IN WATERS OF THE UNITED STATES OR WETLANDS IS SUBJECT TO U.S. CORPS OF ENGINEERS PERMITTING REGULATIONS. ANY MATERIAL BURIED OR STOCKPILED BEYOND APPROVED CONSTRUCTION LIMITS WILL REQUIRE ADDITIONAL ARCHAEOLOGICAL INVESTIGATIONS UNLESS BURIED IN A PREVIOUSLY APPROVED BORROW LOCATION.
- TREES AND SHRUBS IN PUBLIC RIGHT-OF-WAY WHICH ARE IN DIRECT CONFLICT WITH PROPOSED NEW CONSTRUCTION SHALL BE REMOVED BY THE CONTRACTOR WITH THE CITY ENGINEER'S APPROVAL. TREES AND SHRUBS WHICH ARE NOT IN DIRECT CONFLICT WITH PROPOSED NEW CONSTRUCTION SHALL BE SAVED AND PROTECTED FROM DAMAGE.
- THE CONTRACTOR SHALL GIVE ALL PROPERTY OWNERS AND/OR TENANTS OF DEVELOPED PROPERTY ADJUTING THE CONSTRUCTION OF THIS PROJECT A MINIMUM OF TEN (10) DAYS NOTICE PRIOR TO START OF CONSTRUCTION.
- THE CONTRACTOR SHALL BE RESPONSIBLE FOR PRESERVING PROPERTY IRONS. THE CONTRACTOR WILL BE REQUIRED TO RE-ESTABLISH ANY PROPERTY IRONS WHICH ARE DAMAGED OR DESTROYED BY HIS CONSTRUCTION OPERATIONS. SUCH IRONS SHALL BE RE-ESTABLISHED BY A LICENSED LAND SURVEYOR IN ACCORDANCE WITH STATE LAWS.
- THE ENGINEERING DIVISION SHALL FIELD LOCATE WATER VALVES ONE TIME DURING CONSTRUCTION WHEN REQUESTED BY THE CONTRACTOR. IT SHALL BE THE CONTRACTOR'S RESPONSIBILITY TO PRESERVE SUCH FIELD LOCATIONS DURING THE CONSTRUCTION PROCESS. WATER VALVES, VALVE BOXES OR FIRE HYDRANTS DAMAGED DURING CONSTRUCTION SHALL BE REPAIRED BY CONTRACTOR AT HIS OWN EXPENSE. VALVE BOXES AND WATER METERS WITHIN THE PROJECT LIMITS SHALL BE ADJUSTED TO MATCH FIELD GRADES BY THE CONTRACTOR.
- IF TRAFFIC WILL BE IMPACTED BY CONSTRUCTION, A TRAFFIC CONTROL PLAN MUST BE SUBMITTED AND APPROVED BY THE CITY TRAFFIC ENGINEER, BRIAN COON AT traffic@wichita.gov BEFORE CONSTRUCTION CAN BEGIN. THE CONTRACTOR SHALL BE RESPONSIBLE FOR ALL TRAFFIC CONTROL MEASURES TO FACILITATE CONSTRUCTION. ALL CONSTRUCTION ZONE MARKINGS AND SIGNAGE SHALL CONFORM TO THE LATEST VERSION OF THE MANUAL ON UNIFORM TRAFFIC CONTROL DEVICES (MUTCD) AS PUBLISHED BY THE US DEPT. OF TRANSPORTATION, FEDERAL HIGHWAY ADMINISTRATION. ALL COSTS ASSOCIATED WITH CONSTRUCTION MARKINGS AND SIGNAGE SHALL BE THE CONTRACTOR'S RESPONSIBILITY.
- ALL AREAS DISTURBED DURING CONSTRUCTION THAT WILL NOT BE UNDER PROPOSED PAVEMENT SHALL BE SEEDED AND MULCHED. COST SHALL BE CONSIDERED SUBSIDIARY TO PROJECT SEEDING.
- CONTRACTOR SHALL LIMIT THE EXTENT OF TRENCH OPEN OVERNIGHT AND WEEKENDS TO LESS THAN 50 FEET.
- EXISTING UTILITIES AND THEIR LOCATION, AS SHOWN ON THE PLANS REPRESENT THE BEST INFORMATION OBTAINABLE FOR DESIGN. LOCATION INFORMATION HAS BEEN OBTAINED FROM THE VARIOUS COMPANIES AND IS EITHER FROM COMPANY UTILITY DRAWINGS OR COMPANY PROVIDED FIELD LOCATIONS. THE PLAN LOCATIONS SHOWN ARE NOT GUARANTEED. ADDITIONAL EXISTING UTILITIES MAY ALSO BE ENCOUNTERED.
- A PORTION OF EXCESS EXCAVATED MATERIAL SHALL BE MOUNDED AROUND MANHOLES WHICH EXTEND MORE THAN ONE (1) FOOT ABOVE THE EXISTING GROUND. SUCH MOUND SHALL BE CONSTRUCTED WITH NEW DEVELOPMENT A SIX (6) FOOT DIAMETER FLAT TOP WITH 4 TO 1 SIDE SLOPES DOWN TO THE ORIGINAL GROUND. THE ELEVATION OF THE FLAT TOP OF THE MOUND SHALL BE 0.4 FOOT BELOW THE TOP OF THE MANHOLE.
- CONTRACTOR SHALL PROVIDE POSITIVE DRAINAGE AWAY FROM ALL MANHOLE COVERS.
- ALL STUBS AND PLUGGED PIPES SHALL BE LOCATED WITH GREEN PLASTIC TAPE IN THE SAME MANNER AS RISERS.
- CONNECTING TO EXISTING MANHOLES:
PRIOR TO LAYING SEWER LINES USING EXISTING STUBS IN EXISTING MANHOLES, THE CONTRACTOR SHALL EXPOSE AND VERIFY THE ELEVATION, GRADE AND ALIGNMENT OF EXISTING STUBS AND NOTIFY THE ENGINEER OF ANY DEVIATION FROM THE PLANS. WHERE CONNECTION TO AN EXISTING MANHOLE THAT DOES NOT HAVE AN EXISTING STUB OR THE STUB IS UNUSABLE DUE TO ELEVATION GRADE OR ALIGNMENT, THE CONTRACTOR SHALL BORE CUT INTO EXISTING MANHOLE WALL TO MAKE CONNECTION USING APPROVED WATER STOP GASKET, AND RESHAPE THE EXISTING MANHOLE INVERT TO PROVIDE SMOOTH FLOW. THE COST TO CONNECTING TO EXISTING MANHOLES IS INCIDENTAL TO THE PROJECT.
- THE CONTRACTOR SHALL PREVENT ANY CONSTRUCTION DEBRIS FROM ENTERING THE EXISTING SANITARY SEWER DURING CONSTRUCTION.
- THE CONTRACTOR SHALL BE RESPONSIBLE FOR MAINTAINING CONTINUOUS FLOW OF SEWAGE THROUGH CONSTRUCTION. CONTRACTOR'S PROPOSED METHOD FOR MAINTAINING SEWAGE FLOW SHALL BE SUBMITTED AND APPROVED BY THE SEWER MAINTENANCE DIVISION (316-268-4073) PRIOR TO STARTING AND BY-PASSING OF SEWAGE FLOWS.
- ALL TRAFFIC CONTROL DEVICES IN THE WORK ZONE (INCLUDING MARKINGS AND SIGNS) AND THEIR INSTALLATION AND MAINTENANCE SHALL COMPLY WITH THE LATEST EDITION OF THE MANUAL ON UNIFORM TRAFFIC CONTROL DEVICES (MUTCD). ALL TRAFFIC CONTROL DEVICES IN THE TRAVELED WAY OR CLEAR ZONE SHALL BE CRASHWORTHY (NCHRP REPORT 350 OR MASH COMPLIANT).
http://safety.fhwa.dot.gov/roadwaydept/policy/guide/road_hardware/wzd
- ALL CONSTRUCTION EQUIPMENT, INCLUDING VEHICLES, MATERIALS, AND DEBRIS, SHALL BE STORED OUTSIDE OF THE CLEAR ZONE. WHERE THIS CANNOT BE ACHIEVED THE CONTRACTOR SHALL PLACE APPROPRIATE SIGNS, OBJECT IDENTIFIERS, AND/OR BARRICADES IN COMPLIANCE WITH MUTCD.
- EXCEPT WHEN REQUIRED FOR SAFETY, TRAFFIC CONTROL SHALL NOT BLOCK ANY LANES OR SIDEWALKS WHEN WORK IS NOT BEING PERFORMED.
- FOLLOW THE LINK BELOW FOR DETAILS ON SPECIFIC CITY OF WICHITA STANDARD DETAILS:
<http://www.wichita.gov/PWU/Pages/Regulations.aspx>
- DEVELOPER FOR THIS PROJECT IS:
SCHELLENBERG PROPERTIES, LLC
7926 WEST 21st STREET
WICHITA, KANSAS, 67205
MARVIN L. SCHELLENBERG, MEMBER
316-721-2153

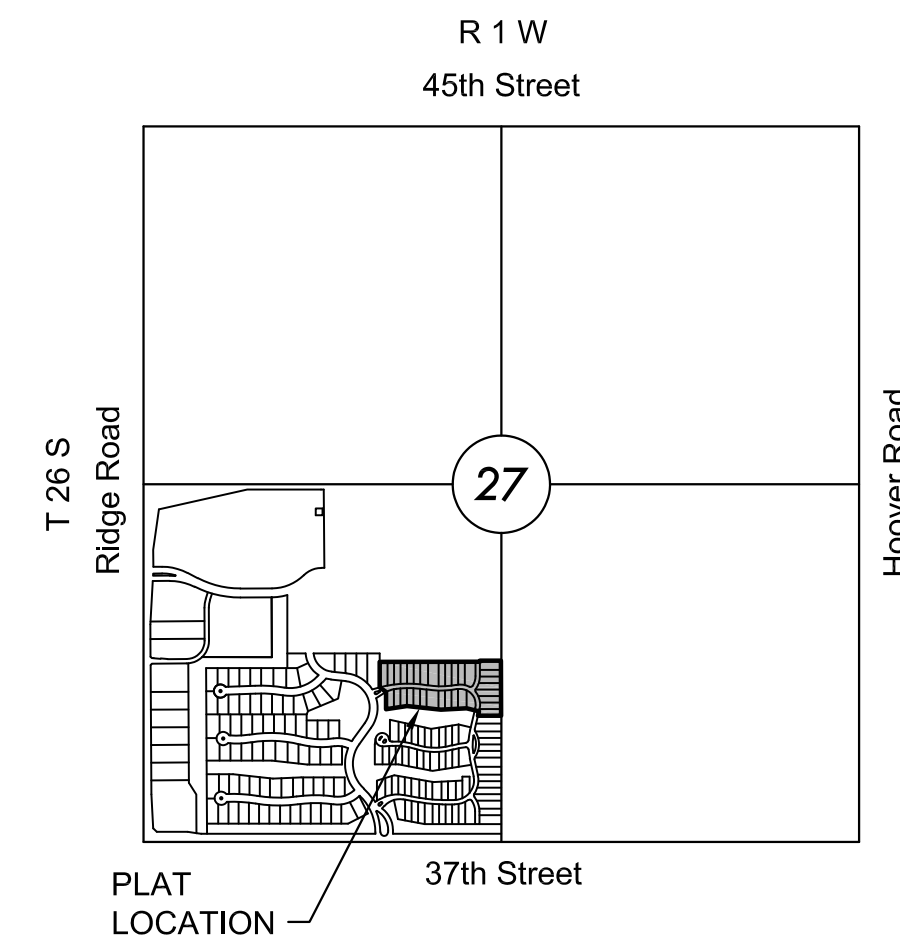
SANITARY SEWER

TO SERVE

ESTANCIA ADDITION

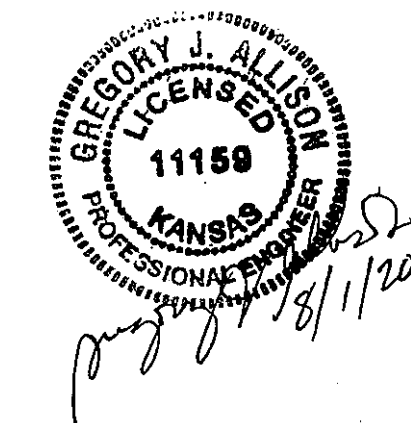
LATERAL 549, SWI
PROJECT NO. 468-85077
THE CITY OF WICHITA, KANSAS
GARY JANZEN, P.E. - CITY ENGINEER
OCA NO. 744481

Nowak Construction - Contractor
J. Wagner/B. Woods - City of Wichita, Field Project Engineers
J. Therrell Sr. - MKEC, Inspector
As-built
Stubs & Risers
Release Date: 12/6/2018
Completion Date: 4/26/2019
pdf: 1/10/2019 apr



VICINITY MAP

No Scale

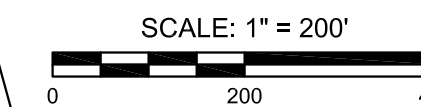


INDEX TO DRAWINGS

SHEET NO.	DESCRIPTION
01	TITLE SHEET
02-05	DETAILS
06-07	LINE 1
08	LINE 2
09-10	BUBBLE MAP
11-15	BMP SHEETS
16-17	FINAL PLAT

BENCHMARKS

- BM1 (PLATTED)
SQUARE CUT TOP OF CURB, ON WEST SIDE OF MEDIAN ISLAND AND 10 FEET NORTH OF THE SOUTH END OF THE MEDIAN, LYING SOUTH OF THE K-96 AND RIDGE RD. 338 FEET SOUTH OF THE NW COR. OF THE SW 1/4, SEC. 27, TWP. 26S, RGE 1W, 6TH P.M.
ELEV. = 1335.80' NAVD 88
- BM2
SQUARE CUT TOP OF CURB AT EAST END OF NOSE OF ISLAND, SOUTH DRIVE TO RIDGEWOOD MEDICAL BUILDING, 4031 N. RIDGE RD. WEST SIDE OF RIDGE RD.
ELEV. = 1336.03' NAVD 88
- BM3
RR SPIKE IN NW FACE OF 3RD POWER POLE NORTH OF 37TH/RIDGE RD INTERSECTION, EAST SIDE OF RIDGE RD.
ELEV. = 1332.68' NAVD 88
- BM4
SQUARE CUT NORTHEAST CORNER OF TRAFFIC SIGNAL VAULT AT NORTHEAST CORNER OF 37TH/RIDGE RD INTERSECTION. 12 FEET EAST OF TRAFFIC POLE BASE.
ELEV. = 1330.34' NAVD 88
- BM5
SQUARE CUT TOP OF CURB AT NORTH NOSE OF ISLAND AT DRIVE TO MID-KANSAS PEDIATRIC ASSOCIATES AT 6837 W 37TH ST. N.
ELEV. = 1336.07' NAVD 88
- BM6
SQUARE CUT TOP OF CURB ON EAST SIDE OF RIDGEPORT STREET AT END OF CURB AT SOUTHEAST CORNER OF RIDGEPORT ST. AND 37TH ST. N. INTERSECTION.
ELEV. = 1333.08' NAVD 88
- VERTICAL DATUM: NAVD 88



SE Cor., SW 1/4,
Sec. 27, T26S, R1W



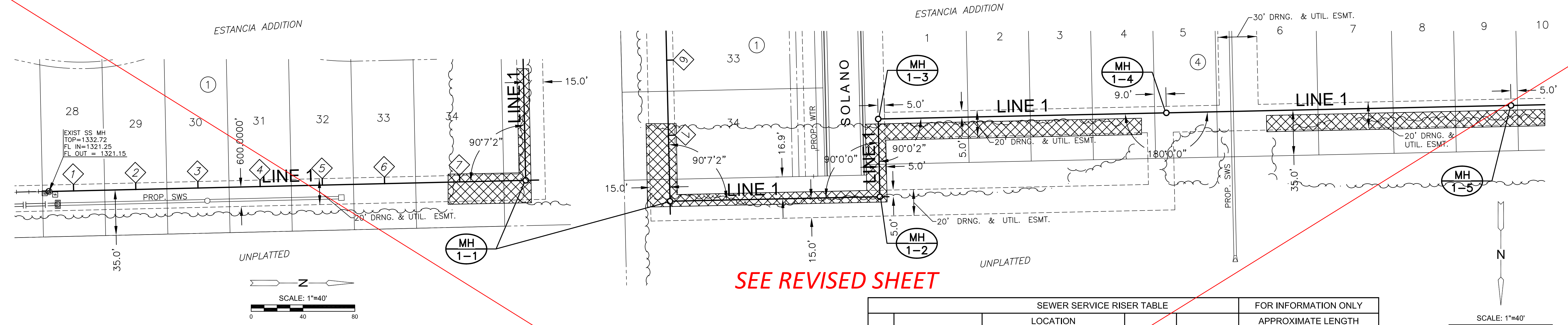
SANITARY SEWER PLANS FOR
ESTANCIA ADDITION
 PHASE 3A

©2018
MKEC Engineering
All Rights Reserved
www.mkec.com
These drawings and their contents, including, but not limited to, all concepts, designs, & ideas are the exclusive property of MKEC Engineering (MKEC), and may not be used or reproduced in any way without the express consent of MKEC.

TITLE SHEET

PROJECT NO.	468-85077	
DATE	JUNE 2018	
SCALE	1" = 200'	
DESIGNED	DRAWN	CHECKED
JWC	JWC	DFL
NO.	REVISION	DATE
SHEET NO.		
01 OF 17		

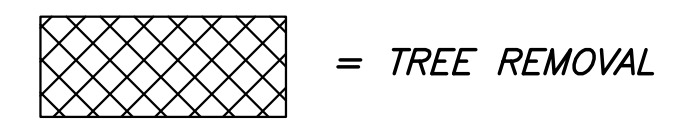
PLOT DATE: Wednesday, August 01, 2018 @ 08:17 AM



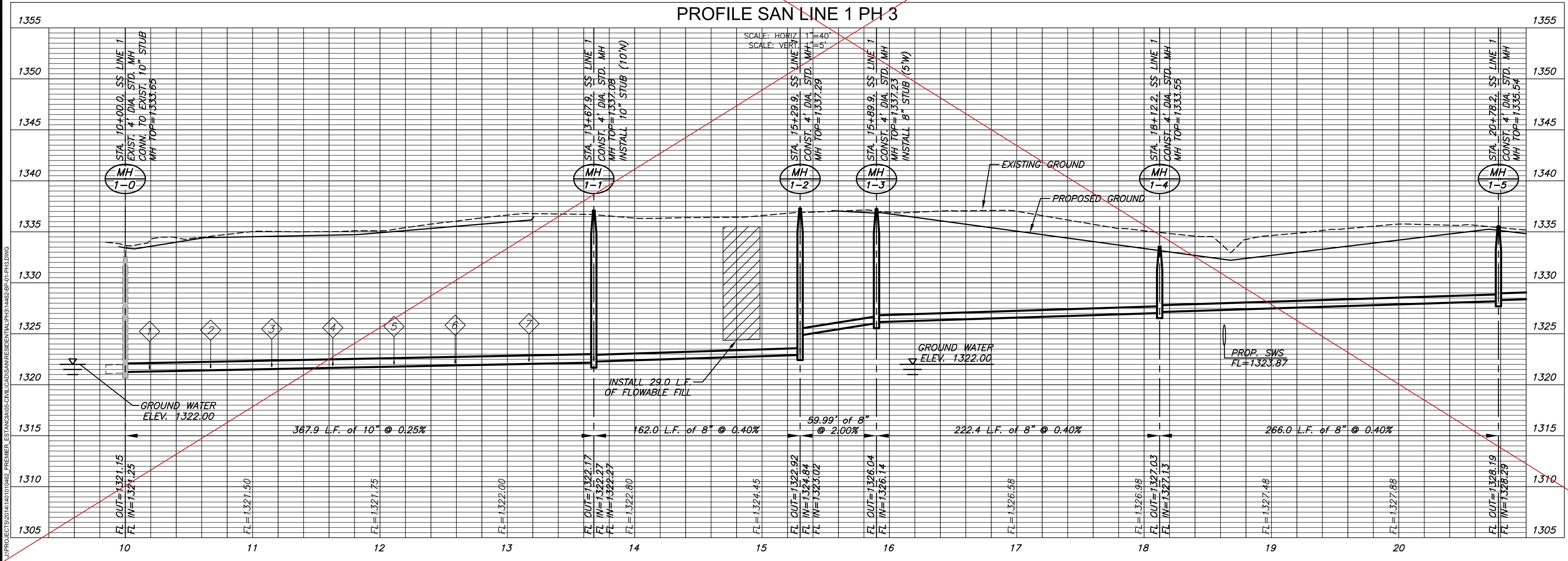
SEE REVISED SHEET

NO.	TYPE	LOCATION				DIRECTION	FOR INFORMATION ONLY	
		LOT NO.	BLOCK NO.	LINE NO.	STATION		APPROXIMATE LENGTH	
1	4" TEE	28	1	1	10+19	W	11'	5'
2	4" TEE	29	1	1	10+67	W	11'	5'
3	4" TEE	30	1	1	11+15	W	11'	5'
4	4" TEE	31	1	1	11+63	W	11'	5'
5	4" TEE	32	1	1	12+11	W	12'	5'
6	4" TEE	33	1	1	12+9	W	12'	5'
7	4" TEE	34	1	1	13+17	W	12'	5'

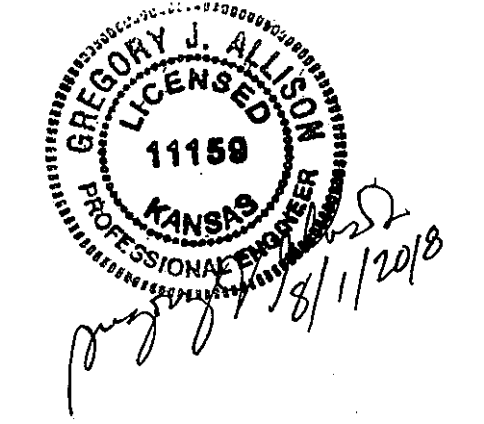
NOTE:
CONTRACTOR TO VERIFY THE DEPTH AND LOCATION OF EXISTING UTILITIES PRIOR TO CONSTRUCTION.



PLAN SAN LINE 1 PH 3
PROFILE SAN LINE 1 PH 3

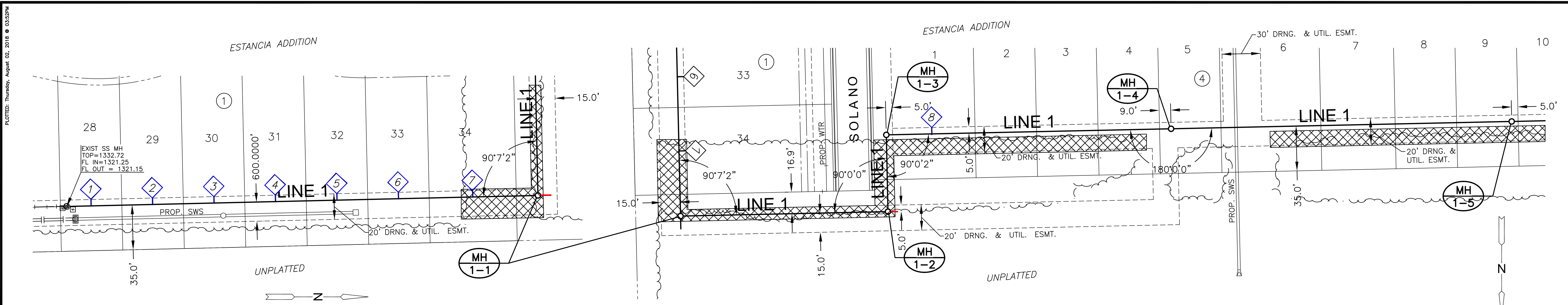


SANTARY SEWER PLANS FOR
ESTANCIA ADDITION
PHASE 3A




©2018 MKEC Engineering All Rights Reserved
These drawings and their contents, including, but not limited to, all concepts, designs, & ideas are the exclusive property of MKEC Engineering (MKEC), and may not be used or reproduced in any way without the express consent of MKEC.

SAN LINE 1	
PROJECT NO.	468-85077
DATE	JUNE 2018
SCALE	1" = 40'
DESIGNED	DRAWN
JWC	JWC
CHECKED	DFL
NO.	REVISION
DATE	
SHEET NO. 06 OF 17	

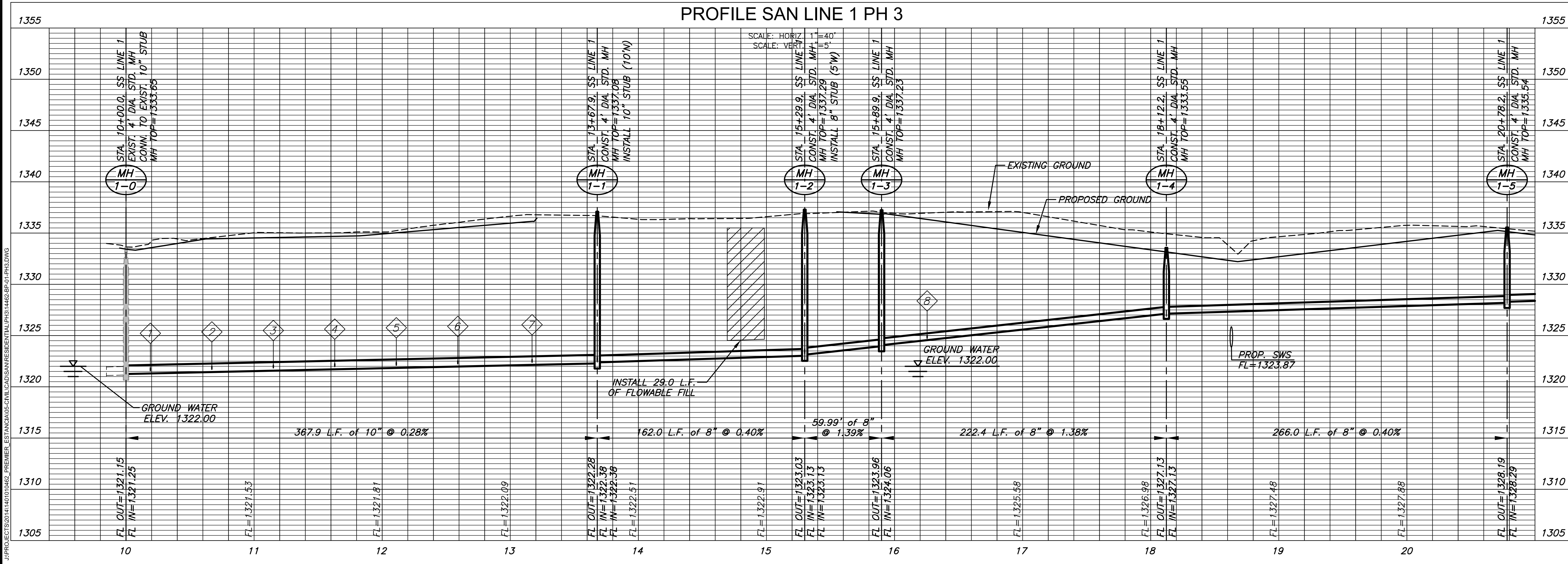


Distance from Main to Riser (Lt./Rt.)	Distance from		SEWER SERVICE RISER TABLE						FOR INFORMATION ONLY		
	Upstream MH	Downstream MH	NO.	TYPE	LOCATION			DIRECTION	APPROXIMATE LENGTH		
					LOT NO.	BLOCK NO.	LINE NO.		VERTICAL (FT)	HORIZONTAL (FT)	
6' W	18'	349'	1	4" TEE	28	1	1	10+19	W	11'	5'
6' W	68'	299'	2	4" TEE	29	1	1	10+67	W	11'	5'
6' W	111'	257'	3	4" TEE	30	1	1	11+15	W	11'	5'
6' W	159'	210'	4	4" TEE	31	1	1	11+63	W	11'	5'
6' W	206'	163'	5	4" TEE	32	1	1	12+11	W	12'	5'
4' W	253'	117'	6	4" TEE	33	1	1	12+9	W	12'	5'
4' W	314'	57'	7	4" TEE	34	1	1	13+17	W	12'	5'
8' S	25'	190'	8	4" TEE	1	4	1	16+25	S	10'	5'

NOTE:
CONTRACTOR TO VERIFY THE DEPTH AND LOCATION OF EXISTING UTILITIES PRIOR TO CONSTRUCTION.

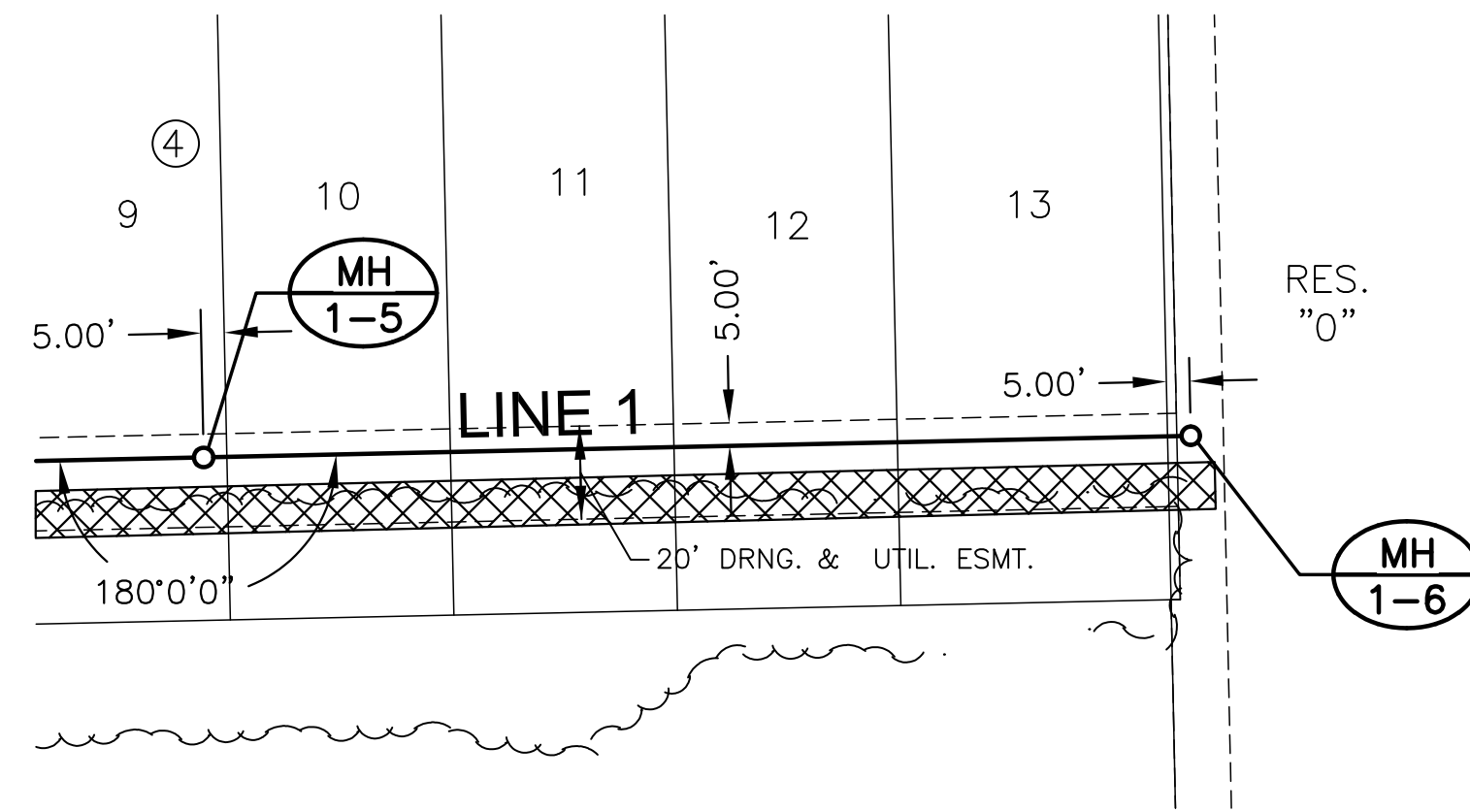
 = TREE REMOVAL

PLAN SAN LINE 1 PH 3
PROFILE SAN LINE 1 PH 3

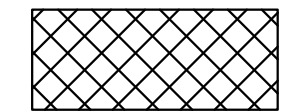


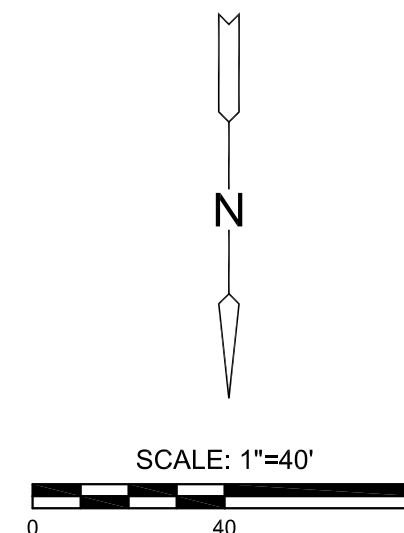
©2018 MKEC Engineering All Rights Reserved
www.mkec.com
These drawings and their contents, including, but not limited to, all concepts, designs, & ideas are the exclusive property of MKEC Engineering (MKEC), and may not be used or reproduced in any way without the express consent of MKEC.

SAN LINE 1	
PROJECT NO.	468-85077
DATE	JUNE 2018
SCALE	1" = 40'
DESIGNED	DRAWN
JWC	JWC
CHECKED	DFL
NO.	REVISION
DATE	
SHEET NO.	
06 OF 17	

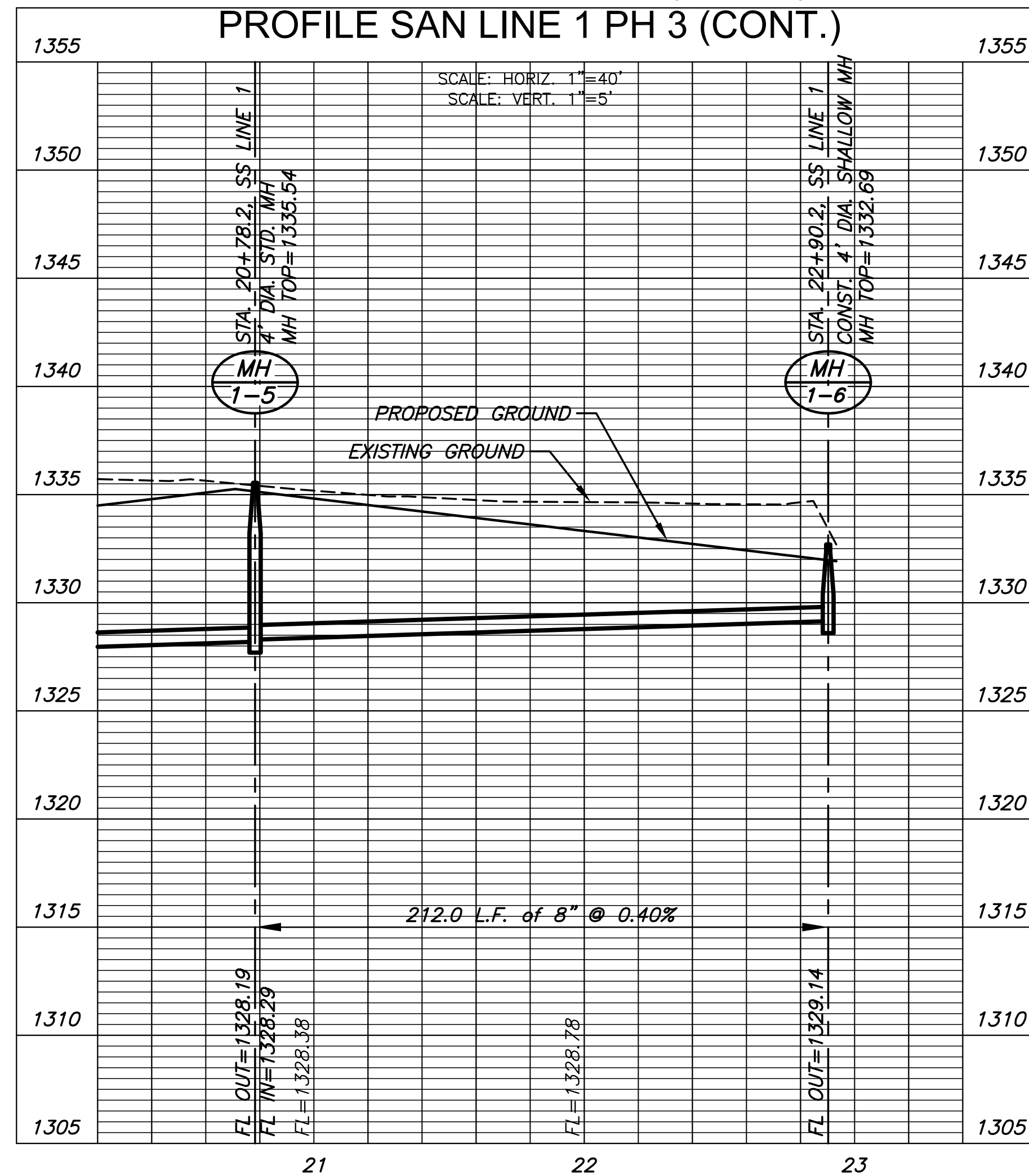


NOTE:
CONTRACTOR TO VERIFY THE DEPTH AND LOCATION OF EXISTING UTILITIES PRIOR TO CONSTRUCTION.

 = TREE REMOVAL



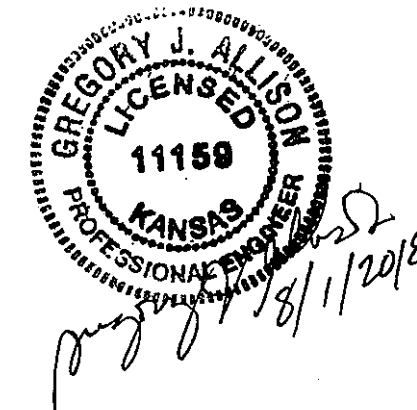
PLAN SAN LINE 1 PH 3 (CONT.)
PROFILE SAN LINE 1 PH 3 (CONT.)



©2018 MKEC Engineering All Rights Reserved www.mkec.com
These drawings and their contents, including, but not limited to, all concepts, designs, & ideas are the exclusive property of MKEC Engineering (MKEC), and may not be used or reproduced in any way without the express consent of MKEC.

SAN LINE 1 (CONT.)

PROJECT NO.	468-85077	
DATE	JUNE 2018	
SCALE	1" = 40'	
DESIGNED	DRAWN	CHECKED
JWC	JWC	DFL

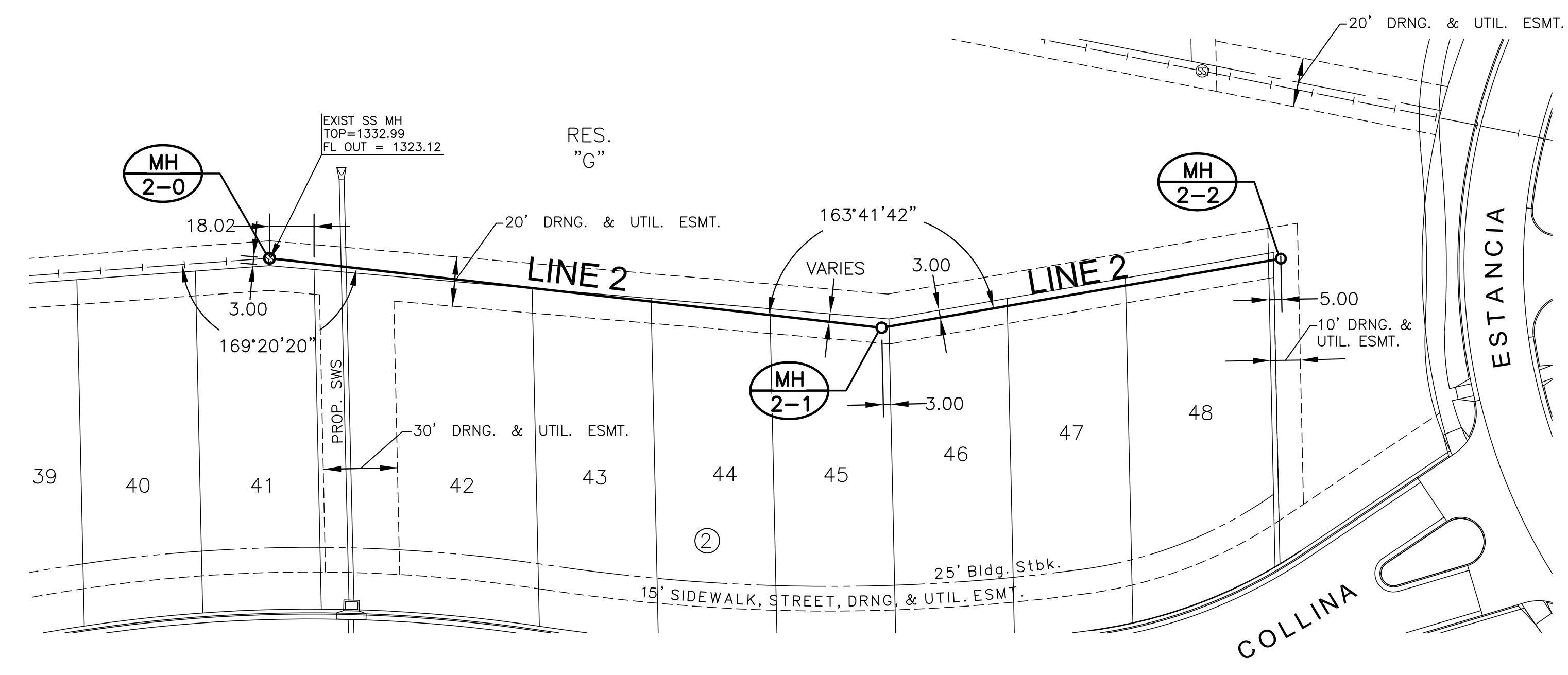

GREGORY J. ALLISON
LICENSED PROFESSIONAL ENGINEER
KANSAS
11159
6/20/18

NO.	REVISION	DATE
-----	----------	------

SHEET NO.
07 OF 17

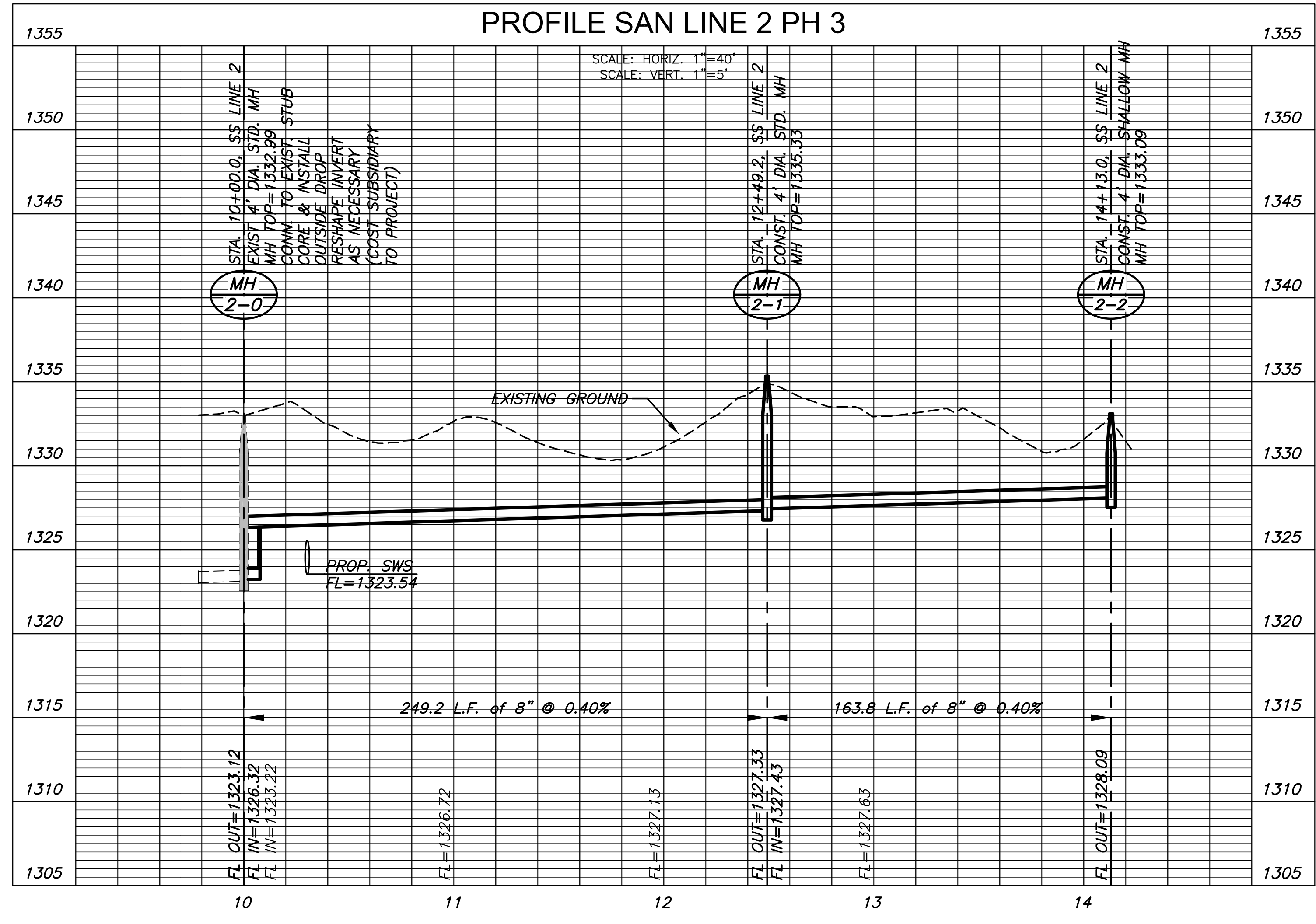
PLOTTED: Wednesday, August 01, 2018 @ 08:12AM

J:\PROJECTS\2018\14010462_PREMIER_ESTANCIA05-CIVIL\CAD\SAN\RESIDENTIAL\PH3\14462-SP-04-PH3.DWG



NOTE:
CONTRACTOR TO VERIFY THE
DEPTH AND LOCATION OF EXISTING
UTILITIES PRIOR TO CONSTRUCTION.

PLAN SAN LINE 2 PH 3
PROFILE SAN LINE 2 PH 3



GREGORY J. ALLISON
LICENSED PROFESSIONAL ENGINEER
KANSAS
11159

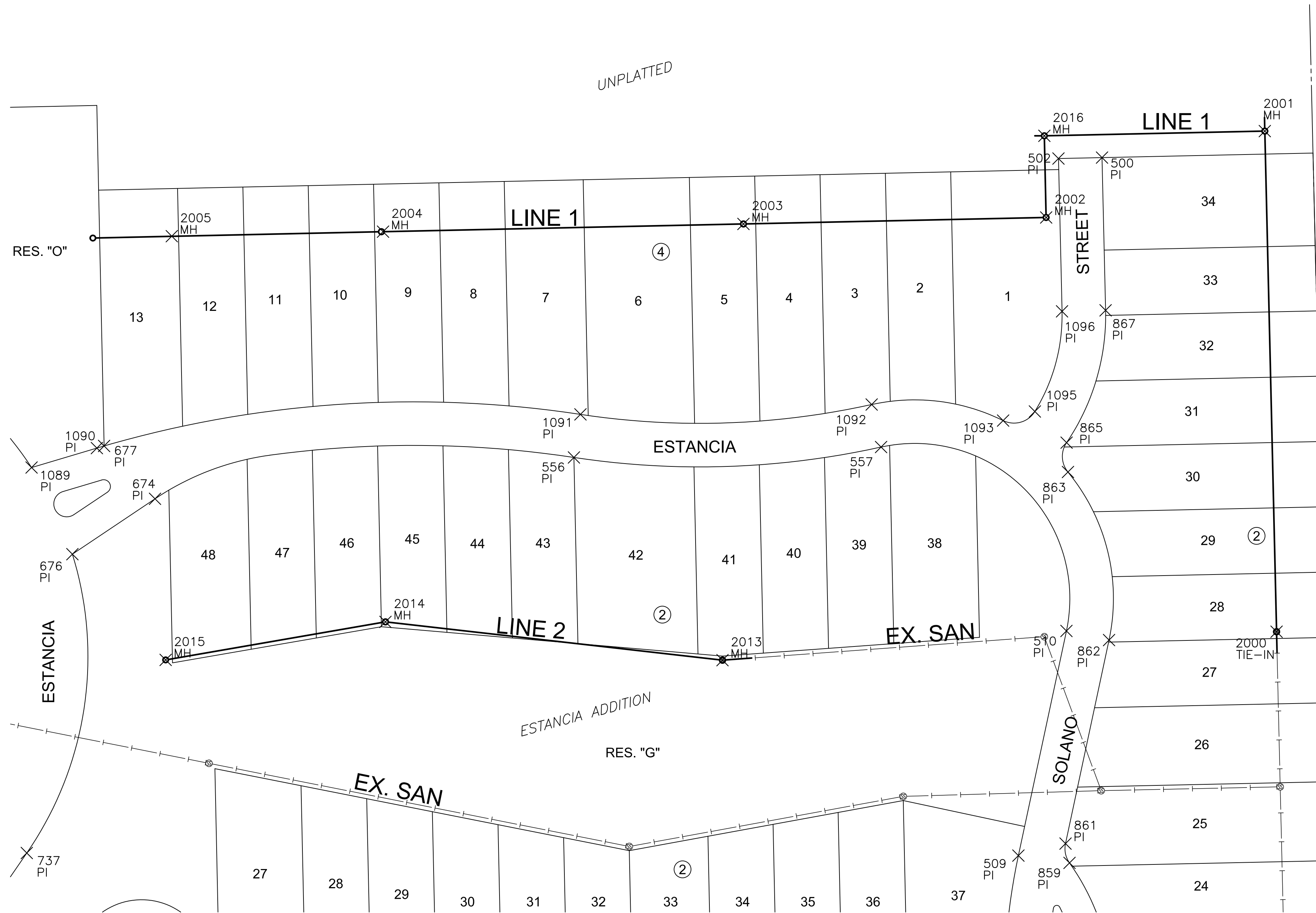
©2018 MKEC Engineering All Rights Reserved www.mkec.com
These drawings and their contents, including, but not limited to, all concepts, designs, & ideas are the exclusive property of MKEC Engineering (MKEC), and may not be used or reproduced in any way without the express consent of MKEC.

SAN LINE 2	
PROJECT NO.	468-85077
DATE	JUNE 2018
SCALE	1" = 40'
DESIGNED	RWB
DRAWN	RWB
CHECKED	DFL
NO.	REVISION DATE
SHEET NO. 08 OF 17	

PLOTTED: Wednesday, August 01, 2018 @ 08:12AM

J:\PROJECTS\2018\1401010482_PREMIER_ESTANCIA05-CIVIL\CAD\SAN\RESIDENTIAL\PH3\14462-EB-01-PH3.DWG

SANITARY SEWER PLANS FOR
ESTANCIA ADDITION
PHASE 3A



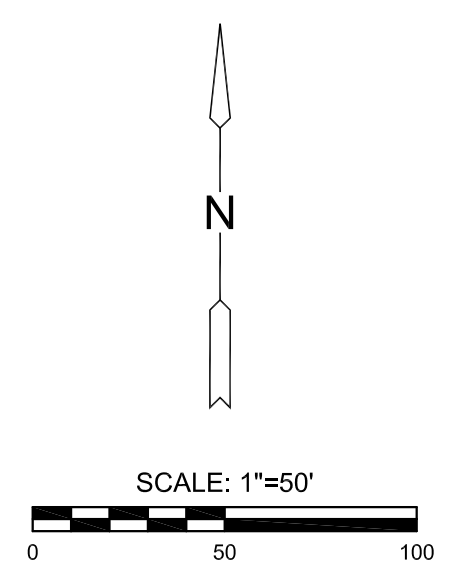
GREGORY J. ALLISON
LICENSED
11159
KANSAS
PROFESSIONAL ENGINEER
8/1/2018

CONTROL POINTS

- | | |
|-----------------------------------------------------------------------------------------------------------------------------------------------------------------------------------------------------------------------------------------------------------------------------------------------------------|---------------------------------------------------------------------------------------------------------------------------------------------------------------------------------------------------------------------------------|
| <p>CP #100
5/8" rebar with MKEC Aluminum Cap
N = 1709596.07 E = 1624178.12 Elev. = 1334.38
South side of 37th Street N., West of entrance drive to Mid Kansas Pediatric Association at address 6837 W 37th St N.
36 feet NW of fire hydrant
6 feet south of south edge of asphalt</p> | <p>CP #102
5/8 inch rebar with MKEC Aluminum Cap
N = 1710347.41' E = 1622982.67' Elev. = 1330.50
East Ridge Road in flowline of ditch
45 feet northwest of 3rd powerpole north of 37th Street N</p> |
| <p>CP #101
5/8 inch rebar with MKEC Aluminum Cap
N = 1709656.12 E = 1625269.09 Elev. = 1331.35'
North side of 37th St. N
5 feet north of north edge of asphalt
On extended line to the north with the centerline of Ridgeport Street</p> | <p>Horizontal and Vertical Datum:

Horizontal Datum: Kansas Coordinate System 1983 South Zone.
(Horizontal coordinates modified to ground using a scale factor of 1.000120014)

Vertical Datum: NAVD 88</p> |



EVERY ATTEMPT HAS BEEN MADE TO INSURE ALL COORDINATE VALUES SHOWN ARE AN ACCURATE AND TRUE REPRESENTATION OF THE CURRENT PLANS. ALL VALUES ARE TO BE CONFIRMED WITH THE FINAL SIGNED PLAN SET BEFORE USE.

©2018 MKEC Engineering All Rights Reserved www.mkec.com
These drawings and their contents, including, but not limited to, all concepts, designs, & ideas are the exclusive property of MKEC Engineering (MKEC), and may not be used or reproduced in any way without the express consent of MKEC.

BUBBLE MAP

PROJECT NO.	468-85077	
DATE	JUNE 2018	
SCALE	1" = 50'	
DESIGNED	DRAWN	CHECKED
JWC	RWB	DFL
NO.	REVISION	DATE

PLAT POINTS			
Point #	Northing	Easting	Desc.
500	1710968.02	1625399.69	PI
502	1710967.33	1625367.70	PI
509	1710455.21	1625338.27	PI
510	1710620.23	1625373.56	PI
511	1710379.97	1625328.49	PI
513	1710362.90	1625312.10	PI
540	1710255.13	1625378.27	PI
552	1710314.35	1625329.99	PI
553	1710330.58	1625310.28	PI
555	1710248.81	1625340.88	PI
556	1710747.72	1625011.78	PI
557	1710755.37	1625237.41	PI
572	1710341.80	1625208.98	PI
588	1710311.38	1625218.90	PI
604	1709986.55	1625379.64	PI
608	1710124.38	1625403.70	PI
610	1709965.02	1625380.96	PI
616	1709766.23	1625422.35	PI
620	1709861.20	1625420.32	PI
649	1709937.33	1625145.08	PI
650	1709939.27	1625235.67	PI
651	1709948.51	1624984.70	PI
657	1709765.54	1625390.36	PI
658	1710116.90	1625372.59	PI
674	1710717.33	1624704.08	PI
676	1710676.64	1624643.40	PI
677	1710756.17	1624666.69	PI
702	1710340.34	1624944.70	PI
703	1710360.40	1624770.79	PI
707	1710359.85	1624763.38	PI
708	1710376.47	1624744.09	PI
718	1710372.77	1624694.23	PI
733	1710328.49	1624773.16	PI
735	1710309.80	1624935.13	PI
737	1710457.10	1624609.91	PI
738	1710334.47	1624525.32	PI
750	1709678.19	1624658.41	PI
784	1709680.97	1624788.38	PI
785	1709969.07	1624857.85	PI
786	1709933.43	1624683.98	PI

PLAT POINTS			
Point #	Northing	Easting	Desc.
788	1709913.18	1624652.04	PI
789	1709934.41	1624635.14	PI
801	1709952.22	1624533.91	PI
804	1710008.43	1624567.24	PI
809	1710322.77	1624691.94	PI
845	1709708.28	1624787.80	PI
846	1709866.85	1624703.94	PI
847	1709885.68	1624719.95	PI
849	1709936.60	1624858.24	PI
850	1709916.93	1624979.58	PI
851	1709905.33	1625145.77	PI
852	1709907.28	1625236.35	PI
853	1709941.39	1625336.77	PI
855	1709937.62	1625361.87	PI
856	1709860.52	1625388.32	PI
857	1710240.86	1625375.70	PI
859	1710449.83	1625375.81	PI
861	1710464.03	1625372.88	PI
862	1710613.54	1625404.85	PI
863	1710737.02	1625374.67	PI
865	1710758.60	1625373.66	PI
867	1710855.80	1625402.32	PI
882	1710994.65	1624116.17	PI
892	1710995.90	1624174.36	PI
979	1710355.28	1623524.41	PI
984	1710704.11	1623496.20	PI
985	1710735.56	1623535.06	PI
986	1710677.67	1623538.63	PI
1004	1709915.15	1623519.64	PI
1043	1710835.86	1624214.74	PI
1044	1710827.62	1624207.43	PI
1046	1710739.52	1623964.85	PI
1048	1710748.80	1623749.94	PI
1049	1710690.91	1623753.51	PI
1050	1710682.15	1623956.31	PI
1051	1710789.12	1624250.80	PI
1052	1710811.78	1624270.92	PI
1053	1710805.53	1624307.41	PI
1054	1710796.68	1624416.66	PI
1055	1710490.03	1624562.17	PI

PLAT POINTS			
Point #	Northing	Easting	Desc.
1056	1710367.41	1624477.58	PI
1057	1710356.01	1624470.09	PI
1059	1710373.71	1624333.99	PI
1061	1710380.15	1624103.80	PI
1063	1710388.40	1623717.11	PI
1065	1710379.86	1623567.95	PI
1066	1710322.16	1623561.86	PI
1067	1710331.43	1623727.97	PI
1068	1710323.69	1624090.52	PI
1069	1710316.59	1624344.09	PI
1070	1710304.09	1624444.15	PI
1071	1709997.25	1624496.76	PI
1072	1709993.08	1624492.73	PI
1074	1709945.59	1624353.19	PI
1076	1709940.41	1624073.92	PI
1078	1709939.28	1623782.13	PI
1080	1709947.72	1623557.59	PI
1081	1709889.94	1623562.82	PI
1082	1709881.91	1623773.64	PI
1083	1709883.10	1624082.85	PI
1084	1709887.99	1624346.38	PI
1085	1709956.66	1624538.19	PI
1086	1709691.38	1624658.13	PI
1087	1710863.34	1624312.09	PI
1088	1710854.49	1624421.34	PI
1089	1710740.32	1624613.42	PI
1090	1710754.61	1624661.38	PI
1091	1710779.36	1625016.58	PI
1092	1710786.61	1625230.48	PI
1093	1710774.82	1625327.05	PI
1095	1710781.48	1625350.37	PI
1096	1710855.05	1625370.33	PI

SANITARY POINTS			
Point #	Northing	Easting	Desc.
2000	1710619.69	1625527.90	TIE-IN
2001	1710987.49	1625519.27	MH
2002	1710924.04	1625358.68	MH
2003	1710919.27	1625136.31	MH
2004	1710913.59	1624871.59	MH
2005	1710910.27	1624716.40	MH
2006	1710999.70	1624575.48	MH
2007	1710991.05	1624181.84	MH
2008	1710986.89	1623987.66	MH
2009	1710886.93	1623989.80	MH
2010	1710888.46	1624061.18	MH
2011	1710879.36	1623636.76	MH
2012	1710874.11	1623391.80	MH
2013	1710598.77	1625120.92	MH
2014	1710626.91	1624873.34	MH
2015	1710598.97	1624711.90	MH
2016	1710984.02	1625357.33	MH

CONTROL POINTS			
Point #	Northing	Easting	Desc.
100	1709596.07	1624178.12	CP
101	1709656.12	1625269.09	CP
102	1710347.41	1622982.67	CP

SANITARY SEWER PLANS FOR
ESTANCIA ADDITION
 PHASE 3A

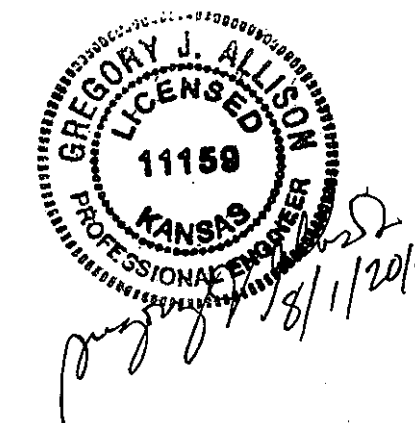
©2018
MKEC Engineering
All Rights Reserved
www.mkec.com
These drawings and their contents, including, but not limited to, all concepts, designs, & ideas are the exclusive property of MKEC Engineering (MKEC), and may not be used or reproduced in any way without the express consent of MKEC.

BUBBLE TABLES

PROJECT NO.	468-85077	
DATE	JUNE 2018	
SCALE	N/A	
DESIGNED	DRAWN	CHECKED
JWC	JWC	DFL

NO.	REVISION	DATE

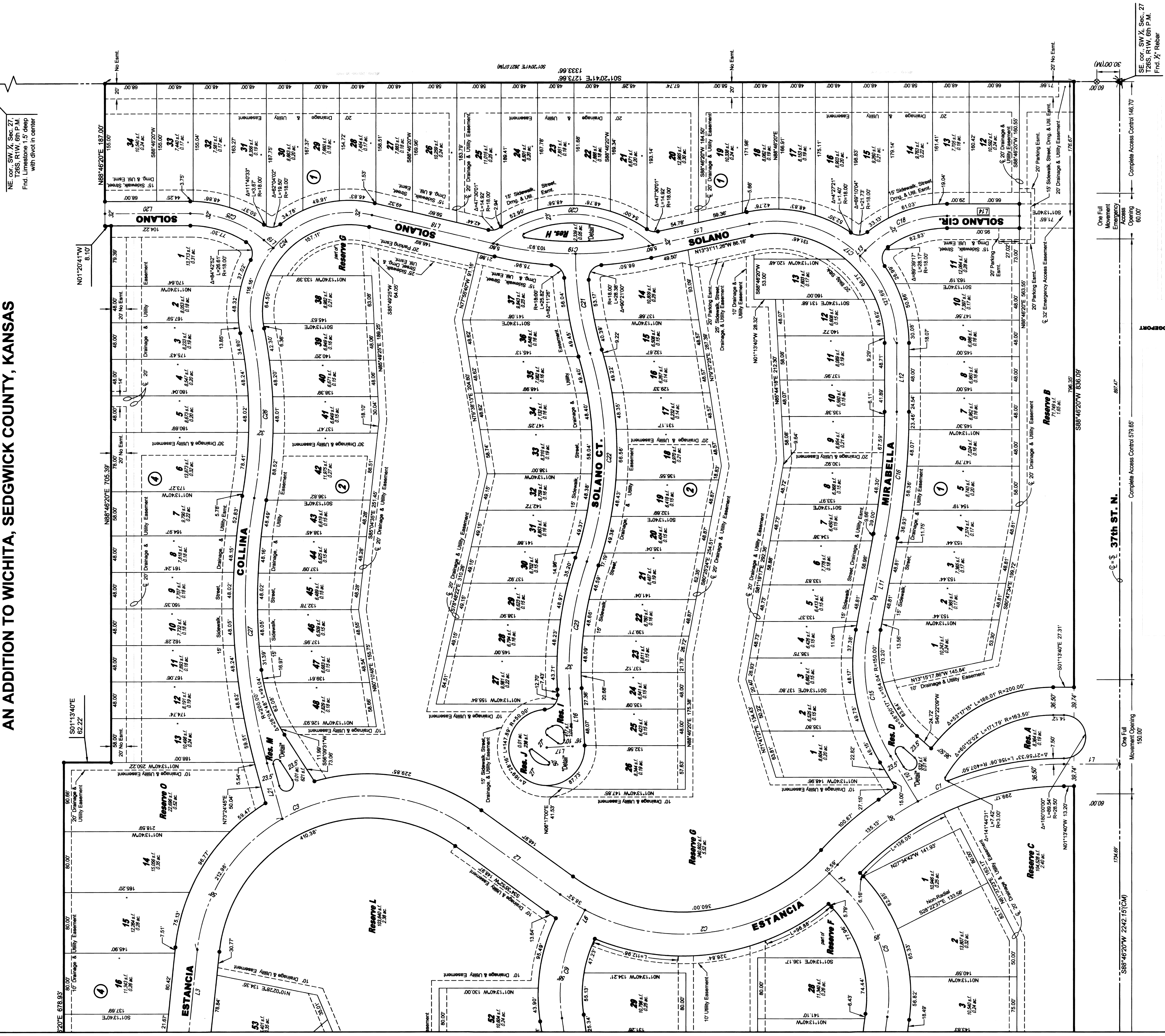
SHEET NO.



FINAL PLAT

ESTANCIA ADDITION

AN ADDITION TO WICHITA, SEDGWICK COUNTY, KANSAS

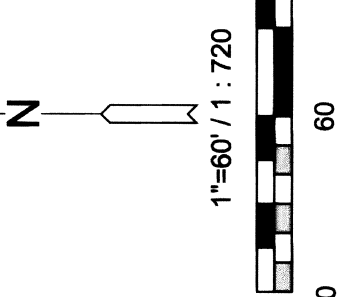
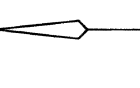


NE 1/4 SW 1/4 Sec. 27, T26S R1W, 6th P.M., Find Limestone 1.5' deep with diavel in center

SE cor., SW 1/4, Sec. 27, T26S, R1W, 6th P.M., Frd. 1/2 Rebar

LEGEND
Date of Survey: April 23, 2015

- △ = Section corner monument found
- ⊙ = Found 3/4 rebar w/ MKEC CLS 39 ft. cap
- ⊙ = Set 3/4 rebar w/ MKEC CLS 39 ft. cap
- (M) = Measured
- (CM) = Calculated from measured
- (D) = Described
- ⊕ = Benchmark
- U.E. = Utility Easement
- D.E. = Drainage Easement



Basis of Bearing: Kansas coordinate system of 1983 south zone grid bearing of N88°46'20"E on the south of the SW 1/4, Sec. 27, T26S, R1W, 6th P.M.
This plat is surveyed and platted on NAD83 using Kansas state plane south zone coordinates, modified to the surface, having a combined adjustment scale factor of 1.00020014401728

MINIMUM PAD ELEVATIONS (LOWEST AREAS)	LOTS	BLOCK ELEVATION	MIN. PAD
	1-48	2	1334.1
	5, 6, 13, 14	4	1334.1

BENCHMARK
Square cut top of curb on west side of median island and 10 feet north of the south end of said median lying south of K-96 and Ridge Rd. (being 338 feet S. of the NW corner SW 1/4, Sec. 27, T26S, R1W, 6th P.M.) Elev. = 1335.00 NAVD83

