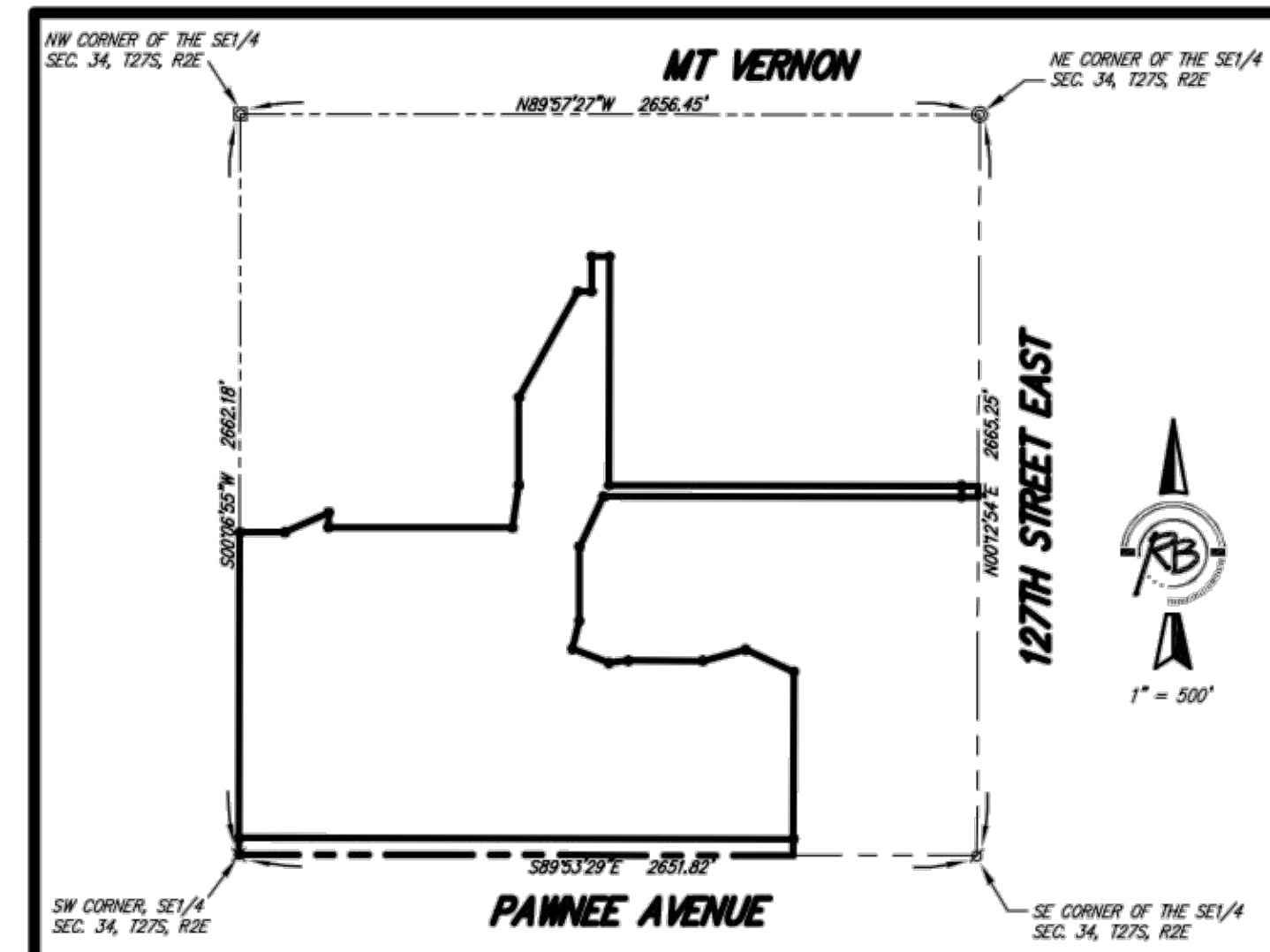
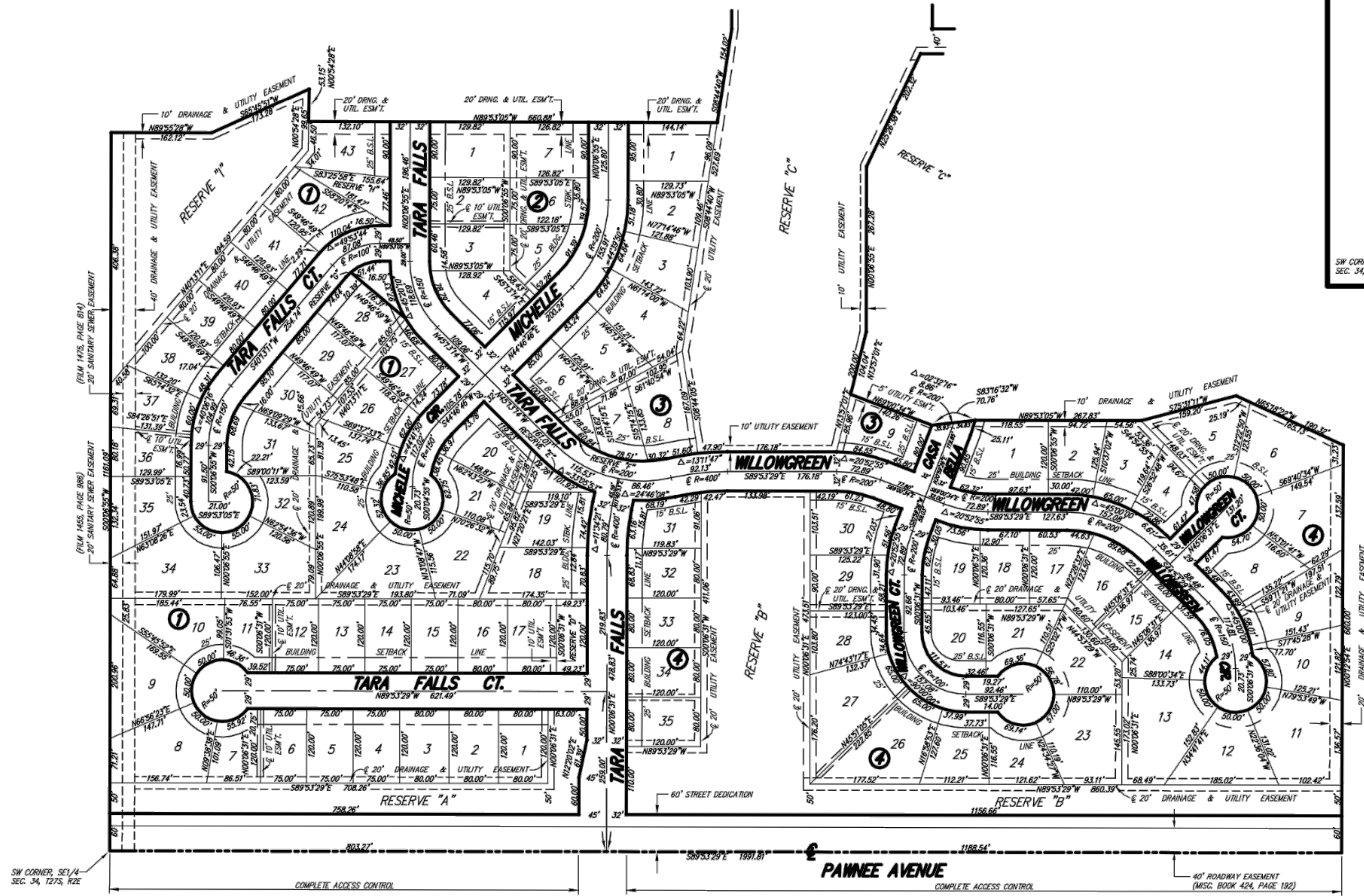


# CASA BELLA

Wichita, Sedgwick County, Kansas



1" = 100'  
 BENCH MARK: SRB BRASS DISC 55.45' E.  
 & 5.13' S. OF THE N.W. COR., SW 1/4, SEC. 35,  
 T27S, R2E  
 ELEV.=1348.35 (NGVD) = 160.95 (CITY DATUM)

- SURVEY MARKER LEGEND**
- = PK NAIL IN CONCRETE
  - = 1/2" IRON PIPE
  - = 3/4" IRON PIPE
  - ⊗ = 5/8" REBAR W/GARBER CAP (FOUND)
  - ⊗ = 1" BAR (FOUND)
  - = 5/8" REBAR W/R&B CAP (SET)

BLOCK	LOT NO.	ELEVATION (N.G. VD.)
1	37, 38, 39, 40, 41, 42, 43	1350.50
3	1, 2, 3, 4, 8, 9	1344.50
4	26, 27, 28, 29, 30, 31, 32, 33, 34, 35	1348.50

SHEET 2 OF 2



**Ruggles & Bohm, P.A.**  
 Engineering, Surveying, Land Planning  
 924 North Main (316) 264-8008  
 Wichita, Kansas 67203 (316) 264-4621 fax  
 www.rbkansas.com E-mail: info@rbkansas.com

DWG FILE: SURVEY BASE  
 PROJECT NO. 2521P  
 SEPTEMBER 26, 2005



© 2019 GARVER, LLC  
 THIS DOCUMENT, ALONG WITH THE  
 IDEAS AND DESIGNS CONVEYED  
 HEREIN, SHALL BE CONSIDERED  
 INSTRUMENTS OF PROFESSIONAL  
 SERVICE AND ARE PROPERTY OF  
 GARVER, LLC. ANY USE,  
 REPRODUCTION OR DISTRIBUTION  
 OF THIS DOCUMENT, ALONG WITH  
 THE IDEAS AND DESIGN CONTAINED  
 HEREIN, IS PROHIBITED UNLESS  
 AUTHORIZED IN WRITING BY  
 GARVER, LLC OR EXPLICITLY  
 ALLOWED IN THE GOVERNING  
 PROFESSIONAL SERVICES  
 AGREEMENT FOR THIS WORK.

FOR INFORMATION ONLY

REV.	DATE	DESCRIPTION	BY

CITY OF WICHITA  
 WICHITA, KANSAS  
 CASA BELLA, PHASE 6  
 PAVING

Paving Plat

JOB NO.: 18267018  
 DATE: APRIL 2019  
 DESIGNED BY: MTD  
 DRAWN BY: MTD

BAR IS ONE INCH ON  
 ORIGINAL DRAWING  
 IF NOT ONE INCH ON THIS SHEET,  
 ADJUST SCALES ACCORDINGLY.

DRAWING NUMBER

SHEET NUMBER **19** OF **19**

File: L:\2018\18267018 - Casa Bella Phase 6\Drawings\C3018267018 Plat Maps.dwg Last Save: 2/19/2019 5:43 PM Last saved by: MTDolechek  
 Last plotted by: Dolechek, Mark T. Plot Date: 4/15/2019 11:31 AM Plotter used: None Plot Scale: Plot Scale: --- Plot Style: ---