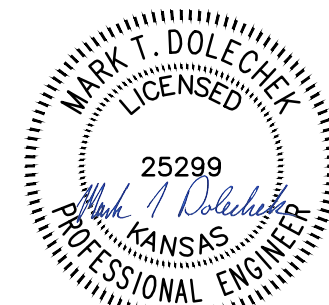




© 2019 GARVER, LLC  
 THIS DOCUMENT, ALONG WITH THE IDEAS AND DESIGNS CONVEYED HEREIN, SHALL BE CONSIDERED INSTRUMENTS OF PROFESSIONAL SERVICE AND ARE PROPERTY OF GARVER, LLC. ANY USE, REPRODUCTION, OR DISTRIBUTION OF THIS DOCUMENT, ALONG WITH THE IDEAS AND DESIGN CONTAINED HEREIN, IS PROHIBITED UNLESS AUTHORIZED IN WRITING BY GARVER, LLC OR EXPLICITLY ALLOWED IN THE GOVERNING PROFESSIONAL SERVICES AGREEMENT FOR THIS WORK.



Digitally Signed 04/15/2019

REV.	DATE	DESCRIPTION	BY

CITY OF WICHITA  
 WICHITA, KANSAS  
 CASA BELLA, PHASE 6  
 PAVING

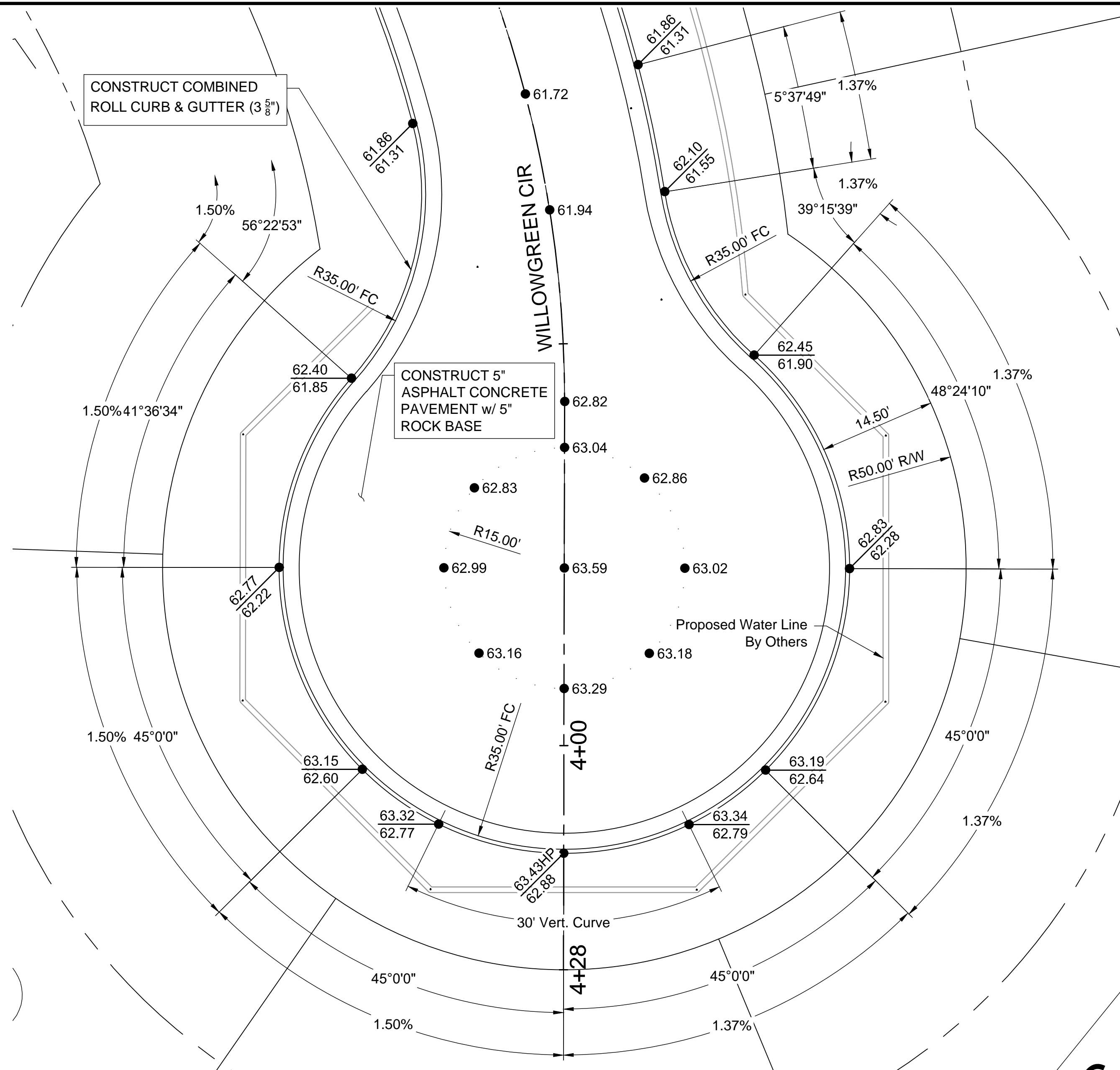
Cul-de-sac &  
 VG Detail

JOB NO.: 18267018  
 DATE: APRIL 2019  
 DESIGNED BY: MTD  
 DRAWN BY: MTD

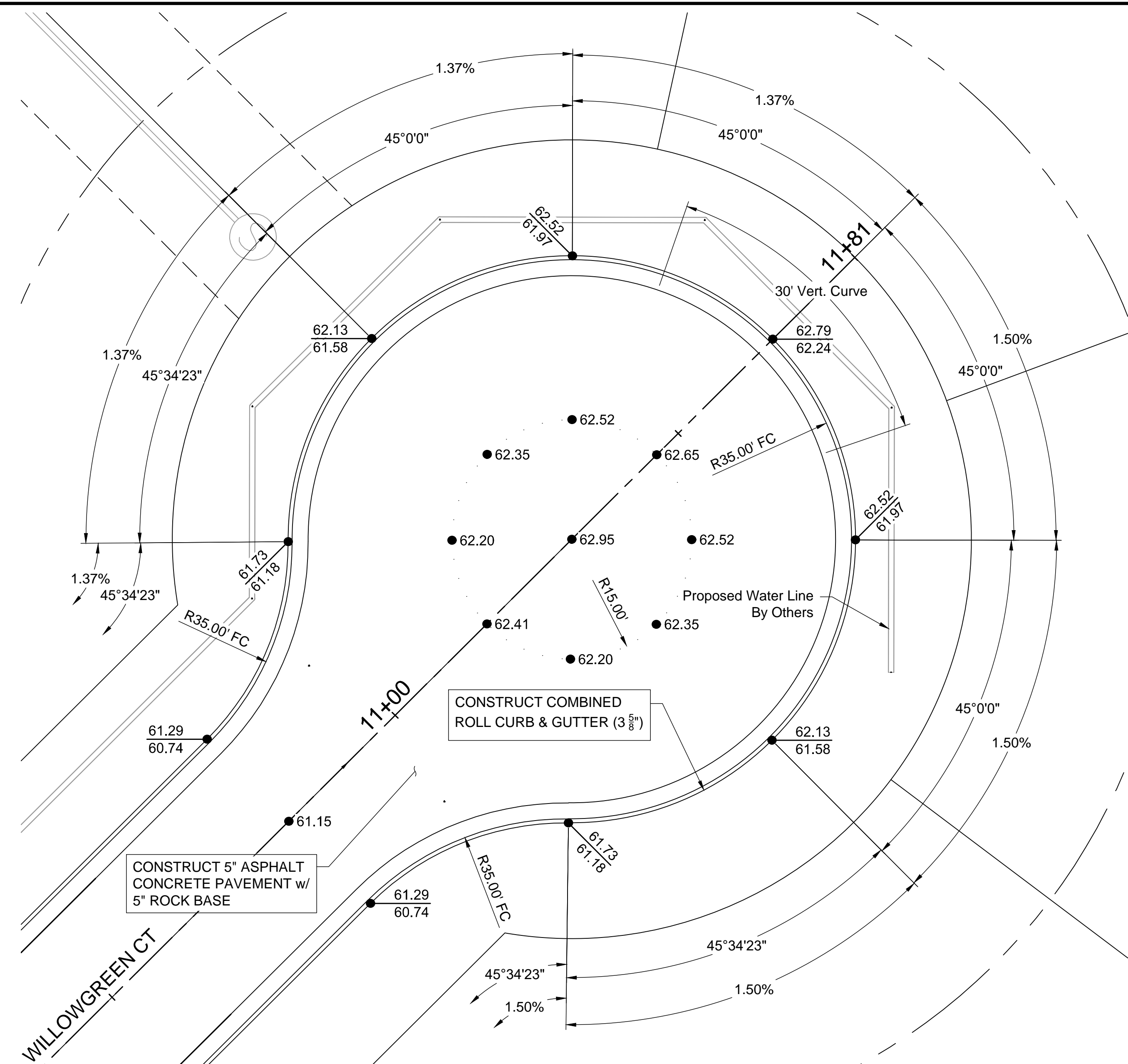
BAR IS ONE INCH ON ORIGINAL DRAWING  
 0 5' 10' 20' 30'  
 IF NOT ONE INCH ON THIS SHEET, ADJUST SCALES ACCORDINGLY.

DRAWING NUMBER

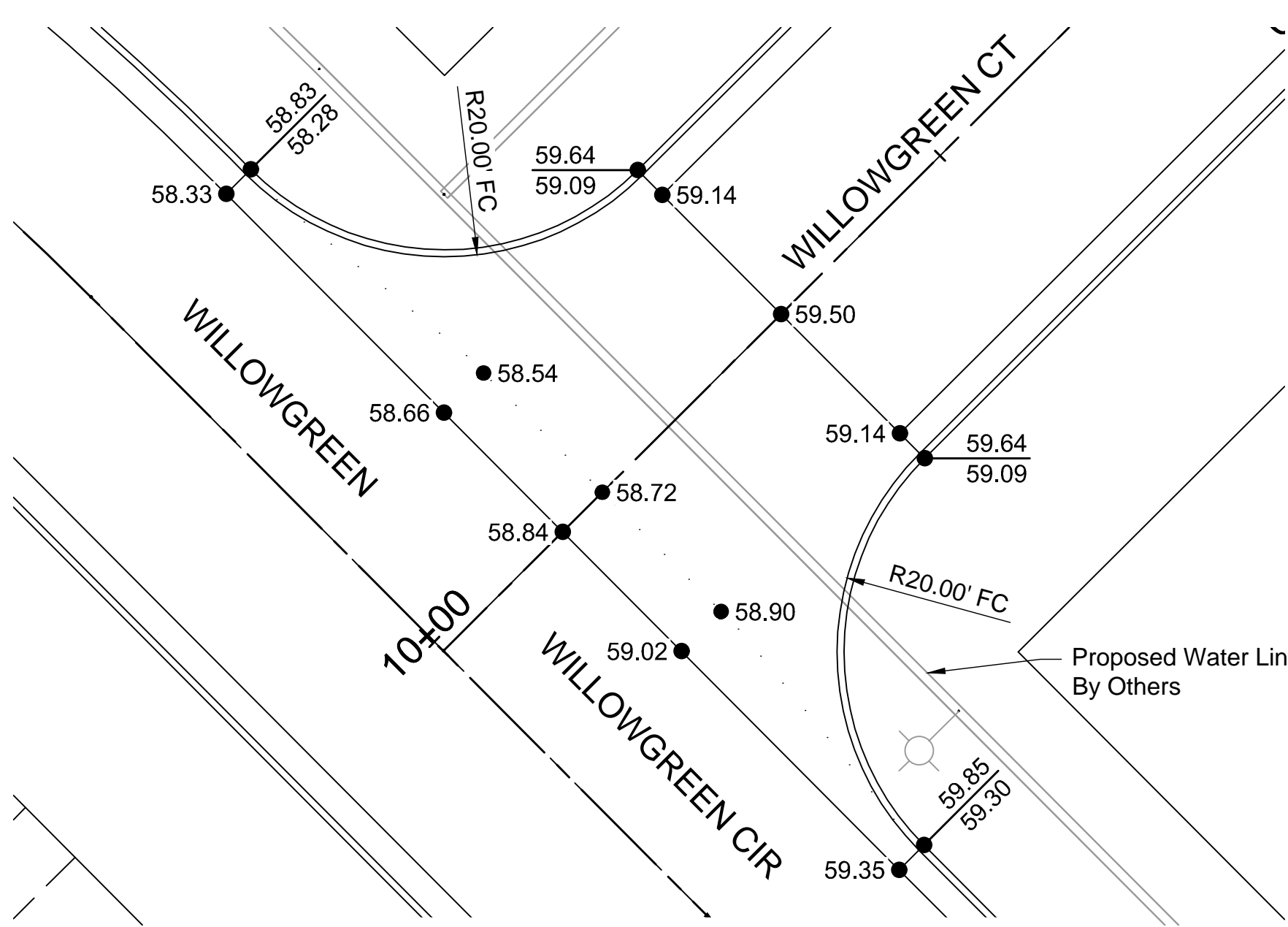
SHEET NUMBER **9** OF **19**



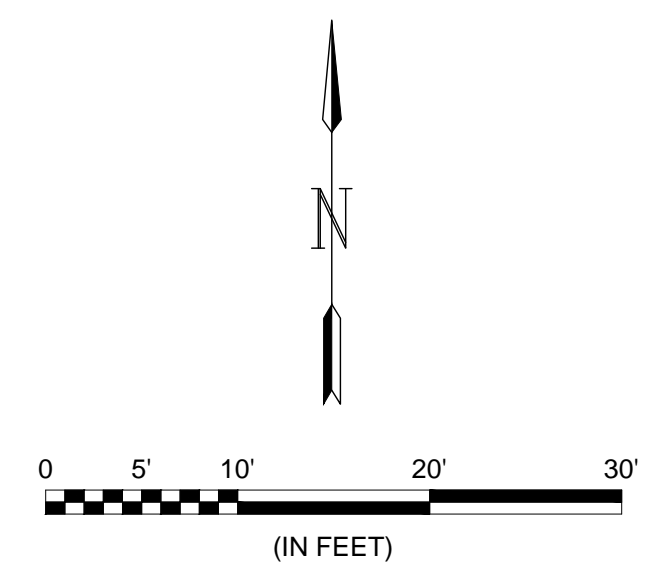
WILLOWGREEN CIR. DETAIL



WILLOWGREEN CT. DETAIL



VALLEY GUTTER DETAIL



- NOTES:
- Elevations shown are abbreviated. Add 1300 to the displayed elevation to obtain the true elevation.
  - The displayed top of curb elevation is the top of full curb (6 3/8"). Roll curb (3 3/8") shall be constructed except for Valley Gutters.

File: L:\2018\18267018 - Casa Bella Phase 6\Drawings\C3D\Paving\Cul-de-sac & VG Details.dwg Last Save: 2/21/2019 10:24 AM Last saved by: MTDolchech  
 Last plotted by: Dolchech, Mark T. Plot Date: 4/15/2019 11:29 AM Plotter used: None  
 Plot Scale: 1:2500