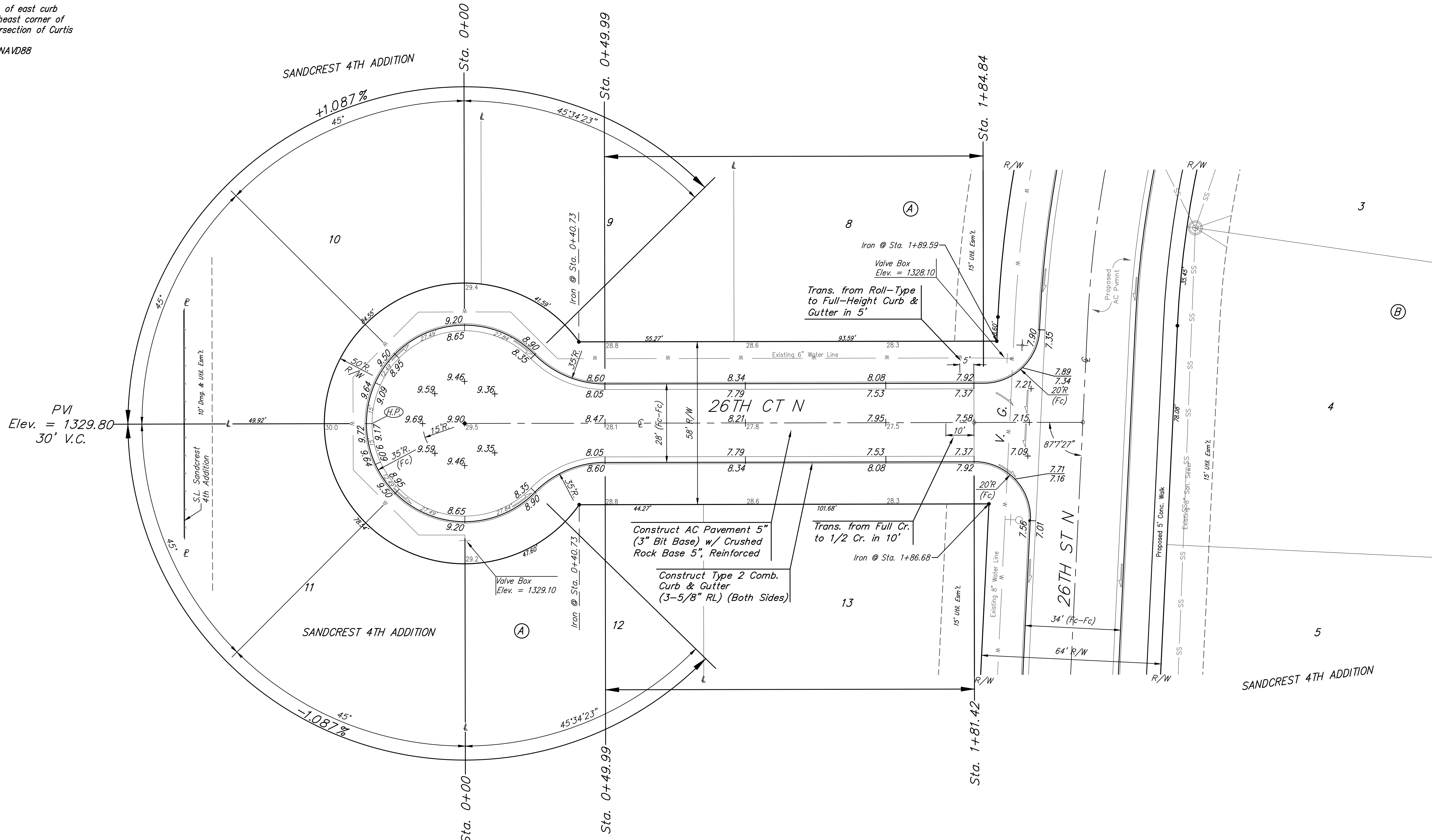
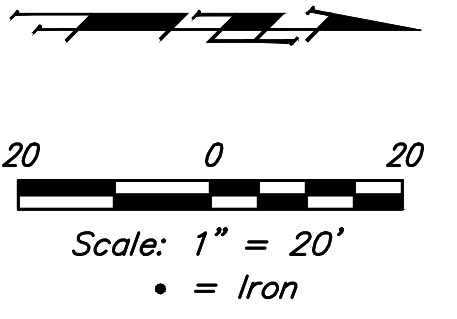


BENCHMARKS:
 City of Wichita Benchmark Disk
 34.9' S. & 31.2' W. of the SW Cor.,
 NW1/4, Sec. 2, Twp. 27-S, R-1-W.
 Elev. = 1327.57 NAVD88

"□" cut in top of curb 1.5'
 north of the northeast corner of
 Lot 20, Block B, Sandcrest Adh.
 Elev. = 1327.21 NAVD88

"□" cut in top of east curb
 inlet at the southeast corner of
 the southern intersection of Curtis
 & Sandcrest.
 Elev. = 1322.05 NAVD88



Subdivision Benchmarks

Street & Station	Location Description	Elevation
26th St N 11+71.60, 16.79' Rt.	Adjacent to Fire Hydrant at North End of the East Return 26th St N & 26th Ct N, NW Cor., Lot 7, Blk A	
26th St N 15+05.38, 17.25' Rt.	Adjacent to Fire Hydrant at North End of the East Return 26th St N & 26th Ct N, NW Cor., Lot 13, Blk A	

Valve Location Table

Valve Number	Baseline Station	Offset Distance	Offset Direction
1	11+59.06	27.11'	Rt.
2	14+48.01	28'	Rt.
3	16+41.43	26'	Rt.

Roll type curb & gutter to be constructed on the pavement on this sheet.
 Top of curb elevation are given for full height curb.

Baughman		Sandcrest 4th Addition - Phase I 26TH CT N Lots 8 through 13, Block A	
Baughman Company, P.A. 315 Ellis St. Wichita, KS 67211 P 316-262-7271 F 316-262-0149 ENGINEERING SURVEYING PLANNING LANDSCAPE ARCHITECTURE			
PROJECT NUMBER 472-85456	DESIGN AEG	DRAWN JAK	
REVISIONS:	APPROVED	DATE 4/15/19	
	SCALE Noted	SHEET	9 OF 21