

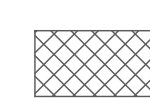


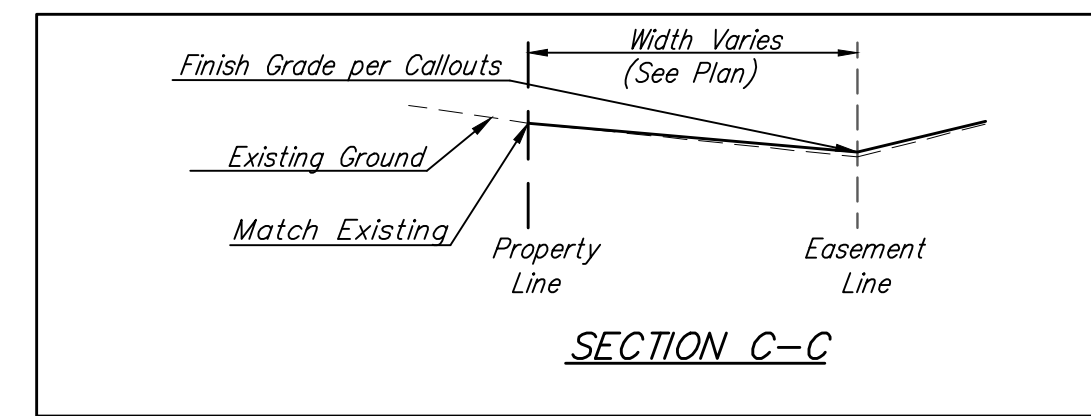
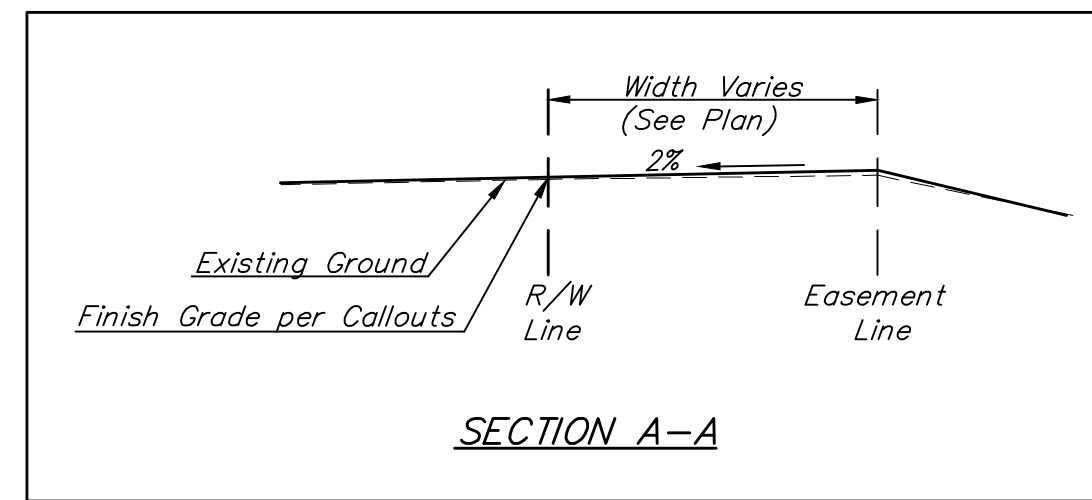
**BENCHMARKS:**  
 City of Wichita Benchmark Disk  
 34.9' S. & 31.2' W. of the SW Cor.,  
 NW1/4, Sec. 2, Twp. 27-S, R-1-W.  
 Elev. = 1327.57 NAVD88

"□" cut in top of curb 1.5'  
 north of the northeast corner of  
 Lot 20, Block B, Sandcrest Addn.  
 Elev. = 1327.21 NAVD88

"□" cut in top of east curb  
 inlet at the southeast corner of  
 the southern intersection of Curtis  
 & Sandcrest.  
 Elev. = 1322.05 NAVD88

**EROSION CONTROL PLAN  
 LEGEND**

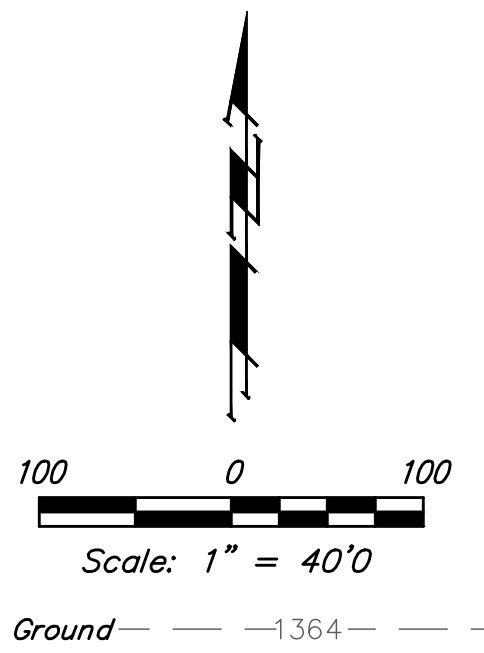
-  - DROP INLET PROTECTION
-  - CURB INLET PROTECTION
-  - BACK OF CURB PROTECTION



 = Easements To Be Graded

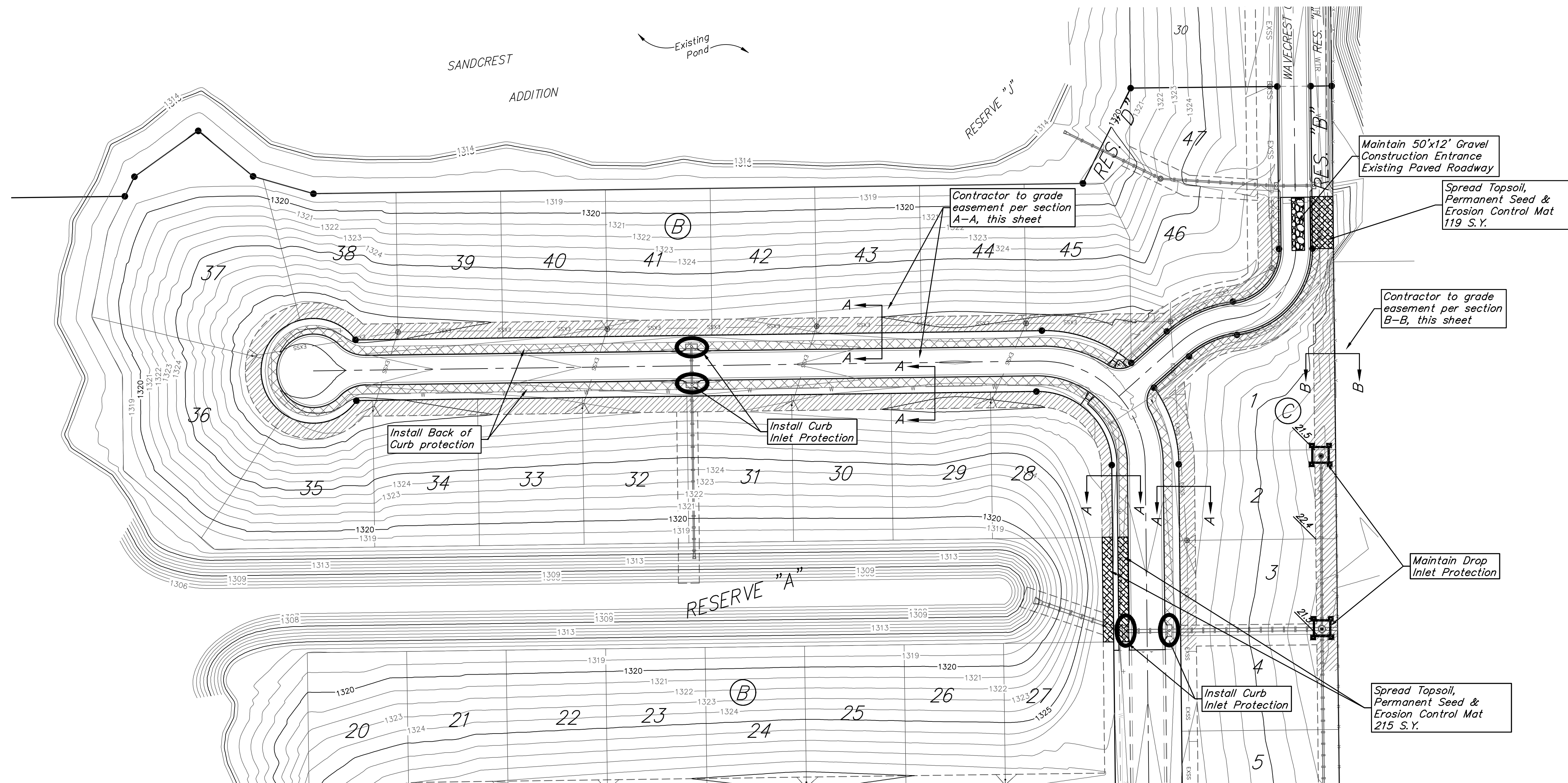
Easements have been previously graded to within ±0.3' with the Storm Water Drain Project. The Contractor of this project shall fine grade the easements as shown to the elevations given on the easement grading plan. All costs for grading shall be incidental to the Easement Grading Bid Item.

The Contractor shall 'straight' grade the easements between the elevations given. Where a callout designates 'Match', the Contractor will grade to the existing ground elevation.



EROSION CONTROL MEASURE	INSTALL	MAINTAIN
BACK OF CURB PROTECTION (LF)	2,670	0
CONSTRUCTION ENTRANCE (EA)	0	1
CURB INLET BARRIER (EA)	4	0
DROP INLET PROTECTION (EA)	0	2
MAINTAIN EROSION CONTROL BMP's (LS)	0	1


\* ALL EXISTING BMPs INCLUDING CONSTRUCTION ENTRANCE, SEDIMENT BARRIERS, SILT FENCE, CUT-OFF TRENCH, AND EROSION CONTROL MAT SHALL BE MAINTAINED AND REPAIRED IF NECESSARY.



**NOTES:**

1. Contractor shall make sure all erosion control is in place before project is accepted. This plan represents the minimum standard. Any additional erosion control measures shall be installed by the Contractor as needed.
2. Removal of Gravel Construction Entrance for pavement construction shall be included in bid item "Site Clearing"
3. This Plan is Not To Be Used As A Comprehensive Grading Plan. All Spot Elevations Are Proposed & Subject To Change.

All areas disturbed during construction shall be seeded, mulched, and fertilized as per Cover Sheet General Notes.

 <b>Baughman</b>	Sandcrest 4th Addition - Phase II	
	<b>EROSION CONTROL</b> Street Improvements	
Baughman Company, P.A. 315 Ellis St. Wichita, KS 67211 P 316-262-7271 F 316-262-0149 ENGINEERING   SURVEYING   PLANNING   LANDSCAPE ARCHITECTURE		
PROJECT NUMBER 472-85457	DESIGN AEG	DRAWN JAK
REVISIONS:	APPROVED	DATE 4/15/19
	SCALE Noted	SHEET <b>10 OF 21</b>