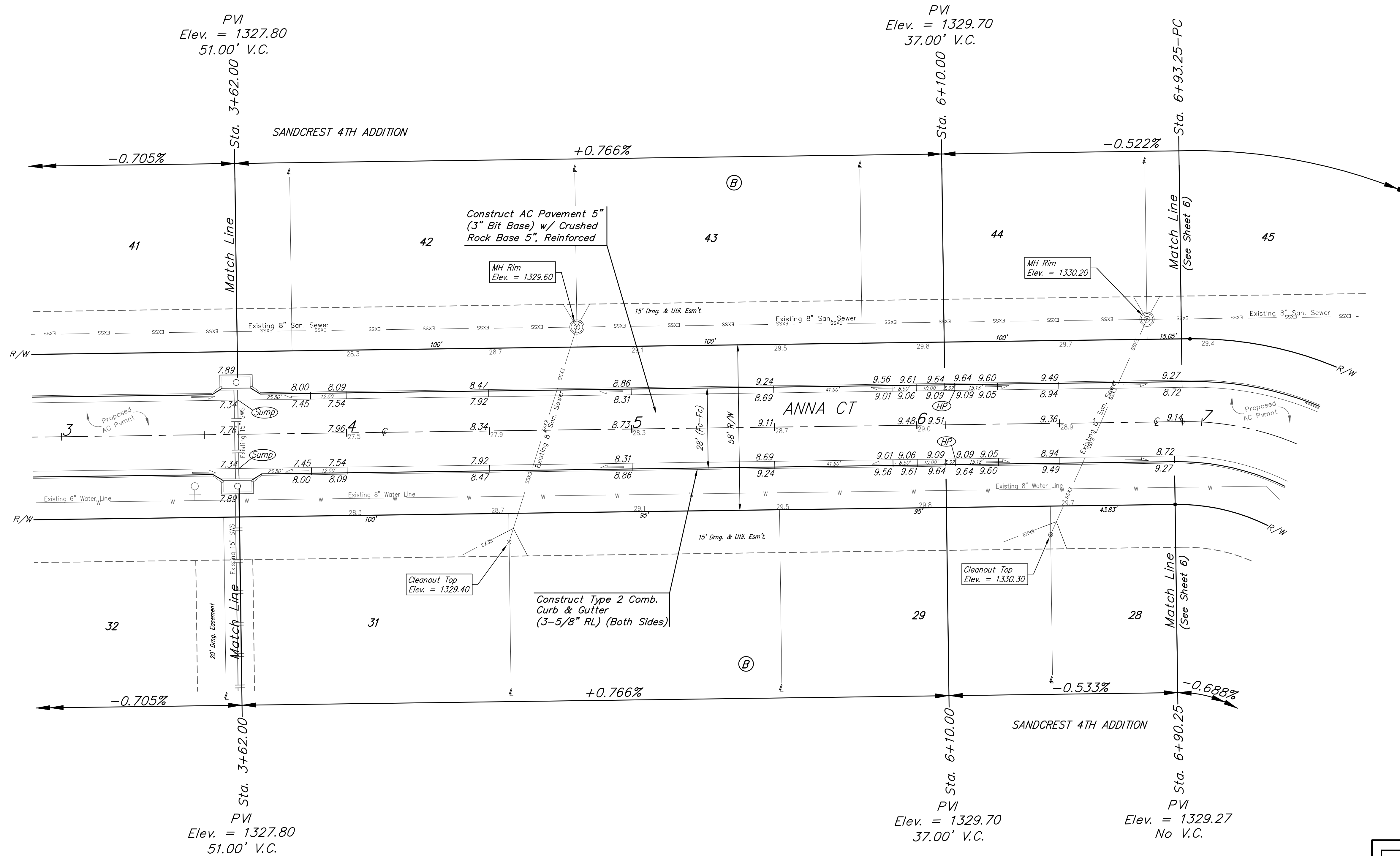
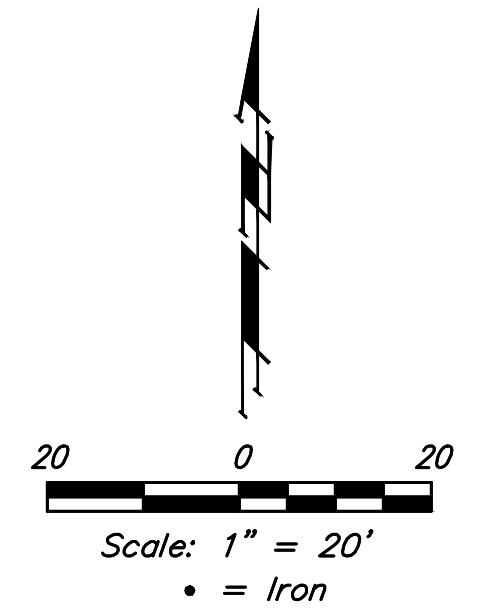


BENCHMARKS:
 City of Wichita Benchmark Disk
 34.9' S. & 31.2' W. of the SW Cor.,
 NW1/4, Sec. 2, Twp. 27-S, R-1-W.
 Elev. = 1327.57 NAVD88

"□" cut in top of curb 1.5'
 north of the northeast corner of
 Lot 20, Block B, Sandcrest Addn.
 Elev. = 1327.21 NAVD88

"□" cut in top of east curb
 inlet at the southeast corner of
 the southern intersection of Curtis
 & Sandcrest.
 Elev. = 1322.05 NAVD88



Subdivision Benchmarks

Street & Station	Location Description	Elevation
Anna St 0+32.38, 14.25' Rt.	Adjacent to Fire Hydrant at East End of the South Return Anna St & Anna St, NW Cor., Lot 1, Blk C	
Anna Ct 3+46.42, 14.25' Rt.	Adjacent to Fire Hydrant North of the NE Cor., Lot 32, Blk B	

VALVE LOCATION TABLE

VALVE NUMBER	STREET	BASELINE STATION	OFFSET DISTANCE	OFFSET DIRECTION
1	Anna	1+60.45	26.4'	Lt.
2	Anna	3+90.89	20.5'	Lt.
3	Anna	2+23.04	23.9'	Rt.

Roll type curb & gutter to be constructed on the pavement on this sheet.
 Top of curb elevation are given for full height curb.

Baughman		Sandcrest 4th Addition - Phase II ANNA CT Sta. 3+62.00 to Sta. 6+90.25	
<small>Baughman Company, P.A. 315 Ellis St. Wichita, KS 67211 P 316-262-7271 F 316-262-0149 ENGINEERING SURVEYING PLANNING LANDSCAPE ARCHITECTURE</small>			
PROJECT NUMBER 472-85457	DESIGN AEG	DRAWN JAK	
REVISIONS:	APPROVED	DATE 4/15/19	
	SCALE Noted	SHEET	9 OF 21