

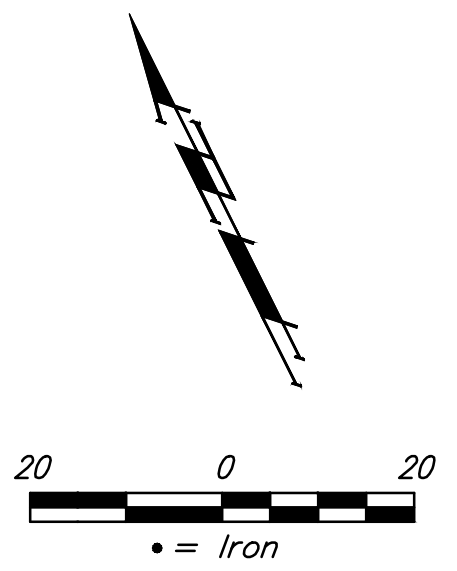
**BENCHMARKS:**  
 BM #1: "□" Cut in top of curb on north side of Athenian, near the SE corner of Lot 13, Block 1, Valencia Addition.  
 Elev. = 1332.11 NAVD88

BM #2: Cross cut in sidewalk on north side of Harborlight St., near Lot 23, Block 1, Harbor Isle 2nd Addition.  
 Elev. = 1330.40 NAVD88

**WATER VALVE LOCATION TABLE**

VALVE NUMBER	STREET	BASELINE STATION	OFFSET DISTANCE	OFFSET DIRECTION
V1	Athenian	0+85.00	23'	Lt.

Paving contractor will be responsible to operate all water valves on the project, in the presence of the inspector, to ensure accessibility to the valves, and that all valves (except blowoffs) are left in the "ON" position when the project is completed.



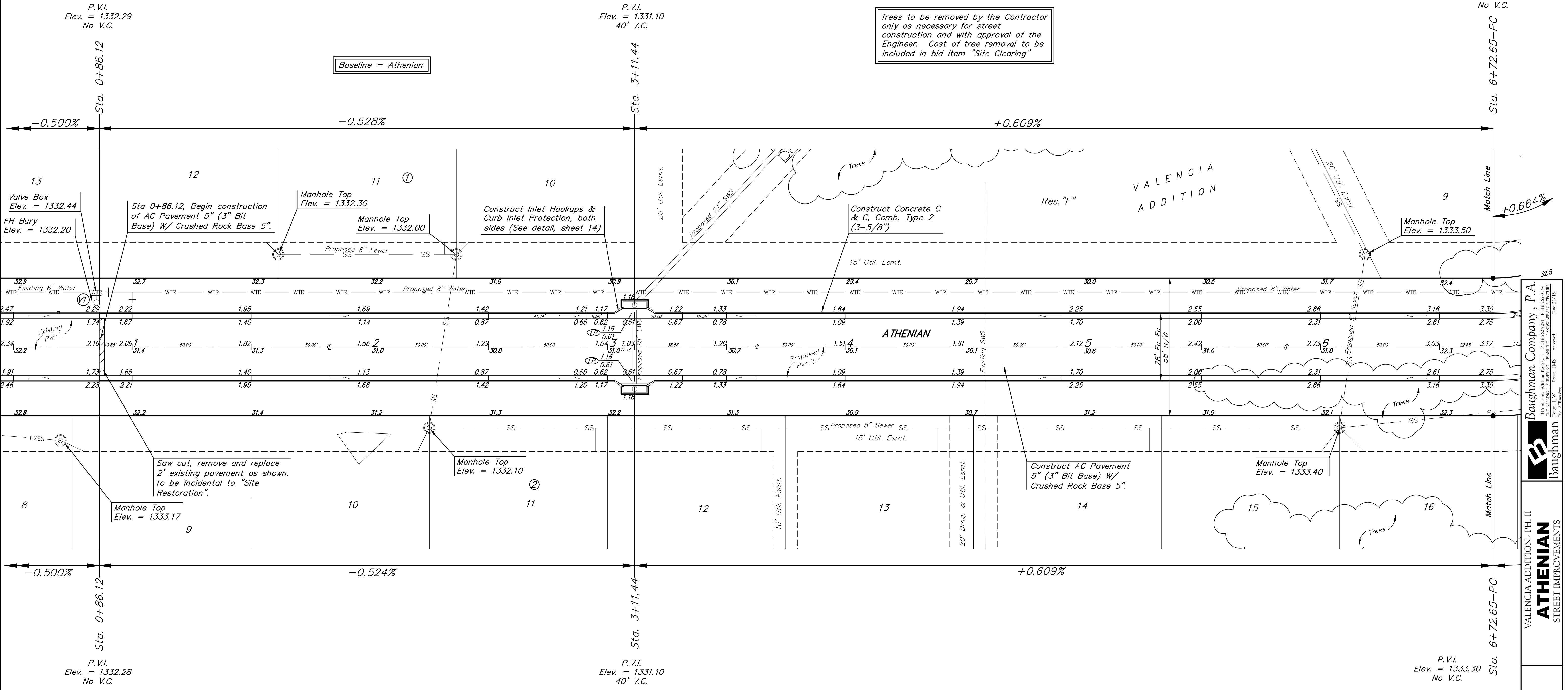
P.V.I.  
 Elev. = 1332.29  
 No V.C.

P.V.I.  
 Elev. = 1331.10  
 40' V.C.

P.V.I.  
 Elev. = 1333.30  
 No V.C.

Baseline = Athenian

Trees to be removed by the Contractor only as necessary for street construction and with approval of the Engineer. Cost of tree removal to be included in bid item "Site Clearing"



BAUGHMAN  
 ENGINEERING, PLANNING & ARCHITECTURE  
 1100 W. 10TH ST., SUITE 200  
 DENVER, CO 80202  
 TEL: 303.733.8800  
 FAX: 303.733.8801  
 www.baughman.com

VALENCIA ADDITION - PH. II  
**ATHENIAN**  
 STREET IMPROVEMENTS

SHEET  
**4**  
 OF  
**23**