

EROSION CONTROL MEASURE	INSTALL	MAINTAIN	REMOVE
BACK OF CURB PROTECTION (LF)	1,788	0	0
CONSTRUCTION ENTRANCE (EA)	0	1	0
CURB INLET BARRIER (EA)	2	0	0
DITCH CHECK (EA)	1	0	0
DROP INLET PROTECTION (EA)	2	0	0
EROSION CONTROL (LS)	0	0	0
EROSION CONTROL BERM (LF)	0	0	0
SILT FENCE (LF)	525	3,050	0
EROSION CONTROL MAT (SY)	0	0	0

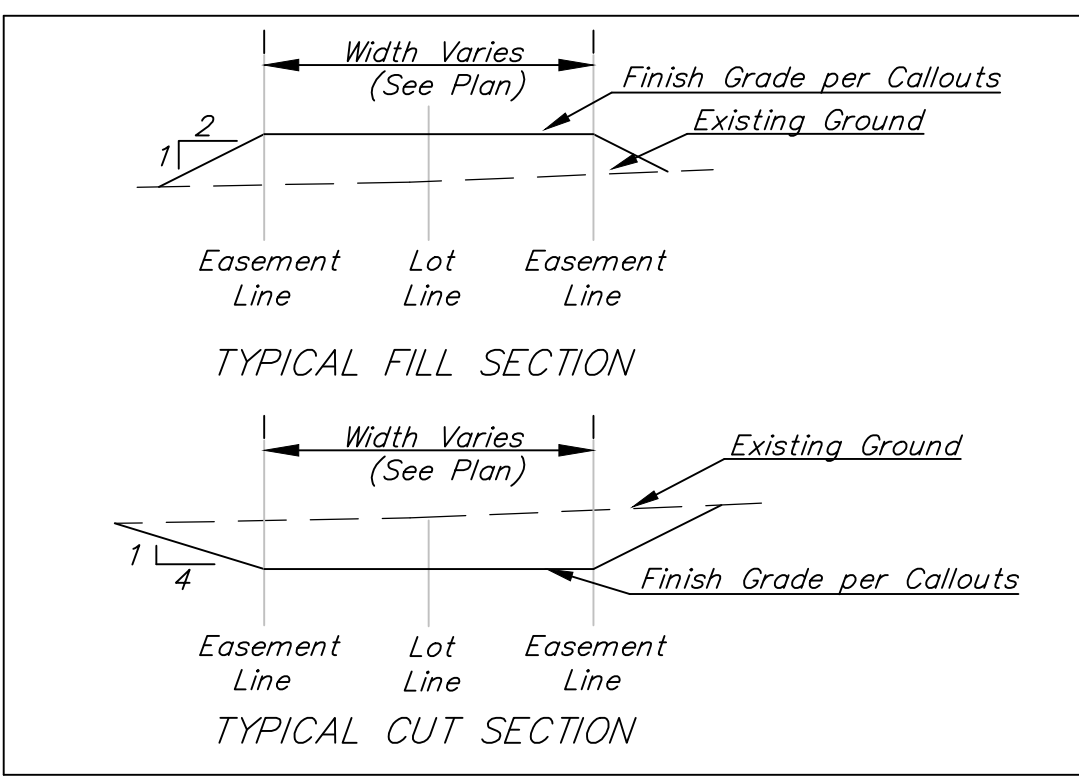
QUANTITIES ARE FOR INFORMATION ONLY! CONTRACTOR SHALL VERIFY QUANTITIES PER FINAL BID QUANTITY SHEET.

* ALL EXISTING BMPs INCLUDING CONSTRUCTION ENTRANCE, SEDIMENT BARRIERS, SILT FENCE, EROSION CONTROL BERM, AND EROSION CONTROL MAT SHALL BE MAINTAINED AND REPAIRED IF NECESSARY. REPLACEMENT OR REMOVAL OF EROSION CONTROL MEASURES TO BE PAID FOR BY L.S. BID ITEM "MAINTAIN EXISTING EROSION CONTROL BMPs"

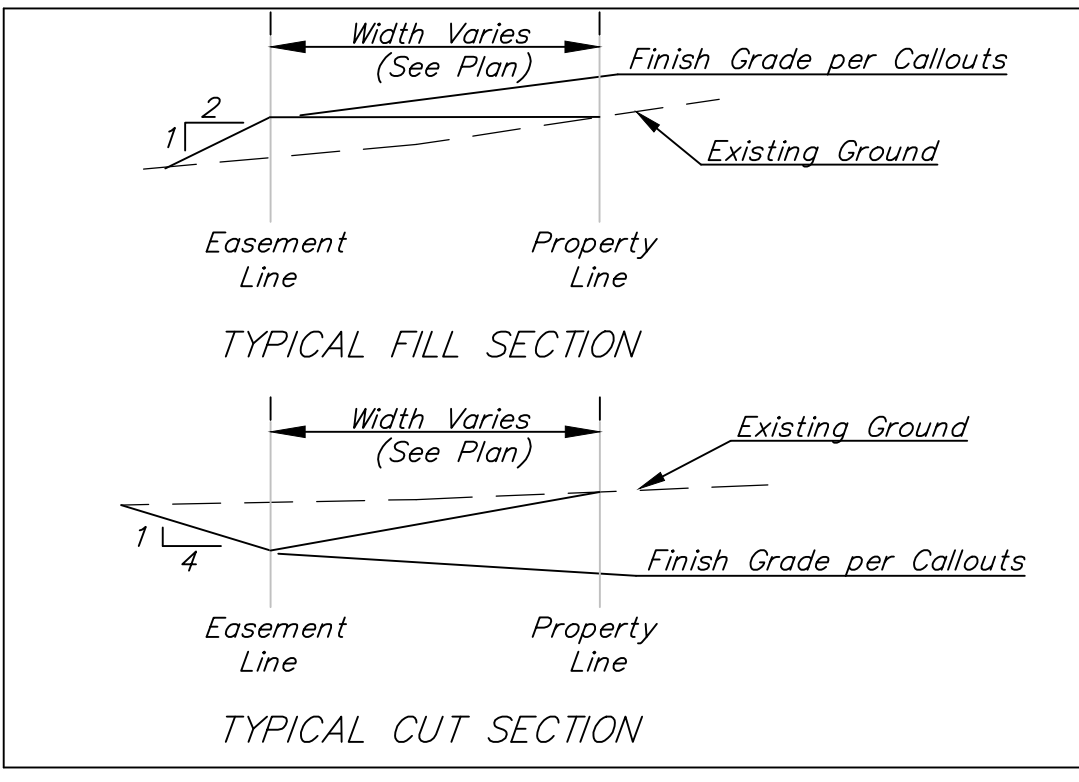


Approximate Easement Grading Quantities:
(For Information Only)
Excavation: 90 C.Y.
Fill: 630 C.Y.

The contractor shall fill and grade the easements as shown to the elevations given on the easement grading plan. All costs for grading shall be incidental to the Easement Grading Bid Item. The contractor shall 'straight' grade the easements between the elevations given. Where a callout designates 'Match', the contractor will grade to the existing ground elevation. The existing ditch cross sections are shown below.



SECTION A-A

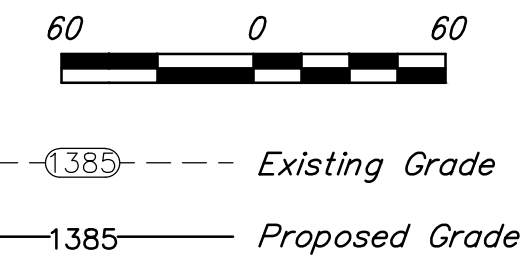
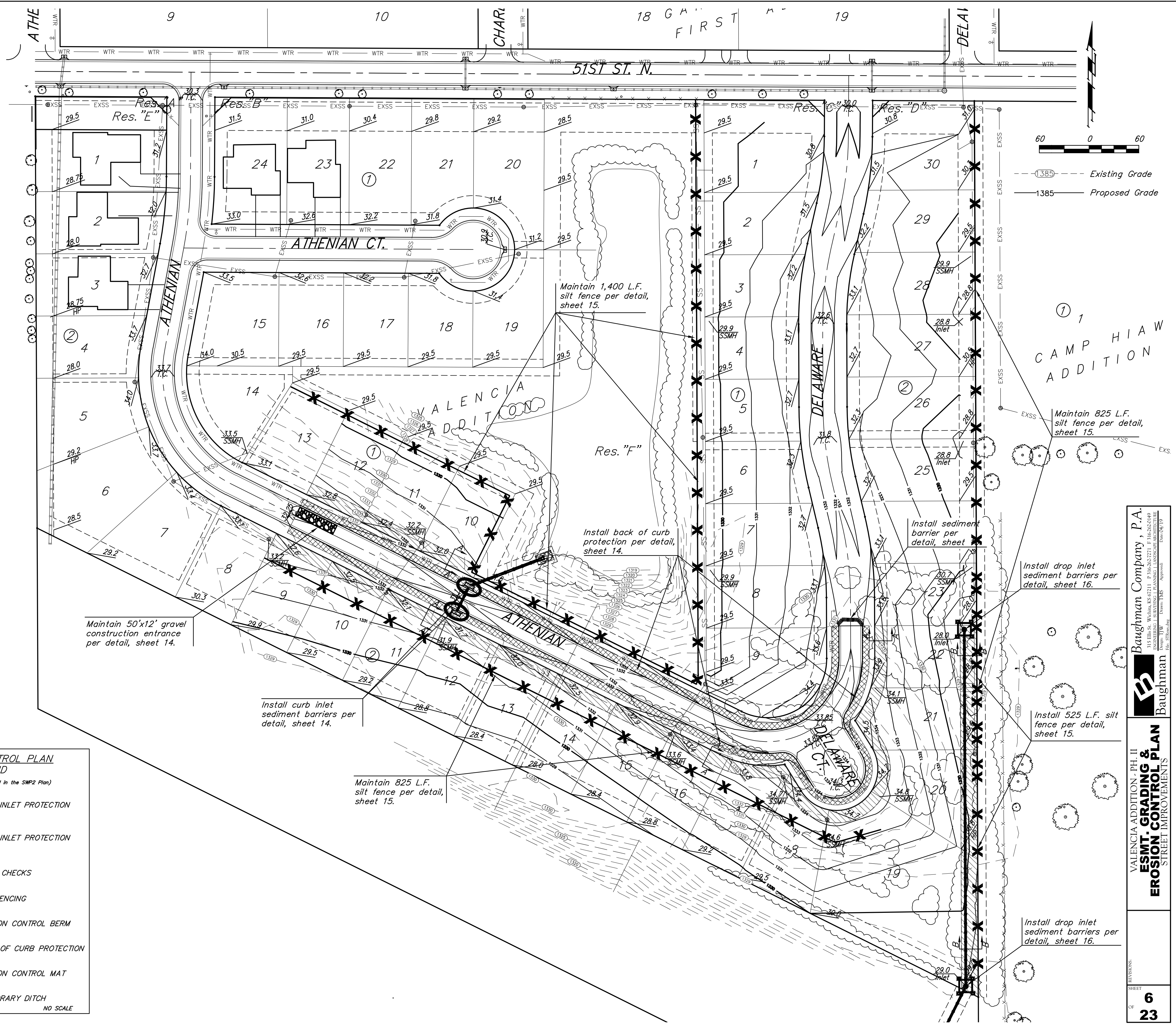


SECTION B-B

EROSION CONTROL PLAN LEGEND
(Installation Details Found in the SWP2 Plan)

	- DROP INLET PROTECTION
	- CURB INLET PROTECTION
	- DITCH CHECKS
	- SILT FENCING
	- EROSION CONTROL BERM
	- BACK OF CURB PROTECTION
	- EROSION CONTROL MAT
	- TEMPORARY DITCH

NO SCALE



Baughman Company, P.A.
145 E. WALTON ST. SUITE 200
ANN ARBOR, MI 48106
ESMT.GRADING & EROSION CONTROL PLAN
STREET IMPROVEMENTS

VALENCIA ADDITION - PH. II
ESMT.GRADING & EROSION CONTROL PLAN
STREET IMPROVEMENTS