

### EROSION CONTROL/SEEDING NOTES

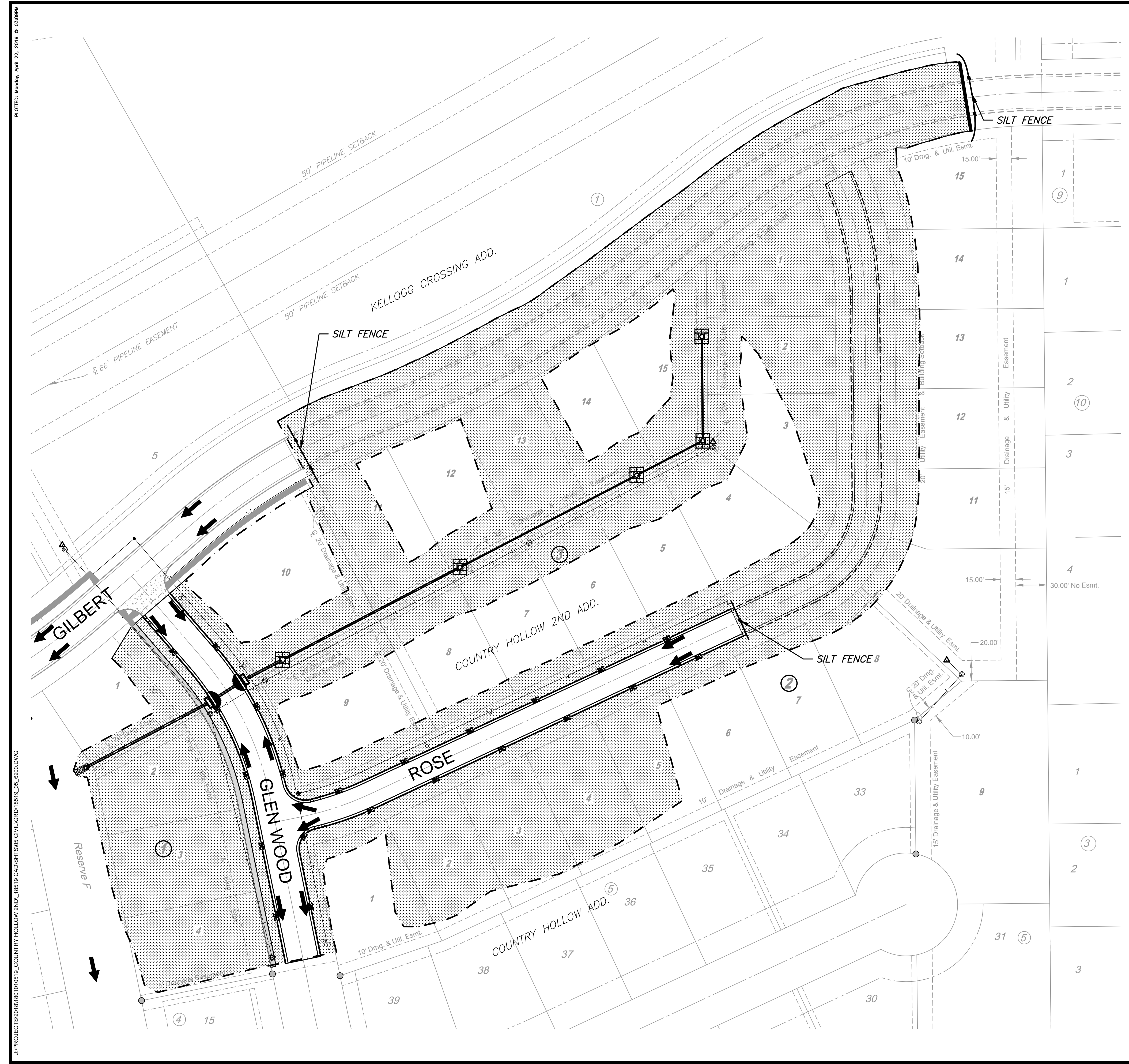
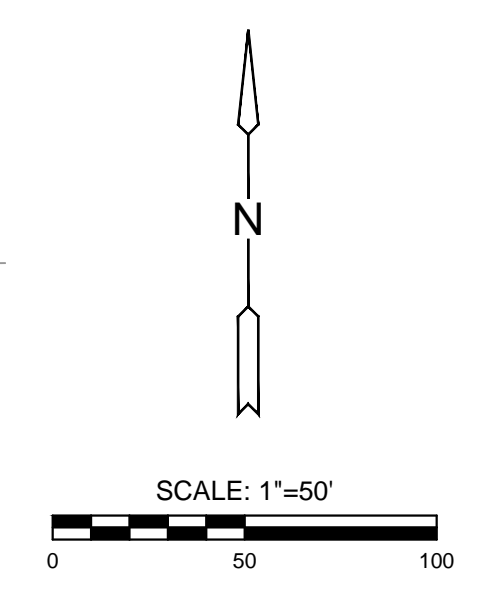
- EROSION CONTROL IS TO MEET ALL FEDERAL, STATE, COUNTY AND LOCAL CODE STANDARDS.
- TEMPORARY SEEDING: ALL AREAS DISTURBED WITH EXCEPTION OF PROPOSED STREET PAVEMENT SHALL BE SEEDED (COST SUBSIDIARY TO PROJECT) AND FERTILIZED UNLESS PERMANENT SEEDING CAN BE INSTALLED IMMEDIATELY AFTER CONSTRUCTION. SEE SUPPLEMENTAL SEEDING NOTES ON SHEET 15.
- IN THE EVENT THAT A PORTION OF THE SITE WILL REMAIN DISTURBED FOR MORE THAN 14 DAYS, PERMANENT SEEDING SHALL BE INSTALLED. PERMANENT SEEDING MIX AND RATE SHALL BE APPROVED BY THE DEVELOPER'S REPRESENTATIVE.
- ALL AREAS SHALL BE FINE GRADED AND SURFACE SHALL BE FREE FROM STICKS, SMALL STONES, AND OTHER EXTRANEIOUS MATERIALS.
- CONTRACTOR SHALL PROVIDE EROSION PROTECTION THROUGHOUT PROJECT CONSTRUCTION. THE PLAN PROVIDED HERE IS FOR FINAL PROTECTION, VARIOUS PHASES OF THIS PLAN SHALL BE IMPLEMENTED OR MODIFIED TO CONTROL EROSION. MODIFICATIONS OF THE PLAN SHALL BE APPROVED BY THE OWNER'S REPRESENTATIVE.
- SEEDING AREAS SHALL BE PREPARED FOR PLANTING WITH COMMON AGRICULTURAL TECHNIQUES. APPROVE WITH OWNER'S REPRESENTATIVE BEFORE PLANTING.
- ALL SEED SHALL BE DISTRIBUTED WITH AN ACCEPTABLE DRILL INTENDED FOR SUCH OPERATIONS, OR OTHER EQUIPMENT APPROVED BY THE OWNER'S REPRESENTATIVE. SEEDING DEPTH SHALL BE 1/4 OF AN INCH.
- ALL SEEDED AREAS SHALL BE IMMEDIATELY MULCHED WITH PRAIRIE HAY AT 2 TONS/ACRE. ANCHOR MULCH BY CRIMPING INTO TOPSOIL WITH SUITABLE MECHANICAL EQUIPMENT.
- CONTRACTOR IS RESPONSIBLE FOR MAINTAINING AND IMPLEMENTING ALL EROSION CONTROL.
- IN ORDER TO PREVENT SILT OR SEDIMENT FROM ENTERING ADJACENT PROPERTIES, APPROPRIATE BMP'S SHALL BE IMPLEMENTED WITHIN THE PROJECT.
- ANY MUD TRACKED ONTO ADJACENT PAVED AREAS OR STREETS SHALL BE REMOVED AT THE END OF EACH WORK DAY.
- PER THE REQUIREMENTS OF THE NOI/SWPPP, BMP INSPECTION REPORTS SHALL BE COMPLETED BY THE CONTRACTOR WEEKLY AND WITHIN 24 HOURS AFTER A 1/2" RAIN. REPORTS SHALL BE KEPT WITH THE SWPPP ON SITE.
- AREA QUANTITIES SHOWN ON EROSION CONTROL PLAN ARE APPROXIMATE. ANY ADDITIONAL SEEDING SHALL BE SUBSIDIARY TO SEEDING.
- CONTRACTOR SHALL PROVIDE A SIGN NEAR THE ENTRANCE WITH THE FOLLOWING INFORMATION:
  - CONTACT NAME AND INFORMATION
  - A COPY OF THE NOI
  - LOCATION OF SWPPP

### CONSTRUCTION ACCESS

A CONSTRUCTION ENTRANCE WAS INSTALLED ON GLEN WOOD DURING WATER AND SANITARY SEWER CONSTRUCTION. CONTRACTOR TO LIMIT USE ON THIS CONSTRUCTION ENTRANCE AFTER STORM WATER SEWER INSTALLATION AND USE THE GILBERT CONSTRUCTION ENTRANCE FOR THE REMAINDER OF THE PROJECT, IF POSSIBLE.

### LEGEND

- WATERLINE
- SANITARY SEWER
- STORMWATER SEWER
- UNDERGROUND ELECTRICAL
- GAS LINE
- FIBER OPTIC CABLE
- FLOW ARROW
- SEEDING (6.49 ACRES - FOR INFORMATION ONLY, CONTRACTOR TO SEED ALL DISTURBED AREAS)
- AREA INLET PROTECTION (5)
- CURB INLET PROTECTION (2)
- BACK OF CURB PROTECTION (1290 LF)
- SILT FENCE (160 LF)
- LIMITS OF GRADING
- STABILIZED CONSTRUCTION ENTRANCE (SHALL BE PLACED ON GILBERT ST.)



STORM WATER SEWER PLAN FOR  
**COUNTRY HOLLOW 2ND ADDITION**  
 PHASE 1

©2019  
 MKEC Engineering  
 All Rights Reserved  
 www.mkec.com  
 These drawings and their contents, including, but not limited to, all concepts, designs, & ideas are the exclusive property of MKEC Engineering (MKEC), and may not be used or reproduced in any way without the express consent of MKEC.

### EROSION CONTROL PLAN

PROJECT NO.	468-85268	
DATE	APR. 2019	
SCALE	1" = 50'	
DESIGNED	DRAWN	CHECKED
SLF	CRM	SLF

NO.	REVISION	DATE

SHEET NO.  
14 OF 22

PLOTTED: Monday, April 22, 2019 @ 03:09PM  
 J:\PROJECTS\2018\1801010519\_COUNTRY HOLLOW 2ND\_18519 CAD\SHITS\05 CIVIL\GRD\18519\_05\_16200.DWG