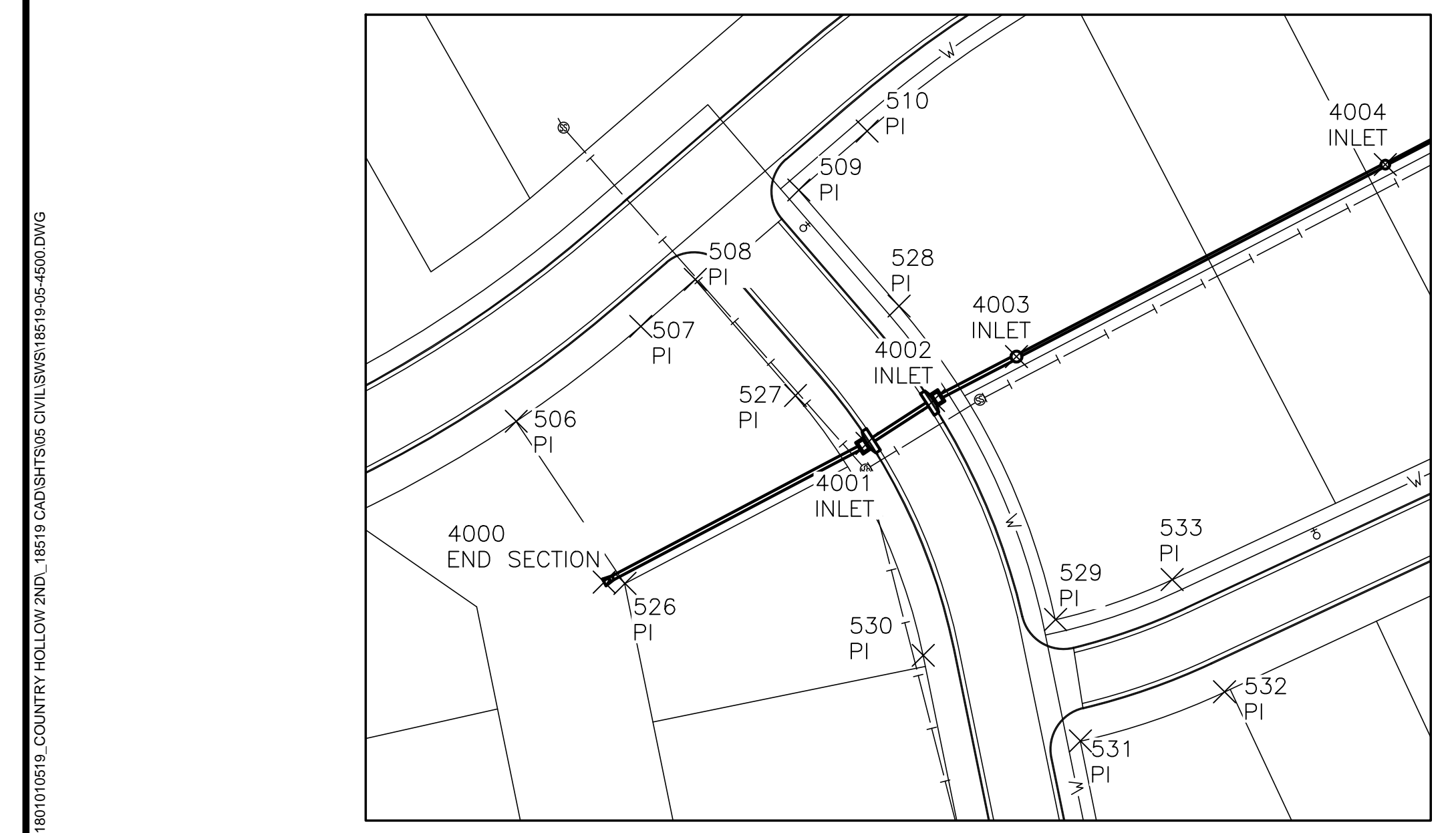
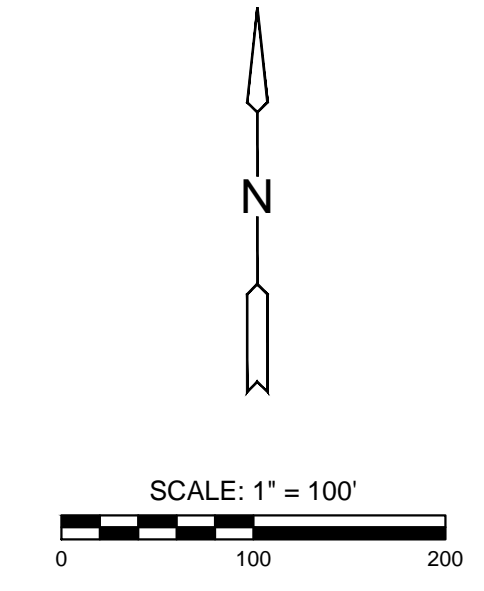
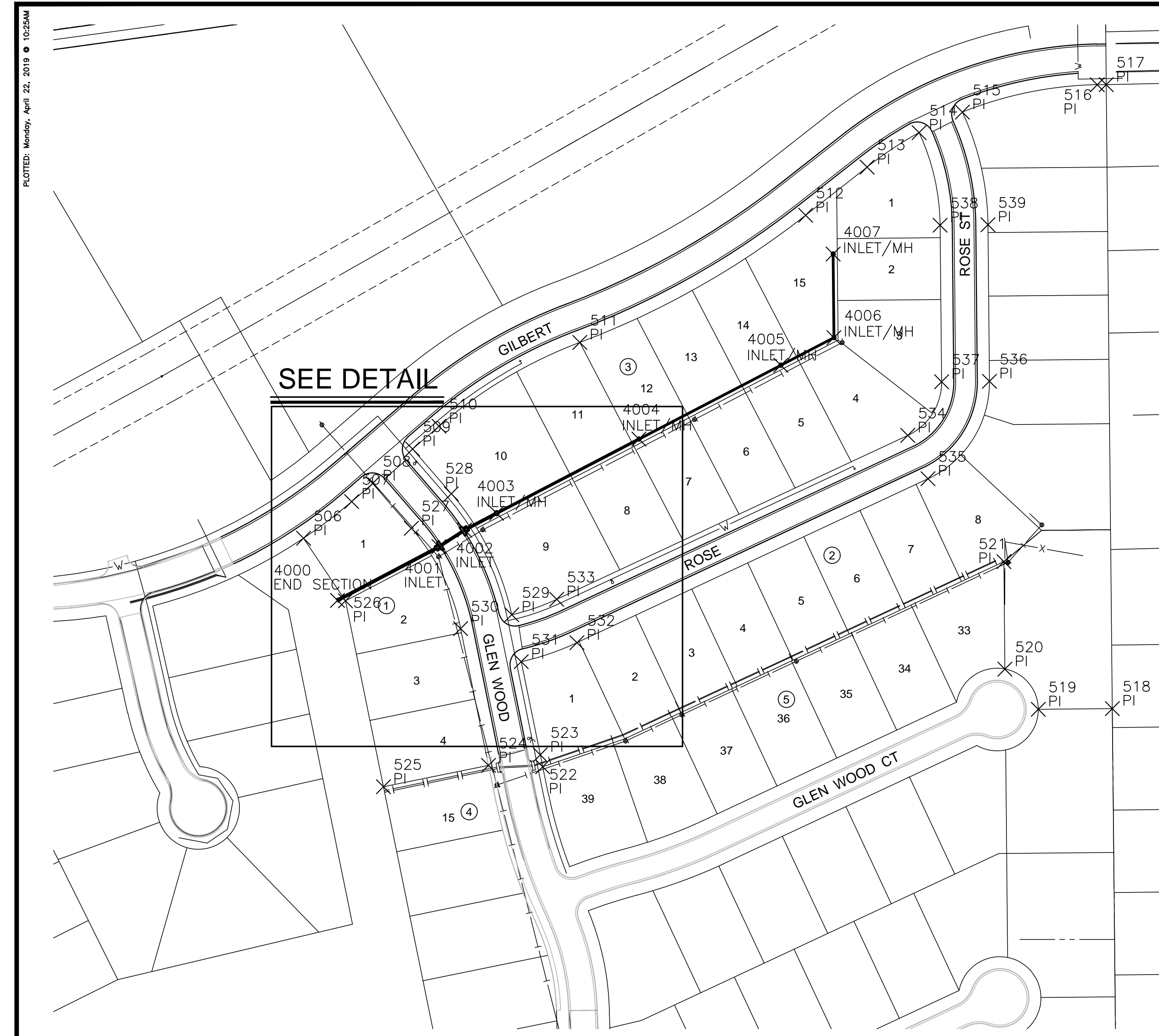


STORM SEWER PLANS FOR  
**COUNTRY HOLLOW 2ND ADDITION**  
 PHASE 1



**DETAIL**  
SCALE: 1"=60'

PLOTTED: Monday, April 22, 2019 @ 10:25AM  
 J:\PROJECTS\2018\1801010519\_COUNTRY HOLLOW 2ND\_18519\_CAD\SHOTS\05\_CIVIL\SWR\18519-05-4500.DWG

PLAT POINTS			
Point #	Northing	Easting	Desc.
506	1682478.64	1693456.22	PI
507	1682523.04	1693514.48	PI
508	1682545.02	1693539.94	PI
509	1682586.85	1693588.38	PI
510	1682614.43	1693620.33	PI
511	1682715.94	1693791.01	PI
512	1682870.14	1694064.66	PI
513	1682928.55	1694139.07	PI
514	1682970.29	1694202.16	PI
515	1682995.08	1694254.59	PI
516	1683028.30	1694418.10	PI
517	1683028.54	1694429.00	PI
518	1682272.19	1694436.34	PI
519	1682271.35	1694346.61	PI
520	1682319.97	1694306.16	PI
521	1682450.27	1694304.94	PI
522	1682201.69	1693746.03	PI

PLAT POINTS			
Point #	Northing	Easting	Desc.
523	1682216.17	1693743.08	PI
524	1682203.38	1693680.37	PI
525	1682177.40	1693552.99	PI
526	1682402.76	1693507.03	PI
527	1682490.72	1693586.82	PI
528	1682532.55	1693635.26	PI
529	1682385.90	1693708.44	PI
530	1682369.13	1693646.57	PI
531	1682329.07	1693720.05	PI
532	1682352.06	1693787.52	PI
533	1682404.61	1693762.97	PI
534	1682603.36	1694188.47	PI
535	1682550.81	1694213.01	PI
536	1682668.89	1694287.41	PI
537	1682668.35	1694229.41	PI
538	1682858.05	1694227.65	PI
539	1682858.59	1694285.64	PI

STORM WATER SEWER POINTS			
Point #	Northing	Easting	Desc.
4000	1682403.36	1693497.41	END SECTION
4001	1682468.55	1693620.28	INLET
4002	1682488.59	1693651.38	INLET
4003	1682508.96	1693690.12	INLET/MH
4004	1682598.74	1693862.67	INLET/MH
4005	1682688.30	1694034.66	INLET/MH
4006	1682721.75	1694098.87	INLET/MH
4007	1682823.10	1694097.95	INLET/MH

**CONTROL POINTS**

DATUM:  
THE HORIZONTAL DATUM IS BASED ON THE KANSAS COORDINATE SYSTEM OF 1983(2011). SOUTH ZONE. COORDINATES SHOWN HAVE BEEN MODIFIED TO THE GROUND USING A COMBINED ADJUSTMENT FACTOR OF 1.0001200144.

ALL ELEVATIONS SHOWN ARE BASED ON THE NAVD 88 VERTICAL DATUM.

**CONTROL POINTS:**

CP2,  
N:1682513.937 E:1694380.13 EL:1338.1  
5/8 BAR 2" ALUM MKEC CAP

CP3,  
N:1682359.995 E:1693840.826 EL:1335.39  
5/8 BAR 2" ALUM MKEC CAP

CP4,  
N:1683046.711 E: 1694574.106 EL:1325.059  
CHISELED 'X'

CP5,  
N:1682775.750 E:1693768.393 EL:1336.853  
5/8 BAR MKEC CLS39 CAP

CP6,  
N:1682391.904 E:1692962.388 EL:1338.797  
CHISELED 'X'

CP147,  
N:1681902.856 E:1693826.772 EL:1330.88  
5/8 BAR 2" ALUM MKEC CAP

NOTE:  
ALL CONTROL POINTS SHOWN HAVE ELEVATIONS ESTABLISHED BY DIFFERENTIAL LEVELING AND CAN BE USED AS TEMPORARY BENCHMARKS. WHEN USING A CONTROL POINT AS A TEMPORARY BENCHMARK, IT IS RECOMMENDED THAT CROSS-CHECKS BE MADE TO OTHER CONTROL POINTS OR BENCHMARKS TO CONFIRM ELEVATIONS PRIOR TO USE.

EVERY ATTEMPT HAS BEEN MADE TO INSURE ALL COORDINATE VALUES SHOWN ARE AN ACCURATE AND TRUE REPRESENTATION OF THE CURRENT PLANS. ALL VALUES ARE TO BE CONFIRMED WITH THE FINAL SIGNED PLAN SET BEFORE USE.

©2019 MKEC Engineering All Rights Reserved www.mkec.com  
These drawings and their contents, including, but not limited to, all concepts, designs, & ideas are the exclusive property of MKEC Engineering (MKEC), and may not be used or reproduced in any way without the express consent of MKEC.

**BUBBLE MAP**

PROJECT NO.	468-85268	
DATE	APR. 2019	
SCALE	1" = 100'	
DESIGNED	DRAWN	CHECKED
SLF	RWB	MAB

NO.	REVISION	DATE

SHEET NO.