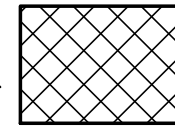
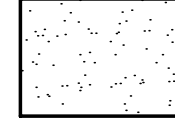
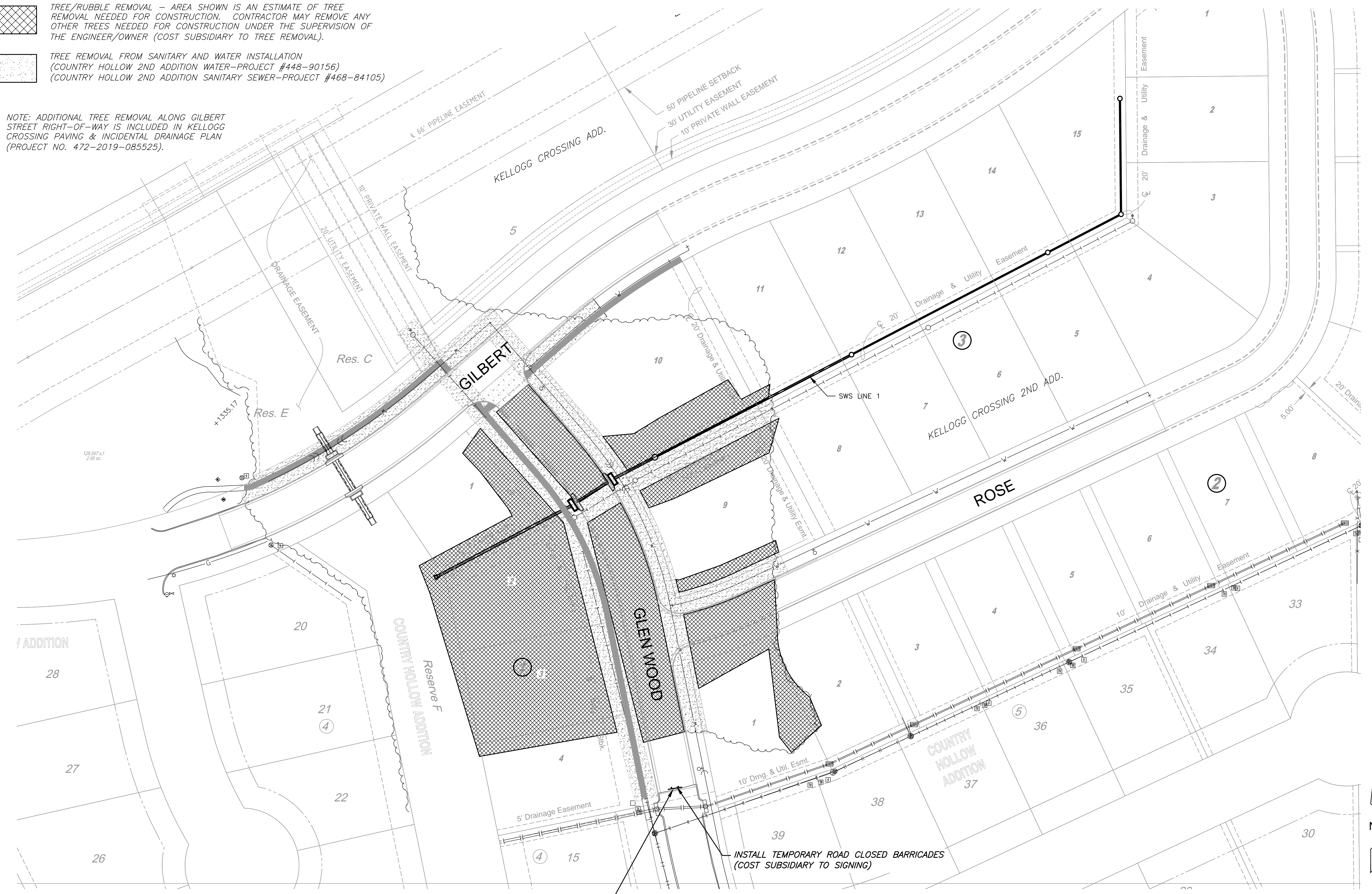


PLOTTED: Monday, April 22, 2019 @ 10:15 AM
 J:\PROJECTS\2018\1801010519_COUNTRY HOLLOW 2ND ADDITION\18519 CAD\SHOTS\05 CIVIL\GRD\18519-05-0203.DWG

-  TREE/RUBBLE REMOVAL - AREA SHOWN IS AN ESTIMATE OF TREE REMOVAL NEEDED FOR CONSTRUCTION. CONTRACTOR MAY REMOVE ANY OTHER TREES NEEDED FOR CONSTRUCTION UNDER THE SUPERVISION OF THE ENGINEER/OWNER (COST SUBSIDIARY TO TREE REMOVAL).
-  TREE REMOVAL FROM SANITARY AND WATER INSTALLATION (COUNTRY HOLLOW 2ND ADDITION WATER-PROJECT #448-90156) (COUNTRY HOLLOW 2ND ADDITION SANITARY SEWER-PROJECT #468-84105)

NOTE: ADDITIONAL TREE REMOVAL ALONG GILBERT STREET RIGHT-OF-WAY IS INCLUDED IN KELLOGG CROSSING PAVING & INCIDENTAL DRAINAGE PLAN (PROJECT NO. 472-2019-085525).



CONTRACTOR TO HAUL AWAY ALL RUBBLE PILED ONSITE (COST SUBSIDIARY TO CLEARING AND GRUBBING)

INSTALL TEMPORARY ROAD CLOSED BARRICADES (COST SUBSIDIARY TO SIGNING)



STORM WATER SEWER PLAN FOR
COUNTRY HOLLOW 2ND ADDITION
 PHASE 1

©2019 MKEC Engineering All Rights Reserved www.mkec.com
 These drawings and their contents, including, but not limited to, all concepts, designs, & ideas are the exclusive property of MKEC Engineering (MKEC), and may not be used or reproduced in any way without the express consent of MKEC.

DEMO PLAN

PROJECT NO.	468-85268	
DATE	APR. 2019	
SCALE	1"=40'	
DESIGNED	DRAWN	CHECKED
SLF	CRM	MAB

NO.	REVISION	DATE