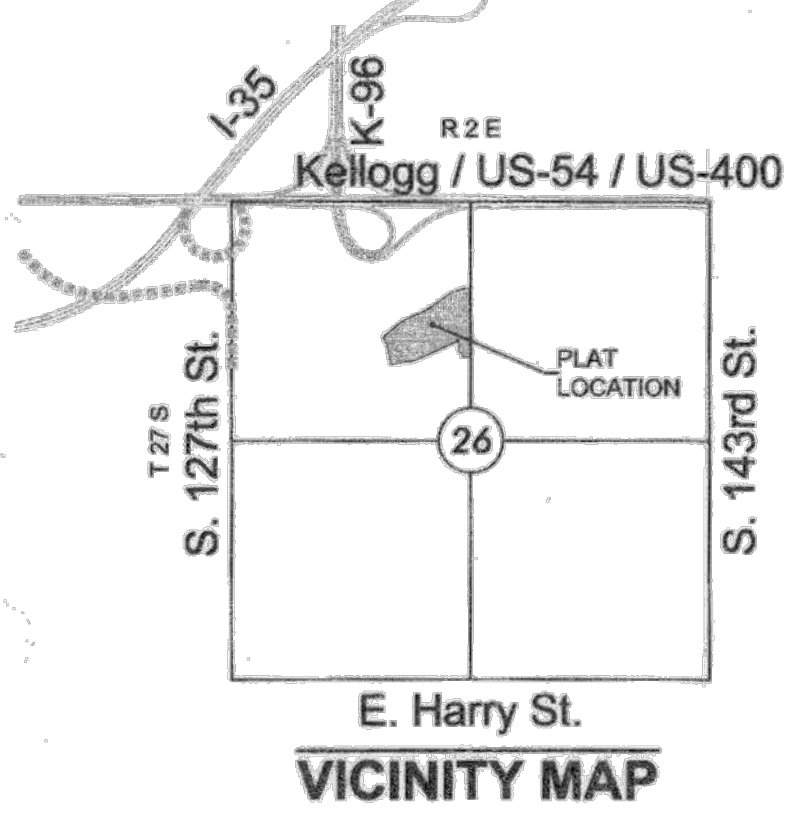


FINAL PLAT

COUNTRY HOLLOW SECOND ADDITION

AN ADDITION TO WICHITA, SEDGWICK COUNTY, KANSAS

a replat of a portion of Country Hollow Addition, an addition to Wichita, Sedgwick County, Kansas



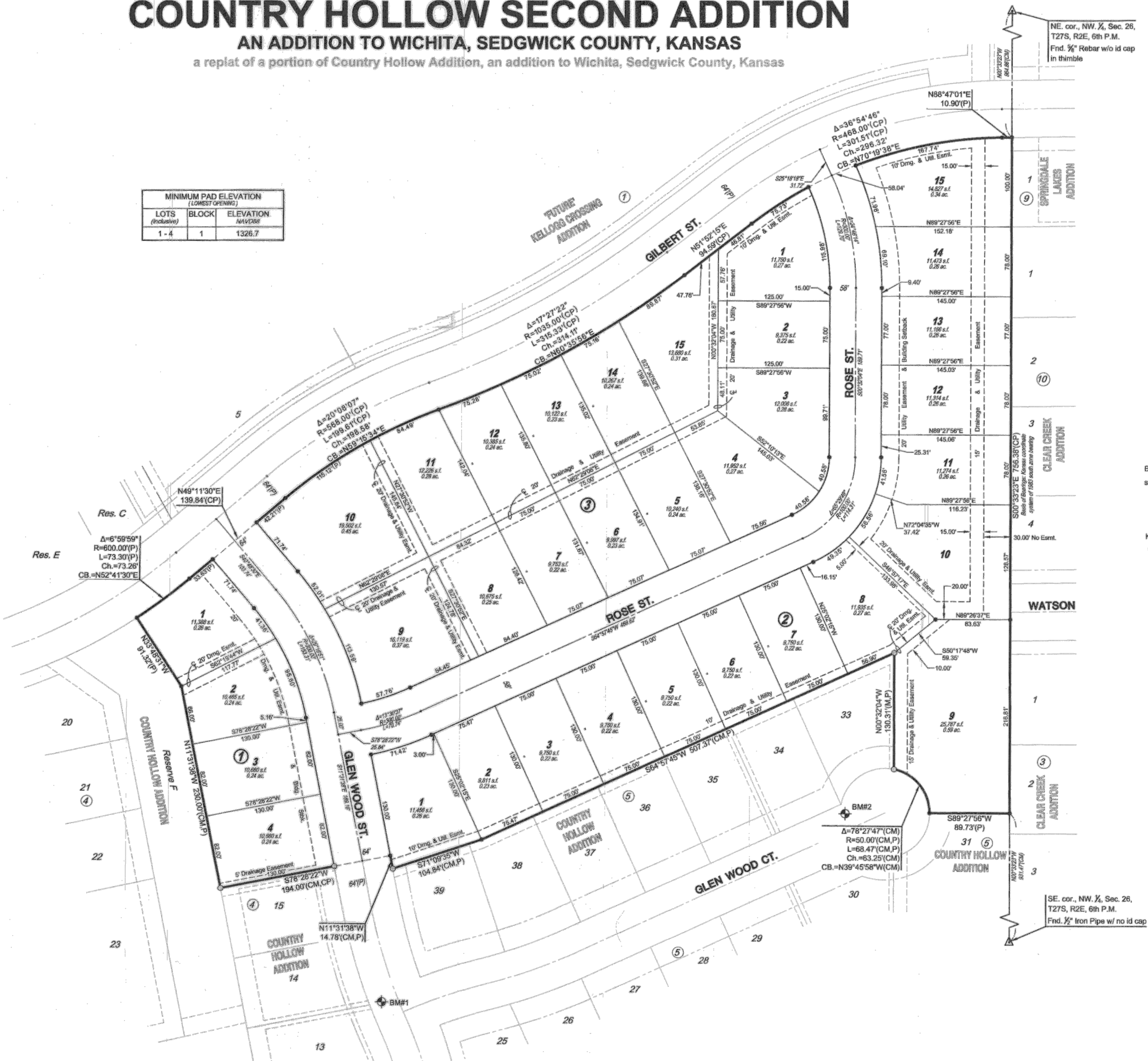
MINIMUM PAD ELEVATION (LOWEST OPENING)		
LOTS (inclusive)	BLOCK	ELEVATION NAVD88
1 - 4	1	1326.7

LEGEND

- Date of Survey: July 2018
- △ = Section Corner Monument Found
 - = Found 5/8" rebar w/ MKEC CLS 39 id. cap
 - = Set 5/8" rebar w/ MKEC CLS 39 id. cap
 - ⊕ = Benchmark
 - (P) = Platted
 - (CM) = Calculated from Measurement
 - Drng. = Drainage
 - Util. = Utility
 - Esmt. = Easement
 - ① = Lot
 - ④ = Block

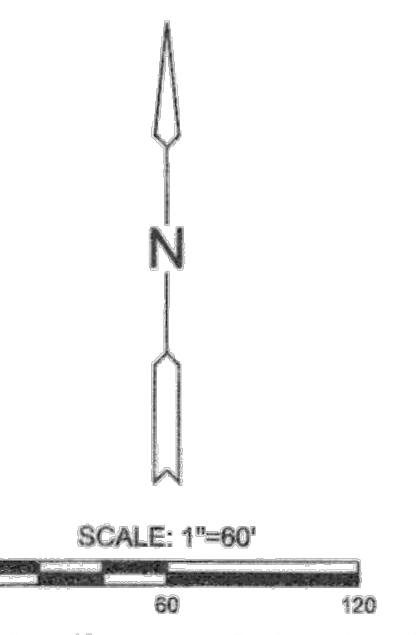
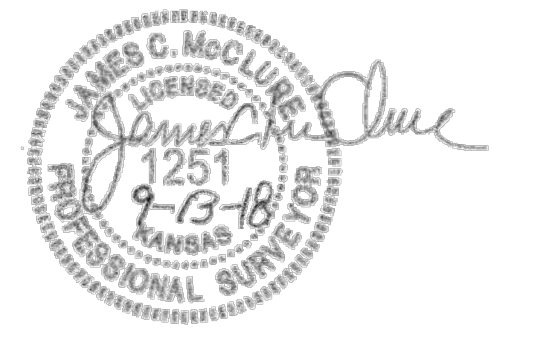
BENCHMARKS

- BM#1 Chiseled square on top of curb between Lots 13 and 14, Block 4, Country Hollow Addition. Elev.=1333.3 NAVD88
- BM#2 Chiseled square on top of curb between Lots 33 and 34, Block 5, Country Hollow Addition. Elev.=1341.01 NAVD88



NE. cor., NW 1/4, Sec. 26, T27S, R2E, 6th P.M.
Fnd. 5/8" Rebar w/ no id cap in thimble

SE. cor., NW 1/4, Sec. 26, T27S, R2E, 6th P.M.
Fnd. 1/2" Iron Pipe w/ no id cap



Basis of Bearings: Kansas coordinate system of 1983 south zone bearing of S00°33'23"E on the east line of the Northwest Quarter, Section 26, Township 27 South, Range 2 East of the 6th Principal Meridian. This plat is surveyed and platted on NAD83 using Kansas state plane south zone coordinates, modified to the surface, having a combined adjustment scale factor of 1.000120014401728

