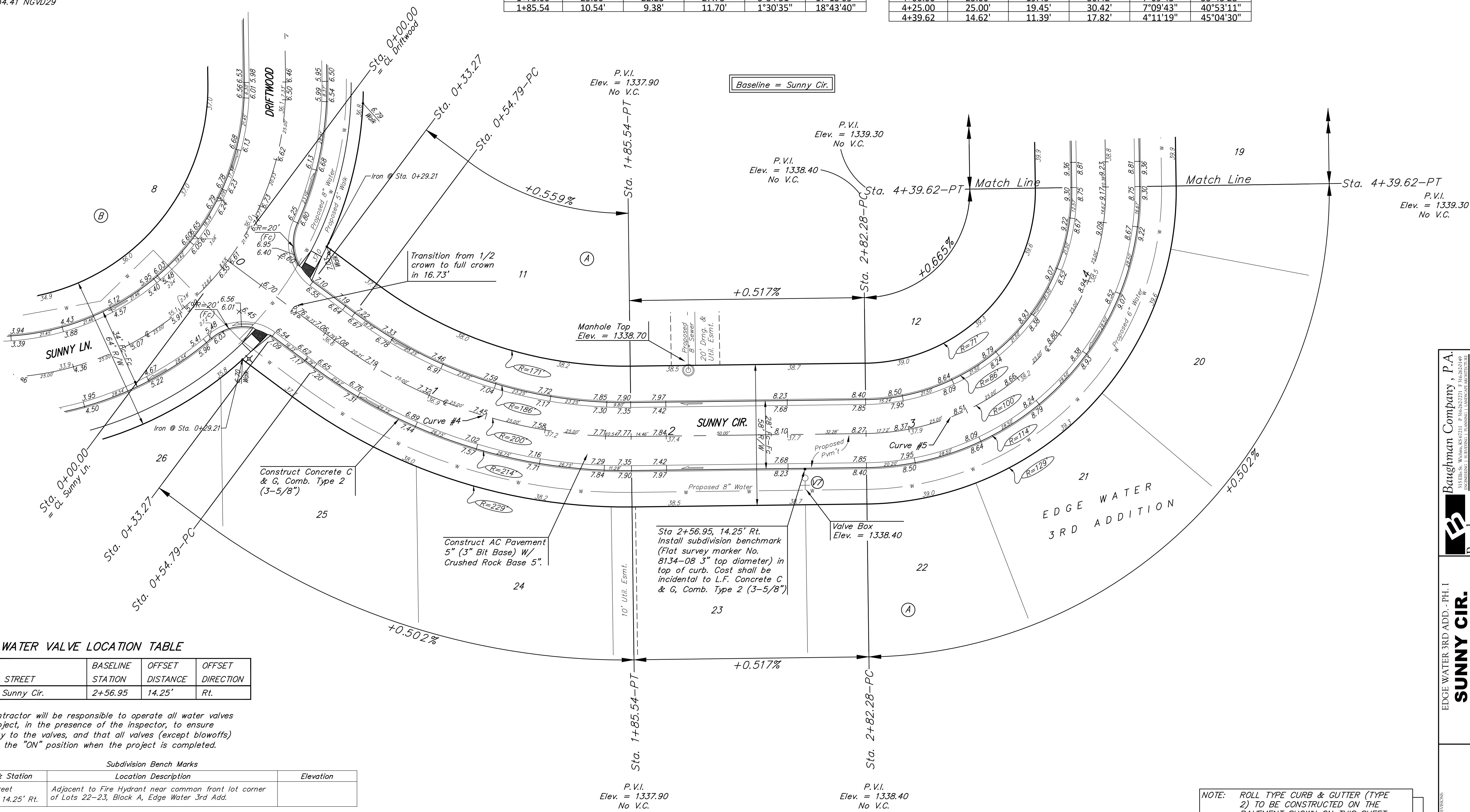
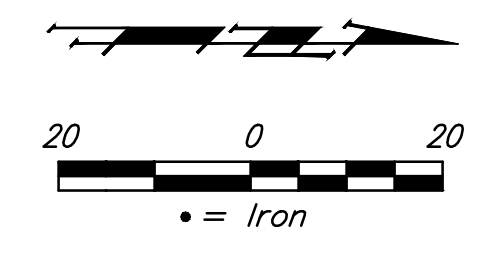


BENCHMARK:
 BM #1: Brass disc at west end of west return at intersection of Driftwood & Driftwood Ct. (Lots 52-62, Block D), Edge Water Addition.
 Elev. = 1336.19 NGVD29

BM #2: (Temporary Benchmark)
 Baughman rebar found at NW corner of Lot 1, Block E, Edge Water Addition.
 Elev. = 1334.41 NGVD29

Curve #4					
Curve Data Based on Centerline					
Rad. = 200' Delta = 37°27'19" Tangent = 67.80'					
Arc = 130.75' L.C. = 128.43' Def./Ft. = 8.59395 Min.					
Station	Arc	8' Left	8' Right	Defl.	Total Defl.
0+54.79	-	-	-	0°00'00"	0°00'00"
0+75.00	20.21'	17.98'	22.42'	2°53'41"	2°53'41"
1+00.00	25.00'	22.23'	27.73'	3°34'51"	6°28'32"
1+25.00	25.00'	22.23'	27.73'	3°34'51"	10°03'23"
1+50.00	25.00'	22.23'	27.73'	3°34'51"	13°38'14"
1+75.00	25.00'	22.23'	27.73'	3°34'51"	17°13'05"
1+85.54	10.54'	9.38'	11.70'	1°30'35"	18°43'40"

Curve #5					
Curve Data Based on Centerline					
Rad. = 100' Delta = 90°08'59" Tangent = 100.26'					
Arc = 157.34' L.C. = 141.61' Def./Ft. = 17.18884 Min.					
Station	Arc	8' Left	8' Right	Defl.	Total Defl.
2+82.28	-	-	-	0°00'00"	0°00'00"
3+00.00	17.72'	13.80'	21.59'	5°04'35"	5°04'35"
3+25.00	25.00'	19.45'	30.42'	7°09'43"	12°14'18"
3+50.00	25.00'	19.45'	30.42'	7°09'43"	19°24'02"
3+75.00	25.00'	19.45'	30.42'	7°09'43"	26°33'45"
4+00.00	25.00'	19.45'	30.42'	7°09'43"	33°43'28"
4+25.00	25.00'	19.45'	30.42'	7°09'43"	40°53'11"
4+39.62	14.62'	11.39'	17.82'	4°11'19"	45°04'30"



WATER VALVE LOCATION TABLE

VALVE NUMBER	STREET	BASELINE STATION	OFFSET DISTANCE	OFFSET DIRECTION
V7	Sunny Cir.	2+56.95	14.25'	Rt.

Paving contractor will be responsible to operate all water valves on the project, in the presence of the inspector, to ensure accessibility to the valves, and that all valves (except blowoffs) are left in the "ON" position when the project is completed.

Subdivision Bench Marks

Street & Station	Location Description	Elevation
Street 2+56.95, 14.25' Rt.	Adjacent to Fire Hydrant near common front lot corner of Lots 22-23, Block A, Edge Water 3rd Add.	

BAYBURN SHEET 10 OF 26
 EDGE WATER 3RD ADD. - PH. I
SUNNY CIR.
 STREET IMPROVEMENTS
 Baughman Company, P.A.
 ENGINEERING, PLANNING, LANDSCAPE ARCHITECTURE
 1150 W. 42ND ST., PHILADELPHIA, PA 19142
 PH: 215-382-1000 FAX: 215-382-1001
 www.baughman.com
 Date: 05/19