

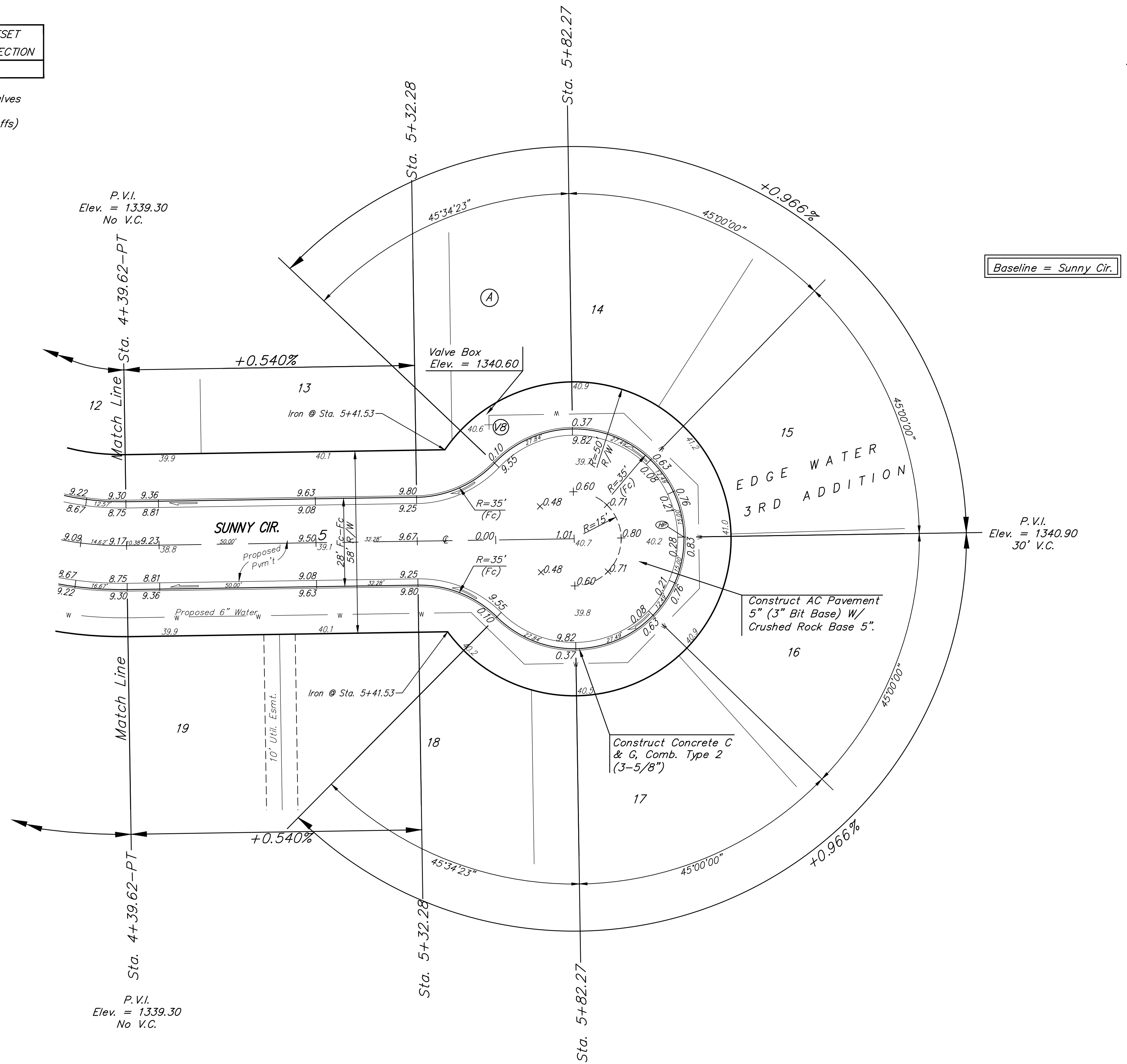
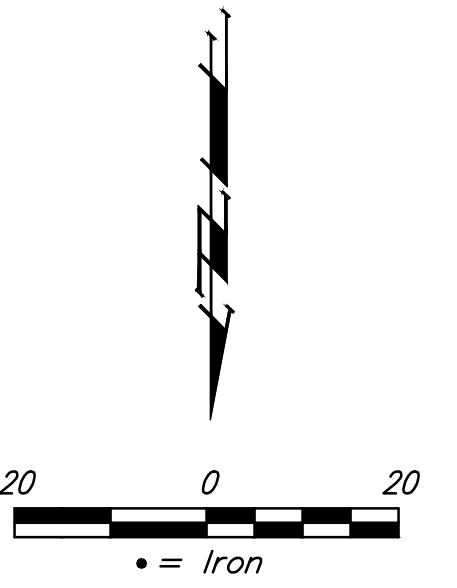
BENCHMARK:
 BM #1: Brass disc at west end of west return at intersection of Driftwood & Driftwood Ct. (Lots 52-62, Block D), Edge Water Addition.
 Elev. = 1336.19 NGVD29

BM #2: (Temporary Benchmark) Baughman rebar found at NW corner of Lot 1, Block E, Edge Water Addition.
 Elev. = 1334.41 NGVD29

WATER VALVE LOCATION TABLE

VALVE NUMBER	STREET	BASELINE STATION	OFFSET DISTANCE	OFFSET DIRECTION
V8	Sunny Cir.	5+55.72	39.73'	Lt.

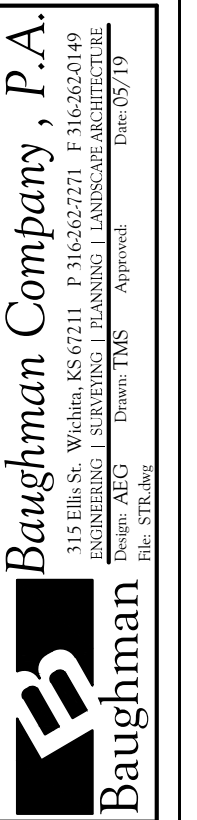
Paving contractor will be responsible to operate all water valves on the project, in the presence of the inspector, to ensure accessibility to the valves, and that all valves (except blowoffs) are left in the "ON" position when the project is completed.



Baseline = Sunny Cir.

P.V.I. Elev. = 1340.90
30' V.C.

NOTE: ROLL TYPE CURB & GUTTER (TYPE 2) TO BE CONSTRUCTED ON THE PAVEMENT SHOWN ON THIS SHEET. TOP OF CURB ELEVATIONS ARE GIVEN FOR FULL HEIGHT CURB (TYPE 4).



EDGE WATER 3RD ADD. - PH. 1
SUNNY CIR.
 STREET IMPROVEMENTS