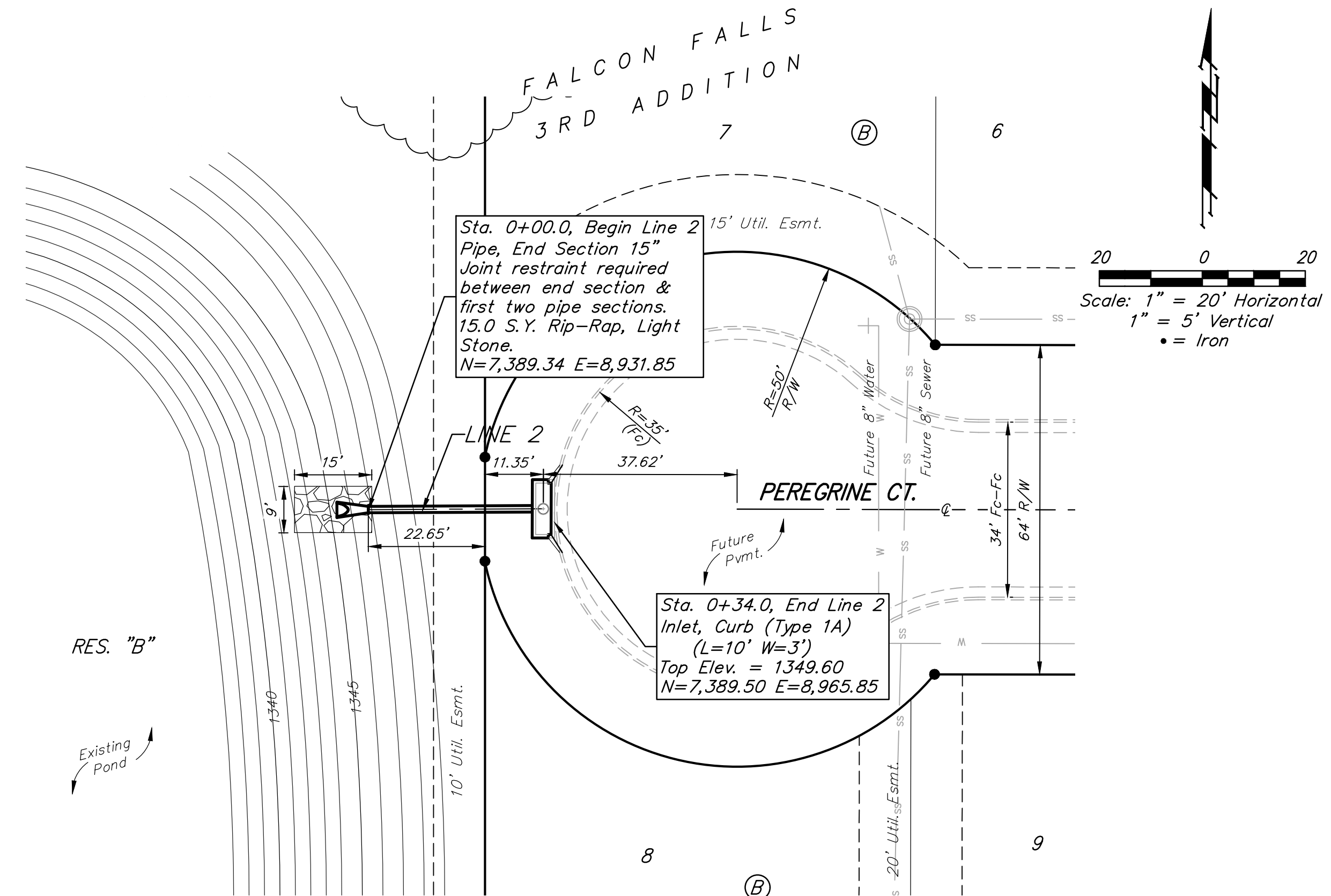
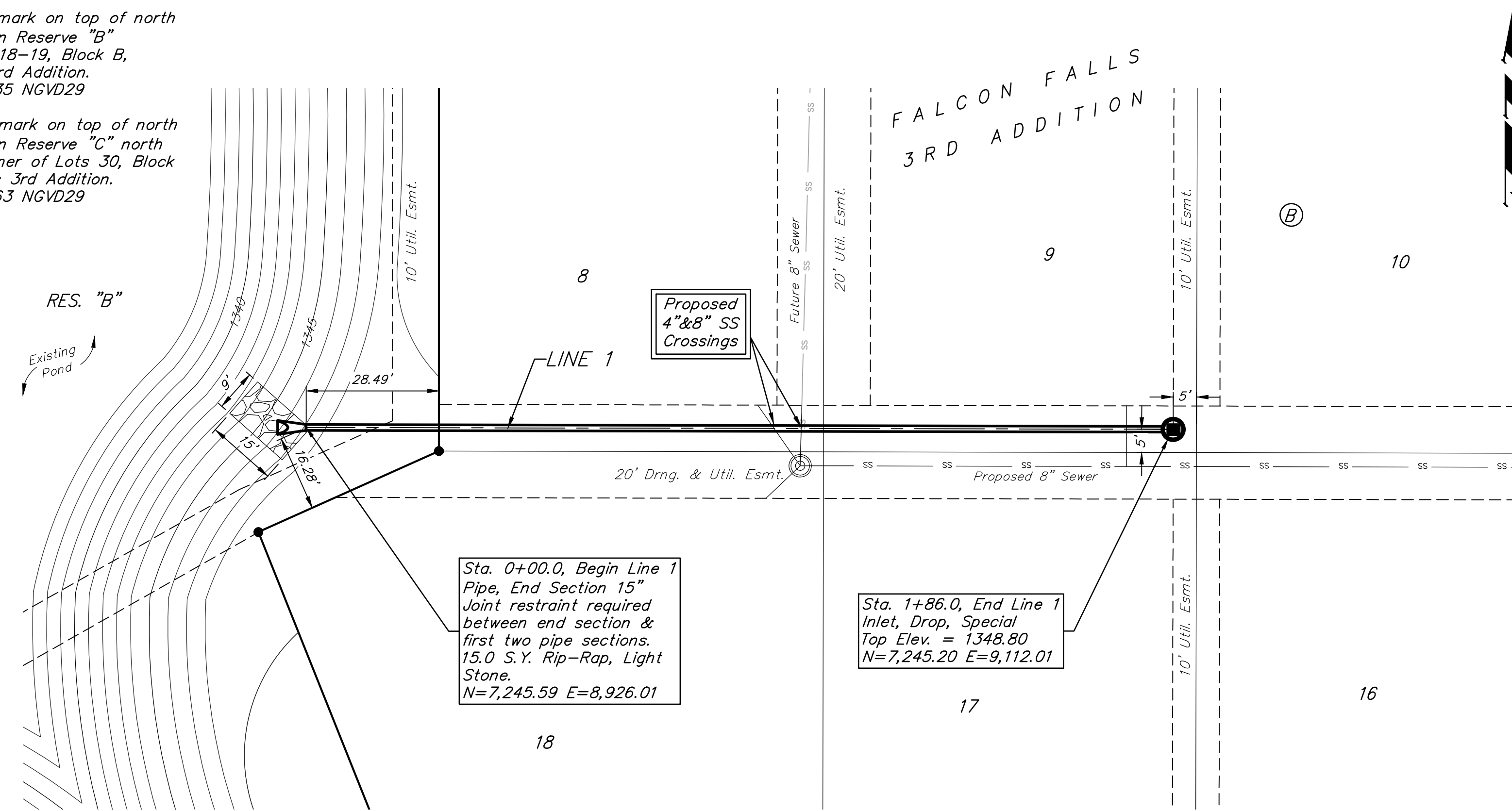


**BENCHMARKS:**  
 BM #1: Benchmark on top of north 48" headwall in Reserve "B" between Lots 18-19, Block B, Falcon Falls 3rd Addition. Elev. = 1349.35 NGVD29

BM #2: Benchmark on top of north 48" headwall in Reserve "C" north of the NE corner of Lots 30, Block C, Falcon Falls 3rd Addition. Elev. = 1343.63 NGVD29



Contractor to adjust proposed end section locations to match existing pond slopes.

